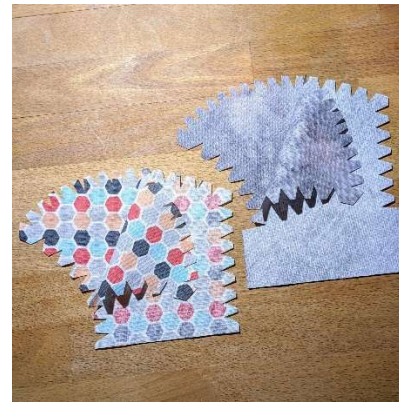


How to sew a fitted mask with filter pocket – no measuring or pinning required!

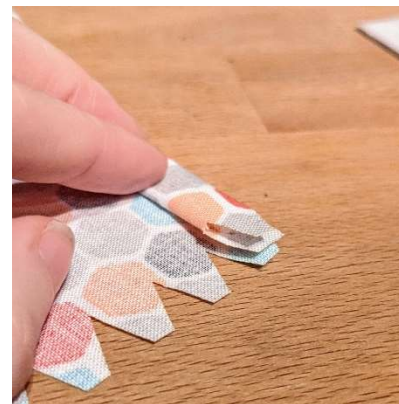
On April 3, 2020, the CDC provided recommendations for wearing a homemade mask to prevent the spread of COVID-19 at <https://www.cdc.gov/coronavirus/2019-ncov/prevent-getting-sick/cloth-face-cover.html>. The instructions below should allow anyone with basic sewing skills to create a tailored mask with a pocket for a disposable filter. The design is based on <https://www.craftpassion.com/face-mask-sewing-pattern/> but reduces the need for pinning or measuring once the fabric is cut.

Once you've made masks for yourself and your family/friends, consider contributing to the Station North Tool Library's efforts at <https://www.stationnorthtoolibrary.org/masks>.

1. Select two different patterns of 100% cotton. This is important so that the wearer can easily tell the lining from the exterior. Avoid using solid colors so that it's obvious this isn't a medical-grade mask.
2. Print pattern for the desired size (available at end of instructions) and cut out two of each piece, with one of each being a mirror-image.

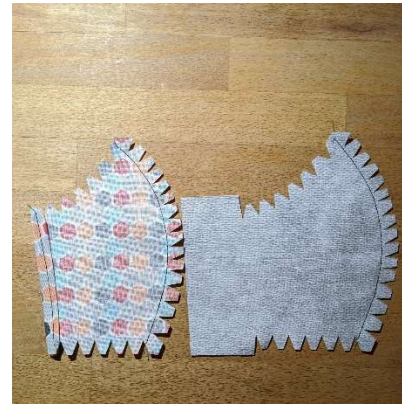


3. On each of the smaller pieces, fold the straight edge twice so that three notches overlap.
4. Sew in place.

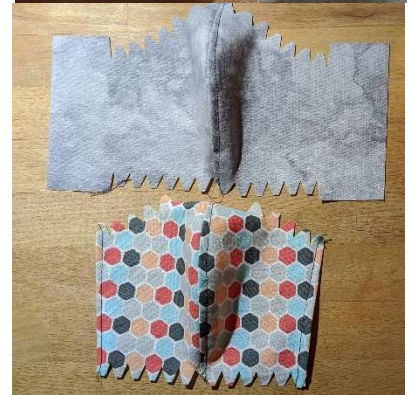


For more information on this pattern, visit <https://chasestreetae.com/blogs/news/slow-the-spread-with-cloth-face-masks>

5. Ensure the right-sides are placed facing each other, so you can only see the back of the fabric on either side of each pair.
6. Sew each pair together along the long curved edge, right under the notches.



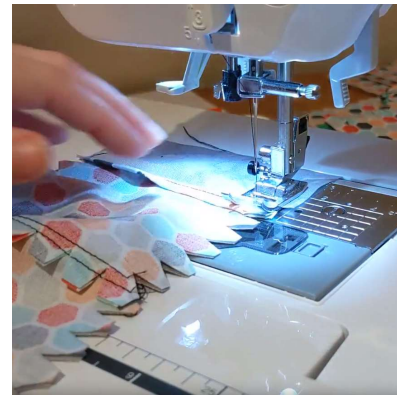
7. Open each pair (they'll kind of look like wings).
8. Push the notches to the side.
9. Sew in place. At this point each pair will hold a curved shape due to the reinforced stitching.



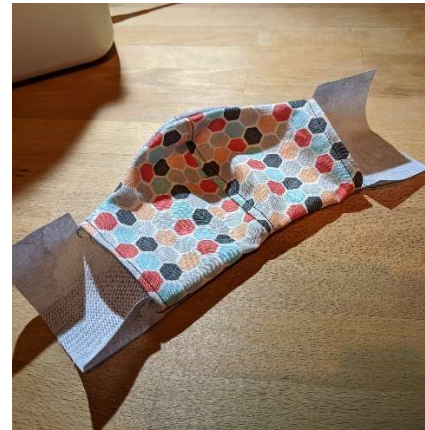
For more information on this pattern, visit <https://chasestreetae.com/blogs/news/slow-the-spread-with-cloth-face-masks>

10. Lay the lining over the larger outer layer, right sides together, matching up the notches.

11. Sew along the edge of the notches on both sides.



12. Flip inside-out.



13. Select one of the bottom tabs and fold it 3 times so that it lines up with the bottom of the mask.

14. Sew in place, then continue sewing along the bottom of the mask.

15. When you reach the bottom of the other tab, fold it and continue sewing the rest of the length. There will be one continuous seam along the entire bottom of the mask.

16. Repeat on the top of the mask.



17. On each of the side flaps, fold approximately $\frac{1}{4}$ ".

18. Fold again so that it lines up next to the mask lining, but doesn't overlap.



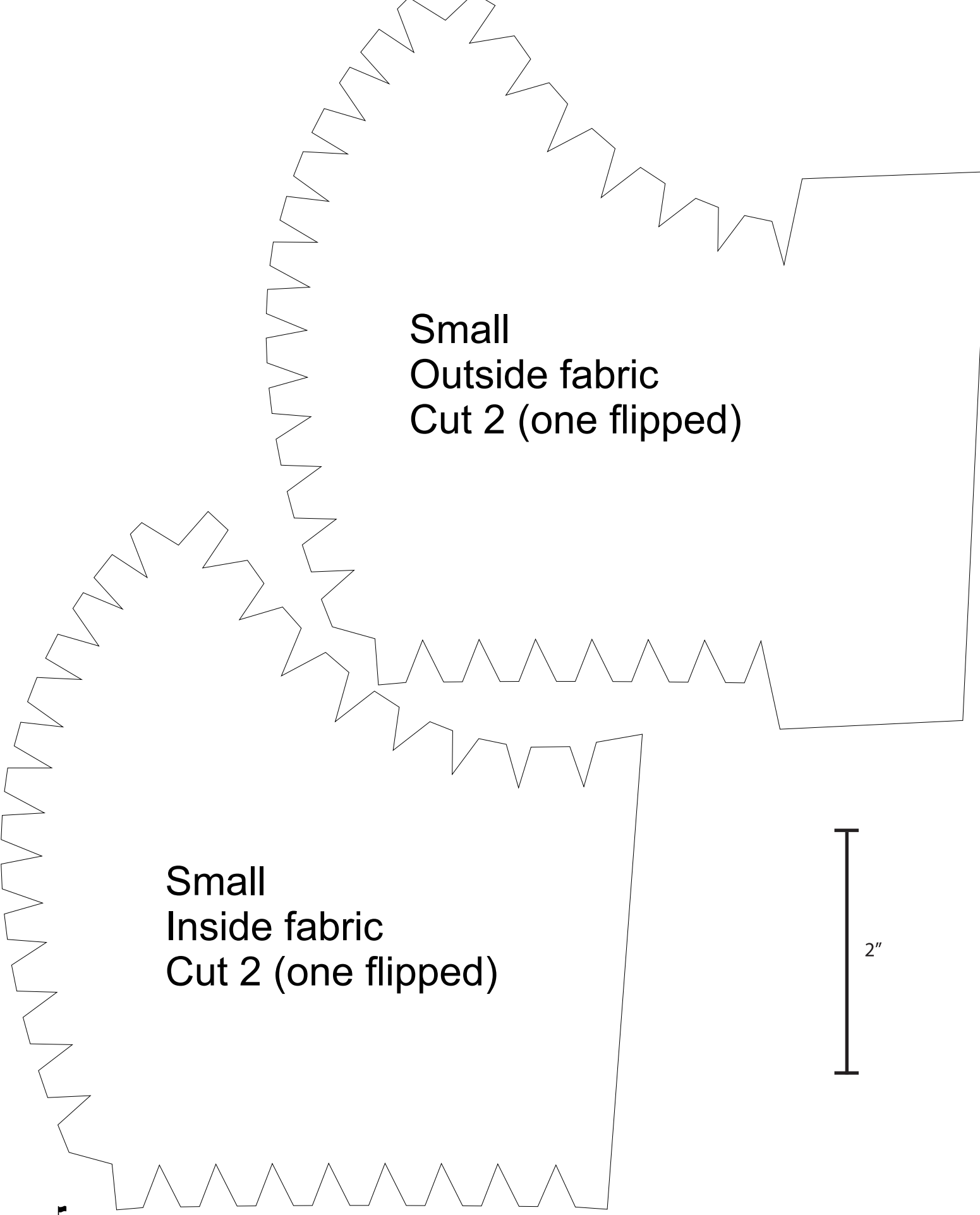
19. Sew along the edge so that you have a "tube" on each side of the mask where you can add elastic/ribbon/ties.



20. You now have a complete mask! Add disposable non-woven material into the pocket to act as an additional filter if desired (such as coffee filters).

21. Follow instructions for safely wearing a homemade mask at <https://www.cdc.gov/coronavirus/2019-ncov/prevent-getting-sick/diy-cloth-face-coverings.html>





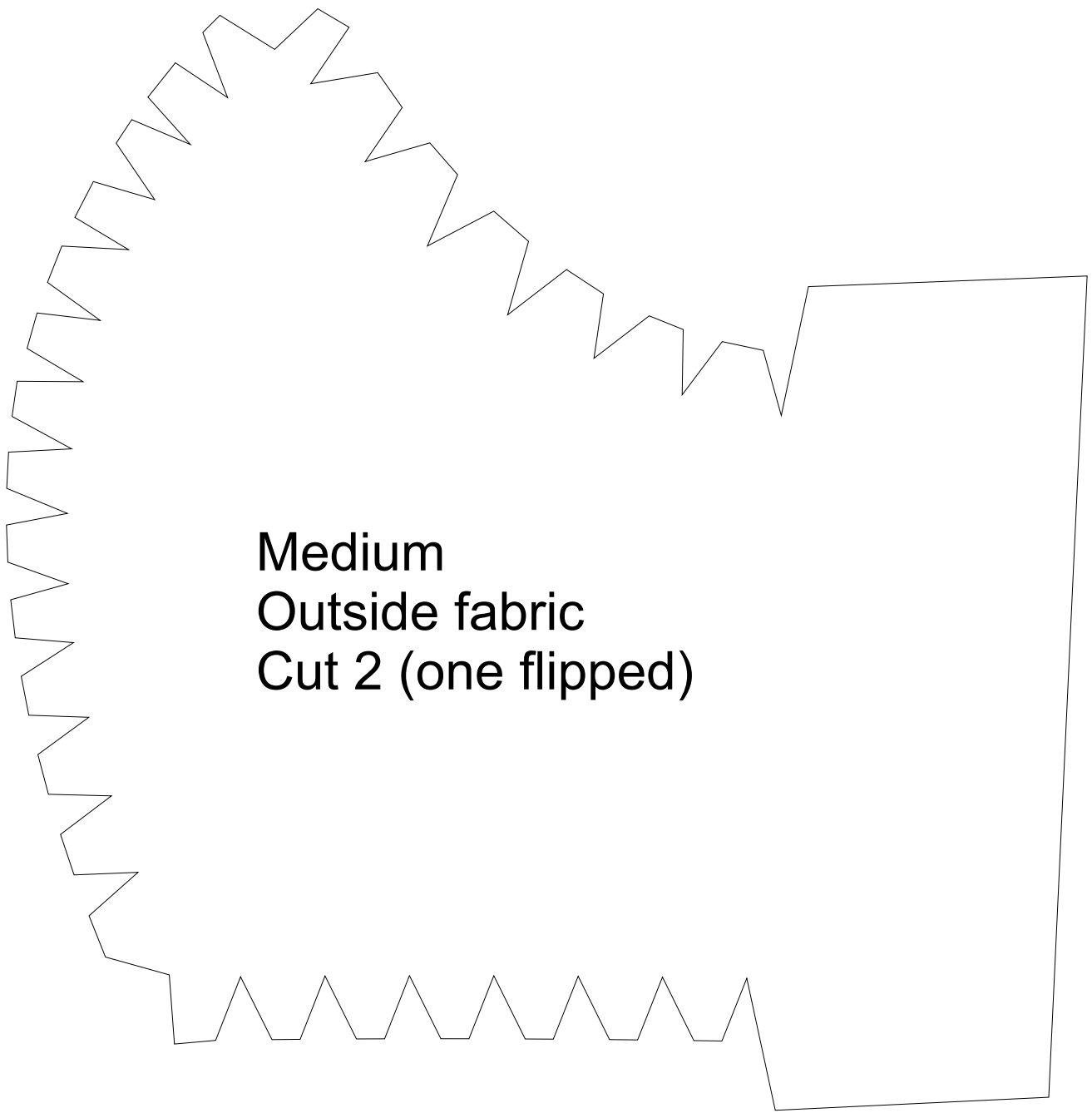
**Small
Outside fabric
Cut 2 (one flipped)**

**Small
Inside fabric
Cut 2 (one flipped)**

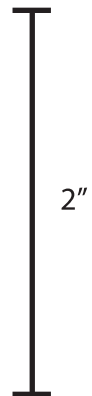
2"



For more information on this pattern, visit <https://chasestreetae.com/blogs/news/slow-the-spread-with-cloth-face-masks>



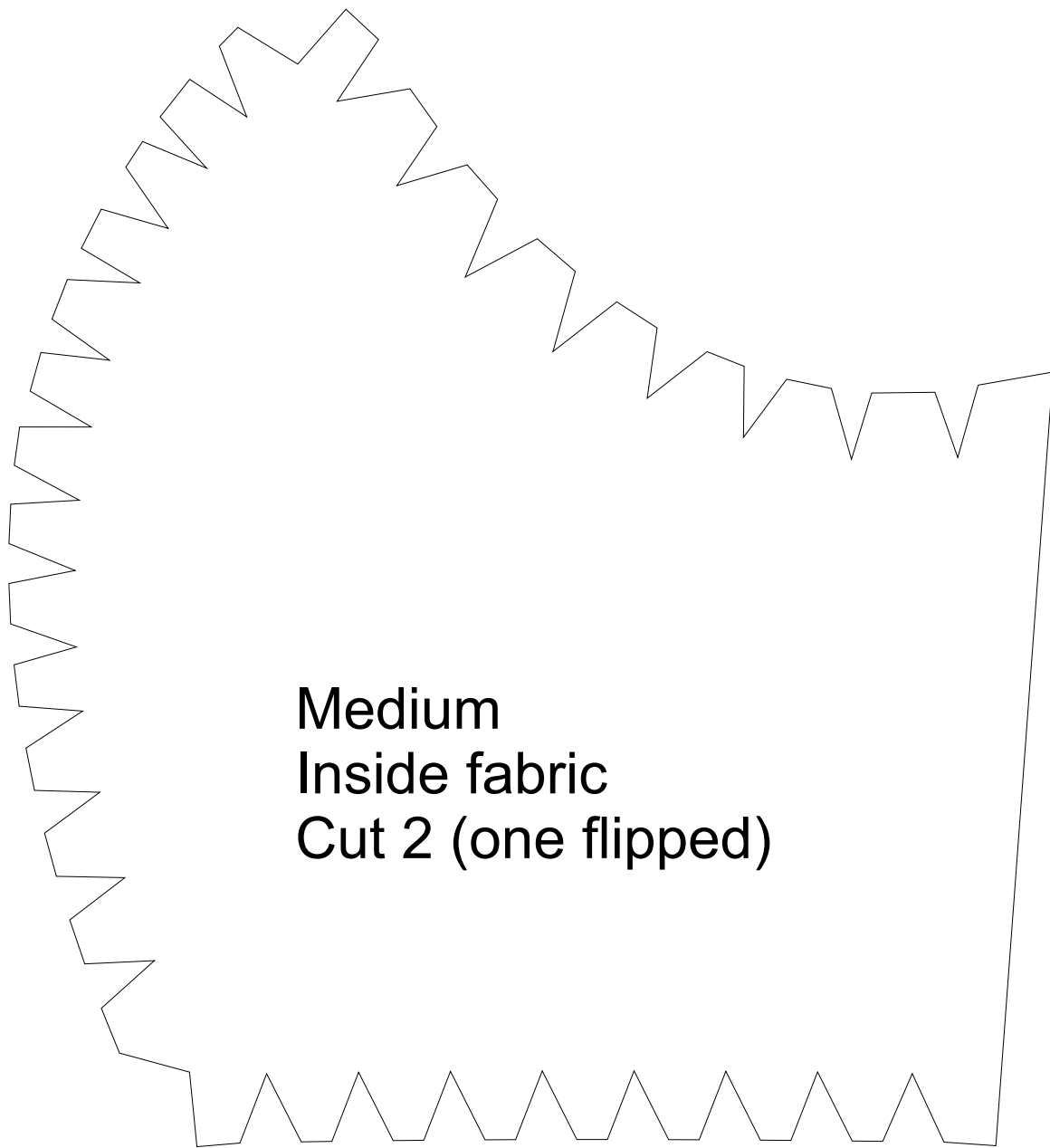
Medium
Outside fabric
Cut 2 (one flipped)



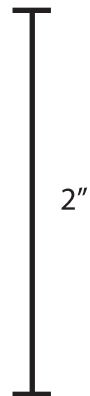
2"



For more information on this pattern, visit <https://chasestreetae.com/blogs/news/slow-the-spread-with-cloth-face-masks>



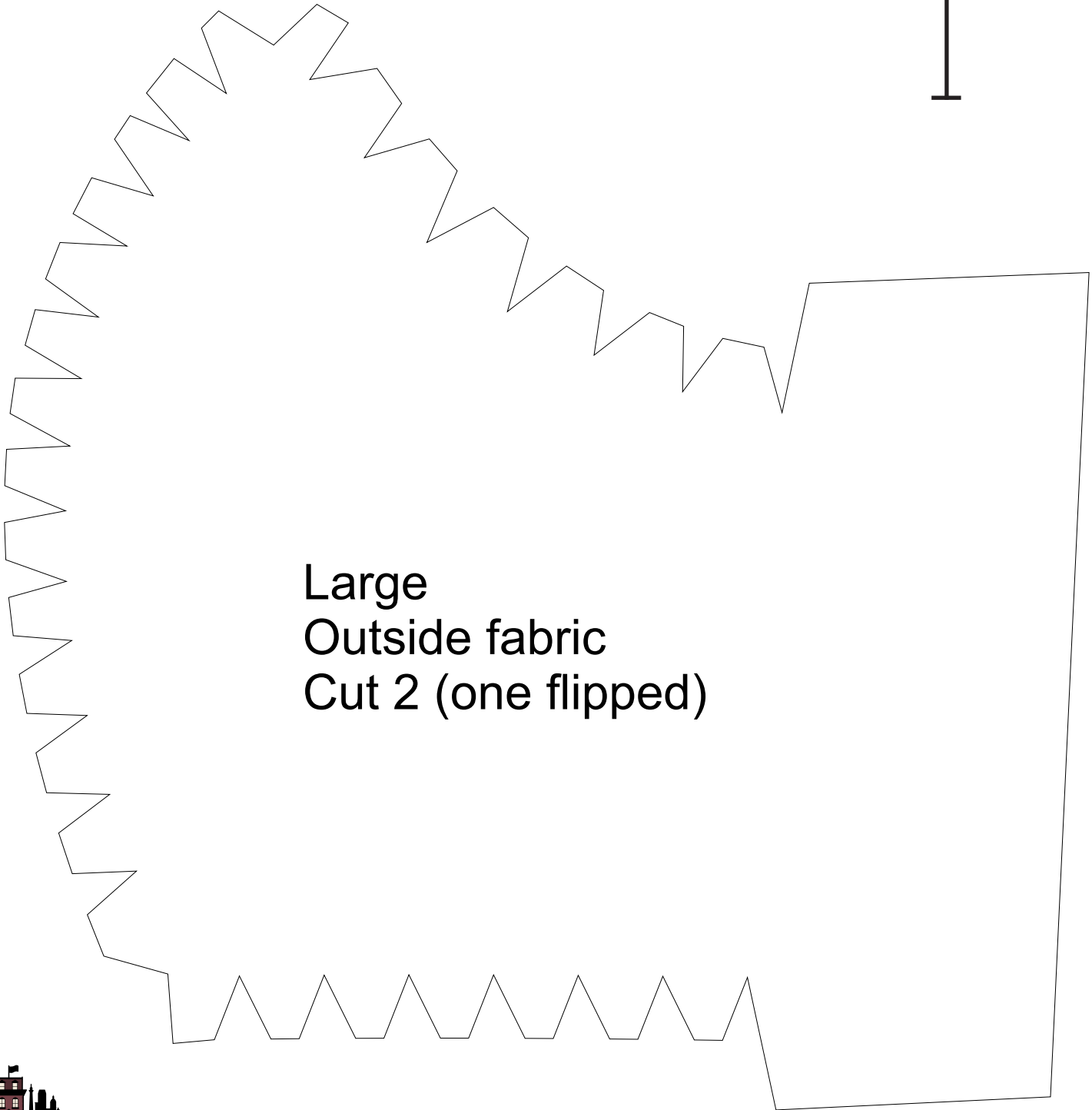
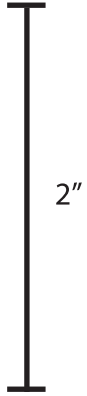
**Medium
Inside fabric
Cut 2 (one flipped)**



2"



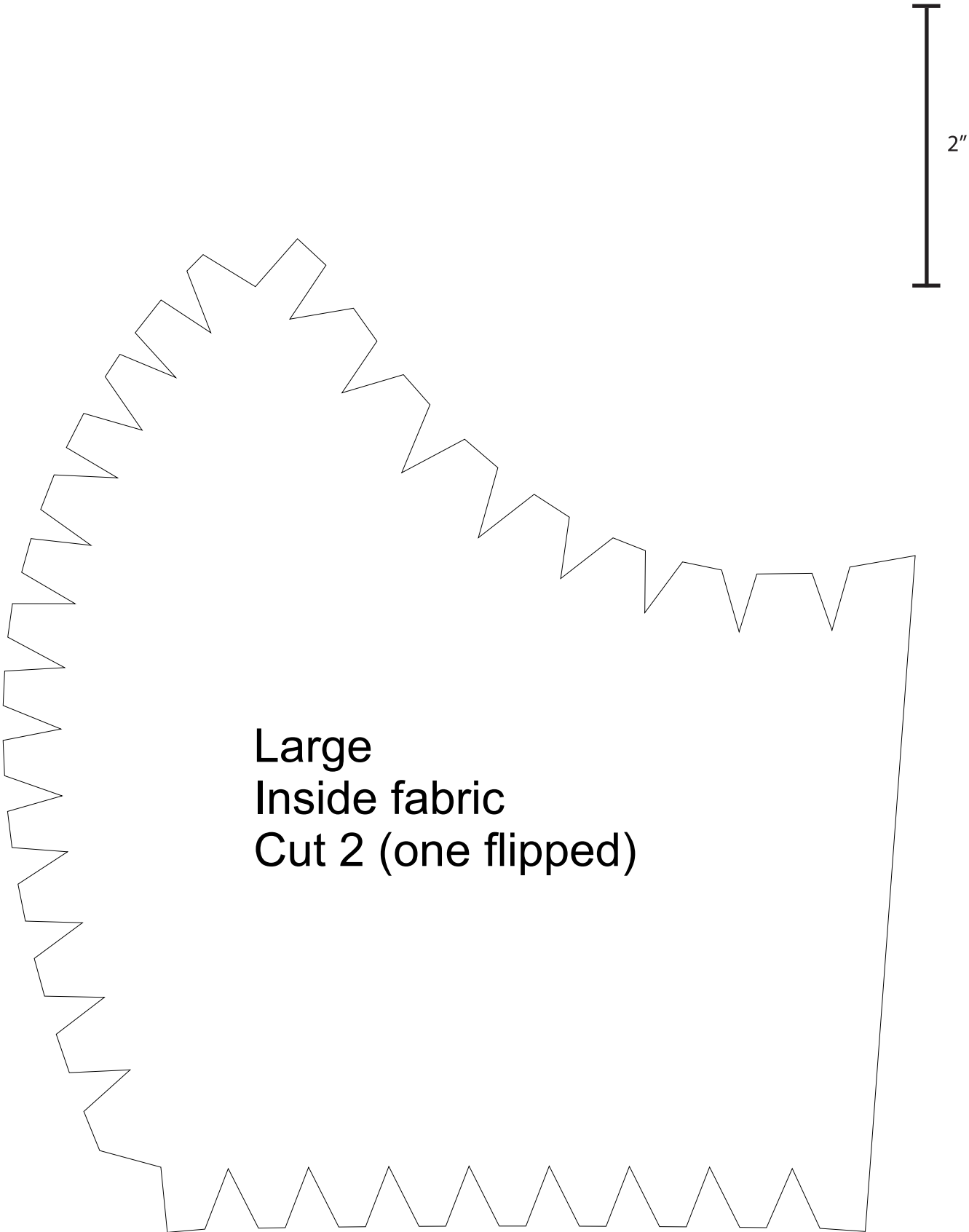
For more information on this pattern, visit <https://chasestreetae.com/blogs/news/slow-the-spread-with-cloth-face-masks>



**Large
Outside fabric
Cut 2 (one flipped)**



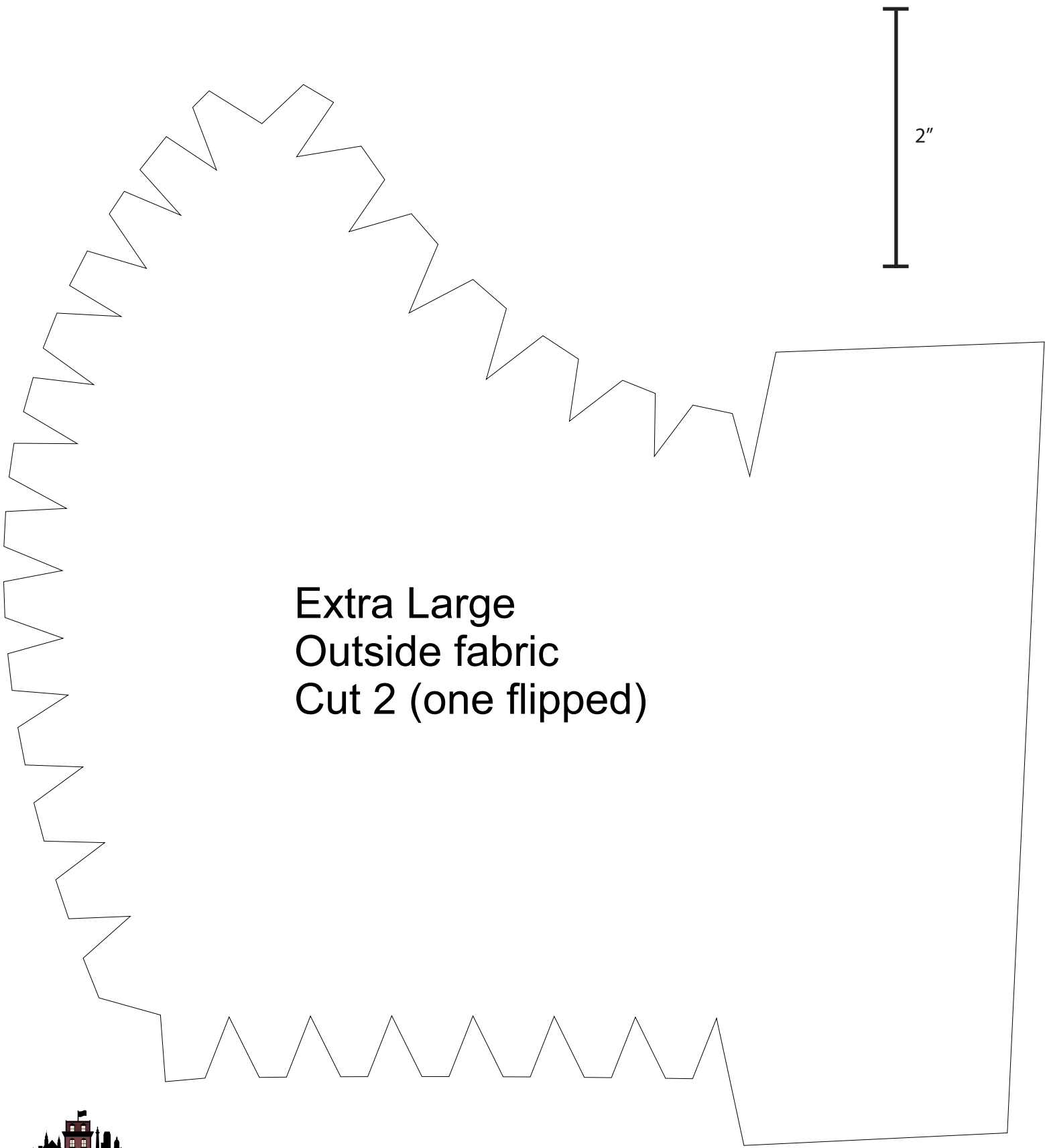
For more information on this pattern, visit <https://chasestreetae.com/blogs/news/slow-the-spread-with-cloth-face-masks>



Large
Inside fabric
Cut 2 (one flipped)



For more information on this pattern, visit
<https://chasestreetae.com/blogs/news/slow-the-spread-with-cloth-face-masks>

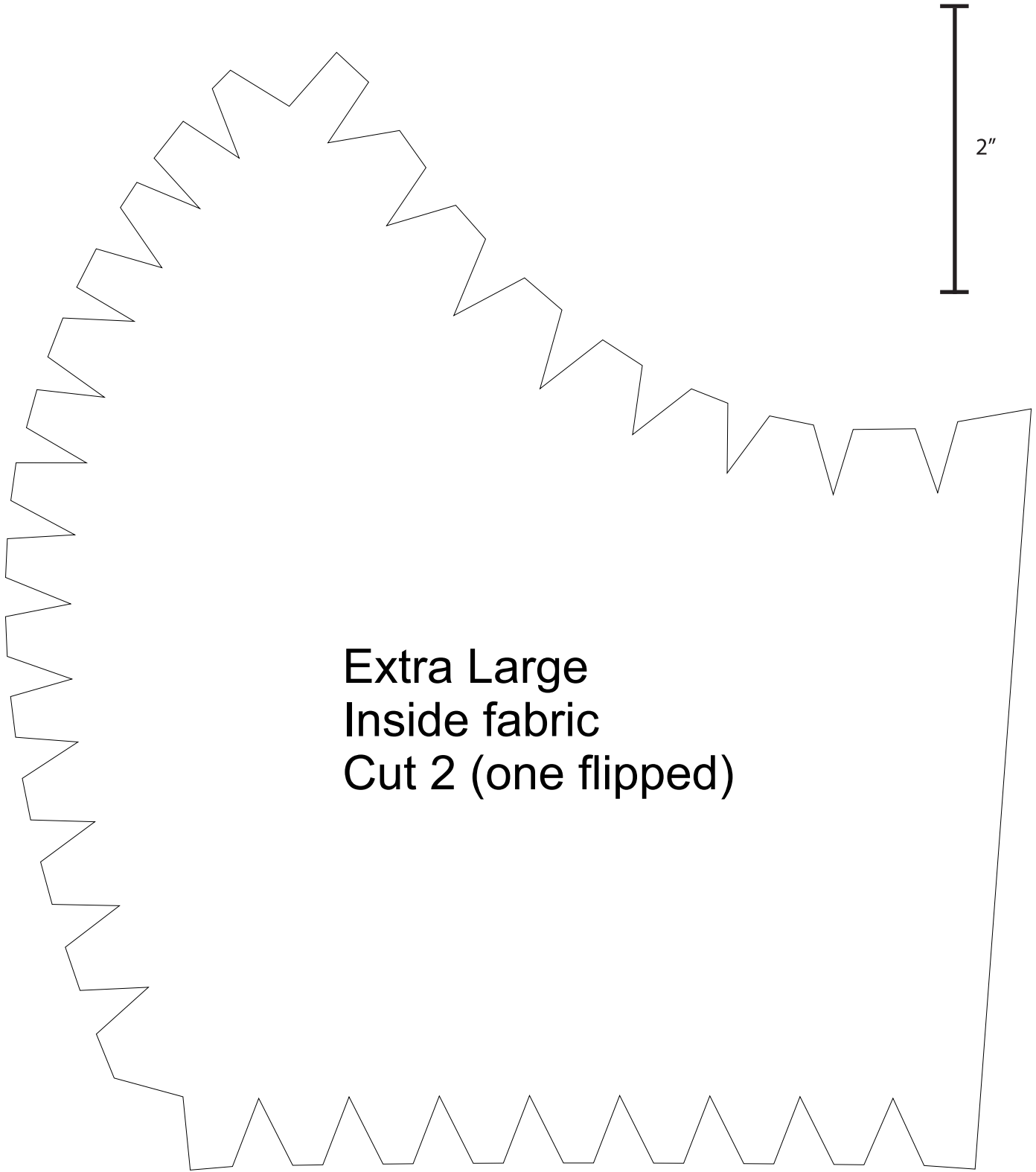


2"

**Extra Large
Outside fabric
Cut 2 (one flipped)**



For more information on this pattern, visit <https://chasestreetae.com/blogs/news/slow-the-spread-with-cloth-face-masks>



Extra Large
Inside fabric
Cut 2 (one flipped)



For more information on this pattern, visit
<https://chasestreetae.com/blogs/news/slow-the-spread-with-cloth-face-masks>