

**CARBONIC STAINLESS STEEL BOTTLE**

**Instruction Manual**

Thank you for purchasing our stainless steel bottle. Before using the product, please read this manual to ensure correct and safe use. Also, please keep this manual in a safe place where you can refer to it at any time.

**For Cold Retention**

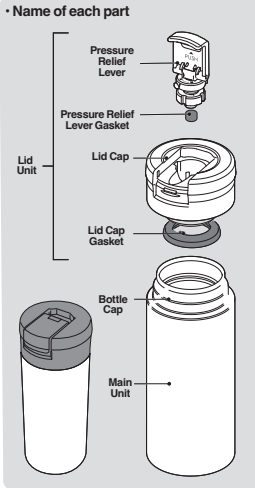
**FSOC-390/560**

**When closing the lid unit, be sure to close it firmly.**

- This product is a "vacuum double structure" bottle with excellent cold retention.
- Although this product is a carbonated bottle, please be aware that bubbles may overflow when using alcohol such as beer or strongly carbonated drinks

**Before Use**

- Before using for the first time, please make sure there is no defects such as scratches or dents on the main unit or crack on the lid unit.
- Do not remove the sticker at the bottom.
- When using it for the first time, please wash the inside of the main unit and lid unit thoroughly with a sponge dampened with dish detergent.



**Before Use**

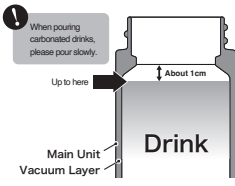
- When using for the first time, wash thoroughly with dishwashing detergent before use.
- Check the product for looseness and damage before use. Do not use if there are any problems.
- Pour a small amount of cold water into the main unit and let it cool for about 1 minute before replacing it. It is effective for keeping the drinks cold.

**1 Remove the lid unit**



**2 Pour Drinks**

Please limit the amount of the drinks as shown in the image below.

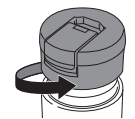


**3 Install the lid unit**



Be sure to attach the lid firmly so that it does not come loose. Also, be careful not to forget to attach the gaskets.

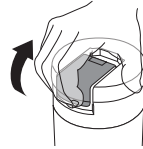
**4 For non-carbonated drinks**



Open the lid unit and have a drink. \*Please be careful as water droplets left in the drinking spout may scatter.  
When finish drinking, stand the main unit upright and close the lid unit. \*Please close firmly so that there is no looseness.

**5 For carbonated drinks**

**1 Raise the pressure relief lever**



The pressure of the carbon dioxide inside may have increased due to shock or vibration, so release the pressure before opening the lid unit.

**2 Press several times slowly**

Do not press the relief lever all at once, but slowly press it several times while observing the situation.  
\*Release the pressure while the bottle is upright.  
\*If you shake the bottle or give it a shock when pouring something with a lot of foam, such as beer, bubbles may overflow. So please wait for a while before releasing the pressure.  
\* Do not remove the pressure relief lever except for maintenance.

3 After releasing the pressure, slowly open the lid unit and drink.  
When finish drinking, stand the main unit upright and close the lid unit

**3 Open and Drink**



**4 Close firmly**



**If red spots/rough spots are attached**

If there are rust-like red spots or rough objects on the inside of the bottle...

**When rust-like red spots appear**

This is due to the adhesion of iron and other substances contained in water. Pour lukewarm water containing about 10% vinegar into the main unit, leave it for about 30 minutes, and then thoroughly wash the inner wall of the inner bottle with a soft sponge brush. Rinse thoroughly with clean water to remove any vinegar residue.

**When a rough object is attached**

Calcium contained in water adheres. Pour lukewarm water containing about 10% citric acid into the main unit, leave it for about 3 hours without attaching the lid unit, and then wash the inner wall of the inner bottle thoroughly with a soft sponge brush. Rinse thoroughly with clean water to remove any citric acid residue.

**Precautions for Use**

- This product is a bottle exclusively for cold retention. Do not put hot drinks in it. Never put anything hot in it. It may cause burns or deformation.
- Do not use for purposes other than keeping the drinks cold.
- Keep out of reach of infants.
- Although this product is a carbonated bottle, alcoholic beverages such as beer and highly carbonated beverages may overflow with bubbles.
- Do not use in places that get hot (such as a sauna) or in cold places.
- When using a carbonated drink in the bottle, do not point it at your face or other people when opening the lid unit.
- Never put the following items in the bottle:
  - Dry ice
  - This is dangerous as the internal pressure may increase and the lid unit may not open, the drink may squirt out, or the lid unit may break and scatter.
  - Perishable items such as milk, dairy products, and fruit juice
  - It may cause the components to rot or deteriorate.
  - Foods containing a lot of salt and acid, such as soup or miso soup
  - Stainless steel is used for the inside of the main unit, but it can cause rust due to salt and acid.
  - Tea leaves or Pulp
  - It will clog the gaps and cause leakage and stain things.



WARNING

• Please refer to the figure in 'How To Use' of the instruction manual for the amount of drink. If too much drink is filled, the lid unit will not open, or the drink will overflow when closed. In addition, it may leak during use and cause dirty.

• Keep away from open flames such as stoves. Also, do not throw it in fire or place it on the stove. It may cause burns, injury, accidents or damage.

• When adding large pieces of ice, do not push the ice in. Please break the ice into small pieces. If you push ice while it is still large, it may cause deformation/breakage of the bottle cap or damage to the inside of bottle.

• Do not put into the freezer. This is dangerous as the main body may be deformed or damaged.

• Do not turn the main unit upside down with a drink inside. This is to prevent any leakage.

• Alcohols such as beer, and carbonated drinks should be thoroughly chilled in the refrigerator before being added into the bottle. If the temperature of the drink is lukewarm, the carbonic acid may escape or gush out easily.

• Please note that if you put something with a strong odor, the odor may remain on the main body or gasket. Follow the care instructions to remove dirt and odors, then dry thoroughly. If you are concerned about the smell of the product, please try "If red spots/rough spots are attached" in "How To Use". If you are concerned about the smell of the gasket, boil only the gasket.

• Do not leave the drink in the product for a long time. It may cause the components to rot or deteriorate. If left as is for a long time, gas will be generated due to decomposition, etc., and the internal pressure will increase, causing the lid unit to become unable to open, drink to squirt out, or the lid unit to break and become splattered, which is dangerous.

• Please finish drinking tea etc. as soon as possible. If stored for a long time, the color and taste of the tea will change.

• If you put sports drinks in the product, please clean it immediately after use. This may cause odor or rust.

• When closing the lid unit, do not tilt or shake the main unit. This may cause the drink to overflow. It may leak again and cause things to get dirty.

• Make sure the lid unit is securely closed. If the lid is not closed properly, drinks may leak if the lid is tilted and cause things to get dirty.

• Due to the structure of the product, the lid unit may get wet when the humidity is high.

• Do not heat in the microwave.

• To prevent leakage, do not place the product horizontally with carbonated drinks in it.

• Never disassemble, repair, or modify the product.

• Avoid shocks such as bumping or dropping. It may cause deformation, cracking, or poor cooling. It may also cause damage to the lid unit. If a shock is applied, wait for a while to release the pressure and then slowly open the lid.

• Do not use while driving as it is dangerous. It is dangerous as it can stain the inside of your car and your clothes. Additionally, drivers may become distracted while driving, which is extremely dangerous. When placing it in a drink holder, please check the strength of the holder before use. If the strength and fixation are insufficient, it may be damaged or come off and fall.

• Do not leave the product in high temperatures such as inside a car or in direct sunlight for a long time. The temperature of the drink will rise and the increased pressure will cause the drink to squirt out.

• When carrying, close the lid unit properly and do not carry by holding the lid unit.

• To prevent leakage, do not let the product lie down when putting it in a bag, etc.

• When you finish drinking, stand the main unit upright and close the lid unit securely. Make sure that the drink does not leak by tilting the product.

• Do not carry the product together with precision equipment such as personal computers or digital cameras. In the unlikely event that the contents leak, it may cause damage to precision equipment.

• Do not intentionally shake the bottle when it is filled with carbonated drinks. It is dangerous because the pressure in the bottle unit becomes too high. There is a risk of rupture.

• Adding ice to a carbonated drink will cause the carbonation to escape.

• Never use this product if it is abnormal or deformed.

• If it is carbonated drink in the bottle, use the pressure relief lever to depressurize the bottle before opening it slowly.

**How To Clean**

Please clean it immediately after use. Use a soft sponge when cleaning.

**Cleaning the main unit (outside/inside)**

After washing the main unit with a soft sponge in lukewarm water diluted with dishwashing detergent, rinse with water. (If the sponge does not reach all the way, use a long, thin sponge for stainless steel bottles.) Wipe off moisture and dry thoroughly.

**Lid Unit**

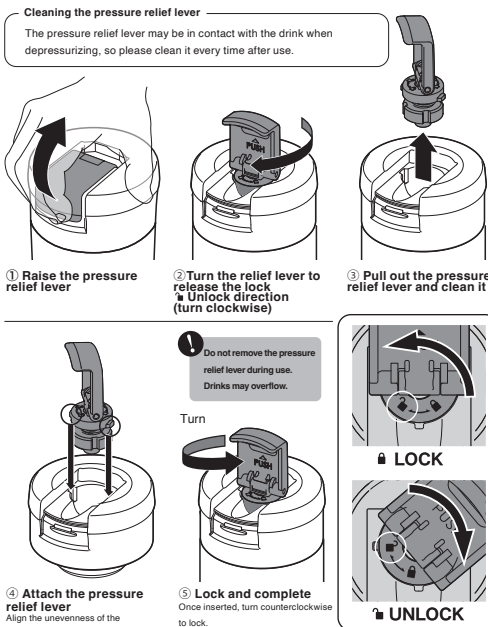
The lid unit can be washed completely. After washing with a soft sponge, wash with water. Wipe off moisture and dry thoroughly.

**Gasket**

Remove the gasket from the lid cap and pressure relief lever before cleaning. After cleaning the gaskets, wipe it dry with a dry cloth and attach it to the pressure relief lever. If it shows deterioration, cracks, or damage, do not use it and replace it.

**Clean Instruction**

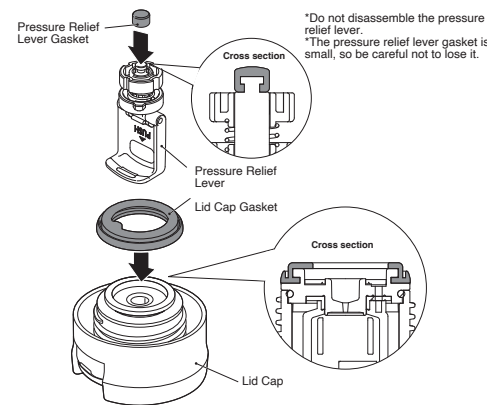
- Please wash thoroughly after use. Inadequate maintenance may cause odor, dirt, and discoloration of the gasket.
- After washing the main unit, wipe it dry immediately. Doing so may leave traces of water droplets or cause rust or stains on objects.
- Do not use thinners, cleansers, metal scrubbers, chemical rags, etc. It may cause scratches, rust, or damage.
- Do not boil the main unit or lid unit (except gaskets), or use in a dishwasher or dish dryer. Doing so may cause deformation or leakage.
- Do not use chlorine bleach. It may cause rust and damage.
- Do not clean while the lid unit is attached to the main unit. While cleaning, please remove each item.
- If you will not be using it for a long time, clean it thoroughly to remove dirt. Dry completely before storing in a clean place.



**How To Attach The Gaskets**

After cleaning, please install the gaskets correctly.

If it is not installed properly, it may leak, so please install it firmly. Also, please check before use.



Note: Please check the actual gasket position and shape.

**Product Specification**

Product Name	Carbonic Stainless Steel Bottle
Main Unit	Inner / Stainless Steel
	Bottle Cap / Stainless Steel
	Body: Stainless steel (acrylic resin coating)
Lid Cap	Polypropylene
Pressure Relief Lever	Polypropylene
Gasket	Silicone
Capacity	0.39L / 0.56L
Cold Retention	Below 9 °C (6 hours)

\*Cold retention effect is when the product filled with cold water up to the bottom of the lid unit at a room temperature at 20°C±2°C, and when the water temperature is 4°C±1°C, the products is placed vertically with the lid unit closed for 6 hours.

MADE IN CHINA