



COMPLEMENTARY

Timeless Wallcoverings

WALLPAPER HANGING GUIDE

Thank you for choosing MINDTHEGAP Complementary Wallpaper!

In order to create beautiful walls with our designs, we recommend you and your decorator to read the instructions below before hanging your wallpaper. Also, for best results we recommend to use a professional decorator to hang your wallpaper.

TOOLS YOU'LL NEED:

- Tape measure, pencil and ruler
- Sharp cutter
- Plumb bob or laser level
- Sponge and a bucket of clean water
- Paste (for non-woven wallpaper)
- Paste brush or roller & tray
- Soft cloth
- Pencil
- Ladder or chair
- Scissors

CHECK THE WALLPAPER:

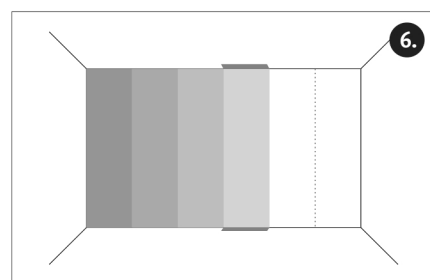
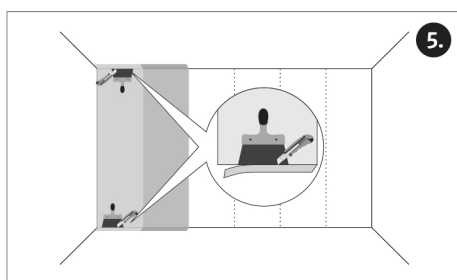
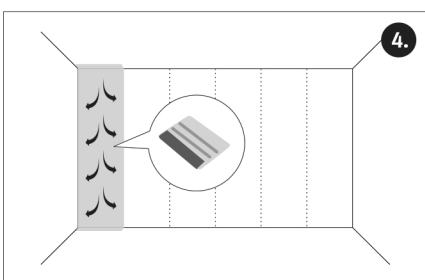
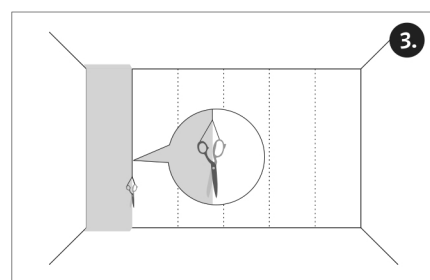
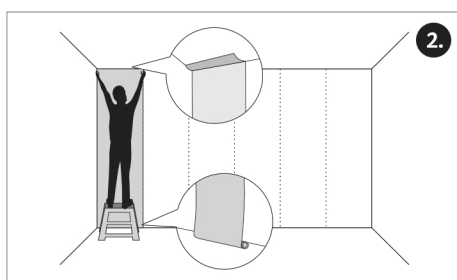
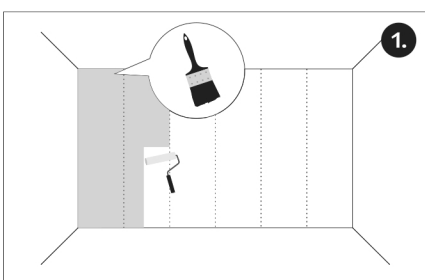
All our Complementary wallpapers come in standard rolls of 10m(393.7in) length and 0,52m(20.5in) width. First of all, please check the rolls you have received and that the colours and pattern match the design you have ordered. Also, please check which way up the design should be and if you have any doubts, check the product with your retailer or search for the design online on our website.

HOW TO PREPARE THE WALL:

- For a seamless result, walls should be clean, smooth and dry.
- Painted walls should be rubbed down, to remove grease and provide a more adherent surface. Glossy paints or other shiny finishes should be rubbed down with sandpaper, while any dents or holes in the walls should be filled and properly fixed.
- Prime the surface of the walls before hanging the wallpaper. If necessary, we recommend to line up the walls using a premium grade lining paper. Always hang the lining paper horizontally, following manufacturer's instruction, and allow it to dry completely before moving forward with the installation.
- Do not hang wallpaper on new plaster or walls that haven't been primed correctly.

HOW TO INSTALL:

- Apply paste onto the wall with a roller, never on the paper. Put enough paste for about 2-3 lengths at a time. For edges or top and bottom, use a brush to apply paste.
- Take one length of wallpaper and apply it on the pasted wall. Leave a few extra centimeters both at the top and bottom, to ensure the wallpaper covers the wall completely. Always double check to keep the straight match of the pattern.
- Smooth the wallpaper strips from top to bottom and from center outwards. Use a brush or roller and make sure there are no air bubbles left.
- Remove the excess wallpaper from the ceiling and floor, using a sharp cutter.
- Apply the next strip of wallpaper by putting the edges together. Double check the pattern matches across both sections.
- Wash away excess paste with a damp soft cloth.



PLEASE NOTICE! When designs have dark backgrounds, you may want to disguise the joins or the edge of the wallpaper with a suitable coloured chalk or pastel.

AFTER INSTALLATION:

Ventilate the room well to ensure complete dryness of walls. Our wallpaper is washable, so you can remove any excess paste left on the surface of the wallpaper, using a damp soft cloth. Due to the printing process, some residue ink may come off the first time you clean the wallpaper. However, this does not affect the true colours in the design or the quality of the substrate. Always wipe off the wallpaper vertically. Never apply any kind of masking tape on the surface of the wallpaper, as this may affect the integrity of the design, which is printed on the surface.

DISCLAIMER:

- Responsibility of wallpaper installation is entirely yours. All the information we provide on installation is given in good faith, but without guarantee, as site conditions are beyond our control.
- Please make sure you notify your supplier of any product faults, prior to installation, but within 14 days after receiving the product.
- We cannot accept responsibility for faulty products after the wallpaper has been hung.