

SUPERLEGGERA PRECISION TEST

(ENGLISH SUMMARY)



FIELD TEST DIVISION - TECHNICAL REPORT

Brand: WOOX

Product: SUPER LEGGERA Vs factory stock

Sampling: 3 pieces (no. 2 Super Leggera + no. 1 factory stock - Remington 700 SA - BDM)

PRECISION TEST PROGRAM

- Verification of correct assembly / mounting
- Verification of components for correct mounting on the weapon
- Identification of optimal tightening torques for action fixing screws (Nm)
- Verification of barrel floating after mounting and screw tightening
- Firing Test Ordinary
- Firing Test “Grouping”
- Wet Test (verification of material's liquid absorption and possible decay of precision)

EXECUTIVE PRECISION PROTOCOL

- Verification of correct coupling action / inlet
- Verification of bolt sliding
- Verification of space for trigger group housing and functionality of the safety device
- Verification of type and length of screws for action/chassis fixing
- Verification of correct coupling of bottom metal on housing
- Verification of any material twisting following tightening
- Firing Test: 3 shots / 100 m paper target - screw tightening torques 4Nm front and 4Nm rear.
- Firing Test 3 shots / 100 m paper target - screw tightening torques 4.5Nm front and 4Nm rear.
- Firing Test 3 shots / 100 m paper target - screw tightening torques 5Nm front and 4.5Nm rear.
- Firing Test 3 shots / 100 m paper target - screw tightening torques 5Nm front and 5Nm rear.
- Verification of precision on targets
- Wet Test: total or partial immersion of the chassis for a period of 12 (twelve) hours and subsequent
- repetition of the precision firing test at 100m on a paper target with optimal tightening torques previously identified. Oil treatment.



BEFORE (FACTORY STOCK)



AFTER (SUPERLEGGERA STOCK)



- Remington 700 Police
- Action: 700 SA
- .308 Win
- Lapua 185 scenar, Federal, Lapua
- Distance: 100m
- Bench
- Bipod + sand bag

BEFORE (FACTORY STOCK)



AFTER (SUPERLEGGERA STOCK)

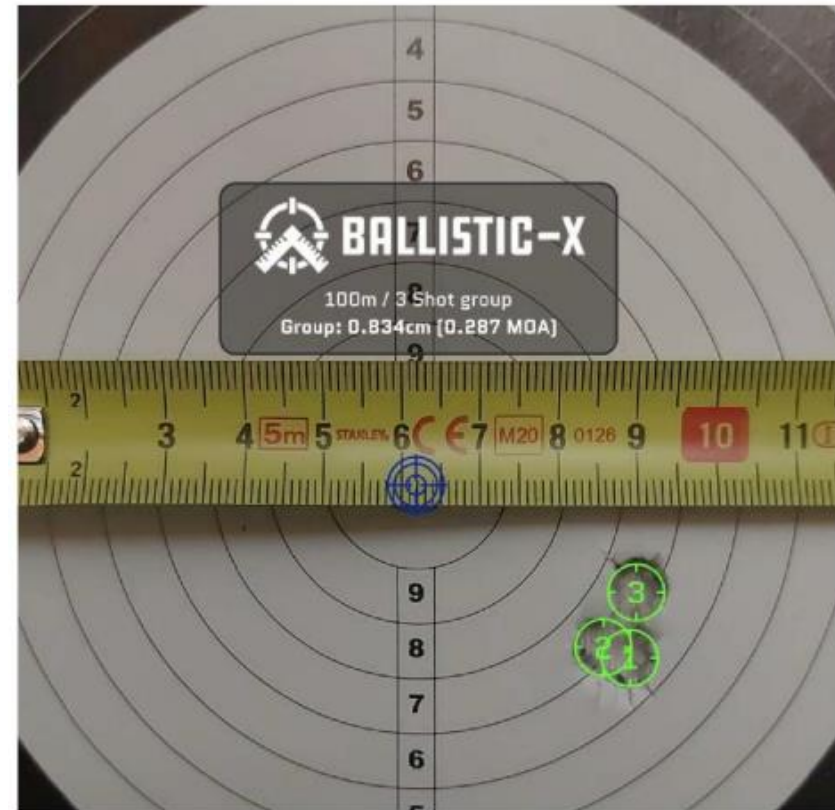


- Remington 700 Police
- Action: 700 SA
- 260 Rem
- Hornady eld -m 140 | Federal | Lapua
- Distance: 100m
- Bench
- Bipod + sand bag

BEFORE (FACTORY STOCK)



AFTER (SUPERLEGGERA STOCK)

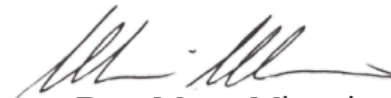


- Remington 700 Police
- Action: 700 SA
- .308 Win
- Focchi Exacta SMK175 GLF
- Distance: 100m
- Bench
- Bipod + sand bag

TEST RESULTS

(...) Comparing the results in terms of precision, the best groupings were obtained with the **Super Leggera stock (0.199 moa at 100m for the 308win and 0.190 moa at 100m for the 260Rem)** compared to the Factory (0.676 moa at 100m for the 308win and 0.893 moa at 100m for the 260 Rem). The final test session was carried out with supports and ammunition specified in their respective technical sheets (5-6-7). Comparing the results in terms of precision, **the groupings obtained with the Super Leggera stock (0.287 moa at 100m) compared to the Factory (0.599 moa at 100m) were significantly better.**

Bastia Umbra, 08/01/2023



Dott. Marco Mirroni

Project Manager MIRONI CONSULTING