



Partner for Test & Measurement
Equipment Services and Data Solutions

Air Sampling Pumps

Air/Gas Monitoring



Gastec

Gastec Injection Detection Kits for Testing Very High Gas Concentrations

Pine Item #

DESCRIPTION:

Nextteq's complete line of Gastec Injection Detection Kits provide an easy and economical method for measuring very high concentrations of propane or carbon dioxide. Everything needed to conduct testing is included in the kit.

To use, simply draw a sample into the provided syringe and insert a pre-calibrated detector tube. Measurement results are ready in moments.

Gastec's detector tubes offer advanced technology, providing more accurate and reliable analysis with lower standard deviation. A direct-read scale printed on each tube means faster sampling time with no confusion, dual scales, or concentration charts. No extra equipment, lab analysis, or testing is necessary.

Gastec Injection Detection Kits are intrinsically safe and ready to use anytime, anywhere.

You can rely on Gastec quality. Gastec systems are designed, manufactured, and calibrated to work together so you know you are getting accurate readings. Gastec operates an ISO-9001 certified facility.



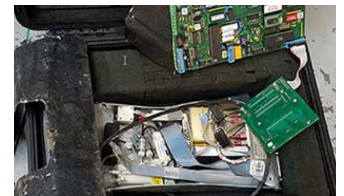
Local Delivery Pick-up



In-Stock Equipment



Repair & Calibration



Rental Protection Plan

Contact a Pine branch near you to request a quote or place an order

VISIT OUR U.S. AND CANADA WEBSITES TO FIND A BRANCH NEAR YOU

United States

www.pine-environmental.com

Canada

www.pine-environmental.ca