



The Specialist in Advanced NDT

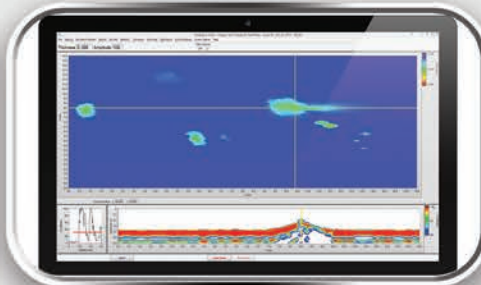


THERMALSCAN-700



Automated Scanner Capable of Scanning 700°F

Scans up to 30" a second, less than 14 lbs., Portable, 2-Axis, 20" Arm



ThermalScan 700

The ThermalScan-700 is the best and the most cost effective solution for performing high temperature AUT scans on surfaces up to 700° F. This automated 2-axis scanner can scan at up to 30" per second on the arm and up to 5" per second on the wheels. It will scan on items ranging from 3" pipe to flat surfaces at temps up to 700°F utilizing its compressed air cooling system. The modular design of the scanner enables in-field switching of scanning arms or motors in minutes. The scanner can perform a conventional raster scans using special high temperature dual focused transducers for simple single channel C-scans. It can also scan circumferentially utilizing the new Eclipse Scientific high temperature phased array probes/wedges. The 24" arm with the secondary drive wheel assembly prevents from having any tracking issues. The ThermalScan-700 can be used at ambient temperatures utilizing probes such as the Olympus Hydroform, 5L60 and 5L64 with 0-degree wedges for high speed and high quality corrosion mapping scans. The scanner can even be used for PA/TOFD weld scanning where tracking systems are not needed.

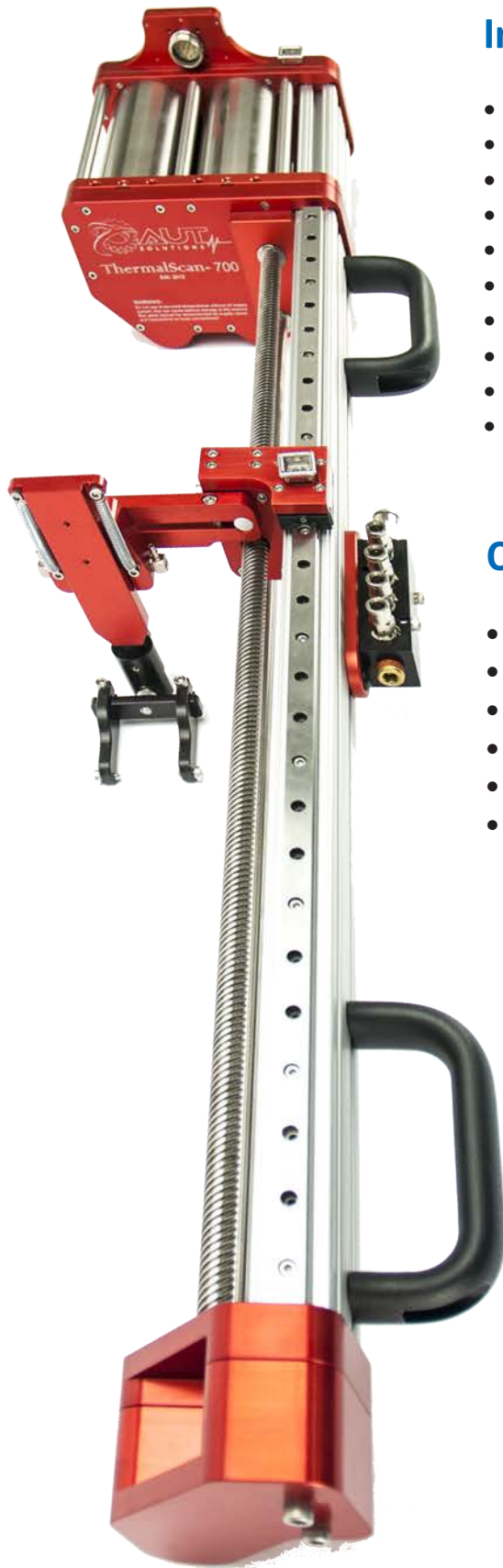
Features

- Fast - scan up to 30"/sec on the arm and 5"/sec on the wheels
- Portable - entire system fits into three travel cases, optional battery pack for up to 8 hours per charge
- Modular - arms and motors can be switched in minutes
- Versatile - works on 3"+ pipe and on surfaces that are up to 700°F
- High temp magnetic wheels - high curie point and long lasting
- Integrated Cooling - Built in cooling for motors and magnets
- Scanner alone with 24" arm weighs only 28.5 lbs
- Compatible - works with ProScan, Omniscan, TD Scan, Pocket UT, VEO, and more



* temperatures greater than 300°F require a compressed air connection and duty cycling





Includes

- 24" catamaran arm
- Air pressure and CFM regulator kit
- High temperature air/fluid tubing
- 2-axis motor controller
- High temp probe gimble
- Power supply
- All Windows OS compatible (32 or 64bit)
- 100 foot umbilical with irrigation and 4 UT lines
- 15 foot high temp umbilical extension
- Three robust shipping cases

Optional Accessories

- 12" or 18" arms (No secondary drive)
- Spare motor kit
- Rechargeable battery pack with charger
- 25 foot, 200 foot, or custom length umbilicals
- Multi-probe kit for TOFD/Phased Array
- High temperature dual focused transducers