



Hygiena

Hygiena EnSURE Touch ATP Luminometer

Pine Item #56378

DESCRIPTION:

Coronavirus / COVID-19 FEATURED ITEM!

EnSURE™ Touch is an advanced cleaning verification and monitoring system that collects, analyzes, and reports data so you can prove the effectiveness of your facility cleaning and infection prevention programs. EnSURE™ Touch features a 5-inch touch screen, wireless sync technology, cloud-based software, and the ability to conduct a wide range of tests. EnSURE™ Touch is designed to adapt to your workplace, providing the data you need to optimize infection prevention and lower HAI rates.

FEATURES:

- Advanced photodiode technology and unique chemistry for maximum sensitivity and durability
- Intuitive smart navigation makes it easy for anyone to use
- Functions like a smartphone
- Syncs data to SureTrend Cloud
- Responsive 5-inch shatter-proof touch screen
- Built-in tilt sensor for more accurate readings
- Add data fields such as room number to test results
- Supports multiple languages

APPLICATIONS:

- Helping hospitals and healthcare facilities improve cleaning compliance
- Evaluate environmental cleaning with ATP testing
- Designed to be used for multiple cleaning verification and infection prevention tests
- Surface ATP testing
- Water ATP testing
- Monitoring the cleanliness of endoscopes
- Measure the effectiveness of cleaning tools, products, and procedures



Contact a Pine branch near you to request a quote or place an order

VISIT OUR U.S. AND CANADA WEBSITES TO FIND A BRANCH NEAR YOU

United States

www.pine-environmental.com

Canada

www.pine-environmental.ca

Product Specifications

Sensitivity:	Extremely sensitive to low levels of contamination
Durability:	Durable outside shell and shatter-proof screen to protect against splashes and wear
Storage:	2 GB
Dimensions:	7" x 3" x 1"
Screen:	Shatter-proof 5" touch screen
Battery:	Powered by a rechargeable Lithium-Ion battery with USB-C charging (Battery life depends on device settings and amount of use)
Connectivity:	Connects to software via Wi-Fi
General:	<ul style="list-style-type: none">• Low Voltage Directive 2014/35/EU• EMC Directive 2014/30/EU• RoHS Directive 2011/65/EU• PAH (Polycyclic Aromatic Hydrocarbons)
Safety:	<ul style="list-style-type: none">• BS EN 61010-1:2010, IEC 61010-1:2010• UL 61010-1:2012 R4.16• CAN/CSA C22.2 NO. 61010.1-12 + GI1 + GI2 (R2017)



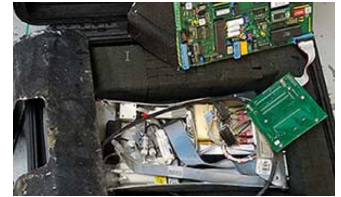
Local Delivery Pick-up



In-Stock Equipment



Repair & Calibration



Rental Protection Plan