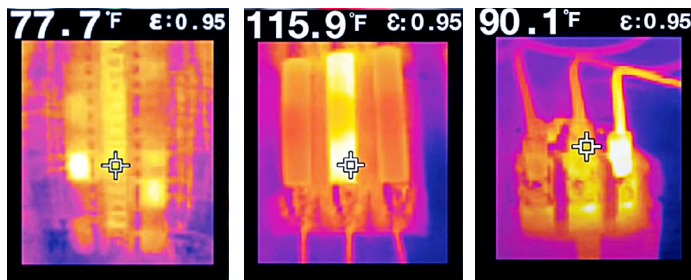




Partner for Test & Measurement
Equipment Services and Data Solutions

Thermal Imaging Cameras Portable Remote Visual Inspection

SEE VIDEO: <https://youtu.be/qm1zs1cmNKE>



Teledyne FLIR

Teledyne FLIR TG165 Spot Infrared Camera

Pine Item #55223

DESCRIPTION:

The FLIR TG165 Spot Thermal Cameras bridge the gap between single spot infrared thermometers and FLIR's legendary thermal cameras. Equipped with FLIR's exclusive Lepton® micro thermal sensor, these cameras let you see the heat so you know exactly where to target the measurement spot. Easily find unseen hot and cold spots for instant troubleshooting, and store images and data to show customers and include in reports.

FEATURES:

- Instantly shows what's hot and where to aim
- Eliminates blind guesswork
- 24:1 spot size ratio for safer distance measuring
- Intuitive to operate with no special training required
- Easily save images and data for documentation
- Download images fast over USB or from removable micro SD
- Built to withstand a 2-meter drop

APPLICATIONS:

- Detecting elevated body temperature
- Electrical troubleshooting
- Warm pipe in a wall
- Mechanical overheating
- Refrigeration issues

Contact a Pine branch near you to request a quote or place an order

VISIT OUR U.S. AND CANADA WEBSITES TO FIND A BRANCH NEAR YOU

United States

Canada

www.pine-environmental.com

www.pine-environmental.ca

Product Specifications

Accuracy	±1.5% or 1.5°C (2.7°F)
Detector Type	Focal plane array (FPA), uncooled microbolometer
Field of view (FOV)	50° x 38,6°
IR Resolution	80 x 60 pixels
Laser	Dual diverging lasers indicate the temperature measurement area, activated by pulling the trigger
Object Temperature Range	-25°C to 380°C (-13°F to 716°F)
Thermal Sensitivity/NETD	<150 mK



Distance to Spot Ratio

Distance to Spot ratio relates to the distance from a target object and the diameter of the temperature measurement area from that distance. The TG165 has a Distance to Spot Ratio of 24:1. Meaning at 24" you are measuring a 1" diameter.

This comes with a rechargeable Lithium-ion battery via Micro USB connection. The memory slot holds an 8Gb Micro SD Card. This durable unit is easy to use and is a must have tool for your toolbox.



SEE VIDEO:
<https://youtu.be/qm1zs1cmNKE>



Local Delivery & Pick-up



In-Stock Equipment



Repair & Calibration