



Fluke

Fluke Ti25 Thermal Camera

Pine Item #54304

DESCRIPTION:

Coronavirus / COVID-19 FEATURED ITEM!

The ultimate tools for troubleshooting and maintenance

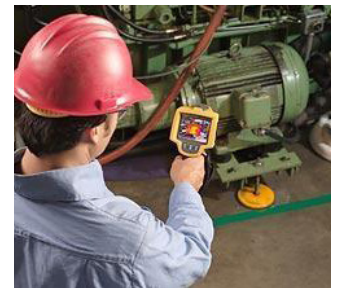
This thermal imager is the perfect tool to add to your problem-solving arsenal. Built for tough work environments, this high-performance, fully radiometric infrared camera is ideal for troubleshooting electrical installations, electro-mechanical equipment, process equipment, HVAC/R equipment, and others.

IR-Fusion® Technology

See things both ways “infrared and visual (visible light) images combined together communicating critical information faster and easier” traditional infrared images are no longer enough. IR-Fusion, a patent-pending technology that simultaneously captures a digital photo in addition to the infrared image and combines it together, taking the mystery out of IR image analysis. IR-Fusion is standard on Fluke Ti25.

FEATURES:

- Enhanced problem detection and analysis capabilities with IR-Fusion® Technology. Simply scroll through the different viewing modes quickly to better identify trouble areas in Full IR thermal picture-in-picture or automatic blend visual and thermal images.
- Optimized for field use in harsh work environments.
- Engineered and tested to withstand a 2 m (6.5 ft) drop - ;When was the last time you dropped a tool?
- Withstands dust and water tested to an IP54 rating.
- Delivers the clear crisp images needed to find problems fast.
- Identify even small temperature differences that could indicate problems with excellent thermal sensitivity (NETD).
- Intuitive three-button menu is easy to use simply navigate with the push of a thumb.
- Reflected background temperature (reflected temperature compensation)
- No need to carry pen and paper record findings by speaking into the camera. Voice annotations can be recorded with every image you take. Voice comments are saved along with individual images for future reference.
- Everything needed to get started is included. Training DVD is now included free. See how easy it is to set up your thermal imager create professional reports with SmartView software and learn thermography theory with step-by-step video instructions.
- Adjustable hand strap for left- or right-handed use.



Contact a Pine branch near you to request a quote or place an order

VISIT OUR U.S. AND CANADA WEBSITES TO FIND A BRANCH NEAR YOU

United States

www.pine-environmental.com

Canada

www.pine-environmental.ca

Product Specifications

| | |
|--|--|
| Temperature measurement range (not calibrated below -10 °C) | -20 °C to +350 °C (-4 °F to + 662 °F) (two ranges) |
| Temperature measurement accuracy | ± 2 °C or 2 % (whichever is greater) |
| On-screen emissivity correction | Yes |
| Field of view | 23° x 17° |
| Spatial resolution (IFOV) | 2.5 mRad |
| Minimum focus distance | Thermal lens: 15 cm (6 in)\nVisible (visual) light lens: 46 cm (18 in) |
| Focus | Manual |
| Image frequency | 9 Hz refresh rate |
| Detector type | 160 X 120 focal plane array uncooled microbolometer |
| Infrared lens type | 20 mm F = 0.8 lens |
| Thermal sensitivity (NETD) | = 0.09 °C at 30 °C target temp. (90 mK) |
| Infrared spectral band | 7.5 µm to 14 µm |
| Visual camera | 640 x 480 resolution |
| Voice annotation | 60 seconds maximum recording time per image; reviewable playback on imager |
| Storage medium | SD memory card (2 GB memory card will store at least 1200 fully radiometric (.is2) IR and linked visual images each with 60 seconds voice an |
| File formats | Non-radiometric (.bmp) or fully-radiometric (.is2) No analysis software required for non-radiometric (.bmp) files |
| Export file formats w/ SmartView® software | JPEG BMP GIF PNG TIFF WMF EXIF and EMF |
| Operating temperature | -10 °C to +50 °C (14 °F to 122 °F) |
| Storage temperature | -20 °C to +50 °C (-4 °F to 122 °F) without batteries |
| Relative humidity | 10 % to 90 % non-condensing |
| Display | 9.1 cm (3.6 in) diagonal landscape color VGA (640 x 480) LCD with backlight (selectable bright or auto) |
| Controls and adjustments | User selectable temperature scale (°C/°F)\nLanguage selection\nTime/Date set |



Local Delivery Pick-up



In-Stock Equipment



Repair & Calibration



Rental Protection Plan