



Partner for Test & Measurement
Equipment Services and Data Solutions

Dataloggers & Transducers

Water Level/Quality



Solinst

Levellogger 3001-EDGE LT M10F30

Pine Item #51911

DESCRIPTION:

The 3001 Levellogger® Edge is a highly accurate water level and temperature datalogger. It is ideal for recording water levels in monitoring and production wells, boreholes, lakes, rivers, tanks, etc.

It has an accuracy of 0.05% FS and memory for up to 120,000 sets of readings using the data compression option. The datalogger, 10-year battery, Hastelloy pressure sensor and temperature sensor are factory-sealed in a 22 mm x 159 mm (7/8" x 6.25") housing with Titanium-based coating for corrosion resistance. The sealed design makes maintenance and cleaning a snap, and offers protection from power surges caused by pumps or lightning.

User-defined schedule, linear, and event-based sampling are options. The Barologger Edge and the data wizard offer the most accurate and easy method to account for barometric pressure.



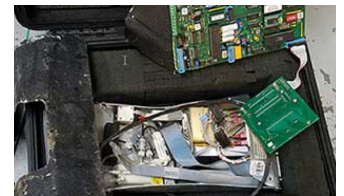
Local Delivery Pick-up



In-Stock Equipment



Repair & Calibration



Rental Protection Plan

Contact a Pine branch near you to request a quote or place an order

VISIT OUR U.S. AND CANADA WEBSITES TO FIND A BRANCH NEAR YOU

United States

www.pine-environmental.com

Canada

www.pine-environmental.ca