



Isco

Isco 750 Area Velocity Flow Module

Pine Item #51785

DESCRIPTION:

The sensor on the 750 module uses patented Doppler technology to directly measure average velocity in the flow stream. An integral pressure transducer measures liquid depth to determine flow area. The 6712 sampler then calculates the flow rate by multiplying the area of the flow stream by its average velocity.

The 750 gives you greater accuracy in applications where weirs or flumes are not practical, or where submerged, full pipe, surcharged, and reverse flow conditions may occur. With area velocity, you don't have to estimate the slope and roughness of the channel. And Isco's exclusive 500 kHz Doppler penetrates farther into deep flow streams than 1 MHz system, whose shorter wavelength can cause them to give "nearsighted", velocity measurement in typical wastewater applications. The Doppler system continuously profiles the flow stream, eliminating profiling and calibration required by electromagnetic systems.



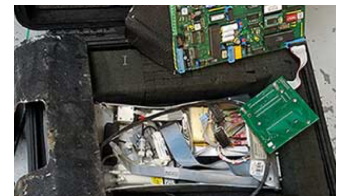
Local Delivery Pick-up



In-Stock Equipment



Repair & Calibration



Rental Protection Plan

Contact a Pine branch near you to request a quote or place an order

VISIT OUR U.S. AND CANADA WEBSITES TO FIND A BRANCH NEAR YOU

United States

www.pine-environmental.com

Canada

www.pine-environmental.ca