



Partner for Test & Measurement
Equipment Services and Data Solutions

Thermal Imaging Cameras

Remote Visual Inspection (RVI)

FLIR Systems

Flir BCAM SD Infrared Camera

Pine Item #51552

DESCRIPTION:

Coronavirus / COVID-19 FEATURED ITEM!

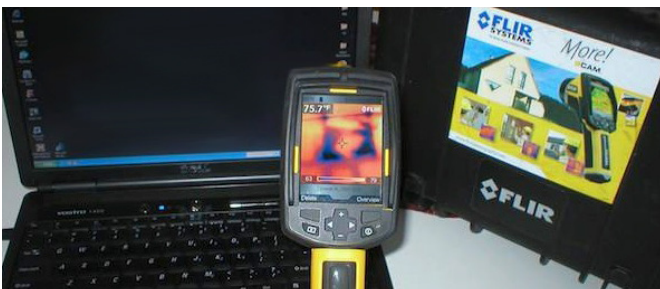
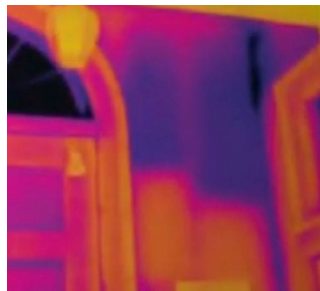
Infrared (IR) thermography with FLIR cameras is a non-contact method for detecting the difference in temperature between a problem area and its surroundings. Depending on the underlying cause, the problem area may be warmer or colder than its surroundings. This temperature difference is clearly visible in the camera

FEATURES:

- Field of view: fixed 25° x 25°
- Spectral range: 7.5 to 13µm
- Stores 1,000 Radiometric JPEG Images
- 120 x 120 pixel detector
- Razor-Sharp, Thermal Image Quality
- Long, 7 Hour Battery Life
- Ultra-Portable, Weighs Just 1.2 lbs
- Built-in Laser LocatIR
- Removable SD Memory Card
- Includes New, Powerful QuickReport Software
- Easy-to-Operate, Large 3.5 Full Color LCD
- Dew Point, Insulation and Color Alarm Features

APPLICATIONS:

- Monitoring and diagnosing building conditions
- Structural and moisture issues
- Rodent or pest recovery
- Energy loss and hot spots
- Reveal wet conditions behind surfaces
- Home inspections



Contact a Pine branch near you to request a quote or place an order

VISIT OUR U.S. AND CANADA WEBSITES TO FIND A BRANCH NEAR YOU

United States

www.pine-environmental.com

Canada

www.pine-environmental.ca

Product Specifications

Temperature range	14°F to 212°F (-10°C to 100°C)
Image Storage	1000 Images (SD card memory)
Emissivity	0.1 to 1.0 (adjustable)
Field of view/min focus distance	25° X 25°/0.3m
Thermal sensitivity (N.E.T.D)	<0.10°C at 25°C
Detector Type	Focal plane array (FPA) uncooled microbolometer; 120 X 120 pixels
Spectral range	7.5 to 13µm
Display	3.5" color LCD
Video output	MPEG-4 via USB
Image Controls	Palettes (Iron, Rainbow, and Black/White), level, span, auto adjust (continuous/manual)



Video:
<https://youtu.be/0vWP1ow-BuXo>

Local Delivery Pick-up

In-Stock Equipment

Repair & Calibration

Rental Protection Plan