



Honda

Honda EU3000iS Generator

Pine Item #51512

DESCRIPTION:

The Honda Super Quiet EU3000iS can power large power tools and even a roof top RV air conditioner unit. The Super Quiet series uses Honda's patented technology, Eco-Throttle which adjusts the engine speed to maximum efficiency depending on the load, thus reducing fuel consumption, engine noise, and emissions. This generator offers a 3.4 gallon fuel tank, provides a longer run time and weighs 134 lbs. This generator can be very portable with the wheel option kit. Some people might consider linking two EU2000 generators instead of having one EU3000iS depending on run time and fuel capacity.

FEATURES:

- 3000 watts, 120V
- Power for your furnace, fridge, microwave, most 13,500 BTU RV AC units, and more
- Super quiet
- Convenient electric start
- Fuel efficient - up to 20 hrs on 3.4 gals of gas
- Inverter - stable power for computers and more

APPLICATION:

This generator can power the following common applications. Please note: not all applications can be powered simultaneously.

- RV Air Conditioner (up to 13500 BTU)
- Refrigerator or Freezer (Energy Star)
- Microwave Oven
- Incandescent Lights
- Portable fan
- Furnace Fan, gas or fuel oil
- TV / DVD
- Hair Dryer
- Coffee Maker
- Computer
- Garage Door Opener
- Blender

Contact a Pine branch near you to request a quote or place an order

VISIT OUR U.S. AND CANADA WEBSITES TO FIND A BRANCH NEAR YOU

United States

www.pine-environmental.com

Canada

www.pine-environmental.ca

Product Specifications

Engine	Honda GX200
Displacement	196cc
AC Output	120V 3000W max.(25A) 2800W rated (23.3A)
Receptacles	20A 125V Duplex 30A 125V Locking Plug
DC Output	12V 144W (12A)
Starting System	Recoil electric
Fuel Tank Capacity	3.4 gals.
Run Time per Tankful	7.2 hrs. @ rated load 20 hrs. @ 1/4 load
Dimensions (L x W x H)	25.8\" x 18.9\" x 22.4\"
Noise Level	58 dB(A) @ rated load 49 dB(A) @ 1/4 load
Dry Weight	134 lbs.
Residential Warranty	3 Years
Commercial Warranty	3 Years



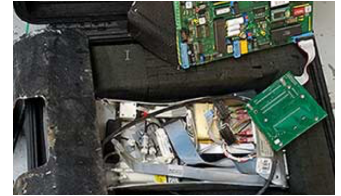
Local Delivery Pick-up



In-Stock Equipment



Repair & Calibration



Rental Protection Plan