



Partner for Test & Measurement
Equipment Services and Data Solutions

Air Sampling Pumps

Air/Gas Monitoring



RAE Systems

RAE Systems Piston Hand Pump LP-1200

Pine Item #51377

DESCRIPTION:

The LP-1200 Hand Pump makes it easy to manually measure the presence of toxic and combustible gases. This hand-powered pump works seamlessly with RAE Systems colorimetric tubes. The ergonomic, durable device features a spring-less piston design and solid metal construction, and can be used even with multiple layers of gloves. A built-in counter keeps track of the number of strokes, providing a reliable way to draw 50 ml and 100 ml samples for accurate readings.

FEATURES:

- Hand-powered pump for use with colorimetric tubes
- Fits wide range of tubes
- Solid metal construction
- Draws fixed volume of gas – either 50 ml or 100 ml samples
- Built-in counter keeps track of number of strokes • Can be used with multiple layers of gloves

APPLICATIONS:

- Emergency Response
- Environmental Cleanups/Remediation
- Hazmat Response
- Leak Detection



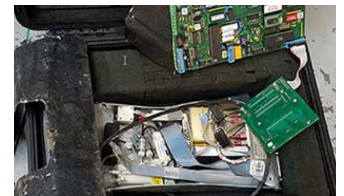
Local Delivery Pick-up



In-Stock Equipment



Repair & Calibration



Rental Protection Plan

Contact a Pine branch near you to request a quote or place an order

VISIT OUR U.S. AND CANADA WEBSITES TO FIND A BRANCH NEAR YOU

United States

www.pine-environmental.com

Canada

www.pine-environmental.ca