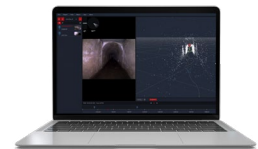


SEE VIDEO:

<https://youtu.be/zC6bifd5a1c>



## ASIO Features

The flying unit

- Up to 24 minutes flight time
- 1 kg (2.2 lbs) total mass
- Ø395 mm, Height 290 mm
- 80 dB @ 1 m noise level
- ±90° Camera gimbal range
- Super bright oblique lighting
- 0 to 40° (32 to 104 F) temp. range
- Up to 3.5 m/s collision resilience
- Battery Management System
- 20 sec battery swapping time
- 1.5 h (80% in 40') batt. charge

## ASIO Flight Features

The flight app

- Remote FHD live stream
- 4K & Radiom. IR cameras
- Visual-lock (GPS free stab.)
- Wall-lock stabilization
- Ground-lock stabilization
- Roof-lock stabilization
- Obstacle repulsion
- Rewind flight-path
- Photogrammetry mode
- Recovery mode
- Image ISO control

## ASIO Explore Features

The post-processing app

- 3D map generation (p. cloud)
- POI localization
- Video & 3D map sync.
- Real temperature monitoring
- Custom report generation

Flybotix

## ASIO PRO Drone

**The complete indoor, confined space inspection solution to streamline your missions!**

This revolutionary drone is designed to help you perform fast, efficient, and safe inspections in your industrial assets. ASIO can fly for up to 24 minutes, leading to more than twice the time on site to perform the inspection and extend the accessible range by a factor of two.

### APPLICATIONS:

- Confined space inspections
- Renewable energies - wind turbines, hydropower penstocks
- Oil & gas - smokestacks, tanks, oil rigs, refineries
- Smart cities - wastewater & storm sewers, drainage systems
- Chemical plants, security, elevator shafts, power plants

Contact us for a quote and to discuss your project.



Visit Pine's Website



[www.pine-environmental.com](http://www.pine-environmental.com)



Pine Environmental

**RENTALS:** Daily, Weekly, Long-Term **PURCHASES:** Rent-To-Own, Finance

# Product Specifications



## What's In Your Box

- ASIO Drone
- 3x Battery Packs
- 2x Pairs of Spare Propellers
- Safety Vest
- Toolkit & Manual
- Remote Control
- ASIO Range Extender (Optional)
- Spare Cage (Optional)
- Battery Charger

<b>Flight time:</b>	up to 24 minutes
<b>Weight:</b>	1kg (2.2 lbs)
<b>Dimensions:</b>	Ø395mm, H295mm (Ø15.6in, H11.6in)
<b>Max transmission distance:</b>	outdoor: up to 16km (direct line of sight); indoor: tested from basement to 2nd floorLED
<b>Lighting:</b>	max 10K lumen, dimmable and adjustable
<b>Noise:</b>	level80dB @ 1m; 70dB @ 5mRGB
<b>Camera:</b>	true 4K @ 30 fpsIR
<b>Camera:</b>	160x120px @ 9fps
<b>Pictures resolution:</b>	0.2mm/px @ 30cm
<b>Gimbal system:</b>	±90° (damped)
<b>Advanced algorithms:</b>	Autopilot; Wall-lock; Wall-scan; Obstacle repulsion; Safety slowdown; Rewind; Self-righting; Auto-landing
<b>Operating temperature range:</b>	0°C to 50°C (32°F to 86°F)



**Video:**  
<https://youtu.be/zC6bifd5a1c>



**Local Delivery & Pick-up**



**In-Stock Equipment**



**Repair & Calibration**