

# USER GUIDE - MindMe Pro SM

## Starter Guide

### MindMe Pro SM Overview

The MindMe Pro SM (MMPSM) combines a mobile phone, screen, a GPS device, and GPRS satellite technologies to assist in tracking and monitoring vulnerable individuals in one easy to use solution



### Turning ON MMPSM

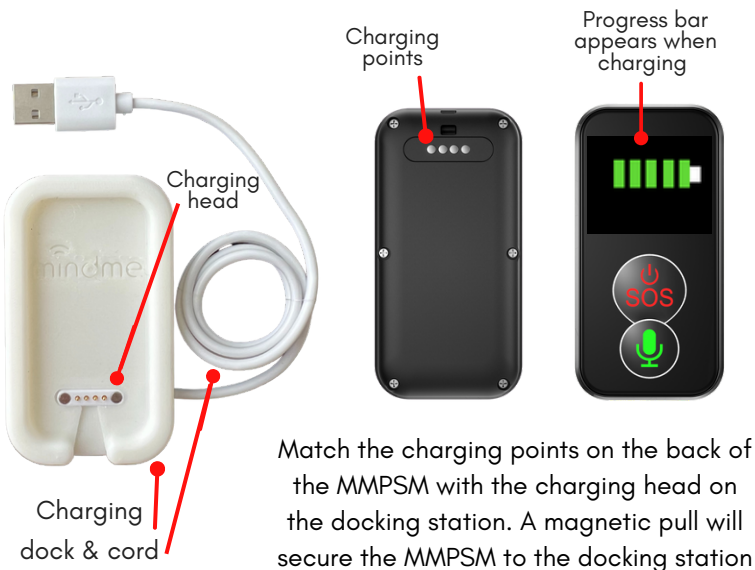
Press and hold down the On & SOS button for 5 secs. The digital screen will turn on, displaying time and date, mobile signal strength & battery level



#### NOTE

- The MMPSM may take up to 30 secs to boot up
- The Digital screen will automatically turn off after approx 30 secs (sleep mode), to conserve battery life. Note: The device is still turned on when the screen is in sleep mode.
- To turn on/off the digital screen, quick press the SOS button.

### Charging



#### NOTE

- Before using your MMPSM please charge the device for 2 - 3 hours.
- MMPSM takes approx. 3 hours to fully charge
- After charging to 100% the battery will last up to 24 - 48 hours, depending on usage
- When MMPSM is fully charged the battery progress bar on the screen will display 100%
- When the battery charge falls below 20% the MMPSM will send an alert to the contacts who have the Aibeili Plus APP loaded on their mobile phone



It is a good idea to charge the MMPSM next to the wearer's bed. That way when the wearer goes to bed the MMPSM can be placed on the charger and be fully charged, ready to go when the wearer gets up in the morning. This method also helps in create a routine for the wearer as well as the carer.

# USER GUIDE - MindMe Pro SM

## Starter Guide

### Charging Tips

Refer to the charging tips provided below if your device is not establishing a proper connection with the charger:

#### Cleaning Charging Points



Regularly use a clean, lint-free cloth to wipe the charging points to prevent the accumulation of grime

#### Device Reset



If the MMPSM loses all battery power prior to being recharged, press the reset button on the side of the device prior to re-charging the device. Note: All programmed information will remain unchanged

#### Charging Dock



Place the charging dock in a facedown position and press the back of the charging head down to ensure that the gold dots on the front are elevated above the surface of the docking station

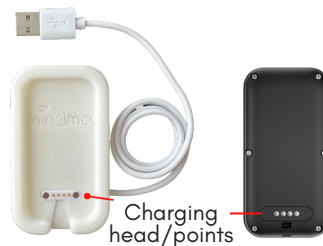
### Using the MMPSM for the first time

1



Thread lanyard string through the lanyard attachment bridge on the MMPSM, then thread the top end of lanyard through and pull tight

2



Place device in the charger (ensure the charging points on MMPSM and base match up, you will feel a magnetic pull). Charge for 2 - 3 hours

3



To turn on the MMPSM, press and hold down the On & SOS button for 5 secs. The digital screen will turn on, displaying time and date. The MMPSM is operational

### Testing the MMPSM

We recommend conducting a thorough test of your MMPSM before use to ensure that both the wearer and designated SOS contacts are familiar with the device's operation in real-life scenarios. Additionally, it is recommended to perform periodic tests on the MMPSM to ensure its proper functionality.

To carry out testing the MMPSM follow the instructions outlined in the following 'Emergency Procedure' section of the User Guide

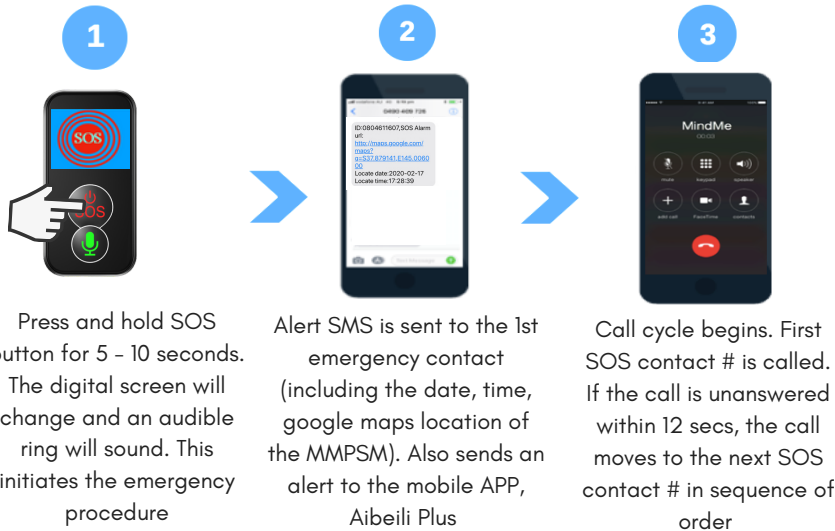
#### NOTE

Before conducting tests, inform the assigned SOS contacts that you will be testing the MMPSM, as they will receive a phone call from your MMPSM.

# USER GUIDE - MindMe Pro SM

## Starter Guide

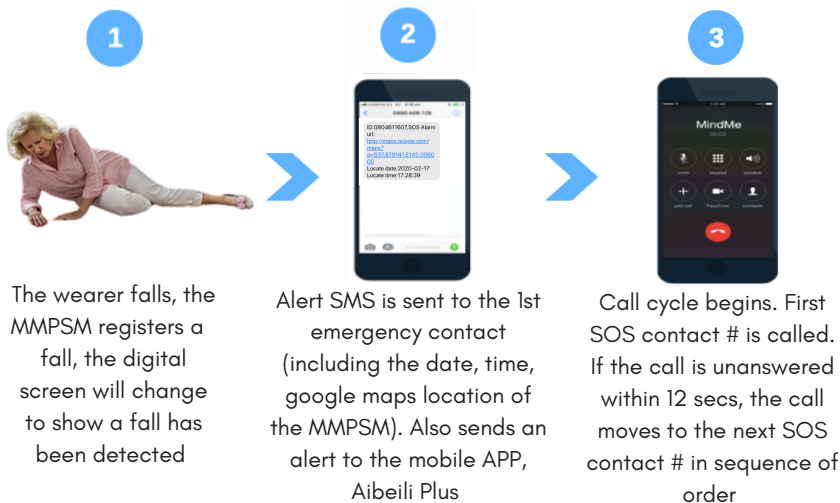
### Using the MMPSM Emergency Procedure



#### NOTE

- Emergency contacts can be either mobiles and landlines.
- All emergency contacts can receive an alert via the mobile APP, Aibeili Plus (note: Emergency contact needs to be logged into mobile APP to receive alerts)
- To cancel the SOS alert, quickly press the SOS button.

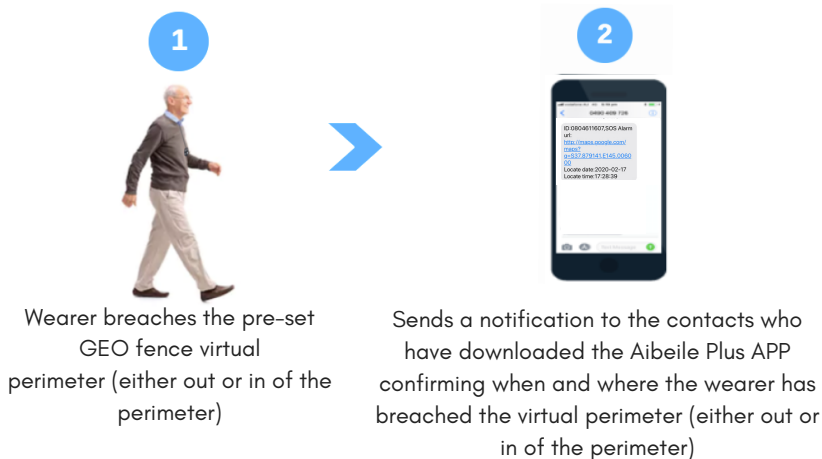
### Fall Detection Procedure



#### NOTE

- If a false alert is detected, the wearer can cancel the alert within 10 secs by quickly pressing the SOS button.
- For the MMPSM to register a fall it needs to fall from a height of 1 meter at a 45 degree angle and end with a sudden hard impact
- The MMPSM may not detect a fall if the wearer falls on a soft surface i.e a bed or couch

### GEO Fencing Procedure



#### NOTE

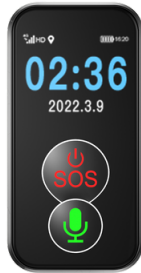
- The GEO fence perimeter can be set from a minimum of 200m from the point location. i.e. 200m circle around the house
- If the GEO fencing feature has been requested upon purchase, please contact MindMe on 1300 776 907 to assist with initial setup.
- The Aibeile Plus APP will automatically check and notify any breaches of the GEO fence every 10 mins
- To get the most up to date location reading press the locate icon on the map page of the mobile APP

# USER GUIDE - MindMe Pro SM

## Starter Guide

### Cancelling a false alert

In circumstances where the SOS or fall alert has been accidentally activated, press the On & SOS button to cancel the alarm.



On & SOS button

### Audible time and date

To hear the time and date audibly sound, press the 'talking clock button' 2 times in quick succession.



talking clock button

### Incoming call

When a pre-programmed contact calls into the MMPSM, the device will audibly ring 2 times and automatically answer. To end the call quick press the On & SOS button.



On & SOS button

### Digital Screen

The digital screen can be temporarily turned off (sleep mode) while the device is turned on. Quick press the On & SOS button and the screen will turn black. NOTE: To turn the screen back on follow the same procedure



Digital screen

### Getting a GPS reading



Prior to using your device, the MMPSM will need to get an initial satellite fix for GPS location. Turn on the MMPSM and either take the MMPSM outdoors or place it near a window so the MMPSM can get a fix on the overhead satellites. This could take up to 10 minutes.

#### NOTE

This process must be completed when turning on the MMPSM or if the device has been reset to get an accurate GPS location.

## MMPSM Mobile APP

### Downloading & Log into MMPSM Mobile APP

To monitor and edit the settings on the MMPSM, you will need to download and log into the mobile APP (AIBEILE Plus). Your username and login details are detailed on the 'Settings and Login Information' sheet provided.

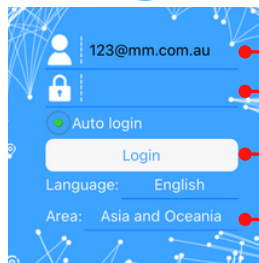
1



AIBEILE Plus  
Lifestyle

Download the Aibeile Plus mobile APP from the Apple Store or Google Play

2



Login ID  
Password  
Login  
Language: English  
Area: Asia and Oceania

Open the Aibeile Plus app and follow the instructions below:

- Enter the 'Login ID' and 'Password' which are detailed on the 'Settings and Login Information sheet' provided (**PLEASE DO NOT** use your own email address to login)
- Ensure that 'Asia and Oceania' is selected in the 'Area' field
- Press 'Login', you will automatically be redirected to the homepage which is a map showing the devices location

#### NOTE

- Aibeile Plus is designed for the emergency contacts to monitor and change device settings, the wearer is **NOT** required to download Aibeile Plus to operate the MMPSM.

# USER GUIDE - MindMe Pro SM

## Starter Guide

### Mobile APP home screen overview

Below is an overview of some commonly used Aibeile Plus features and settings to assist in managing the MMPSM

#### NOTE

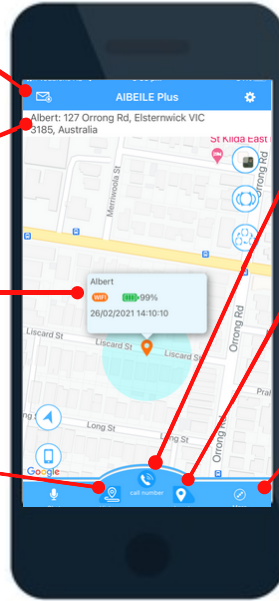
- To change any settings or features, the MMPSM will need to be turned on

**Envelop icon:** Press this icon to view a list of previous alerts that have been activated by the MMPSM. Alert type, time and date will appear.

**Address bar:** Displays the address where the last location registered for the MMPSM. The location feature will automatically update every 10 mins and when there is continuous movement of the device.

**Locator dialogue box:** A box showing the MMPSM location will appear. It details the MMPSM current battery level, the time and date that the MMPSM last updated, and the method used to locate the device either WIFI or GPS.

**History:** Press the icon track the travel history of the watch.



**Call number:** Press the icon to make standard phone call to the MMPSM. Once answered, a 2 way conversation can take place between the caller and wearer.

**Locate:** Press the icon to update the current location of MMPSM. The location may take up to 30 secs to update. **TIP:** Press the locate icon to get the real time GPS location on the MMPSM.

**More:** Press the icon to access features including:

- Settings:** Allows various settings/features to be programmed including SOS #'s, fall detection & phone book
- GEO fence:** Displays a pre-programmed GEO fence or add a GEO fence
- Medicine notifications:** Displays a pre-programmed or set up of medication reminders

### Changing Emergency Contact #'s

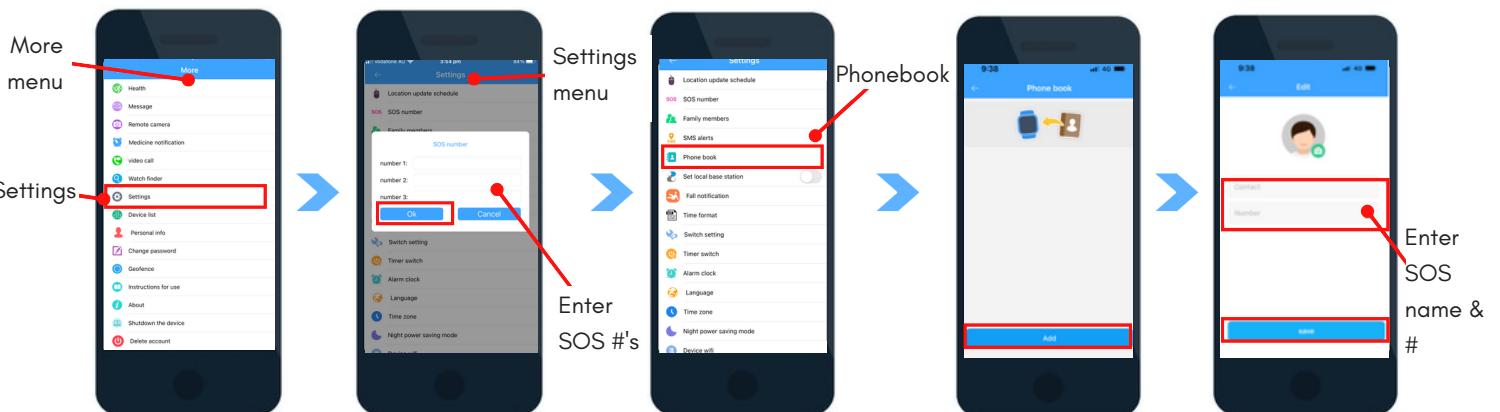
1

2

3

4

5



Select the 'More' icon from the homepage, then select 'Settings' from the list of options

From the 'Settings' menu, select the 'SOS number' option. A pop up box will appear, add or remove emergency contact #'s as required and press 'Ok'. A grey pop up box displaying 'Set Ok' will appear if the changes have been successful.

Return to 'Settings' menu, select 'Phonebook'

Press 'Add' icon at the bottom of the screen

Enter in the name and contact # of the emergency contact, click 'Save'.

#### Note:

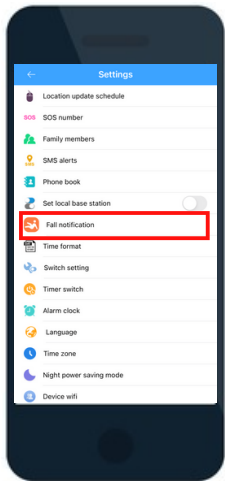
- Repeat this process for each of the emergency contacts.

# USER GUIDE - MindMe Pro SM

## Starter Guide

### Changing fall sensitivity

1

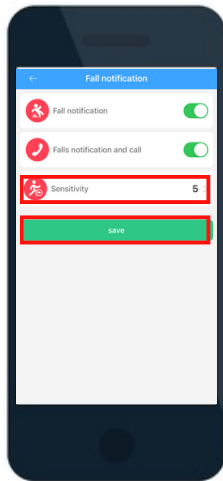


From the 'Settings' menu, select the 'fall notification' option.

#### NOTE

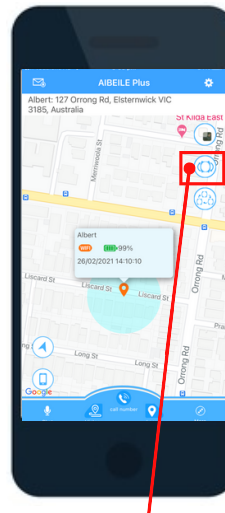
To deactivate the fall detection feature. Press the green toggles ('fall notification' & 'fall notification and call'). The toggles will turn to a neutral colour. Then press 'Save'

2



Select the 'Sensitivity' option. Then select the desired sensitivity from the drop down box (1 = most, 10 = least sensitive, level 6 is recommended), press 'Ok' and 'Save'. A grey pop up box displaying 'Set Ok' will appear if the changes have been successful.

### Multiple MindMe devices per Aibeile Plus Account



To switch between 2 or more devices, press icon on top right hand side. A selection box with the names of the device wearers will appear. Select the name of the wearer's device that you would like to view

#### NOTE

Wearers that have the same emergency contacts, will be linked to the mobile APP via the same login/account.