

# QUICK USER GUIDE - MindMe Watch X

## Starter Guide

### MindMe Watch X Overview

The MindMe Watch X (MMWX) combines a mobile phone, watch, a GPS device, and GPRS satellite technologies to assist in tracking and monitoring vulnerable individuals in one easy to use solution



### Turning ON/OFF

#### Turn On

1

Press and hold down the On button



On button



2

The display screen will turn on. The current time (digital), day & date will appear on the display screen



#### NOTE

- The MMWX may take up to 30 secs to boot up

#### Turn Off

1

Quickly press the side button. The watch face will appear



On button



2

- Using the stylus provided, scroll from right to left through the menu options until you reach 'MORE'.
- Press 'MORE', then Select 'SETTINGS'
- Scroll down to 'SHUTDOWN' and press 'Ok'



Stylus

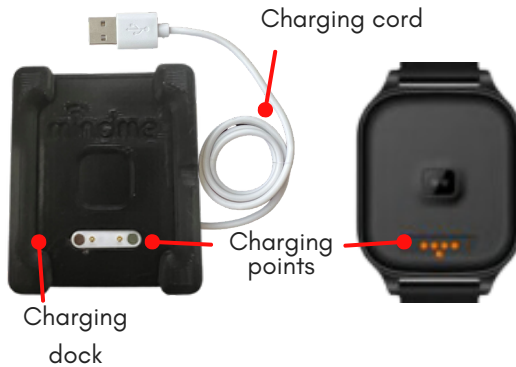
Swiping direction

# QUICK USER GUIDE - MindMe Watch X

## Starter Guide

### Charging

Match the charging points on the back of the MMWX with the charging head on the docking station. A magnetic pull will secure the MMWX to the docking station



#### NOTE

- Before using your MMWX, please charge the watch for 2-3 hours.
- After charged to 100% the battery will last up to 24 hours.
- When the battery charge falls below 20% the MMWX will SMS an alert to the primary number on your MMWX.



It is a good idea to charge the MMWX next to the wearer's bed. That way when the wearer goes to bed the MMWX can be placed on the charging dock and be fully charged, ready to go when the wearer gets up in the morning. This method also helps in create a routine for the wearer as well as the carer.

### Charging Tips

Refer to the charging tips provided below if your device is not establishing a proper connection with the charger:

#### Cleaning Charging Points



Regularly use a clean, lint-free cloth to wipe the charging points to prevent the accumulation of grime

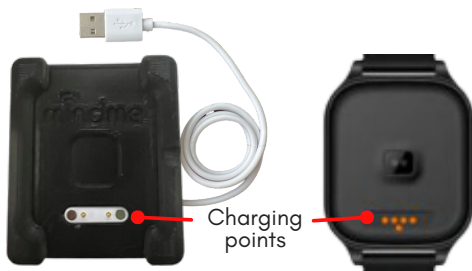
#### Charging Dock



Place the charging dock in a facedown position and press the back of the charging head down to ensure that the gold dots on the front are elevated above the surface of the charging dock

### Using the MMWX for the first time

1



Place device in the charger (ensure the charging points on MMWX and base match up, you will feel a magnetic pull). Charge for 2 - 3 hours

2



To turn on the MMPSM, press and hold down the On & SOS button for 5 secs. The digital screen will turn on, displaying time and date. The MMWX is operational

# QUICK USER GUIDE - MindMe Watch X

## Starter Guide

### Testing the MMWX

We strongly recommend conducting a thorough test of your MMWX before use to ensure that both the wearer and designated SOS contacts are familiar with the device's operation in real-life scenarios. Additionally, it is recommended to perform periodic tests of the MMWX to ensure its proper functionality.

To carry out testing the MMWX follow the instructions outlined in the following 'Emergency Procedure' section of the User Guide

#### NOTE

Before conducting tests, inform the assigned SOS contacts that you will be testing the MMWX, as they will receive a phone call from your MMWX.

## Using the MindMe Watch X

### Emergency Procedure



1 Press and hold SOS button for 5 - 10 seconds. The digital screen will change and an audible ring tone will sound. This initiates the emergency procedure

2 An alert SMS is sent to the primary emergency contact (including the date, time, google maps location of the MMWX). Also, an alert with the same information is sent to the Aibeili Plus APP

3 Call cycle begins. First SOS contact # is called. If call is unanswered within 12 sec, the call moves to the next SOS contact # in sequence of order

#### NOTE

- Emergency contacts can be either mobiles and landlines. Only the primary number with a mobile phone will receive an SMS with the alerts and a Google Maps link.
- To cancel SOS alert, press 'RED' 'Cancel' button that appears on watch face. The red 'Cancel' button will appear on the screen once the SOS button has been pressed. Alternatively, press the side button for 1 sec

### Fall Detection Procedure



1 The wearer falls on a hard surface, the MMWX registers a fall, the digital screen will change to show a fall has been detected

2 An alert SMS is sent to the primary emergency contact (including the date, time, google maps location of the MMWX). Also, an alert with the same information is sent to the Aibeili Plus APP

3 Call cycle begins. First SOS contact # is called. If call is unanswered within 12 sec, the call moves to the next SOS contact # in sequence of order

#### NOTE

- If a false alert is detected, the wearer can cancel the alert within 10 secs by pressing the RED 'Cancel' button on the watch face. Alternatively, press the side button for 1 sec
- For the MMWX to register a fall it needs to fall from a height of 1 meter at a 45 degree angle and end with a sudden hard impact
- The MMWX may not detect a fall if the wearer falls on a soft surface i.e a bed or couch
- If in doubt that the fall alert has been activated, press the side button for 5 - 10 secs

# QUICK USER GUIDE - MindMe Watch X

## Starter Guide

### GEO Fencing Procedure

1



Wearer breaches the pre-set GEO fence virtual perimeter (either out or in of the perimeter)

2



Sends a notification alert to the mobile APP Aibeili Plus confirming when and where the wearer has breached the virtual perimeter (either out or in of the perimeter)

#### NOTE

- The GEO fence perimeter can be set at a minimum of 100m from the point location. i.e. 100m from front gate of house
- If the GEO fencing feature has been requested upon purchase, please contact MindMe on 1300 776 907 to assist with initial setup.

### Getting a GPS reading



Prior to using your device, the MMWX will need to get an initial satellite fix for GPS location. Turn on the MMWX and either take the MMWX outdoors or place it near a window so the MMWX can see the clear sky and get a fix on the overhead satellites. This could take up to 10 minutes.

#### NOTE

This process must be completed every time the MMWX is turned ON or if the device has been reset to get an accurate GPS location.

### MMWX Mobile APP

### Downloading & Log into MMWX Mobile APP

To monitor and edit the settings on the MMWX, you will need to download and log into the mobile APP (AIBEILE Plus). Your username and login details are detailed on the 'Settings and Login Information' sheet provided.

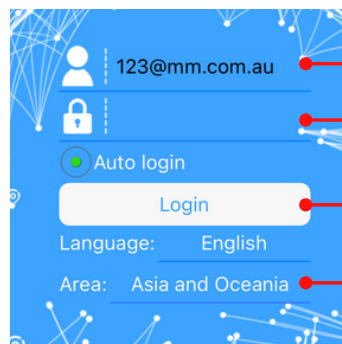
1



AIBEILE Plus  
Lifestyle

Download the Aibeile Plus mobile APP from the Apple Store or Google Play

2



Open the Aibeile Plus app and follow the instructions below:

- Enter the 'Login ID' and 'Password' which are detailed on the 'Settings and Login Information' provided (**PLEASE DO NOT** use your own email address to login)
- Ensure that 'Asia and Oceania' is selected in the 'Area' section
- Check the 'User Agreement & Privacy' policy box
- Press 'Login', you will automatically be redirected to the homepage which is a map of the devices location

#### NOTE

- Aibeile Plus is designed for the emergency contacts to monitor and change device settings, the wearer is **NOT** required to download Aibeile Plus to operate the MMWX.

# QUICK USER GUIDE - MindMe Watch X

## Starter Guide

### Mobile APP home screen overview

Below is an overview of some commonly used Aibeile Plus features and settings to assist in managing the MMWX

#### NOTE

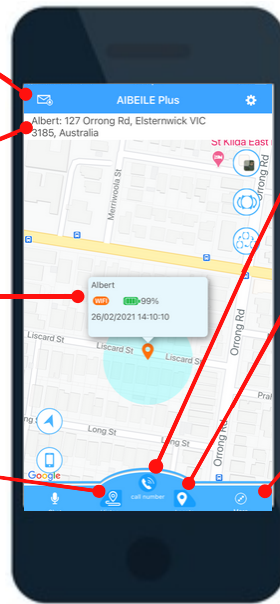
- To change any settings or features, the MMWX will need to be turned on

**Envelop icon:** Press this icon to view a list of previous alerts that have been activated by the MMWX. Alert type, time and date will be displayed.

**Address bar:** Displays the address of the last location registered for the MMWX. The location feature will automatically update every 10 mins when there is continuous movement of the device.

**Locator dialogue box:** A popup box showing the MMWX location will appear. It details the MMWX current battery level, the time and date that the MMWX last updated, and the method used to locate the device either WIFI or GPS.

**History:** Press the icon track the travel history of the watch.



**Call number:** Press the icon to make standard phone call to the MMWX. After 2 rings the MMWX will automatically answer and a 2 way conversation can take place between the caller and wearer.

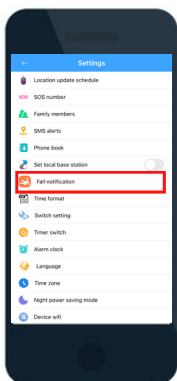
**Locate:** Press the icon at any time to update the current location of MMPSM. The location may take up to 30 secs to update. **TIP:** Press the locate icon to get the real time GPS location on the MMWX.

**More:** Press the icon to access features including:

- Settings:** Allows various settings/features to be programmed including SOS #'s, fall detection & phone book
- GEO fence:** Displays a pre-programmed GEO fence or add a GEO fence
- Medicine notifications:** Displays a pre-programmed or set up of medication reminders

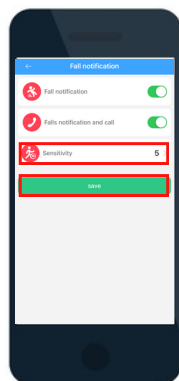
### Changing fall sensitivity

1



From the 'Settings' menu, select the 'fall notification' option.

2



Select the 'Sensitivity' option. Then select the desired sensitivity from the drop down box (1 = most, 10 = least sensitive, level 4 is recommended), press 'Ok' and 'Save'. A pop up box displaying 'Set Ok' will appear if the changes have been successful.

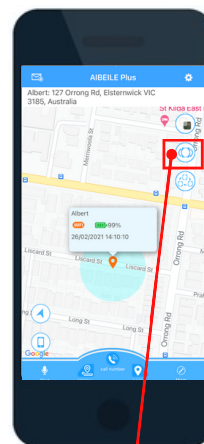
#### NOTE

To deactivate the fall detection feature. Press the green toggles ('fall notification' & 'fall notification and call'). The toggles will turn to a neutral colour. Then press 'Save'

### Multiple MindMe devices per Aibeile Plus Account

#### NOTE

Wearers that have the same emergency contacts, will be linked to Aibeili APP via the same login/account.

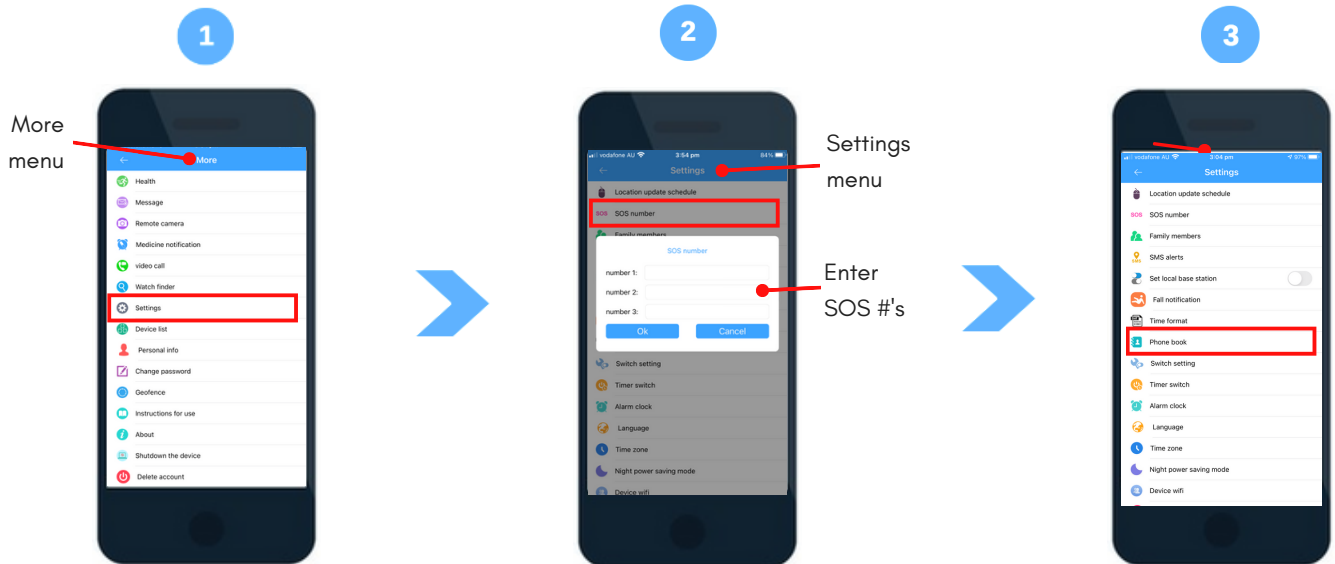


To switch between 2 or more devices, press icon on top right hand side. A selection box with the names of the device wearers will appear. Select the name of the wearer's device that you would like to view

# QUICK USER GUIDE - MindMe Watch X

## Starter Guide

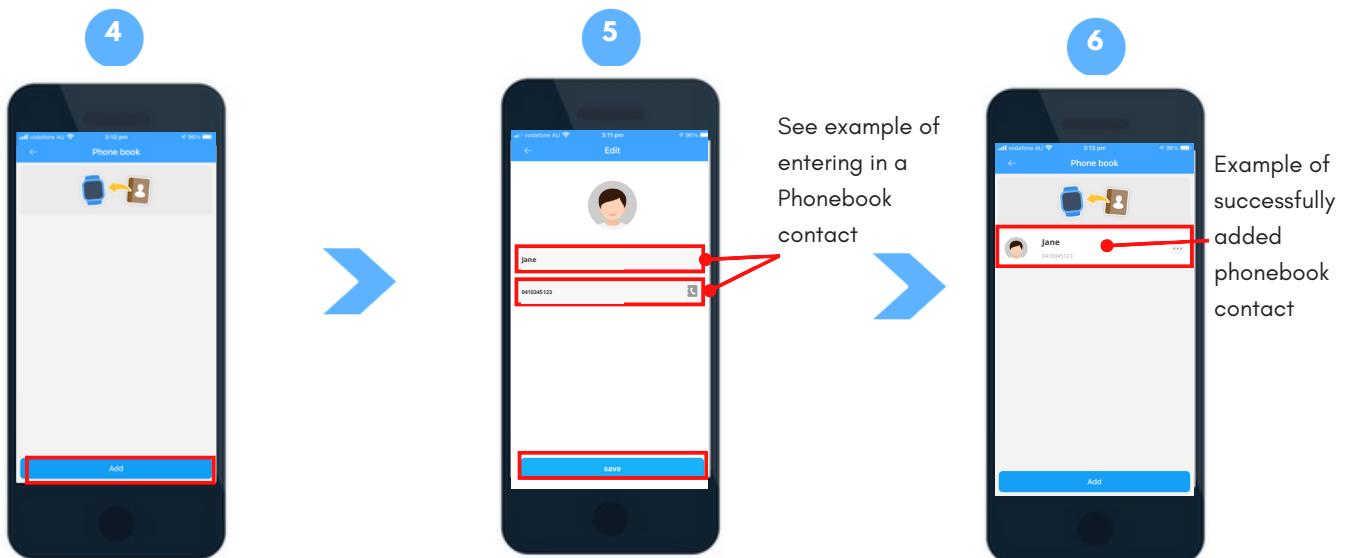
### Changing Emergency Contact #'s



Select the 'More' icon from the homepage, then select 'Settings' from the options list.

From the 'Settings' menu, select the 'SOS number' option. A pop up box will appear, add or remove emergency contact #'s as required and select 'Ok'. A grey pop up box displaying 'Set Ok' will appear if the changes have been successfully updated

The SOS contact #'s also need to be added to the 'Phonebook' section. From the 'Settings' menu, click 'Phonebook'.  
**Please note:** Contact #'s listed in the 'Phonebook' will be able to call into the device, however only the contact #'s listed in the SOS contacts will receive emergency communication.



From the bottom of the screen Select 'Add'.  
**PLEASE NOTE:** Contact names and phone numbers may already be listed in the phonebook from previous programming.

Enter the SOS contact name and contact # (See above example), then click 'Add'.

If correctly programmed, the SOS contact will appear in the list of Phonebook contacts. This means the contact has been successfully added..