

# WEB STRAP RATCHET WINCH HOISTS

MADE IN THE USA **SINCE 1949.**



# LUG-ALL®

RAISE YOUR EXPECTATIONS

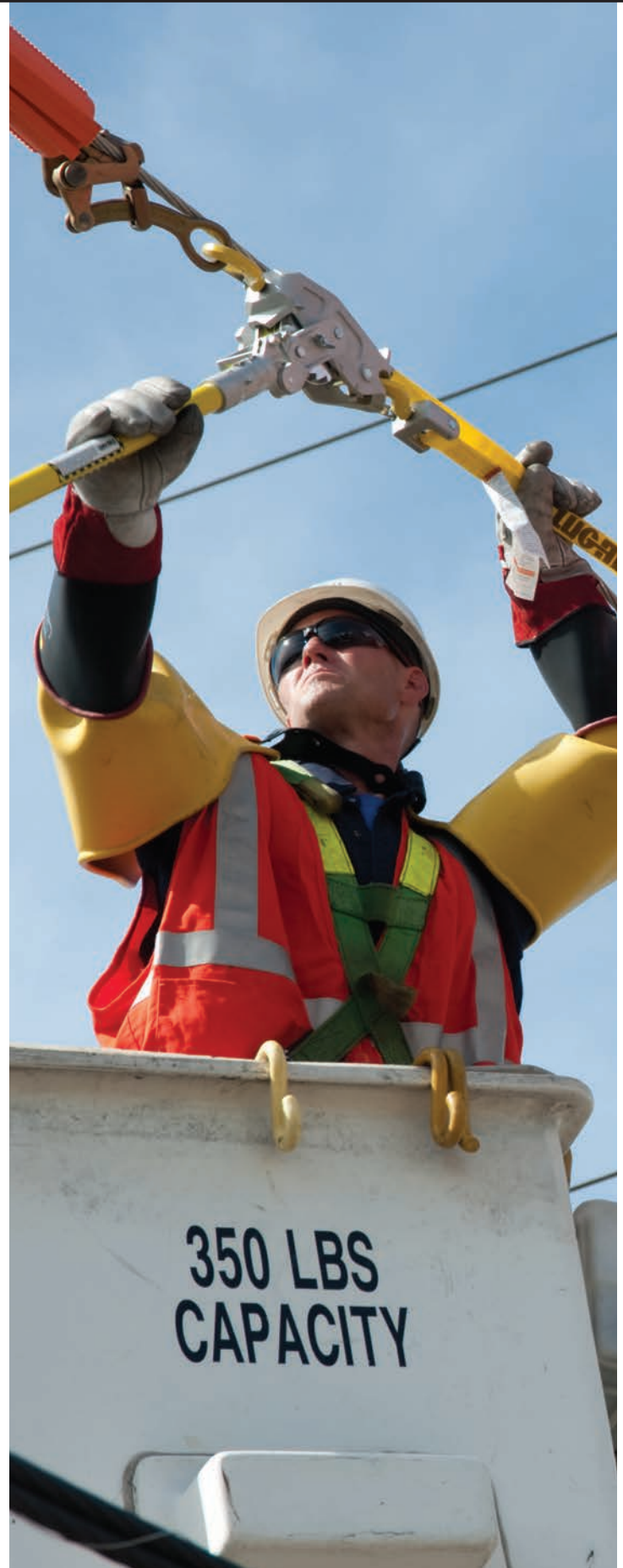
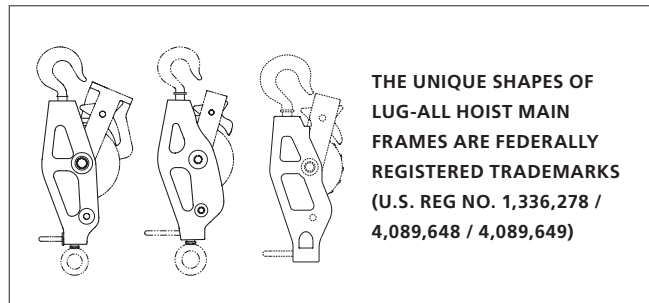
### LUG-ALL HOISTS ARE TRUSTED AROUND THE WORLD TO GET THE JOB DONE QUICKLY AND SAFELY.

Since the 1960's, Lug-All has been the world's leading manufacturer of web strap ratchet winch hoists. With quality and reliability built into every web strap hoist, the Lug-All name is unmatched by the competition.

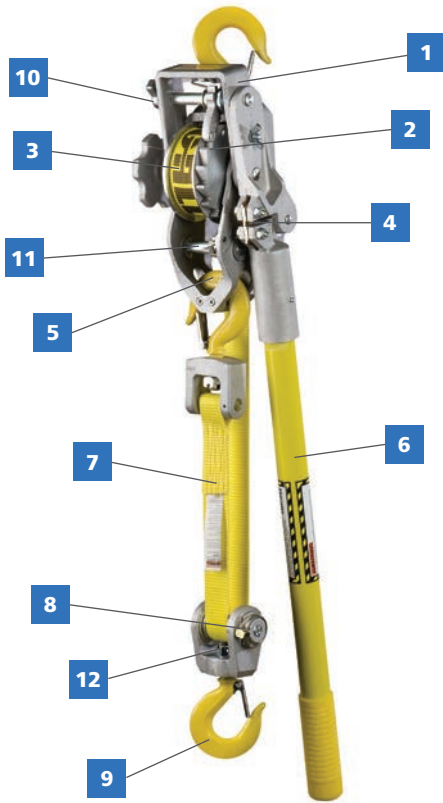
Lug-All web strap hoists are instantly recognized by the distinctive shape of their cast aluminum frames which is a proprietary trade-marked shape. Lug-All web strap hoists are made with high strength aluminum alloy castings and are manufactured in the United States. Our U.S. based manufacturing means Lug-All has the capability to constantly improve the usability of our products.

### TABLE OF CONTENTS

LUG-ALL WEB STRAP HOIST ADVANTAGES .....	3
STRESS LINK/OVERLOAD LINK .....	3
SMALL FRAME LIGHTWEIGHT HOISTS .....	4
SMALL FRAME HOISTS .....	5
MEDIUM FRAME LIGHTWEIGHT HOISTS .....	6
MEDIUM FRAME HOISTS .....	7
WEB STRAP HOIST OPTIONS .....	8-10
PRODUCTION PROCESSES .....	11
REPAIRS .....	11
HOW TO BUY .....	11
WARRANTY & WARNINGS .....	BACK COVER



## PRECISION ENGINEERING IS AT THE HEART OF EVERY LUG-ALL WINCH HOIST



### LUG-ALL® WEB STRAP HOIST FEATURES

1. USA-made, cast aluminum frames provide superior durability.
2. Interlocking pawl system ensures the load is always secure.
3. Web strap is stored on a double flanged drum.
4. Replaceable stress link gives warning of overload conditions.
5. Open construction allows easy daily visual inspection
6. Reversible Fiberglass Handle (Custom Lengths Available)
7. Polyester web strap guards against electrical conductivity.
8. STANDARD quick release pulley block is double reeved for full capacity (standard on all models).
9. High-strength forged steel hooks are standard on all models.
10. Our U-frame design secures the U-frame components with a roll pin to endure significantly greater impact forces than the previous C-clip design.
11. Our main frame pawl and spring design allows the 90-degree leg on the main frame spring to be inserted into a small hole in the main frame pawl. This design prevents the possibility of the main frame spring becoming dislodged from impact.
12. All hex nut connections are now welded to the shank hooks, eye bolts, and hex bolts for even stronger connections than before.

### DESIGNED FOR RELIABLE OPERATION

All hoists meet ANSI B30.21 standards and have been tested to 125% of the rated load.

Forged hooks with latches provide secure connections for any load.

Double flanged drum prevents the web strap from coming in contact with the ratchet teeth to protect the web strap from pinching, tearing, and excessive wear.

Trademarked main frame designs allow easy access to internal components for inspections, maintenance, and repair.

### POSITIVE LOAD HOLDING IN ALL ENVIRONMENTS

The double interlocking pawl mechanism guarantees that at least one pawl is actively engaged at all times. There is no load brake that can slip or fail, so the load is always secure.

### LUG-ALL'S BREAKABLE STRESS LINK

Lug-All web strap hoists feature our exclusive breakable stress link. The stress link, next to the overload link, snaps when the hoist is overloaded, warning the operator to back off the load before injury or damage. The overload link has elongated holes which allows enough movement for the stress link to snap, while still holding the handle socket assembly together. The stress link must then be replaced immediately.



### SMALL FRAME LIGHTWEIGHT

Our Lightweight Line of winch hoists utilize our small frame design to create light, compact hoists for everyday use. These hoists are ideal for recreational applications, such as driving snowmobiles, ATVs, Jeeps, and other off-road vehicles. They can be used to rescue stuck vehicles, clear obstacles from a trail, set overturned vehicles upright, and more. Their small size and low weight make them easy to fit in small storage compartments so you never have to go off-road without them.

### 1/4 TON SMALL FRAME



Model 500-A

### 1/4 TON SMALL FRAME



Model 500-i

MODEL NUMBER	CAPACITY	SINGLE PULL DISTANCE		HOOK STYLE	STRAP LENGTH	HANDLE LENGTH	NET WEIGHT (LBS.)
		Min	Max				
500-A	1/4 Ton	14-1/2"	16'	Standard Latching Hooks	17'	15"	6.75
500-i	1/4 Ton	14-1/2"	16'	Eye Bolt Hooks	17'	15"	6.5

NOTE: See pages 8-10 for additional hoist options.

### HOISTS THAT WORK HARD NO MATTER THE JOB



Clear Obstacles



Free Stuck Vehicles



Store in Small Spaces

**1 TON  
SMALL FRAME**

**1-1/2 TON  
SMALL FRAME**

**1-1/2 TON  
EYE-BOLT  
SMALL FRAME**

**SMALL FRAME**



**Model 2-A**



**Model 25-A**



**Model 25-iHB**

Our small frame web strap hoists are lightweight and compact. With their one-hand portability, you can easily work in almost any position. Plus, their compact size gives you more elbow room around live wires. Perfect for tight spots, these pullers have all the functionality of larger, heavier hoists in a small package.



The eye-bolt makes the set-up for double-line pulls easier and faster!

MODEL NUMBER	DOUBLE LINE CAPACITY	DOUBLE PULL DISTANCE		SINGLE LINE CAPACITY	SINGLE PULL DISTANCE		STRAP LENGTH	HANDLE LENGTH	NET WEIGHT (LBS.)
		Min	Max		Min	Max			
2-A	1 Ton	21"	4'-5"	1/2 Ton	16"	9'-6"	10'	30"	10.25
2-B	1 Ton	21"	4'-5"	1/2 Ton	16"	9'-6"	10'	32"	10.5
2-U	1 Ton	24"	4'-4"	1/2 Ton	18"	9'-6"	10'	30"	10.75
2-UB	1 Ton	24"	4'-4"	1/2 Ton	18"	9'-6"	10'	32"	11
2-HB	1 Ton	24"	4'-4"	1/2 Ton	18"	9'-6"	10'	32"	11
25-A	1-1/2 Ton	21"	3'-5"	3/4 Ton	16"	7'-6"	8'	20"	10
25-B	1-1/2 Ton	21"	3'-5"	3/4 Ton	16"	7'-6"	8'	22"	10.5
25-U	1-1/2 Ton	24"	3'-4"	3/4 Ton	18"	7'-6"	8'	20"	10.5
25-UB	1-1/2 Ton	24"	3'-4"	3/4 Ton	18"	7'-6"	8'	22"	10.75
25-HB	1-1/2 Ton	24"	3'-4"	3/4 Ton	18"	7'-6"	8'	22"	11

NOTE: See pages 8-10 for additional hoist options.

### MEDIUM FRAME LIGHTWEIGHT

We know that in the field, you want light, compact, and strong tools for pulling electrical lines efficiently. That's why we designed our 1-1/2 Ton and 2 Ton lightweight web strap hoists to be the lightest, most compact models ever. These lightweight hoists are easier to carry and maneuver while working at the top of electrical poles.

Models 35 (1-1/2 ton) and 40 (2 ton) are available as both convertible or standard hoists. Like all Lug-All hoists built for linemen, these models meet rigorous ANSI/ASME B30.21 Standards.

### 1-1/2 TON MEDIUM FRAME



**Model 35-A**

### 2 TON MEDIUM FRAME



**Model 40-A**

MODEL NUMBER	DOUBLE LINE CAPACITY	DOUBLE PULL DISTANCE		SINGLE LINE CAPACITY	SINGLE PULL DISTANCE		STRAP LENGTH	HANDLE LENGTH	NET WEIGHT (LBS.)
		Min	Max		Min	Max			
35-A	1-1/2 Ton	27"	7'-2"	3/4 Ton	19"	15'-4"	16'	30"	12.75
35-B	1-1/2 Ton	27"	7'-2"	3/4 Ton	19"	15'-4"	16'	32"	13
35-U	1-1/2 Ton	30"	7'-1"	3/4 Ton	21"	15'-4"	16'	30"	13.25
35-UB	1-1/2 Ton	30"	7'-1"	3/4 Ton	21"	15'-4"	16'	32"	13.25
35-HB	1-1/2 Ton	29"	7'-1"	3/4 Ton	20"	15'-4"	16'	32"	13.25
40-A	2 Ton	25"	4'-1"	1 Ton	19"	9'-4"	10'	36"	13.25
40-B	2 Ton	25"	4'-1"	1 Ton	19"	9'-4"	10'	38"	13.5
40-U	2 Ton	29"	4'-0"	1 Ton	21"	9'-4"	10'	36"	13.75
40-UB	2 Ton	29"	4'-0"	1 Ton	21"	9'-4"	10'	38"	13.75
40-HB	2 Ton	27"	4'-0"	1 Ton	20"	9'-4"	10'	38"	13.75

**NOTE:** See pages 8-10 for additional hoist options.

**1-1/2 TON  
MEDIUM FRAME**



**Model 3-A**

**2 TON  
MEDIUM FRAME**



**Model 4-A**

**MEDIUM FRAME**

Our medium frame web strap ratchet winch hoists provide you with extra pulling strength for capacities from 1-1/2 to 2 tons. These medium frame Lug-All winch hoists deliver excellent lifting and pulling power in a simple, easy to use design. Like all Lug-All web strap pullers, these precision tools are beautifully crafted to deliver easy, trouble-free pulling of energized power lines.



MODEL NUMBER	DOUBLE LINE CAPACITY	DOUBLE PULL DISTANCE		SINGLE LINE CAPACITY	SINGLE PULL DISTANCE		STRAP LENGTH	HANDLE LENGTH	NET WEIGHT (LBS.)
		Min	Max		Min	Max			
3-A	1-1/2 Ton	27"	6'-2"	3/4 Ton	19"	13'-2"	14'	30"	14
3-B	1-1/2 Ton	27"	6'-2"	3/4 Ton	19"	13'-2"	14'	32"	14.5
3-U	1-1/2 Ton	30"	6'-2"	3/4 Ton	21"	13'-2"	14'	30"	15
3-UB	1-1/2 Ton	30"	6'-2"	3/4 Ton	21"	13'-2"	14'	32"	15
3-HB	1-1/2 Ton	29"	6'-2"	3/4 Ton	20"	13'-2"	14'	32"	15.25
4-A	2 Ton	27"	4'-1"	1 Ton	19"	9'-4"	10'	36"	15.5
4-B	2 Ton	27"	4'-1"	1 Ton	19"	9'-4"	10'	38"	16
4-U	2 Ton	31"	4'-0"	1 Ton	21"	9'-4"	10'	36"	16
4-UB	2 Ton	31"	4'-0"	1 Ton	21"	9'-4"	10'	38"	16.5
4-HB	2 Ton	29"	4'-0"	1 Ton	20"	9'-4"	10'	38"	16.25

**NOTE:** See pages 8-10 for additional hoist options.

### WEB STRAP HOIST OPTIONS

All Lug-All Web Strap winch hoists can be customized with a variety of optional features. You can choose which features to include with your winch hoist to achieve the best possible setup for your specific applications.

#### CONVERTIBLE CONVERSION KITS

Our web strap hoist conversion kits allow you to change quickly from a single line to a double line rigged capacity without the worry of misplaced parts; all the parts to switch line configurations are on the hoist. With the standard version, double line rigging is set up by hooking the web-end assembly to the hoist main frame through the frame body or the eye-bolt.

With the conversion kit, double line rigging is set up with a bracket that attaches the web end directly to the main frame. The conversion kit eliminates the additional space occupied by the web-end hook assembly and the main frame eye bolt. Web strap hoists with the conversion kit achieve a shorter minimum pull distance as well as a greater maximum pull distance. With Lug-All's durable, lightweight frame construction, these convertible web strap pullers start at just 9.5 lbs.

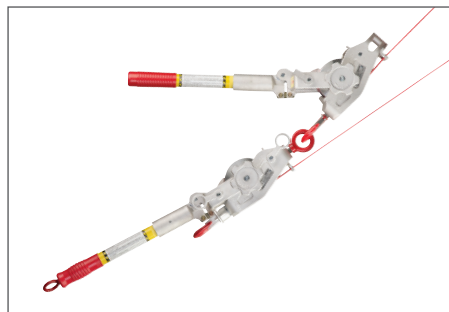
#### LIGHTER WEIGHT AND MORE HEADROOM ON SMALL AND MEDIUM FRAME CONVERTIBLE MODELS

Conversion kits are available for Lug-All small frame models 2-A and 25-A, and medium frame models 3-A, 4-A, 35-A, and 40-A, as well as all U, B, UB, and HB model variations.



#### MAIN FRAME EYE BOLT

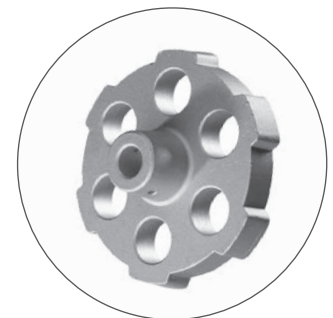
All small frame models can include the main frame eye bolt option. The eyebolt makes it easier for users to hook the web end to the hoist's main frame, especially when using a hot stick. A hoist with the main frame eye bolt, like the 25-i, can hook to itself quickly for setting up a double-line arrangement, piggybacking multiple winch hoists, and even storing.



The main frame eye bolt makes piggybacking a snap

#### WIND-UP WHEEL

All Lug-All Web Strap Hoists are available with a wind-up wheel. The wind-up wheel allows you to take up slack quickly without using the ratchet function. Wind-up wheels are available in two sizes for both small frame and medium frame models.

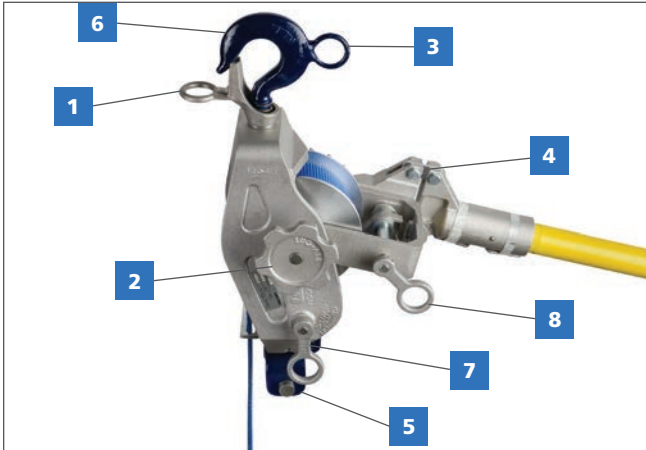


Large wind-up wheel available for small frame and medium frame models



## HOT STICK RINGS

Hot stick rings allow linemen to operate equipment on live electrical lines while using a hot stick. At Lug-All, safety is a top priority, so we provide optional hot stick rings for our web strap hoists. All Lug-All 1 Ton, 1-1/2 Ton, and 2 Ton Web Strap Ratchet Winch Hoists can be customized to include hot stick rings for use in live-line operations. Hot stick rings can be added in some or all available locations, depending on your needs.



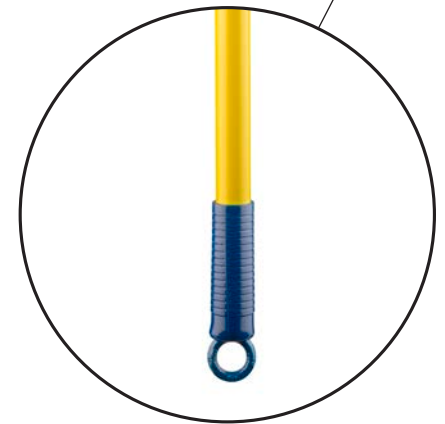
1. Optional Hot Stick Hook Latch
2. Wind Up Wheel (Two Sizes Available)
3. Optional Hot Stick Ring
4. Stress Link
5. Optional Conversion Kit for Double Line Rigging
6. Drop Forged Hooks Available in Seven Styles
7. Optional Pawl Lever for Fast Operation
8. Optional Hot Stick Operating Lever



Hot stick rings on the Main Frame Pawl and the U-Frame Pawl levers



The B, UB, and HB hook options include hot stick rings. The HB hook option (pictured) includes hot stick rings on both the hook and the latch.



Fiberglass handle with hot stick ring

A



U



B



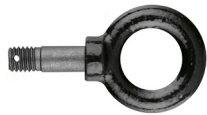
UB



HB



EB



SLH



### WEB STRAP HOIST OPTIONS

#### THE RIGHT HOOK FOR ANY APPLICATION

##### (A) - Standard Latching Shank Hook

Forged alloy steel hooks for lasting strength and durability. Latches are standard.

##### (U) - Swivel Gate Hook

Hook latch revolves on hook shank and locks under spring tension in open or closed position.

##### (B) - Hot Stick Ring with Standard Latching Hook

Hot stick hooks have a welded 1-inch diameter ring and standard latches for use with approved hot stick tools.

##### (UB) - Swivel Gate Hook with Hot Stick Ring

Offers the same revolving and locking hook shank features as our standard swivel gate, but incorporates a 1-inch diameter welded hot stick ring.

##### (HB) - Hot Stick Ring with Hot Stick Hook Latch

Hot stick hook latch models have rings on the hook and latch for use on energized lines. Using holding sticks, the latch and hook can be easily maneuvered.

##### (EB) - Eye Bolt

Use an eye bolt to secure a connection directly to the hoist.

##### (SLH) - Self Locking Hook

The hook is held closed with a spring-loaded lever.

### CUSTOM HANDLE LENGTHS

Lug-All web strap winch hoists are available with different handle lengths to suit any job. Longer handles can be used to achieve greater leverage for heavy loads, and shorter handles can be used to make hoists more compact for work in smaller spaces. All customizable web strap hoist handles are made of fiberglass to reduce conductivity.

### MISCELLANEOUS OPTIONS

- Non-removable pulley blocks
- Shorter custom web strap lengths
- Optional levers on the U-frame and main frame pawl for faster operation
- Removable web end
- Lever options on drum shaft to replace wind-up wheel
- Captive wing-nut on handle
- Thumb screw for removable handle



23-inch 1 Ton handle



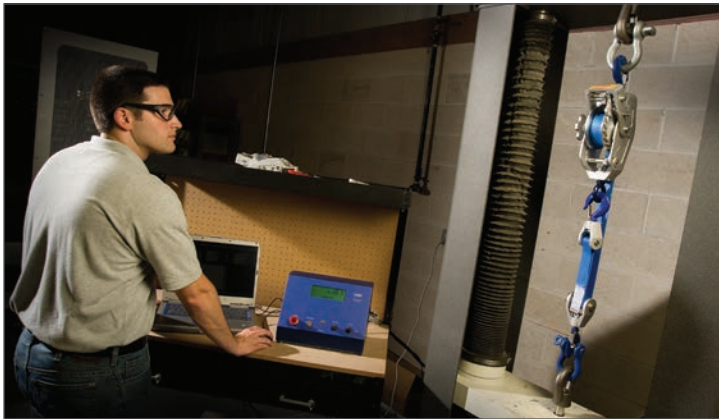
13-inch 1-1/2 Ton handle



28-inch 2 Ton handle

## HIGH-QUALITY PRODUCTION PROCESSES

When you purchase a Lug-All hoist, you can be confident that you are purchasing a quality product. For over 70 years, Lug-All has been developing and refining superior production processes for our lever ratchet winch-hoists. Here at Lug-All we are dedicated to working with customers in the field and making innovative changes based on their feedback. Our products have held their ground as the easiest to use and most durable lever ratchet hoists on the market.



## QUALITY CONTROL

Lug-All hoists must pass rigorous testing before being distributed. A Universal Testing Machine is used to test peak load capacity and web strap stretching. It has accuracy that measures to within a tenth of a pound for capacity. A Cyclical Testing Machine is used to conduct CE testing at 110% of rated capacity for the certification of Lug-All hoists in European markets. Lug-All is also ISO 9001-2015 certified, so you can be sure that Lug-All's quality control procedures and customer service are monitored and updated regularly.

## LUG-ALL REPAIR SERVICES

Many of the parts on our Lug-All Come Along Ratchet Winch Hoists are replaceable. Because parts can be replaced, you can save yourself the cost of purchasing a brand-new hoist and also prolong the life of your Lug-All.

Many of the parts on a Lug-All winch hoist are available for purchase online, and you can use them to replace worn out or broken components at home. However, if a winch hoist is damaged substantially, it may require professional repair.

We offer comprehensive repair services for all of our manual come along ratchet winch hoists. If your Lug-All hoist becomes severely damaged, you can send it back to the factory where we can pinpoint the problem and return the hoist to its original condition. Having your hoist repaired by Lug-All professionals can save you money and prolong the life of your hoist. Visit our Contact Us page online, email us at [sales@Lug-All.com](mailto:sales@Lug-All.com), or call us at 877-658-4255 to inquire about our repair services.

## HOW TO BUY

**Our number one priority is to provide superior and reliable come along ratchet winch hoists with quality services that you can depend on. Visit our online store at [Lug-All.com](http://Lug-All.com) to buy both hoists and parts.**

**Looking to place a large order or become a distributor? Visit the [Locate A Sales Rep](http://Locate A Sales Rep) webpage on [Lug-All.com](http://Lug-All.com).**

**You can also call us toll-free at 877-658-4255, submit a contact form on our [Contact Us](http://Contact Us) webpage, or email us at [sales@lug-all.com](mailto:sales@lug-all.com).**



## RAISE YOUR EXPECTATIONS

We do one thing: Make industrial manual come along hoists.

We design and build premium hoists used in critical industrial jobs, like lifting expensive pumps or pulling energized power lines (using our line of Web Strap Hoists).

Customers come to our hoists with very high expectations. They're willing to pay for proven safety, reliability, and durability.

Lug-All® customers are looking for a level of functionality unknown in other hoists. As fellow craftsmen, we're honored to serve this elite group.



## WARRANTIES, PARTS & REPAIRS

We guarantee that your Lug-All hoist is free from defects in material and workmanship for one year from your date of purchase.

**LUG-ALL®**  
WEB STRAP RATCHET WINCH HOISTS

For inquires, call us at:  
877-658-4255 toll free

650 Lincoln Road  
Birdsboro, PA 19508

Local: 610-286-9884  
Fax: 610-286-9661  
Web: lug-all.com  
Email: sales@lug-all.com



Lug-All web strap hoists are **NOT** insulating live-line tools. When the hoist's strap is clean and dry, it may have dielectric properties typical of nylon or polyester fibers; however, when it becomes wet and/or dirty, the strap loses these dielectric properties.

Use appropriate insulating hot sticks in series with web strap hoist hot-stick rings when necessary to achieve proper working distance per OSHA Regulation Subpart V, 1926.950 or company work practices. When the hoist handle swings closer to an energized conductor than OSHA working distances or company work practices permit, use rubber gloves rated for appropriate voltage.

## TO AVOID PERSONAL INJURY OR EQUIPMENT DAMAGE

- Do not use if web strap is twisted, kinked, frayed, or damaged.
- Do not use to lift people, or loads over people.
- Do not leave an unattended load suspended in the air.
- Do not lengthen, or make any substitution for the Lug-All reversible handle.
- Do not remove or obscure warning labels.
- Do not use hoist as a load binder.
- Do not snag or pull the strap over edges, as serious weakening may result.
- Do not use a Lug-All hoist as a tow line.
- Close latches on hook before using.
- Use only Lug-All replacement parts.

The use of the web strap hoist on or around energized lines may result in serious injury or death.