

Sublisplash®

Colour in Motion

Starting installation Ricoh GXe2600, GXe3300N, GX7000 and GXe7700N Adobe Photoshop

The screenshots in the following manual relate to the Ricoh GXe2600, GXe3300N, GX7000 and GXe7700N. The screenshots in this version of the instruction are regrettably partly in german. To make the instruction as easy to understand as possible we translated the relevant words and phrases.

1. RPCS Driver installation

Option 1: Copy the RPCS Driver from the Print Equipment disk or from the Ricoh disk, unzip the files in a folder of your choosing and run the setup in the chosen folder.

Option 2: You can also directly download the driver from the official Ricoh website:

SG3110DN: http://support.ricoh.com/bb/html/dr_ut_e/re1/model/sg3110dn/sg3110dn.htm

SG7100DN: http://support.ricoh.com/bb/html/dr_ut_e/re2/model/sg7100dn/sg7100dn.htm

2. Settings in the printer driver

2.1 To change the setting of the driver you are required to go to the printing preferences.

You will find them under control panel/printer & faxes/printing preferences.

Alternatively, under windows/start > click left mouse button on the respective Ricoh printer > printing preferences.

www.sublisplash.com

*All trademarks, product names and logos are the property of their respective owners.
Any rights not expressly granted herein are reserved.

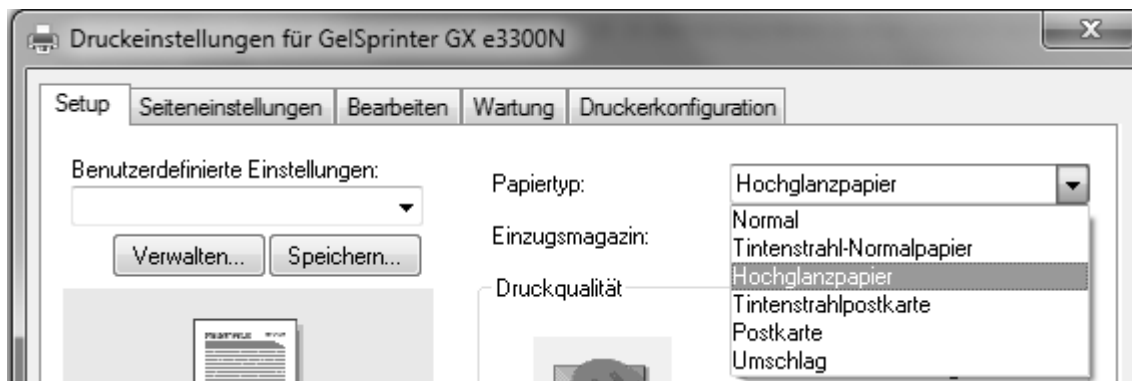
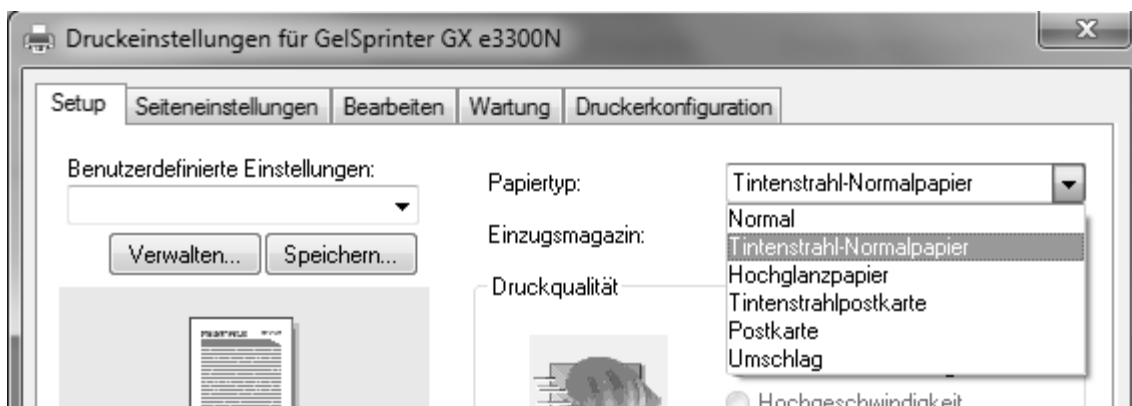
Sublisplash®

Colour in Motion

2.2 Change the following setting in the tab named “Setup”:

The settings of the paper type depend on the kind of transfer paper that is being used. If you use the Ricoh-TeXPrint paper (TXPF-RI) choose the setting inkjet plain paper (“Tintenstrahl-Normalpapier”).

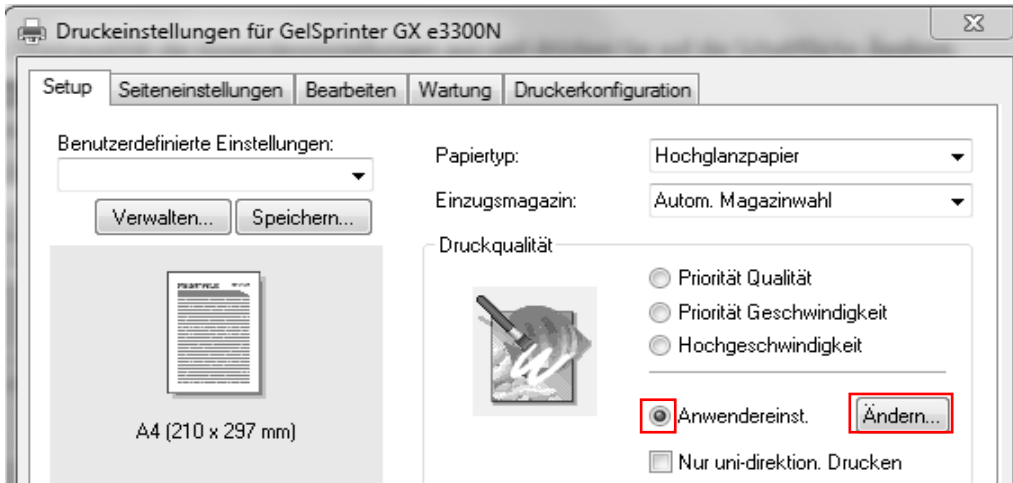
Alternatively, If TexPrint paper (TXPF-105) is being used, choose the setting high gloss paper (“Hochglanzpapier”). With high gloss paper the colour profile is slightly altered, which in turn means that colour differences could occur.



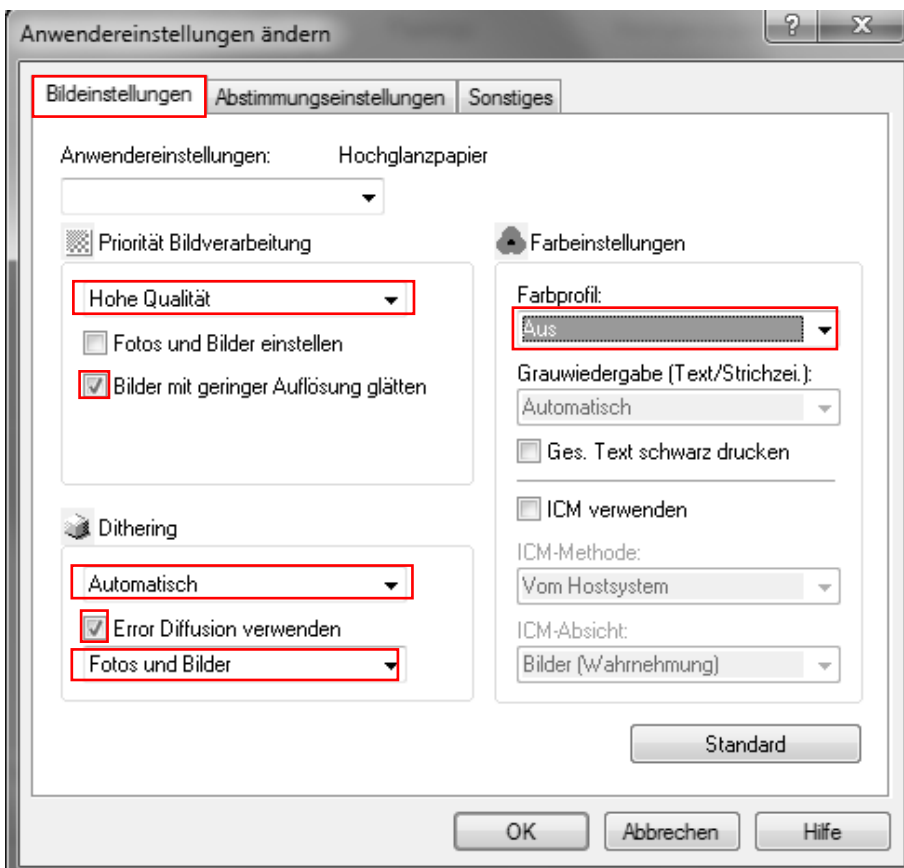
www.sublisplash.com

**All trademarks, product names and logos are the property of their respective owners.
Any rights not expressly granted herein are reserved.*

2.3 Select the custom print quality (“Anwendereinst.”) and press the change button (“Ändern...”).



2.4 A new window will open. in that window make the changes marked in red in the following screenshot.



Bildeinstellungen

= **Picture Settings**

Hohe Qualität

= **High Quality**

Fotos und Bilder

= **Photos and Pictures**

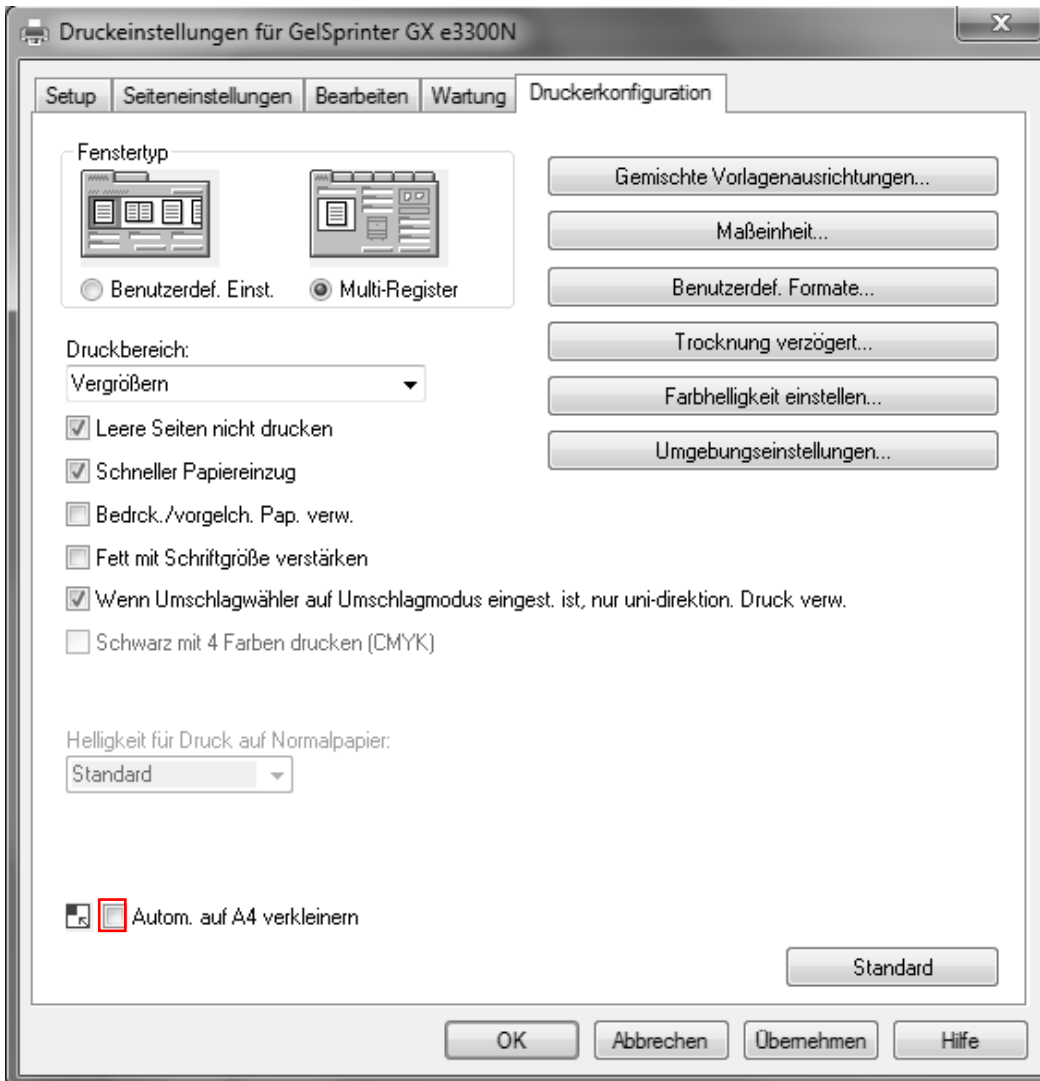
Aus = Off

2.5 Confirm the changed settings by pressing “OK”.

Sublisplash®

Colour in Motion

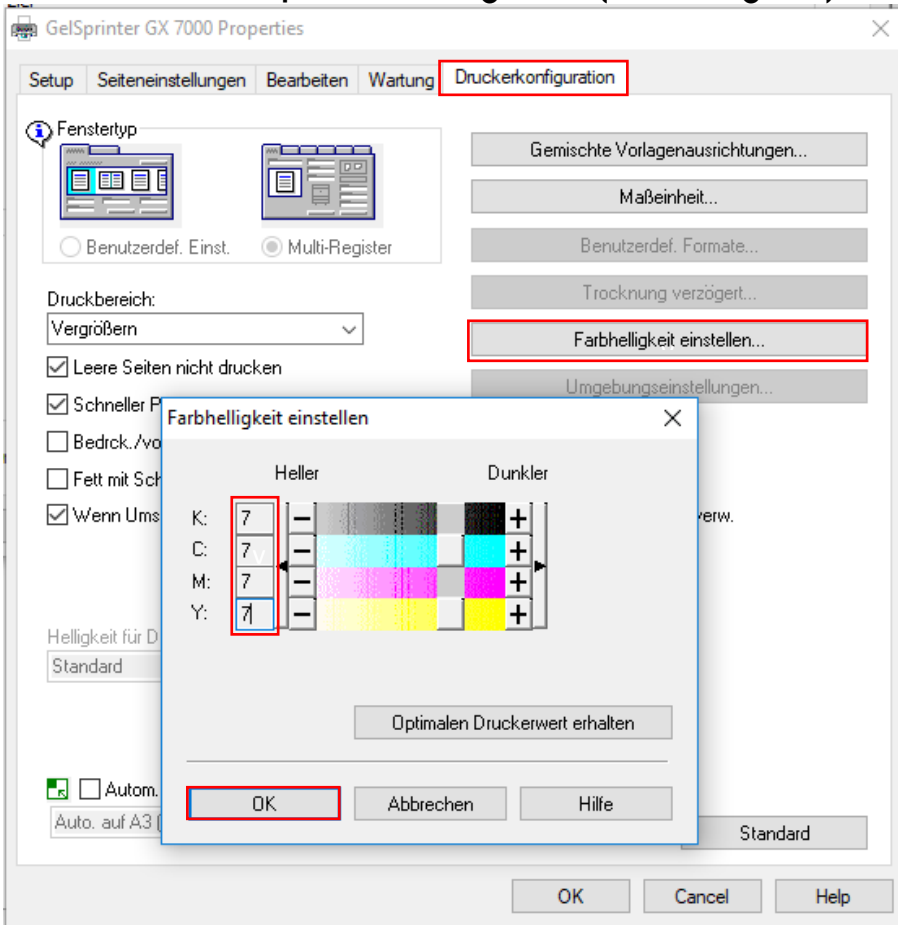
2.6 Switch to the printer config tab. Here uncheck the function automatically downsize (“Autom. auf A4 verkleinern”).



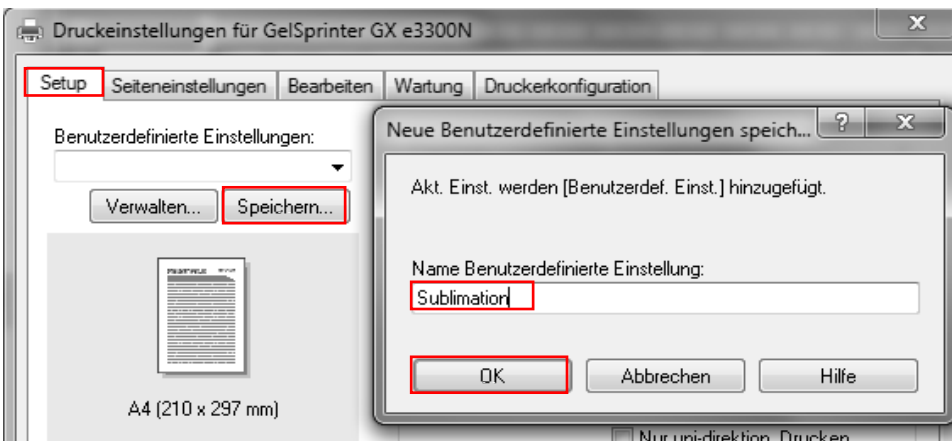
www.sublisplash.com

**All trademarks, product names and logos are the property of their respective owners.
Any rights not expressly granted herein are reserved.*

2.7 In the same tab press color brightness (“Farbhelligkeit”) and change all values to 7.



2.8 Afterwards you can save your custom settings by choosing to save (“Speichern”) them in the tab setup. We recommend clear and easy to recognize names like “Sublimation”.



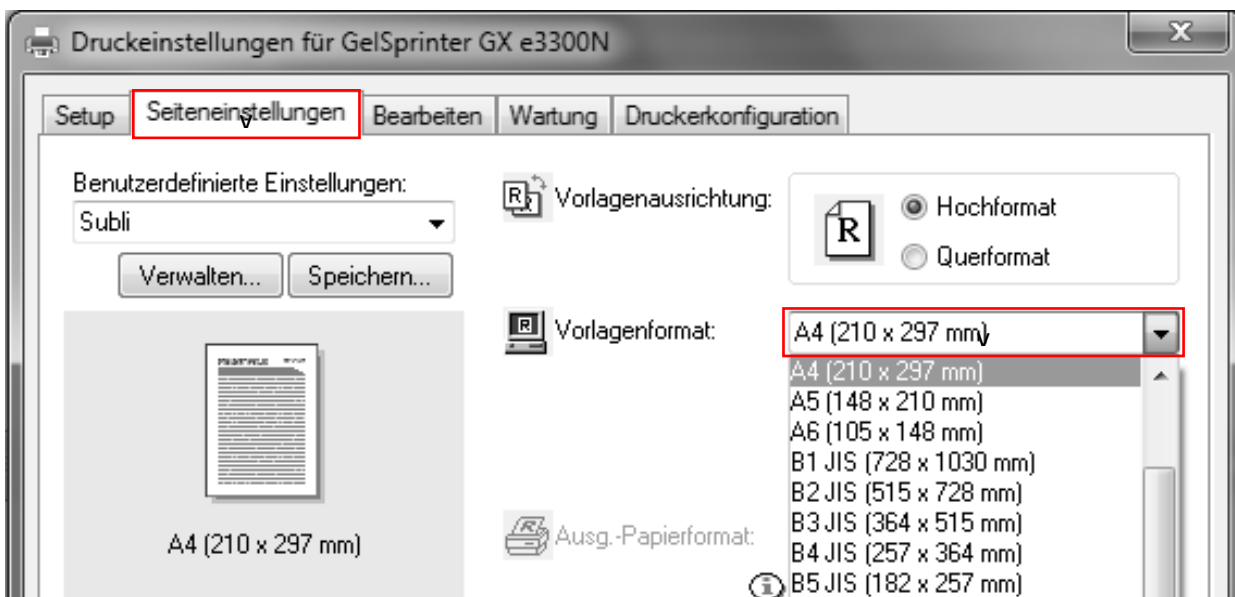
Confirm the name by pressing “OK”.

Sublisplash®

Colour in Motion

- Mirroring Images can't be set up within the driver,
- therefor you'll need to do it through your graphics program.

2.9 The paper format can't be saved in the custom settings. Select your preferred paperformat ("Vorlagenformat") in the tab page settings ("Seiteneinstellungen")



3. Installation of the ICC-profile

3.1 Open the folder of the ICC-profiles on the supplied disk.

3.2 Click the profile with the right mouse button and choose "install profile".

The profile is now automatically installed on your computer.

(Under the following path: C:/windows/system32/spool/drivers/color).

When installing the profile there will be no window asking for confirmation.

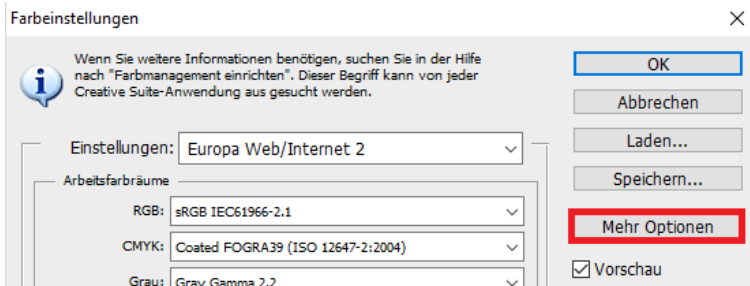
www.sublisplash.com

*All trademarks, product names and logos are the property of their respective owners.
Any rights not expressly granted herein are reserved.

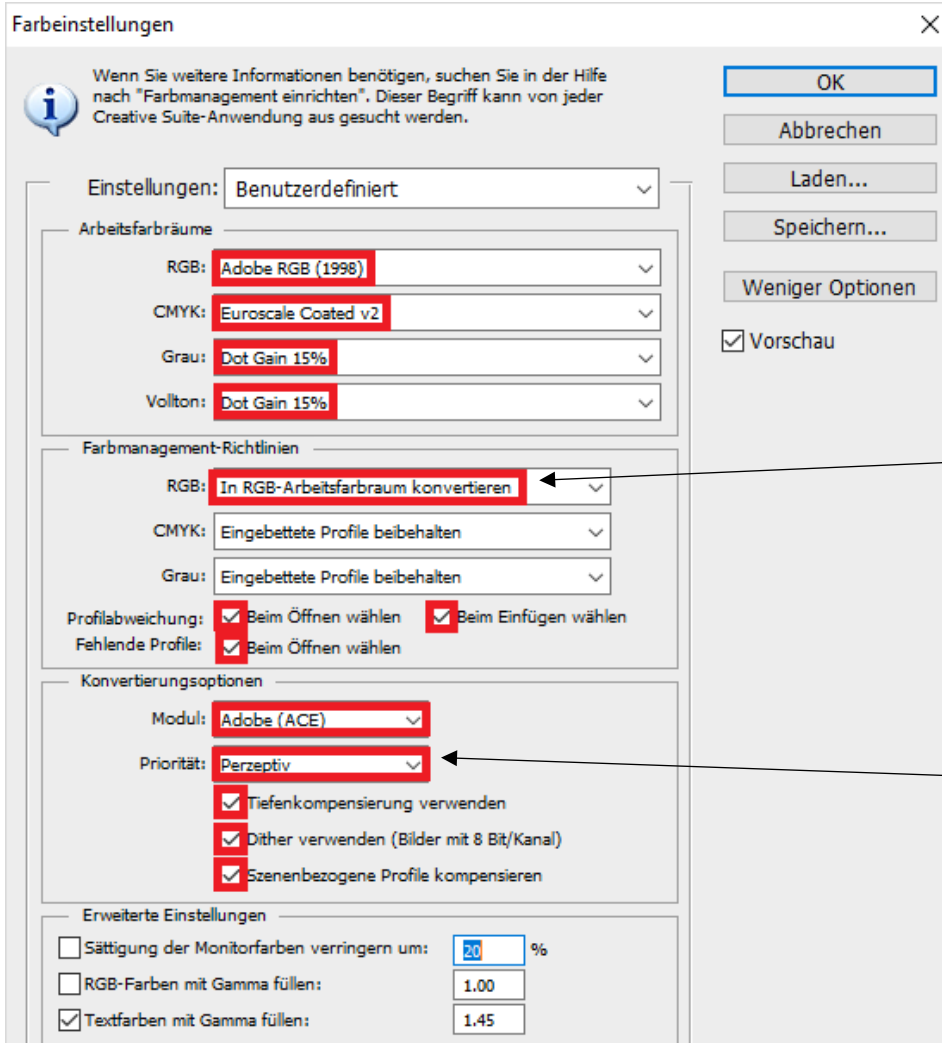
4. Colour settings in Adobe Photoshop

4.1 Open the tab Edit -> Color Settings

4.2 Click the “More Options” (Mehr Optionen) field.



Afterwards make the following changes:



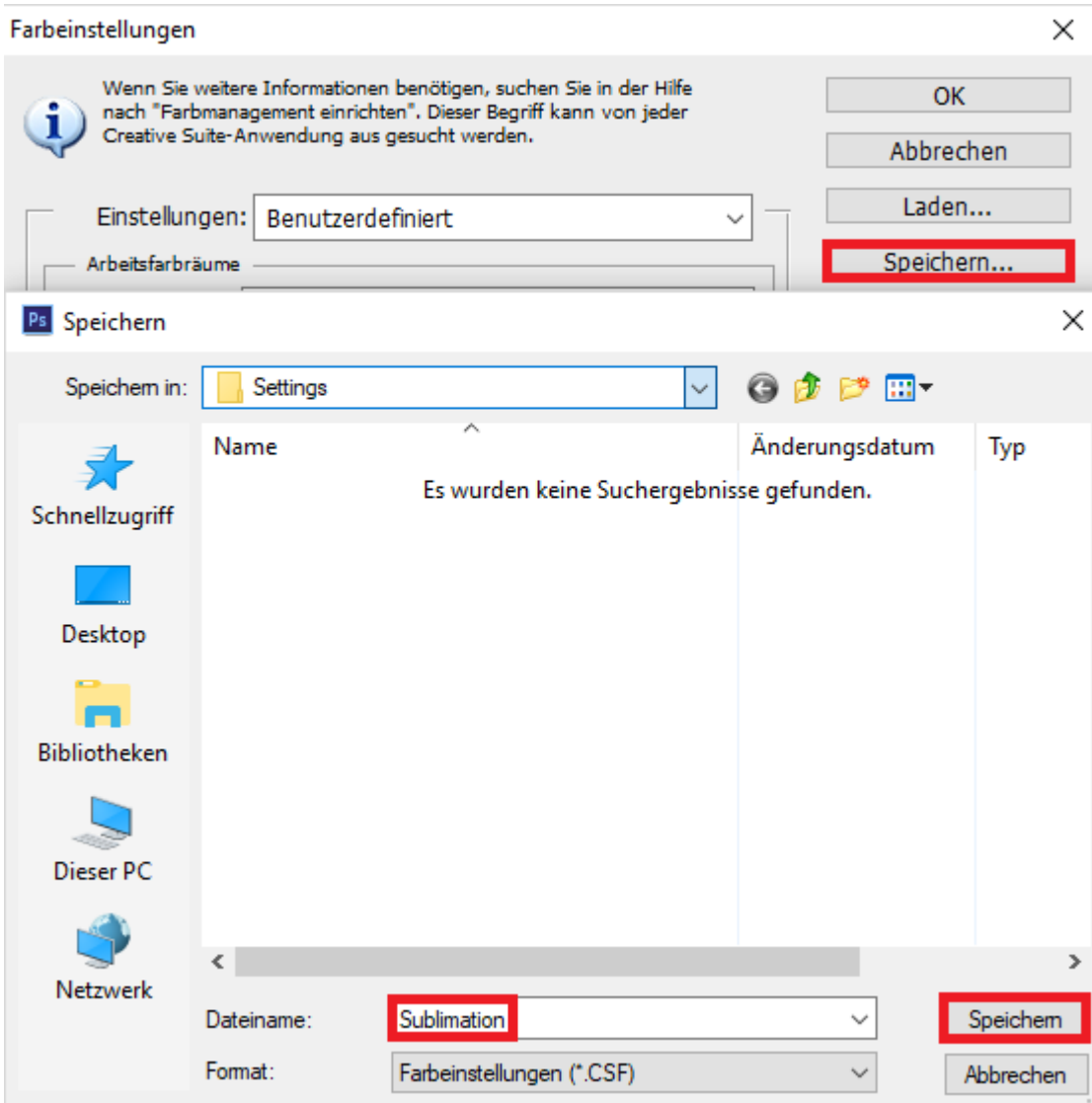
Convert to working RGB

Perceptual

4.3 Afterwards save (Speichern) the settings under an easily identifiable name e.g. Sublimation.

Sublisplash®

Colour in Motion



www.sublisplash.com

**All trademarks, product names and logos are the property of their respective owners.
Any rights not expressly granted herein are reserved.*