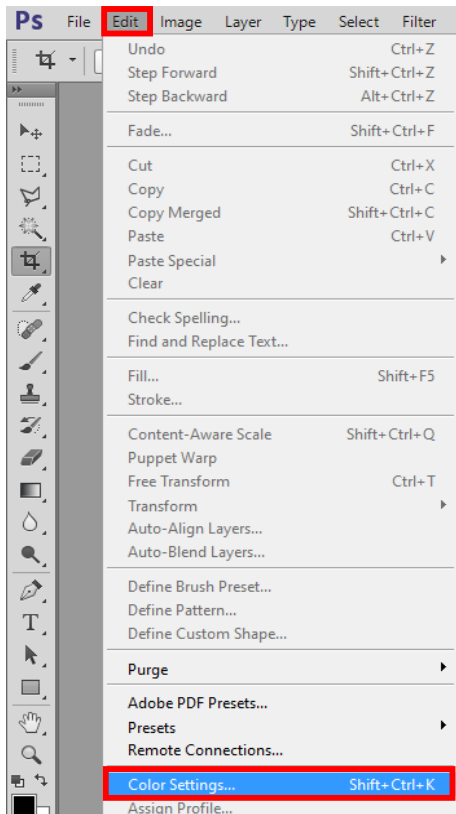


Sublisplash®

Colour in Motion

Integrating Color Profile for Epson WF-7710 Series with Sublisplash EPN+ inks Adobe Photoshop

1. Select and check color setting “Sublimation”



Click on “Edit” in the menu bar.

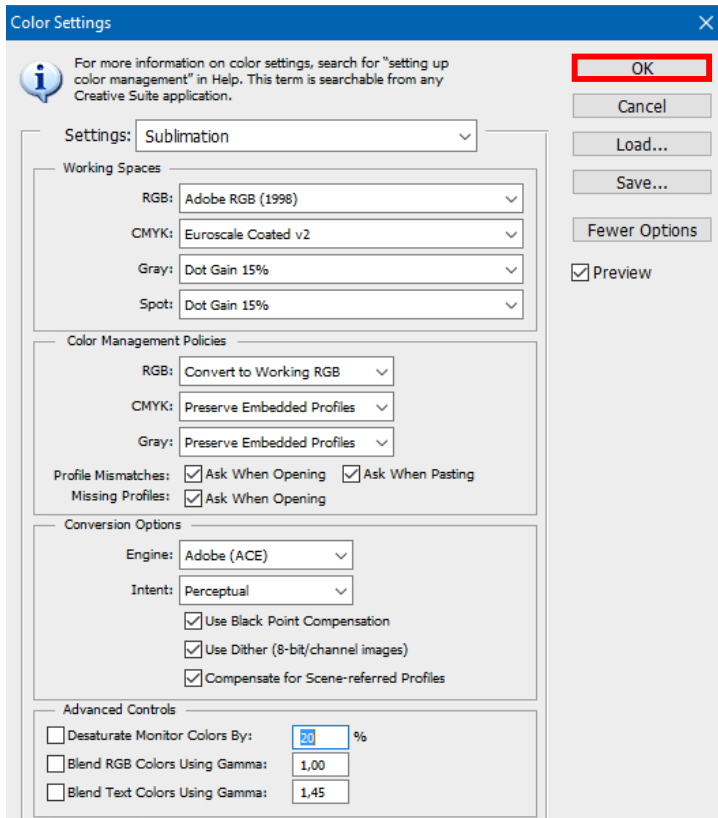
Click on “Color Settings...”.

www.sublisplash.de

**Alle Warenzeichen, Produktnamen und Logos sind Eigentum der jeweiligen Besitzer.
Alle hier nicht ausdrücklich gewährten Rechte bleiben vorbehalten.*

Sublisplash®

Colour in Motion



Check if "Sublimation" is selected under "Settings:". If not, select it.

Please check if your settings are exactly as you see them in this screenshot.

Click on "OK" to close the window.

www.sublisplash.de

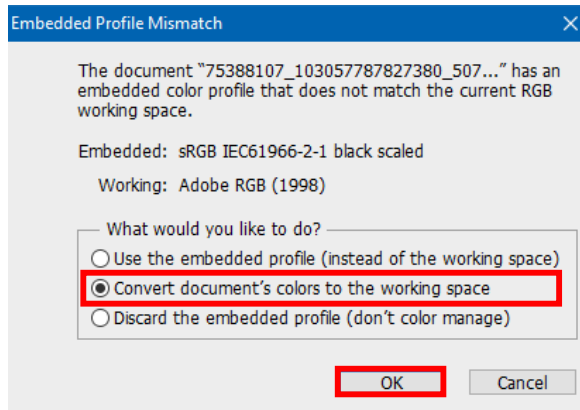
**Alle Warenzeichen, Produktnamen und Logos sind Eigentum der jeweiligen Besitzer.
Alle hier nicht ausdrücklich gewährten Rechte bleiben vorbehalten.*

Sublisplash®

Colour in Motion

2. Open a file and edit it if necessary

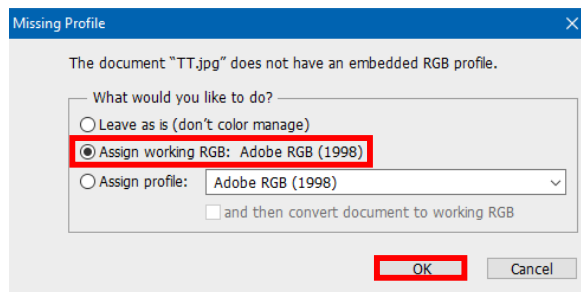
If the file has a different working colour space, the window "Embedded Profile Mismatch" appears.



Select the option "Convert document's colors to the working space".

Confirm by clicking on "OK".

If the file has no working colour space, the window "Missing Profile" appears.



Select the option "Assign working RGB: Adobe RGB (1998)".

Confirm by clicking on "OK".

www.sublisplash.de

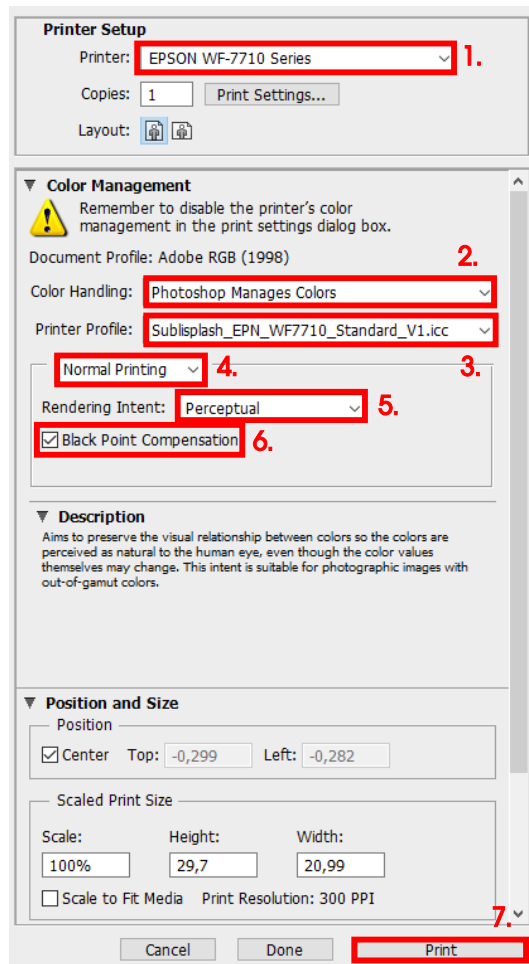
**Alle Warenzeichen, Produktnamen und Logos sind Eigentum der jeweiligen Besitzer.
Alle hier nicht ausdrücklich gewährten Rechte bleiben vorbehalten.*

Sublisplash®

Colour in Motion

3. Assign our ICC color profile and print the file

Click in the menu bar on "File" and then in the drop-down menu on "Print" to call up the Photoshop print dialogue.



1. Select the "Epson WF-7710 Series" in the printer field.

2. Select "Color Handling:" "Photoshop Manages Colors".

3. Select our current ICC color profile under "Printer Profile".

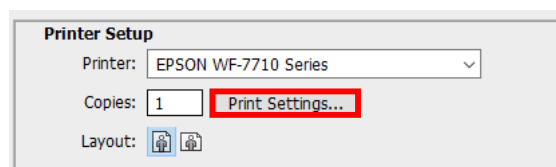
4. Select "Normal Printing".

5. Under "Rendering Intent:" select "Perceptual".

6. Check "Black Point Compensation".

7. To print now, click "Print".

Practical tip: Before you print, we recommend that you check to ensure that the print preset currently set in the printer driver is correct.



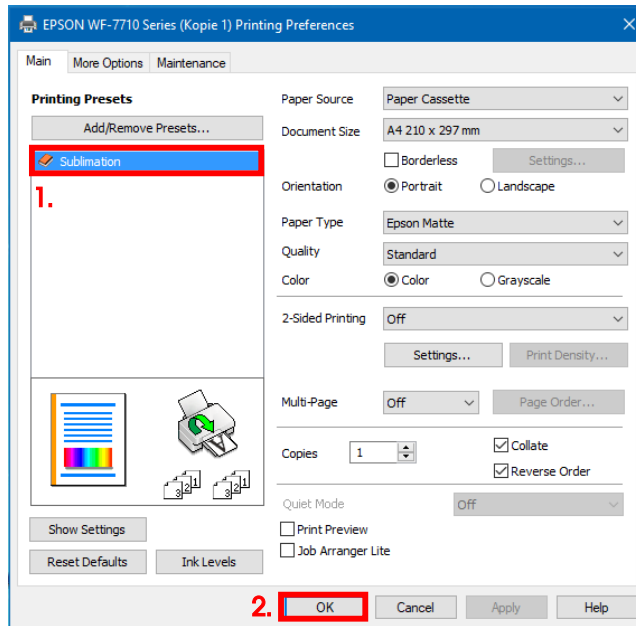
To do this, click on "Print Settings..." in the Photoshop print dialogue.

www.sublisplash.de

**Alle Warenzeichen, Produktnamen und Logos sind Eigentum der jeweiligen Besitzer.
Alle hier nicht ausdrücklich gewährten Rechte bleiben vorbehalten.*

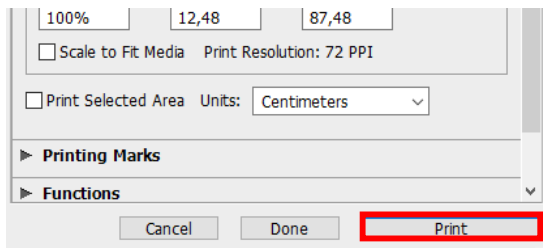
Sublisplash®

Colour in Motion



1. Under "Printing Presets" select the setting "Sublimation" (shown in blue) by clicking on it.

2. Confirm your selection by clicking on "OK". The window closes.



By clicking on "Print" you start the printout.

www.sublisplash.de

**Alle Warenzeichen, Produktnamen und Logos sind Eigentum der jeweiligen Besitzer.
Alle hier nicht ausdrücklich gewährten Rechte bleiben vorbehalten.*