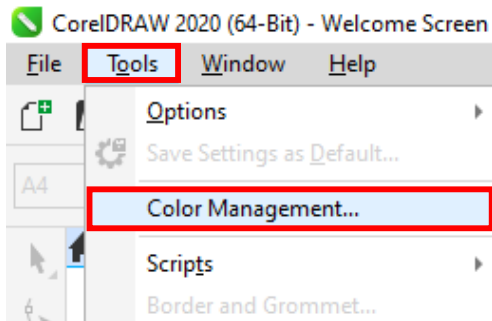


Sublisplash®

Colour in Motion

Integrating Color Profile for Epson WF-7210 Series with Sublisplash EPN+ inks CorelDraw (from X5)

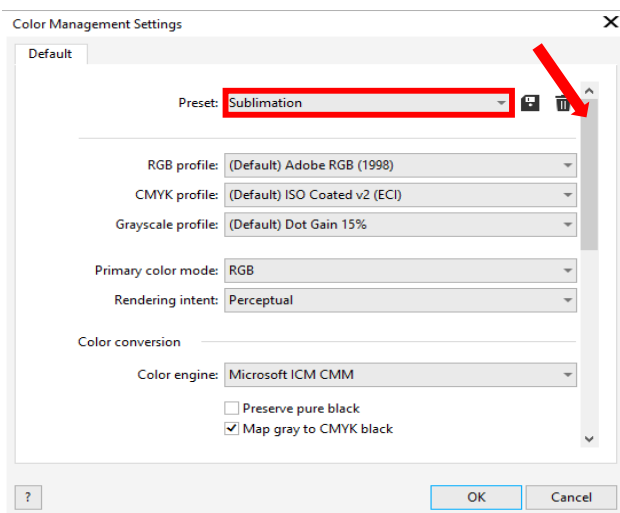
1. Check color settings in CorelDraw



Start CorelDraw

Click on "Tools" in the menu bar.

Click on "Color Management...".



Check whether the setting "Sublimation" is selected in the "Preset:" field. If this is not the case, open the list of default settings by clicking on the "Down Arrow" symbol in the entry field and select the "Sublimation" setting.

Check if the settings are correct. The correct settings are shown in the screenshot to the left.

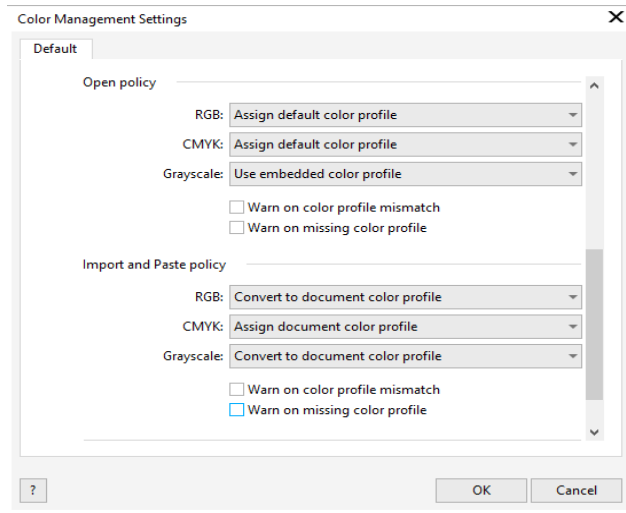
As the entire content cannot be displayed at once in the window, you have to **scroll down** (marked with an arrow) until you see "Open policy" at the top of the window.

www.sublisplash.de

**Alle Warenzeichen, Produktnamen und Logos sind Eigentum der jeweiligen Besitzer.
Alle hier nicht ausdrücklich gewährten Rechte bleiben vorbehalten.*

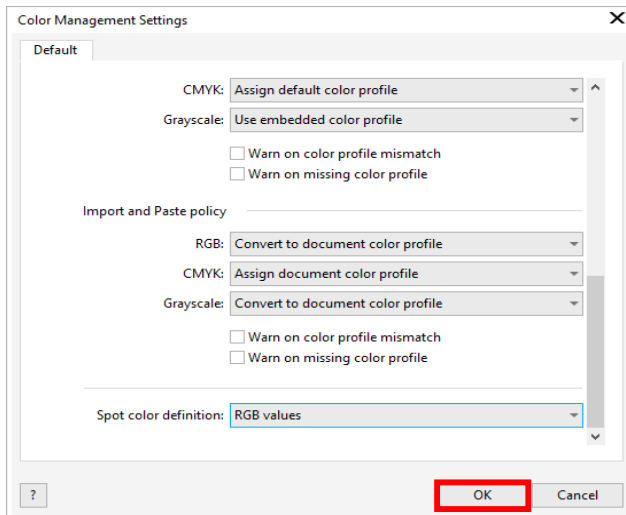
Subsplash®

Colour in Motion



Check that the settings are exactly the same as in the screenshot.

Scroll down to the very end.



Here again, take the settings exactly as you see them in this screenshot.

Click on "OK" to close the "Colour Management Settings" window.

www.subsplash.de

**Alle Warenzeichen, Produktnamen und Logos sind Eigentum der jeweiligen Besitzer.
Alle hier nicht ausdrücklich gewährten Rechte bleiben vorbehalten.*

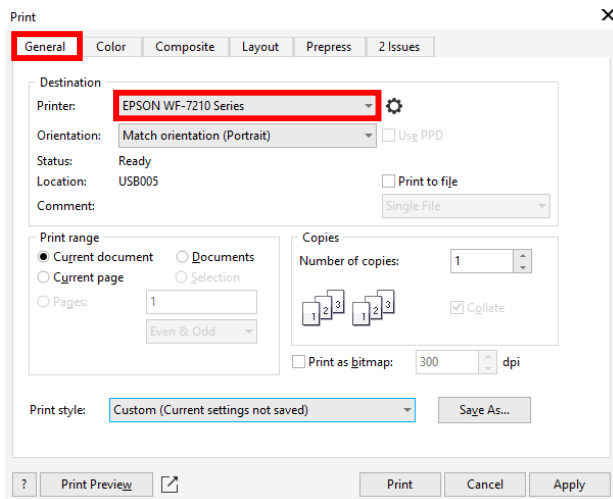
Sublisplash®

Colour in Motion

2. Loading a file and assigning the ICC Color Profile in CorelDraw

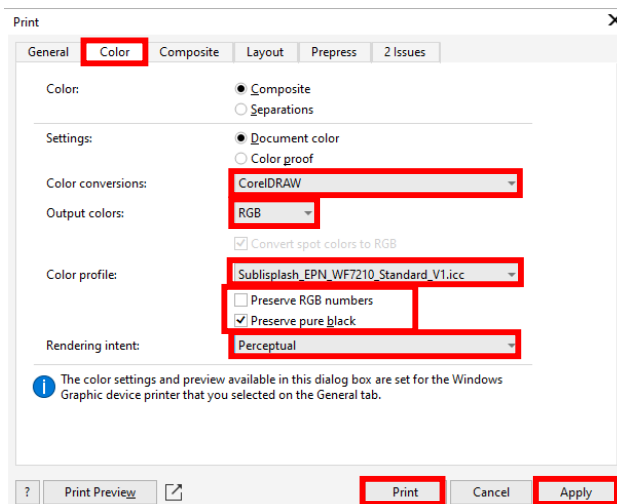
Start CorelDraw and open any file.

Click on **"File"** in the menu bar and then in the drop down menu on **"Print..."** to call up the CorelDraw **"Print"** dialogue.



In the tab **"General"**, select your **"Epson WF-7210 Series"** in the printer field.

Now click on the tab **"Color"**.



Take the settings exactly as you see them in this screenshot.

Make sure that our current ICC Color Profile is selected in the **"Color profile:"** field.

Click on **"Apply"** to accept the settings.

To print now, click **"Print"**.

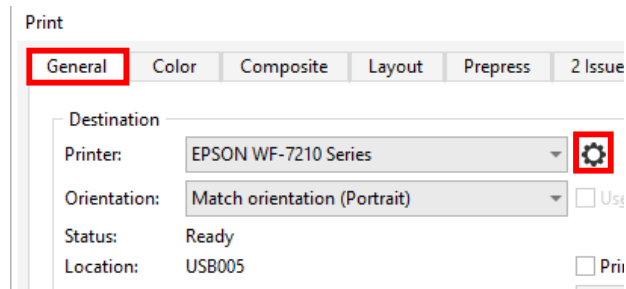
Practical tip: Before you print, we recommend that you check to ensure that the print preset currently set in the printer driver is correct.

www.sublisplash.de

**Alle Warenzeichen, Produktnamen und Logos sind Eigentum der jeweiligen Besitzer.
Alle hier nicht ausdrücklich gewährten Rechte bleiben vorbehalten.*

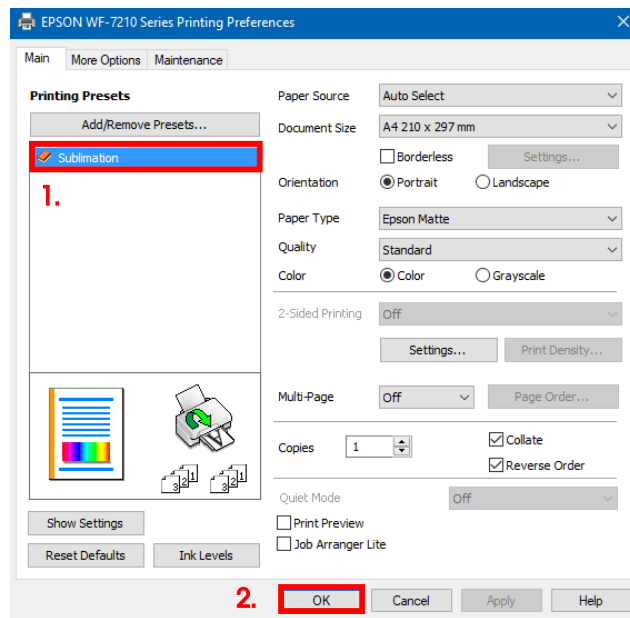
Sublisplash®

Colour in Motion



Click on the tab "General".

Click on the "Gear" icon to call up "EPSON WF-7210 Series Properties".



1. Under "Printing Presets" select the setting "Sublimation" (shown in blue).

2. Confirm your selection by clicking on "OK". The "EPSON WF-7210 Series Properties" window closes.

Place a few sheets of **TexPrint-DT** (was previously called TexPrint-R) paper into the paper tray of the printer with the printed side facing up.



By clicking on "Print" you start the printout.

www.sublisplash.de

**Alle Warenzeichen, Produktnamen und Logos sind Eigentum der jeweiligen Besitzer.
Alle hier nicht ausdrücklich gewährten Rechte bleiben vorbehalten.*