

Sublisplash®

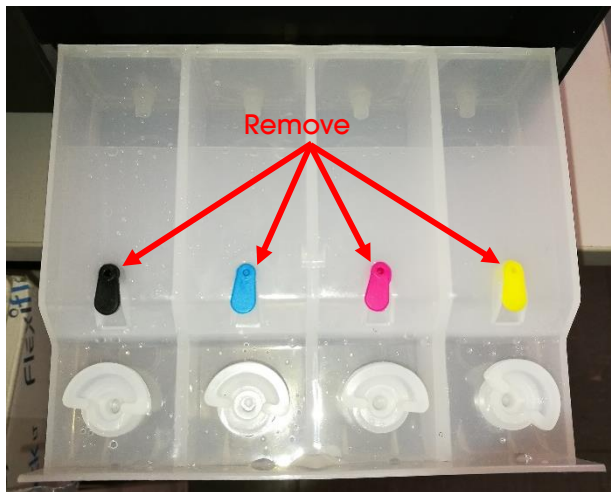
Colour in Motion

Initial Setup Epson WF-7210 Series (Modified) with Sublisplash EPN+ inks Corel Draw (from X5)

1. Initial ink fill / Initialization

After unpacking the printer remove the **blue** shipping protective elements and the **red** shipping protection from the ink tank. **Do not connect the printer to the power supply yet!**

Open the ink tank and **remove the coloured aeration plugs**. Store them in a safe place. They will be necessary should you need to transport or ship the printer at a later date!



The next step is to fill the empty ink tanks. When filling the tanks, it is essential to fill the correct ink colour in the corresponding colour tank! The colour order is from **left to right**:

K (Black), C (Cyan), M (Magenta), Y (Yellow)

The order of the colours is also visible when you lift the printer cover. There is a sticker above the ink tanks with the colour order.

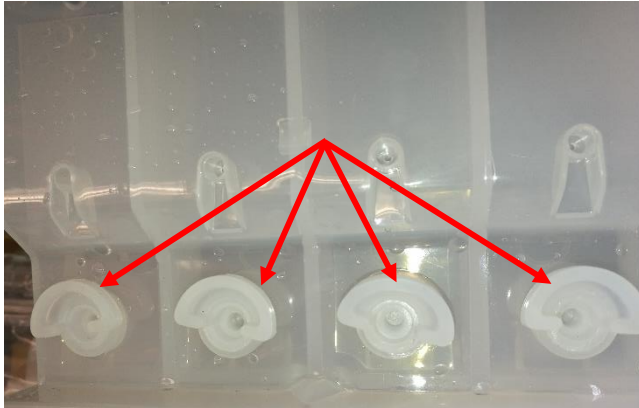
www.sublisplash.de

*Alle Warenzeichen, Produktnamen und Logos sind Eigentum der jeweiligen Besitzer.
Alle hier nicht ausdrücklich gewährten Rechte bleiben vorbehalten.

Sublisplash®

Colour in Motion

To fill each tank, remove the **transparent filler plug** and fill the tank with **60ml Sublisplash EPN+** ink of the correct colour using the supplied syringe (with hollow needle attached). Please always use the same syringe for one colour! After filling the ink tank, close the fill hole with the transparent filler plug.



Close the ink tank cover and allow it to lock into place.

After checking once more that all shipping protection elements have been removed, the printer can be plugged in and turned on. The initialization routine will start **automatically**.

www.sublisplash.de

*Alle Warenzeichen, Produktnamen und Logos sind Eigentum der jeweiligen Besitzer.
Alle hier nicht ausdrücklich gewährten Rechte bleiben vorbehalten.

Sublisplash®

Colour in Motion

2. Installing Printer Software

Download the appropriate driver for your operating system (**Win10 32bit** or **Win10 64bit**) directly from the Epson Homepage and save it.

Link to driver version **Win10 32bit**:

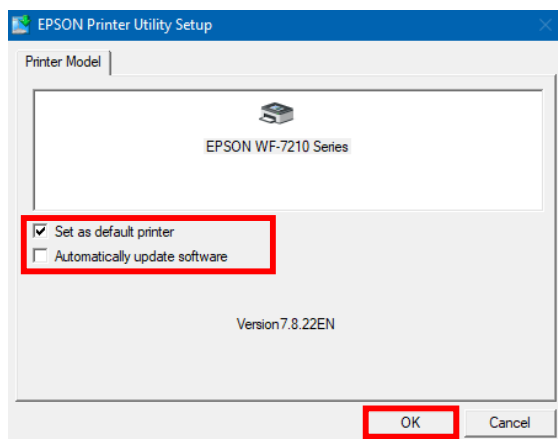
<https://download.epson-europe.com/pub/download/6286/epson628635eu.exe>

Link to driver version **Win10 64bit**:

<https://download.epson-europe.com/pub/download/6286/epson628634eu.exe>

Start the setup by double clicking on the EXE file.

After a short time the following window appears:



If the printer is to be set up as the default printer, leave the option **"Set as default printer"** checked. Otherwise remove the check mark.

The **"Automatically update software"** check mark **must be REMOVED!**

Click on **"OK"** to continue with the setup.

Follow the instructions. Once the setup is complete, we recommend restarting your computer.

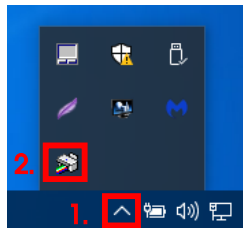
www.sublisplash.de

*Alle Warenzeichen, Produktnamen und Logos sind Eigentum der jeweiligen Besitzer.
Alle hier nicht ausdrücklich gewährten Rechte bleiben vorbehalten.

Sublisplash®

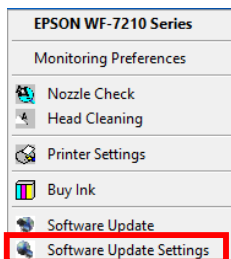
Colour in Motion

The Epson software automatically searches for updates within a specified period. As this can lead to problems, we turn it off as follows:

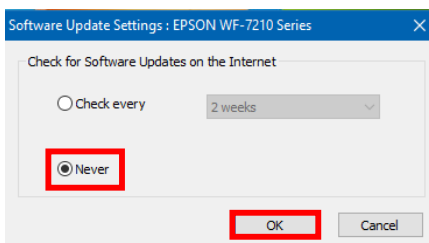


1. Click on the "UP Arrow" in the status bar.

2. Right click on the "Status Monitor" icon.



Right click on "Software Update Settings".



Click on the option "Never".

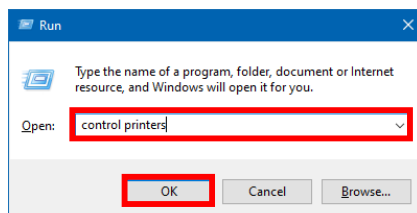
Confirm by clicking on "OK".

3. Configuring printer driver

3.1 To view print settings:



Press the "Windows" + "R" keys simultaneously.



In the "Open:" field enter "control printers".

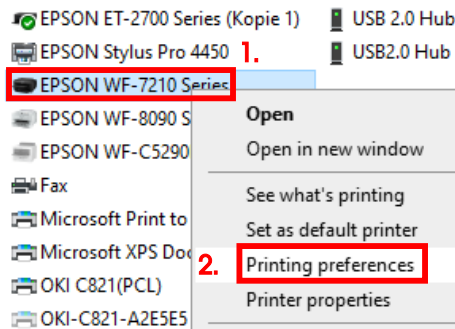
Click on "OK".

www.sublisplash.de

**Alle Warenzeichen, Produktnamen und Logos sind Eigentum der jeweiligen Besitzer.
Alle hier nicht ausdrücklich gewährten Rechte bleiben vorbehalten.*

Sublisplash®

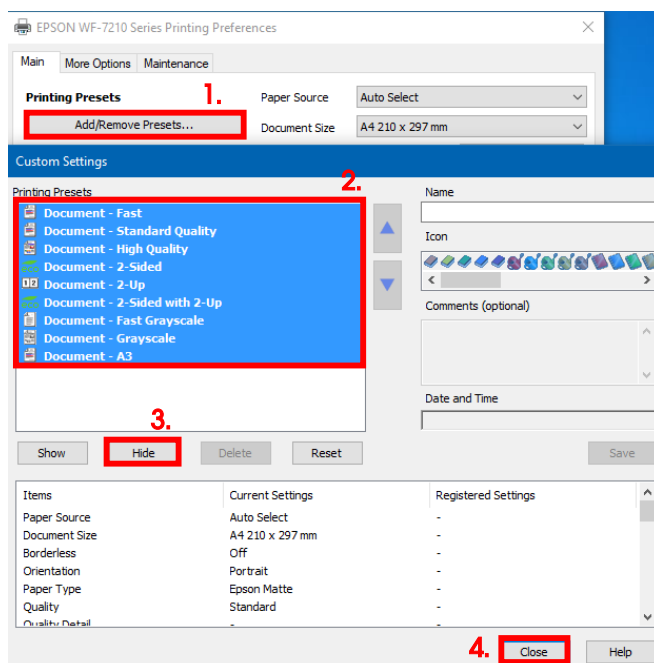
Colour in Motion



1. Right click on "EPSON WF-7210 Series".

2. Click on "Printing preferences".

3.2 Configure and save print settings:



1. Click on "Add/Remove Presets..."

2. Select all entries. Click on the first entry, hold down the "Shift" key and click on the last entry.

3. Click on "Hide".

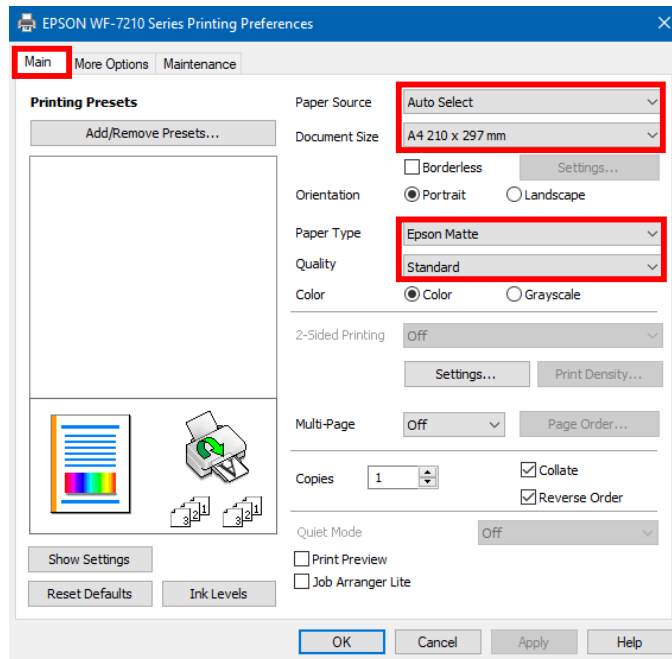
4. Click on "Close".

www.sublisplash.de

**Alle Warenzeichen, Produktnamen und Logos sind Eigentum der jeweiligen Besitzer.
Alle hier nicht ausdrücklich gewährten Rechte bleiben vorbehalten.*

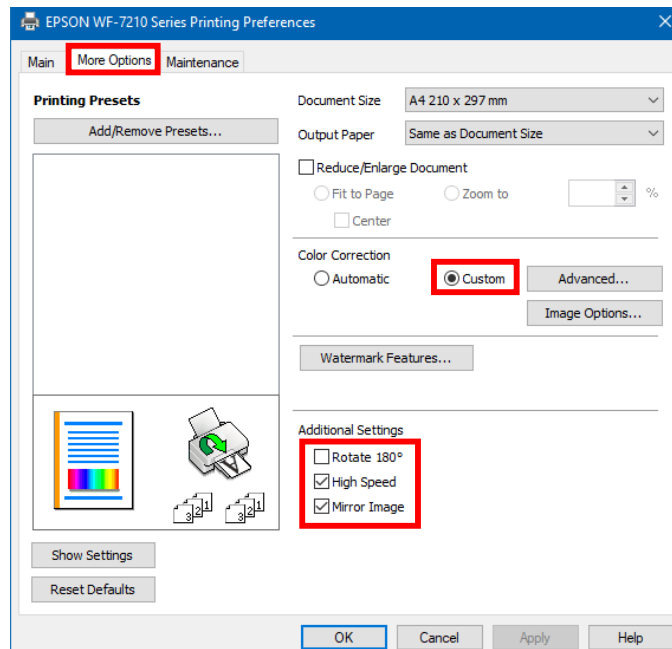
Sublisplash®

Colour in Motion



In the tab "Main", please set the following settings:

| | |
|----------------|-----------------|
| Paper Source: | Auto Select |
| Document Size: | A4 210 x 297 mm |
| Orientation: | Portrait |
| Paper Type: | Epson Matte |
| Quality: | Standard |
| Color: | Color |



In the tab "More Options" set the following settings:

| | |
|-------------------|--------|
| Color Correction: | Custom |
|-------------------|--------|

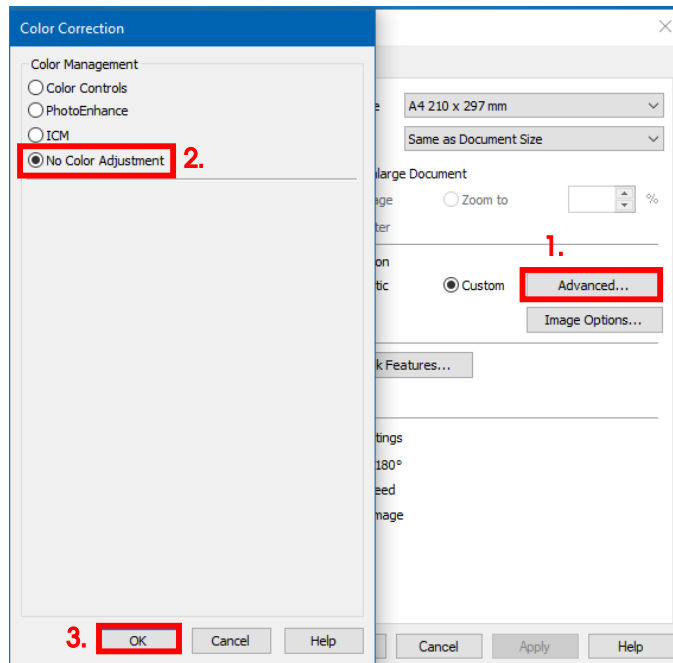
Check "High Speed".
Check "Mirror Image".

www.sublisplash.de

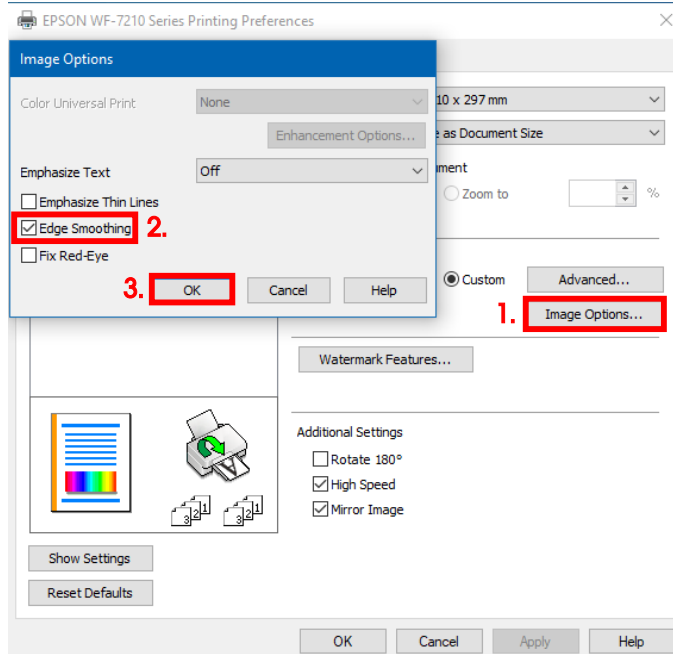
**Alle Warenzeichen, Produktnamen und Logos sind Eigentum der jeweiligen Besitzer.
Alle hier nicht ausdrücklich gewährten Rechte bleiben vorbehalten.*

Sublisplash®

Colour in Motion



1. Click on "Advanced..."
2. Click on the option "No Color Adjustment".
3. Confirm by clicking on "OK".



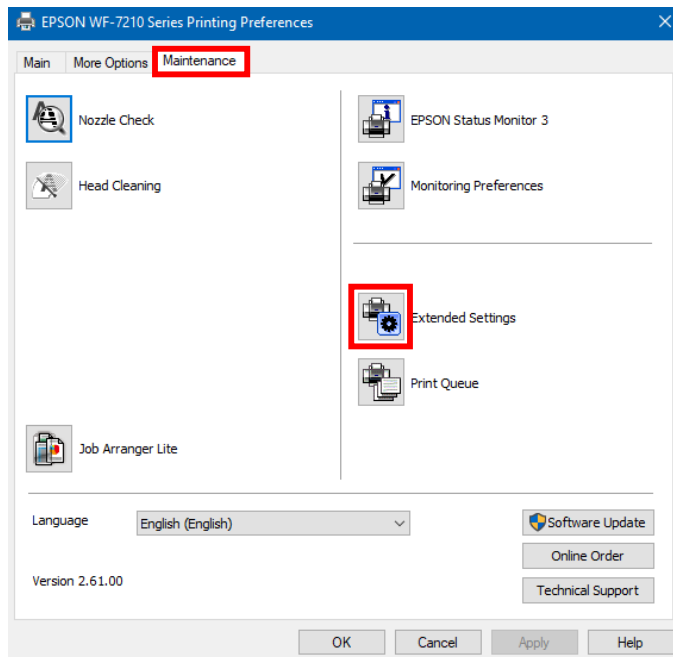
1. Click on "Image Options..."
2. Check "Edge Smoothing".
3. Confirm by clicking on "OK".

www.sublisplash.de

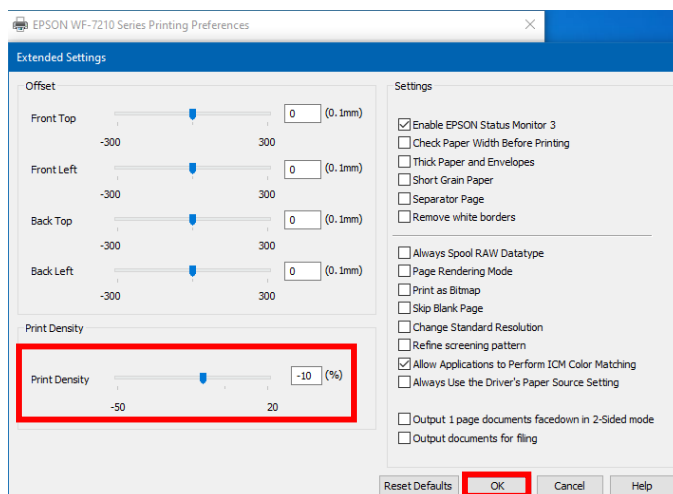
**Alle Warenzeichen, Produktnamen und Logos sind Eigentum der jeweiligen Besitzer.
Alle hier nicht ausdrücklich gewährten Rechte bleiben vorbehalten.*

Sublisplash®

Colour in Motion



In the tab "Maintenance" click on the button "Extended Settings".



Set the value for "Print Density" to "-10".

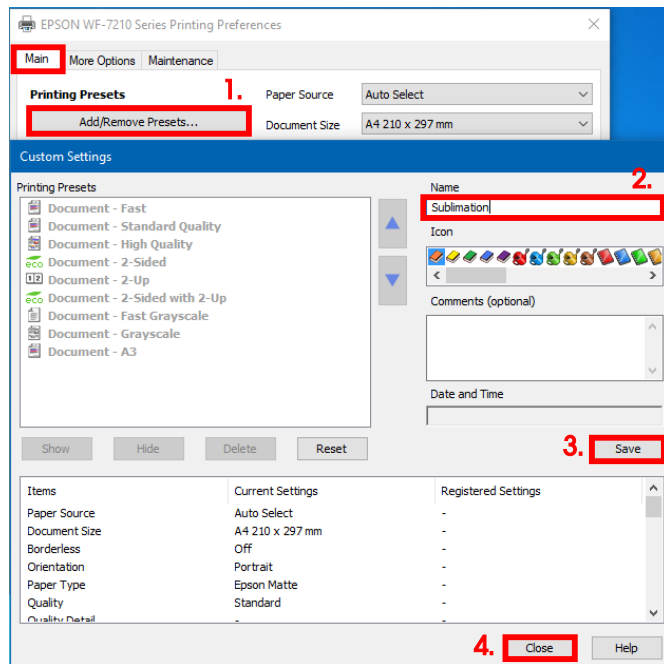
Confirm your changes by clicking on "OK".

www.sublisplash.de

**Alle Warenzeichen, Produktnamen und Logos sind Eigentum der jeweiligen Besitzer.
Alle hier nicht ausdrücklich gewährten Rechte bleiben vorbehalten.*

Sublisplash®

Colour in Motion



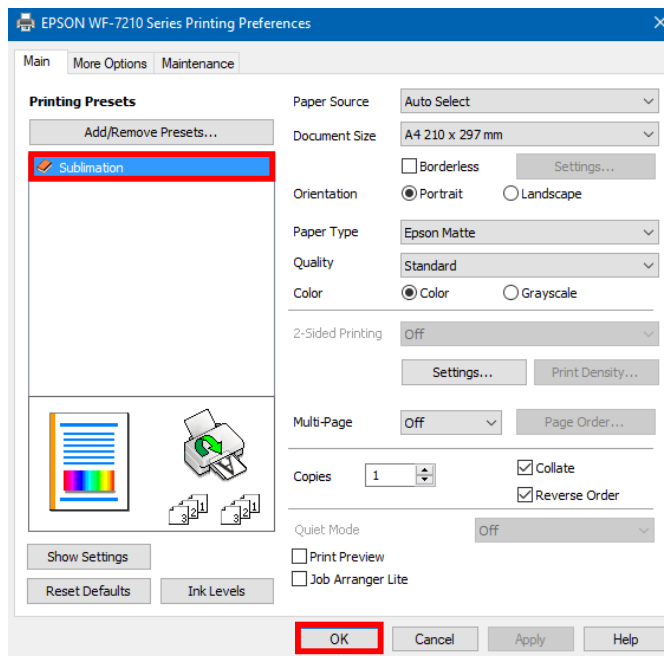
Click on the tab "Main".

1. Click on "Add/Remove Presets..."

2. Enter a name for your preferences.

3. Click on "Save" to save your preferences under the given name.

4. Click on "Close" to return to the "Main" screen.



Clicking on the name activates your preferences.

Click "OK" to close the window.

www.sublisplash.de

*Alle Warenzeichen, Produktnamen und Logos sind Eigentum der jeweiligen Besitzer.
Alle hier nicht ausdrücklich gewährten Rechte bleiben vorbehalten.

Sublisplash®

Colour in Motion

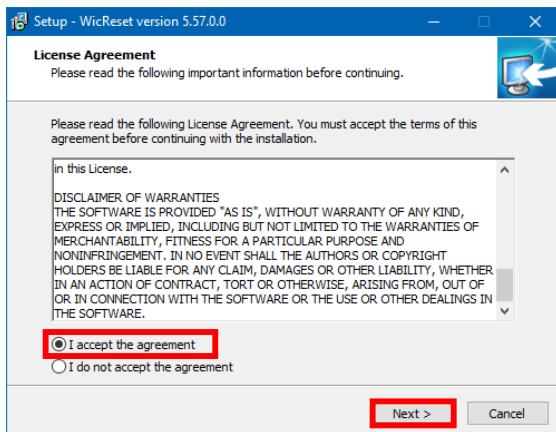
4. Install WIC Reset Utility and start up the printer

Download the WIC Reset Utility directly from the homepage and save it on your computer.

Link to the WIC Reset Utility:

<http://www.2manuals.com/WIC/wicreset.exe>

Start the setup by double clicking on the EXE file.



Click on the option “I accept the agreement”.

Click on “Next >” to close the window.

Follow the setup instructions until you come to this window:



Make sure that “Launch WICReset” is checked.

Click on “Finish” to end setup and start the WIC Reset Utility.

The WIC Reset Utility will check if a newer version is available. If so, the new version will be installed and the WIC Reset Utility will be closed and restarted.

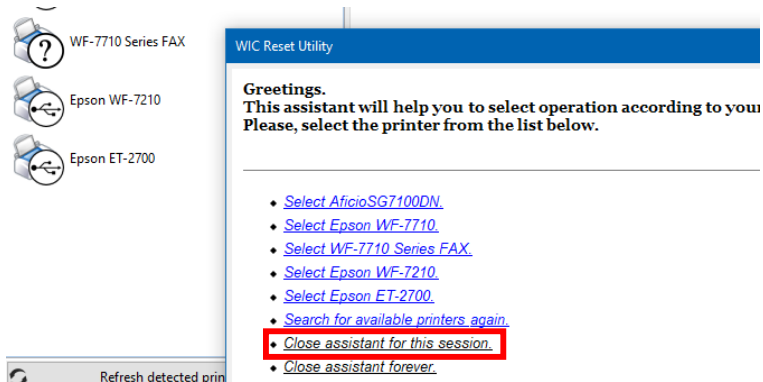
www.sublisplash.de

**Alle Warenzeichen, Produktnamen und Logos sind Eigentum der jeweiligen Besitzer.
Alle hier nicht ausdrücklich gewährten Rechte bleiben vorbehalten.*

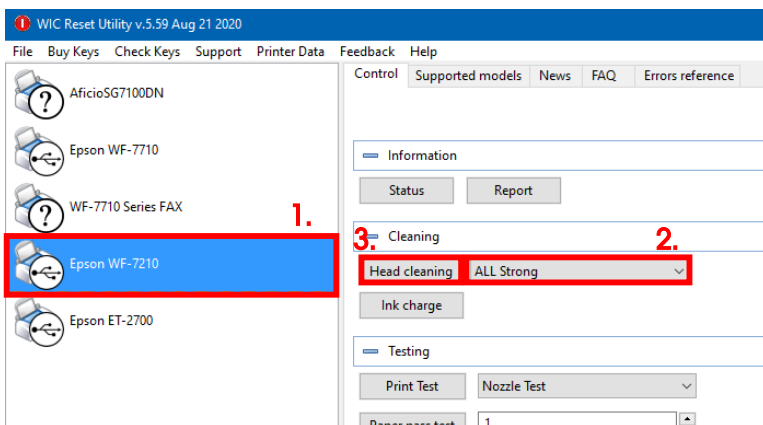
Sublisplash®

Colour in Motion

The following window appears right after starting WIC Reset Utility:



Click on "Close assistant for this session."



1. Click on "Epson WF-7210".

2. Select "ALL Strong" in the options.

3. Click on "Head cleaning". You have to repeat this step a total of **4 times!**

Wait until each run is complete before starting the next one.

After the **fourth run** we now check whether the printer's ink system has been completely filled (and that the storage fluid has been removed from the system).

www.sublisplash.de

**Alle Warenzeichen, Produktnamen und Logos sind Eigentum der jeweiligen Besitzer.
Alle hier nicht ausdrücklich gewährten Rechte bleiben vorbehalten.*

Sublisplash®

Colour in Motion

Open the printer cover and check the ink lines on the print head. If **all lines are filled** (as shown in the picture below) a first nozzle check can be conducted. If not, repeat the "Head cleaning" step (step 3 in the previous section) **2 more times**.



If after doing this the lines are still not correctly filled or empty, please contact us.

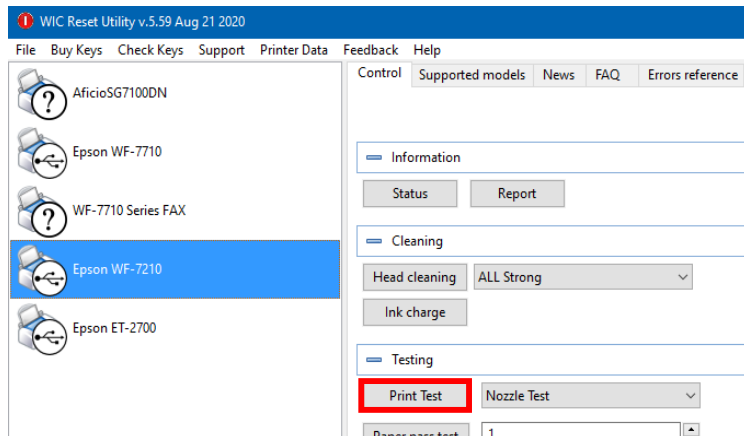
www.sublisplash.de

*Alle Warenzeichen, Produktnamen und Logos sind Eigentum der jeweiligen Besitzer.
Alle hier nicht ausdrücklich gewährten Rechte bleiben vorbehalten.

Sublisplash®

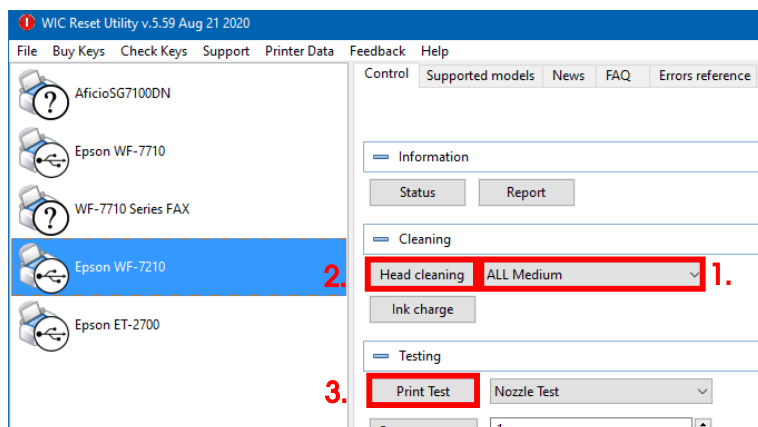
Colour in Motion

Place a few sheets of **A4 paper** in the paper tray (normal copy paper is sufficient).



Click on **"Print Test"** to print a nozzle check.

If the nozzle check is not complete, you must now clean the print head.



1. Select **"ALL Medium"** in the options.
2. Click on **"Head cleaning"**.
3. Click on **"Print Test"** to print a nozzle check.

If the nozzle check is not correct, repeat steps 1-3 a maximum of **3 times**. Allow the printer to sit for **about an hour** so that the ink can settle.

Afterwards, print a nozzle check (step 3) and repeat steps 1-3 if necessary.

The WIC Reset Utility can now be closed.

www.sublisplash.de

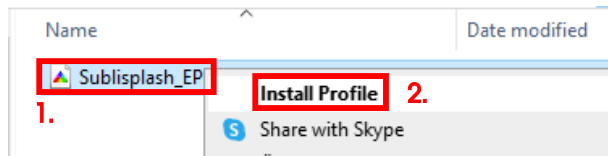
**Alle Warenzeichen, Produktnamen und Logos sind Eigentum der jeweiligen Besitzer.
Alle hier nicht ausdrücklich gewährten Rechte bleiben vorbehalten.*

Sublisplash®

Colour in Motion

5. Download and install ICC color profile

Go to <https://www.sublisplash.com/de/downloads/> and download the appropriate ICC color profile for your printer. **ATTENTION:** You have to select the ICC color profile for **EPN+ inks!**



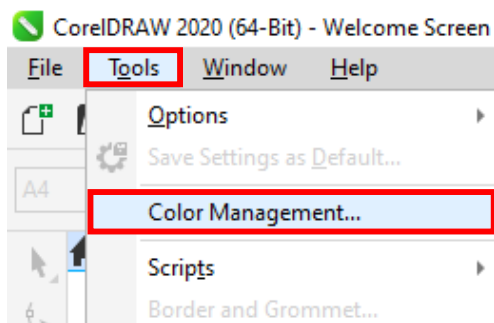
1. Right click on the ICC color profile.

2. Click on "Install Profile" in the window.

The window closes and the ICC color profile is installed on your computer. No status window or confirmation message will be displayed.

Tip: Windows stores its ICC color profiles in the folder "C:\windows\system32\spool\drivers\color".

6. Create Color Management Setting "Sublimation" in CorelDraw



Start CorelDraw

Click on "Tools" in the menu bar.

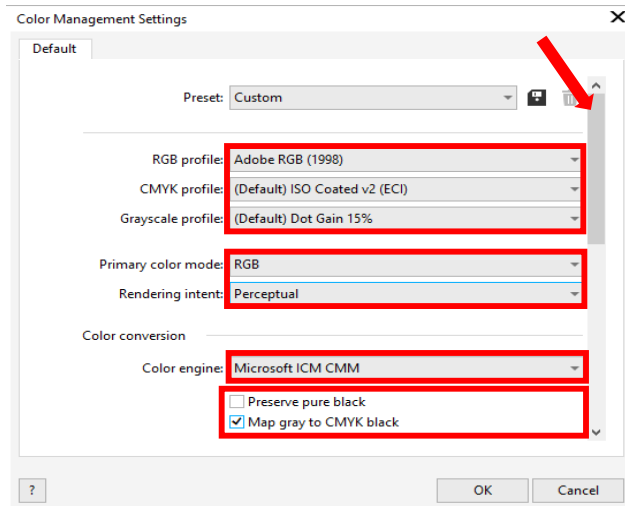
Click on "Color Management...".

www.sublisplash.de

*Alle Warenzeichen, Produktnamen und Logos sind Eigentum der jeweiligen Besitzer.
Alle hier nicht ausdrücklich gewährten Rechte bleiben vorbehalten.

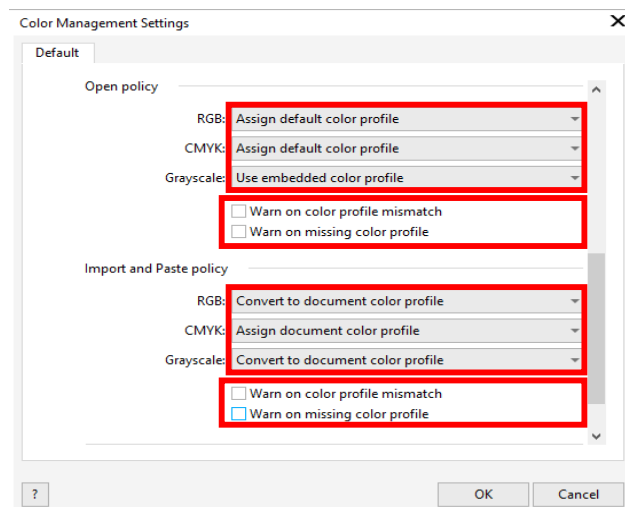
Sublisplash®

Colour in Motion



Take the settings **exactly** as you see them in this screenshot.

As the entire content cannot be displayed at once in the window, you have to **scroll down** (marked with an arrow) until you see “**Open policy**” as the topmost entry of the window.



Here again, take the settings **exactly** as you see them in this screenshot.

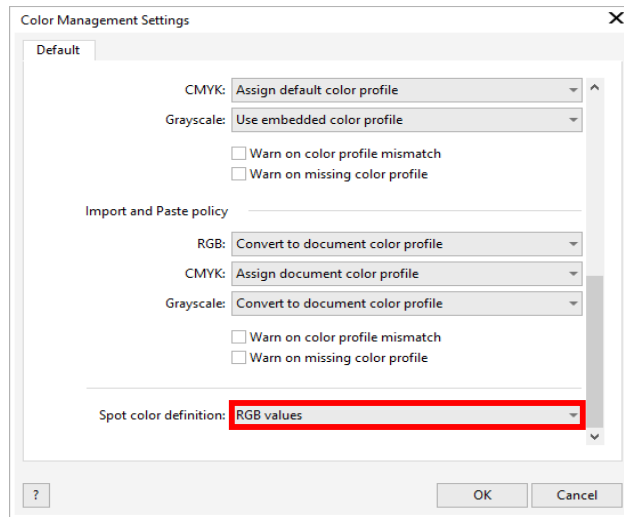
Scroll down to the very end.

www.sublisplash.de

**Alle Warenzeichen, Produktnamen und Logos sind Eigentum der jeweiligen Besitzer.
Alle hier nicht ausdrücklich gewährten Rechte bleiben vorbehalten.*

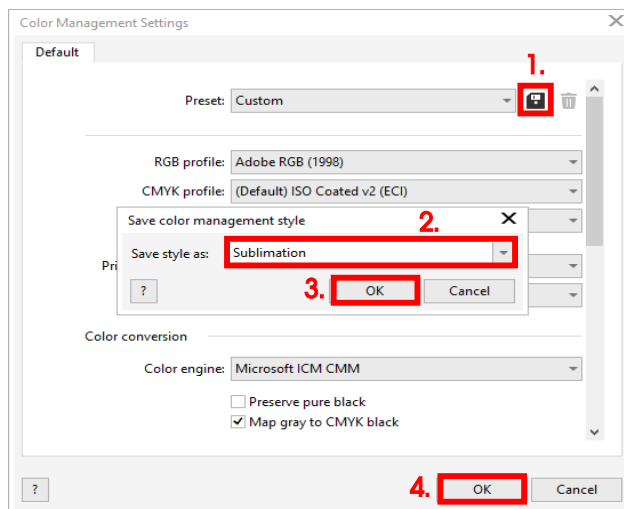
Sublisplash®

Colour in Motion



And finally, take the settings **exactly** as you see them in this screenshot.

Now **scroll up** to the top.



1. To save your settings, click on the **disk icon**.

2. In the **"Save color management style"** window, give your settings an obvious name (we recommend **"Sublimation"**)!

3. Click on **"OK"** closes the window.

4. Click **"OK"** to close the **"Colour Management Settings"** window.

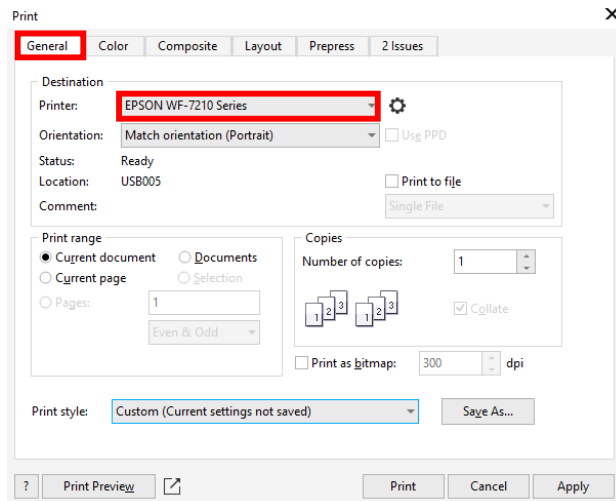
www.sublisplash.de

**Alle Warenzeichen, Produktnamen und Logos sind Eigentum der jeweiligen Besitzer.
Alle hier nicht ausdrücklich gewährten Rechte bleiben vorbehalten.*

7. Loading a file and assigning the ICC Color Profile in CorelDraw

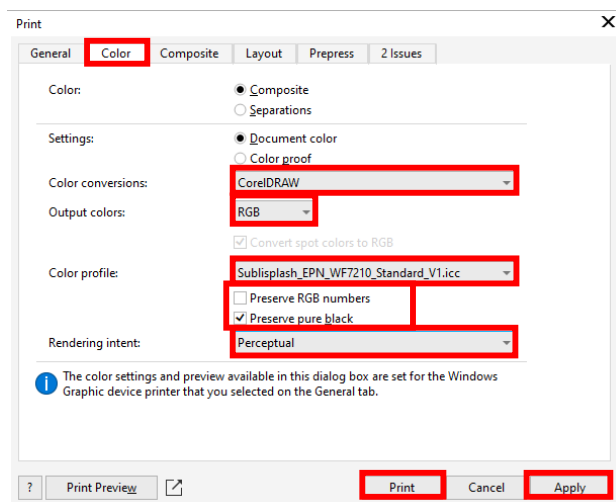
Start CorelDraw and open any file.

Click on **"File"** in the menu bar and then in the drop down menu on **"Print..."** to call up the CorelDraw **"Print"** dialogue.



In the tab **"General"**, select your **"Epson WF-7210 Series"** in the printer field.

Now click on the tab **"Color"**.



Take the settings exactly as you see them in this screenshot.

Make sure that our current ICC Color Profile is selected in the **"Color profile:"** field.

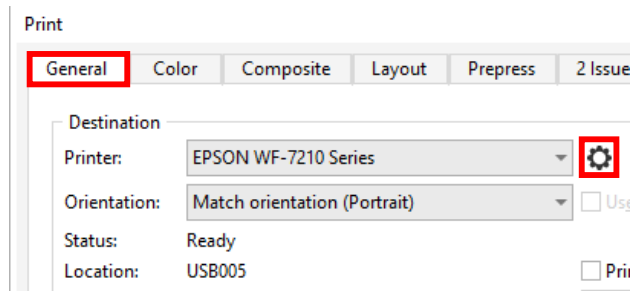
Click on **"Apply"** to accept the settings.

To print now, click **"Print"**.

Practical tip: Before you print, we recommend that you check to ensure that the print preset currently set in the printer driver is correct.

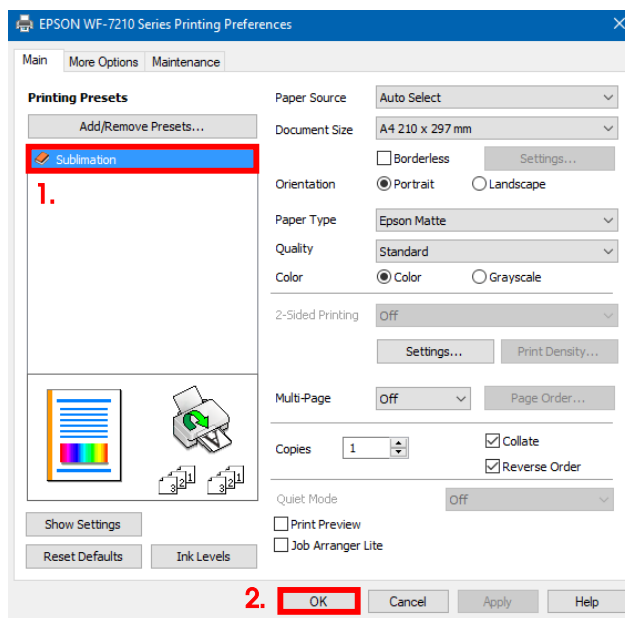
Sublisplash®

Colour in Motion



Click on the tab "General".

Click on the "Gear" icon to call up the "EPSON WF-7210 Series Printing Preferences".



1. Under "Printing Presets" click on the setting "Sublimation" (shown in blue).

2. Confirm your selection by clicking on "OK". The "EPSON WF-7210 Series Printing Preferences" window closes.

Place a few sheets of **TexPrint-DT** (was previously called TexPrint-R) paper into the paper tray of the printer with the printed side facing up.



By clicking on "Print" you start the printout.

You have now completed the initial installation for your Epson WF-7210 (Modified) printer with **Sublisplash EPN+ inks** and the initial setup for CorelDraw (from X5).

Should you need help in selecting or checking these settings, we have provided the instructions "Integrating Color Profile Epson WF7210 – CorelDraw(from X5)_EPN+_ EN" on our Sublisplash website in the section "Instructions for Epson printers".

www.sublisplash.de

**Alle Warenzeichen, Produktnamen und Logos sind Eigentum der jeweiligen Besitzer.
Alle hier nicht ausdrücklich gewährten Rechte bleiben vorbehalten.*