

Sublisplash®

Colour in Motion

Initial Setup Epson WF-C5290BA with Sublisplash EPN+ inks CorelDraw (from X5)

Note: Please check the filling level of the Waste Ink Tank **regularly** and empty it if necessary. We do not assume any liability for consequential damages due to non-observance!

1. Initial ink fill / Initialization

ATTENTION: As the printer is set to "Shipping Setting", it will perform an initialization when switched on for the first time. **Therefore, do not connect the printer to the power supply yet!** In the course of the manual you will be asked to **empty** the Waste Ink Tank at several points. Please follow these instructions.

Unpack the printer and remove all shipping protection elements (blue).

IMPORTANT: Remove the entire ink cartridge container, **including the orange shipping protection elements** (and tape!), and store them in a safe place. These items will be necessary should you need to transport or ship the printer at a later date!



The next step is to fill the empty cartridges supplied. When filling the cartridges, it is essential to fill the **correct** ink colour in the **corresponding** colour tank! The empty cartridges are marked with a sticker indicating the colour to be used. The colour abbreviations are as follows:

K = (Black), C = (Cyan), M = (Magenta), Y = (Yellow)

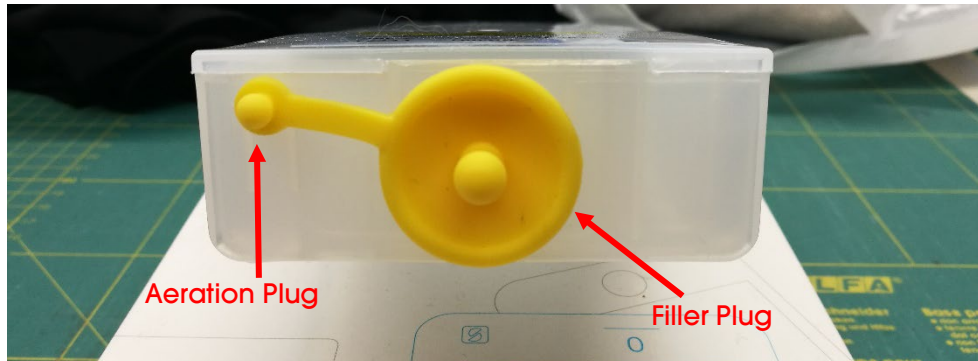
www.sublisplash.de

*Alle Warenzeichen, Produktnamen und Logos sind Eigentum der Jeweiligen Besitzer.
Alle hier nicht ausdrücklich gewährten Rechte bleiben vorbehalten.

Sublisplash®

Colour in Motion

To fill the individual cartridges, remove the **filler plug** and the **aeration plug**. Fill the cartridge with 125ml Sublisplash EPN+ ink of the correct colour. After filling the cartridge, close the fill hole with the filler plug.



In order to allow the air to escape and the ink to 'calm down', hold the cartridge upright after filling (**aeration plug still removed!**) and shake it gently about **10 times**. Leave the cartridge upright for about **5 minutes**.



This image shows the filling process using the colour **YELLOW**. Please fill the remaining cartridges accordingly.

www.sublisplash.de

**Alle Warenzeichen, Produktnamen und Logos sind Eigentum der jeweiligen Besitzer.
Alle hier nicht ausdrücklich gewährten Rechte bleiben vorbehalten.*

Sublisplash®

Colour in Motion

The filled cartridges can now be inserted into the corresponding slots of the printer and locked by applying light pressure. If you want to take out the cartridges for refilling, a light pressure is sufficient and the cartridge is unlocked by the built-in spring, allowing it to be removed.

Please make sure that the correct ink cartridge is in the respective slot and that the aeration plugs are removed!



After checking once again that all transport locks have been removed, the printer can be connected to the power supply and switched on. The initialization routine is started **automatically**.

After completion of the initialization routine the Waste Ink Tank MUST be emptied!

www.sublisplash.de

*Alle Warenzeichen, Produktnamen und Logos sind Eigentum der Jeweiligen Besitzer.
Alle hier nicht ausdrücklich gewährten Rechte bleiben vorbehalten.

Sublisplash®

Colour in Motion

2. Installing Printer Software

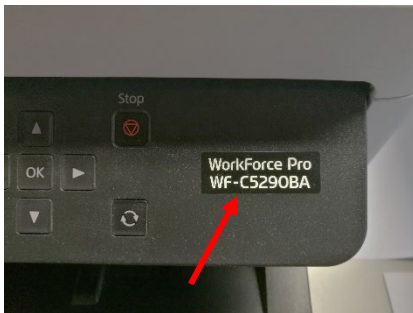
Download the appropriate driver for your operating system directly from our Sublisplash page and save it.

Link to driver version Win10 64bit:

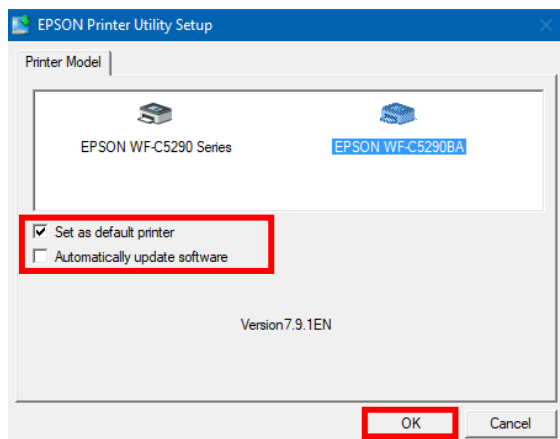
<https://sublisplash.printequipment.de/driver/5290/epson650443eu.exe>

Before you start the setup please look on the front of the printer for the **model name**. We need this for correct selection of the printer in the setup.

Start the setup by double clicking on the EXE file. After a short time the following window appears:



Follow the instructions. Once the setup is complete we recommend restarting your computer.



Select the appropriate printer by mouse click.

If the printer is to be set up as default printer, leave the check mark at "Set as default printer". Otherwise remove the check mark.

The "Automatically update software" check mark **must be REMOVED!**

Click on "OK" to continue with the setup.

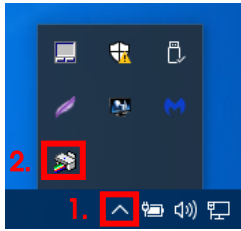
www.sublisplash.de

**Alle Warenzeichen, Produktnamen und Logos sind Eigentum der Jeweiligen Besitzer.
Alle hier nicht ausdrücklich gewährten Rechte bleiben vorbehalten.*

Sublisplash®

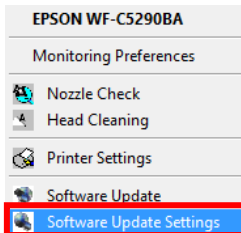
Colour in Motion

The Epson software automatically searches for updates within a specified period. As this can lead to problems, we turn it off as follows:

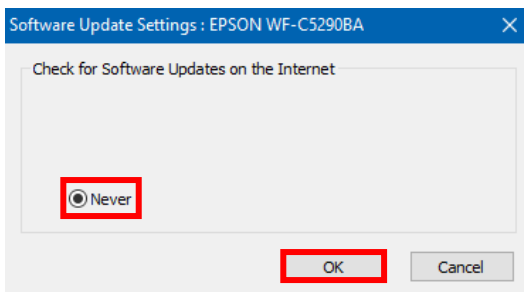


1. Click on the "UP Arrow" in the status bar.

2. Right click on the "Status Monitor" icon that corresponds to your printer.



Right click on "Software Update Settings".



Click on the option "Never".

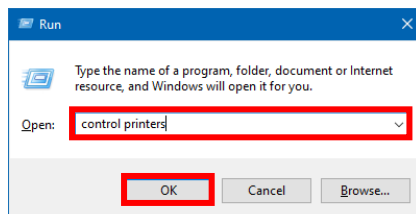
Confirm by clicking on "OK".

3. Configuring printer driver

3.1 To view print settings:



Press the "Windows" + "R" keys simultaneously.



In the "Open:" field enter "control printers".

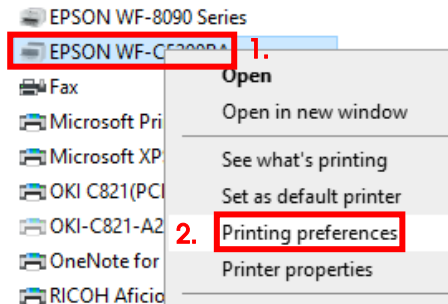
Click on "OK".

www.sublisplash.de

**Alle Warenzeichen, Produktnamen und Logos sind Eigentum der jeweiligen Besitzer.
Alle hier nicht ausdrücklich gewährten Rechte bleiben vorbehalten.*

Sublisplash®

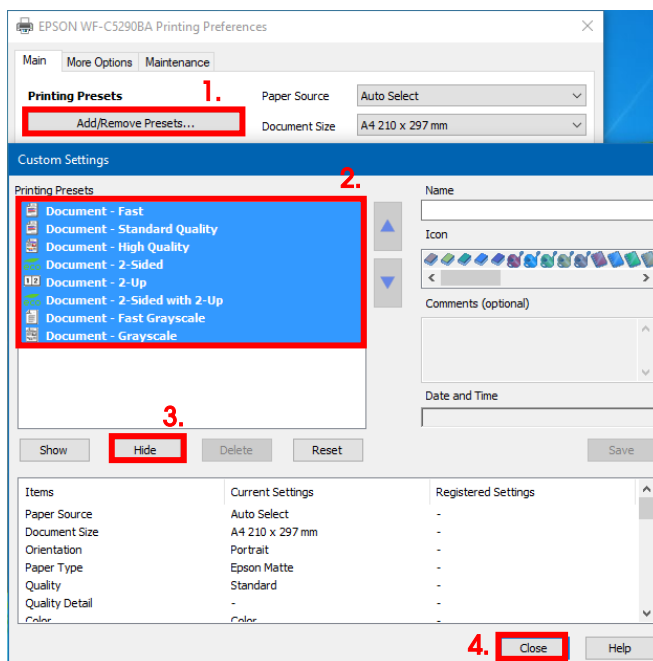
Colour in Motion



1. Right click on "EPSON WF-C5290BA".

2. Click on "Printing preferences".

3.2 Configure and save print settings:



1. Click on "Add/Remove Presets...".

2. Select all entries. Click on the first entry, hold down the "Shift" key and click on the last entry.

3. Click on "Hide".

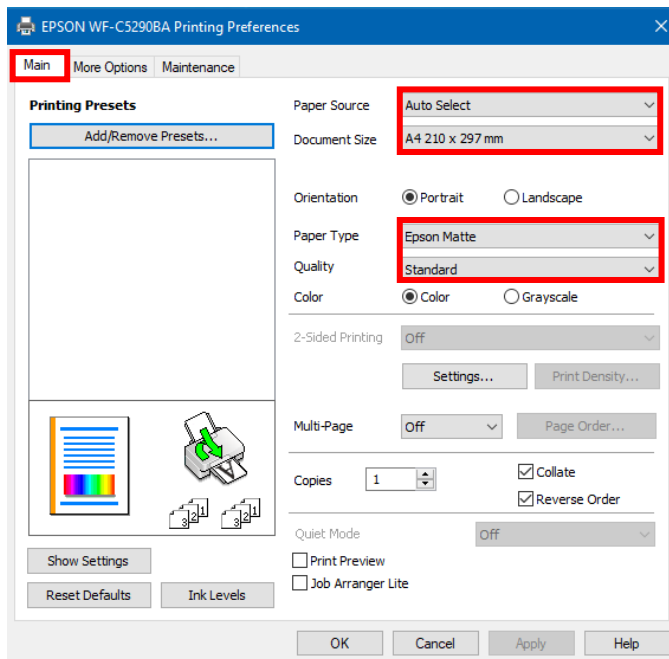
4. Click on "Close".

www.sublisplash.de

**Alle Warenzeichen, Produktnamen und Logos sind Eigentum der jeweiligen Besitzer.
Alle hier nicht ausdrücklich gewährten Rechte bleiben vorbehalten.*

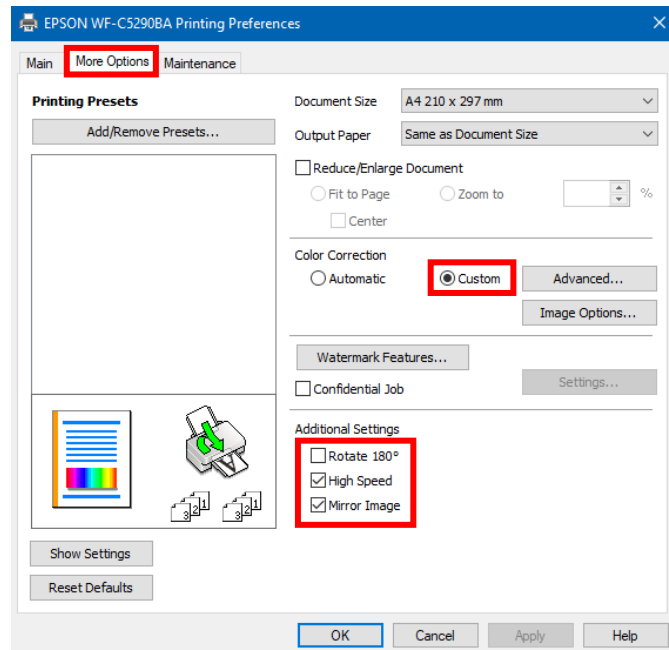
Sublisplash®

Colour in Motion



In the tab "Main", please set the following settings:

Paper Source:	Auto Select
Document Size:	A4 210 x 297 mm
Orientation:	Portrait
Paper Type:	Epson Matte
Quality:	Standard
Color:	Color



In the tab "More Options" set the following settings:

Color Correction:	Custom
-------------------	--------

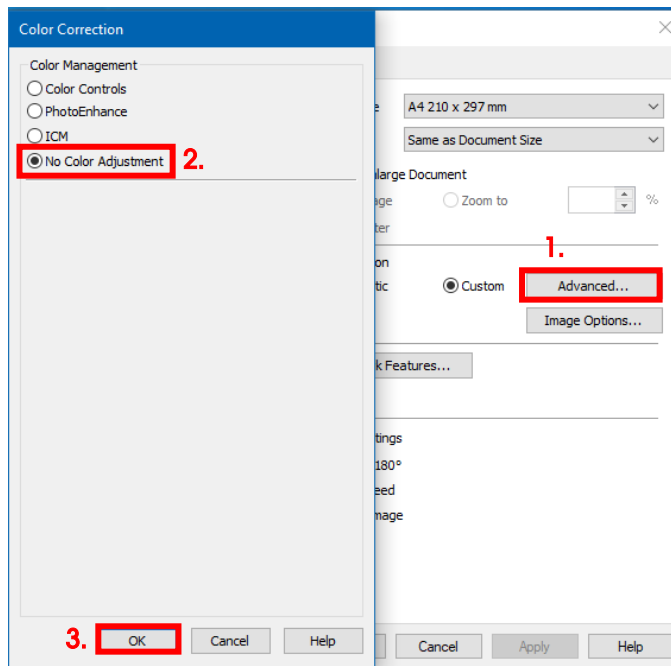
Check "High Speed".
Check "Mirror Image".

www.sublisplash.de

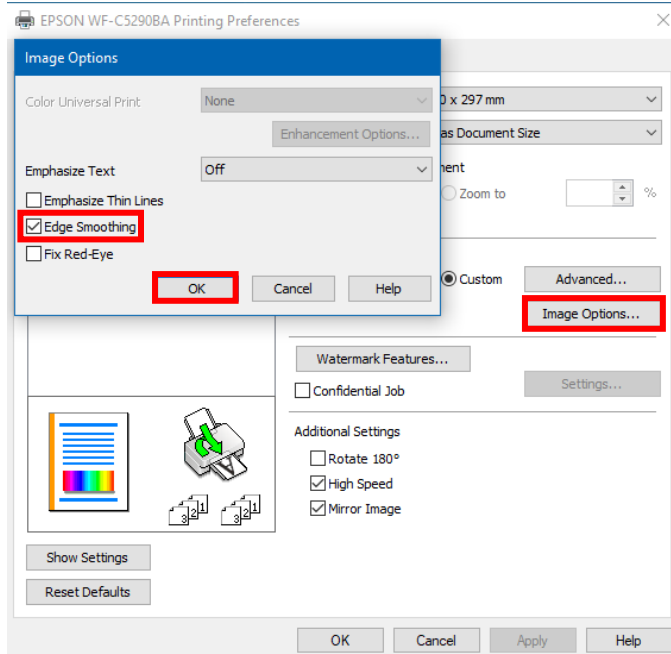
**Alle Warenzeichen, Produktnamen und Logos sind Eigentum der Jeweiligen Besitzer.
Alle hier nicht ausdrücklich gewährten Rechte bleiben vorbehalten.*

Sublisplash®

Colour in Motion



1. Click on "Advanced...".
2. Click on the option "No Color Adjustment".
3. Confirm by clicking on "OK".



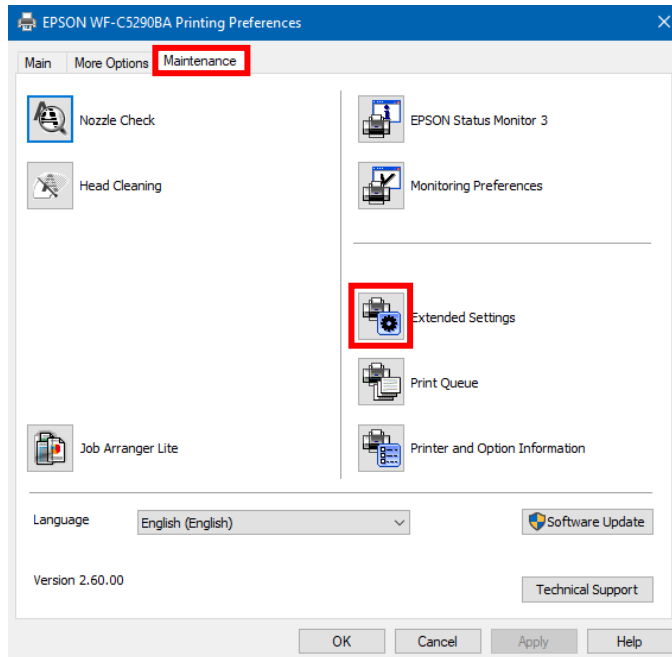
1. Click on "Image Options...".
2. Check "Edge Smoothing".
3. Confirm by clicking on "OK".

www.sublisplash.de

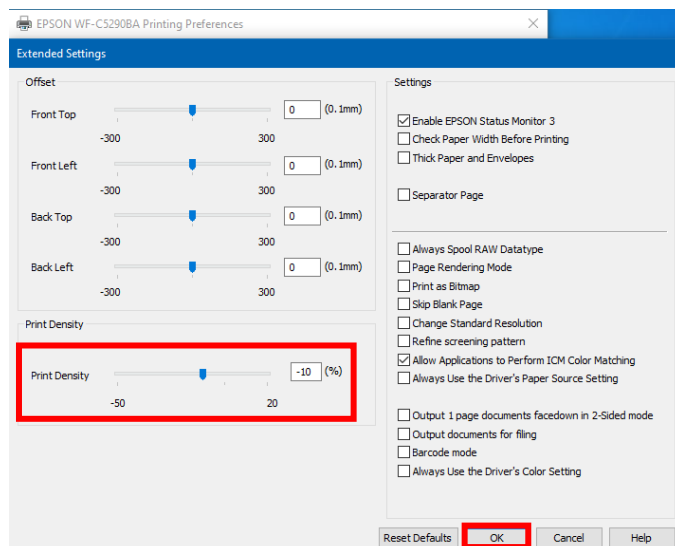
**Alle Warenzeichen, Produktnamen und Logos sind Eigentum der jeweiligen Besitzer.
Alle hier nicht ausdrücklich gewährten Rechte bleiben vorbehalten.*

Sublisplash®

Colour in Motion



In the tab "Maintenance" click on the button "Extended Settings".



Set the value for "Print Density" to "-10".

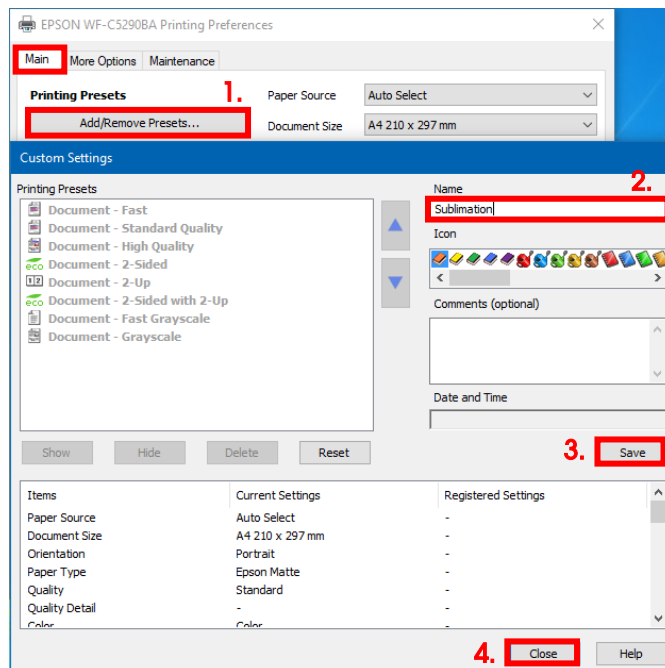
Confirm your changes by clicking on "OK".

www.sublisplash.de

**Alle Warenzeichen, Produktnamen und Logos sind Eigentum der jeweiligen Besitzer.
Alle hier nicht ausdrücklich gewährten Rechte bleiben vorbehalten.*

Sublisplash®

Colour in Motion



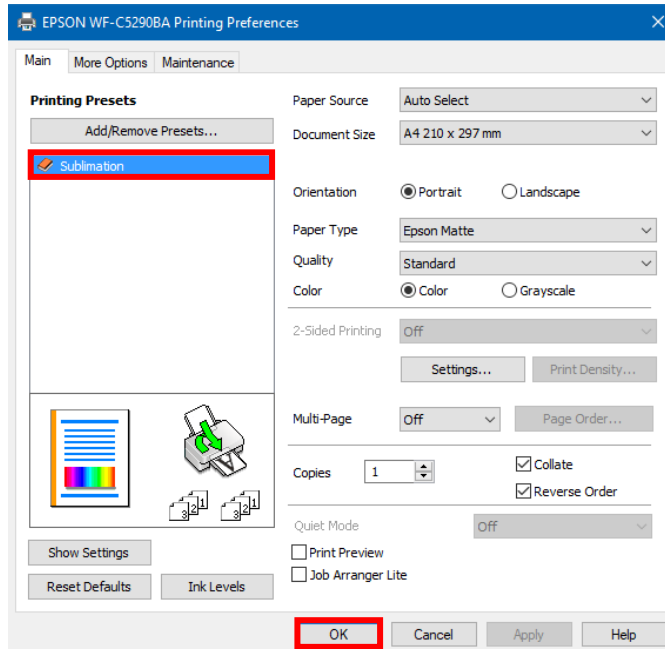
Click on the tab "Main".

1. Click on "Add/Remove Presets...".

2. Enter a name for your preferences.

3. Click on "Save" to save your preferences under the given name.

4. Click on "Close" to return to the "Main" screen.



Clicking on the name activates your preferences.

Click "OK" to close the window.

www.sublisplash.de

**Alle Warenzeichen, Produktnamen und Logos sind Eigentum der jeweiligen Besitzer.
Alle hier nicht ausdrücklich gewährten Rechte bleiben vorbehalten.*

Sublisplash®

Colour in Motion

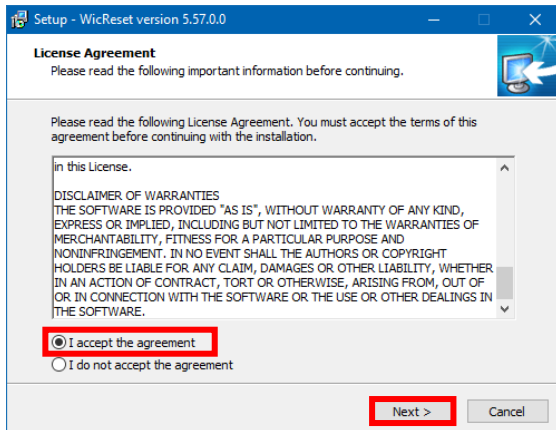
4. Install WIC Reset Utility and start up the printer

Download the WIC Reset Utility directly from the homepage and save it on your computer.

Link to the WIC Reset Utility:

<http://www.2manuals.com/WIC/wicreset.exe>

Start the setup by double clicking on the EXE file.



Click on the option "I accept the agreement".

Click on "Next >" to close the window.

Follow the setup instructions until you come to this window:



Make sure that "Launch WicReset" is checked.

Click on "Finish" to end setup and start the WIC Reset Utility.

The WIC Reset Utility will check if a newer version is available. If so, the new version will be installed and the WIC Reset Utility will be closed and restarted.

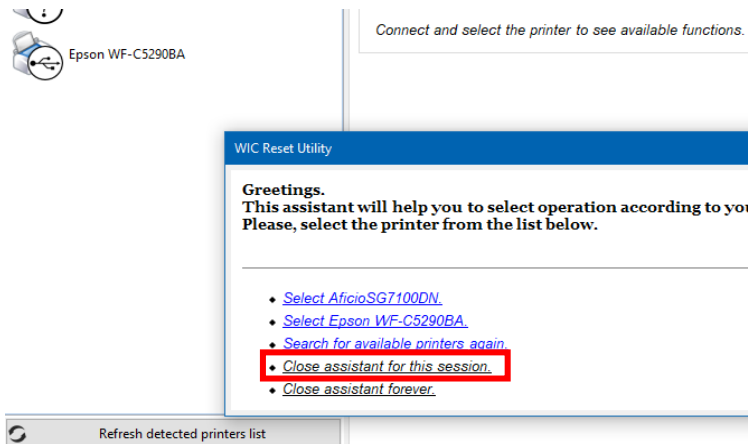
www.sublisplash.de

**Alle Warenzeichen, Produktnamen und Logos sind Eigentum der Jeweiligen Besitzer.
Alle hier nicht ausdrücklich gewährten Rechte bleiben vorbehalten.*

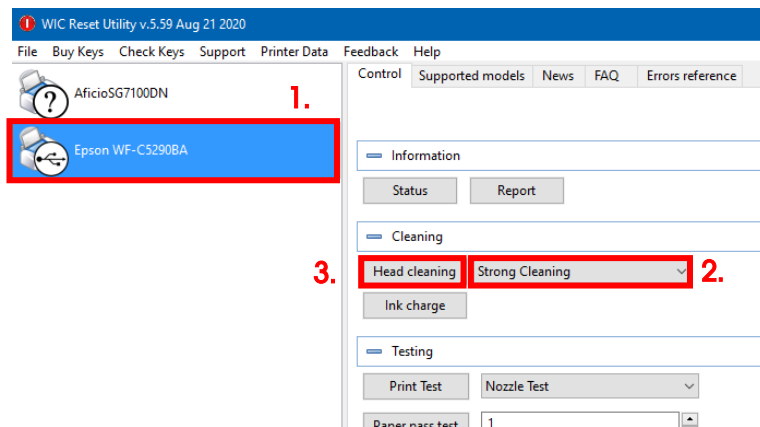
Sublisplash®

Colour in Motion

The following window appears right after starting WIC Reset Utility:



Click on "Close assistant for this session."



1. Click on "Epson WF-C5290BA".

2. Select "Strong Cleaning" in the options.

3. Click on "Head cleaning". You have to repeat this step a total of **4 times!**

Wait until each run is complete before starting the next one.

After the **fourth run** we now check whether the printer's ink system has been completely filled (and thus the storage fluid has been removed from the system).

Before the next steps are carried out, it is ABSOLUTELY necessary to empty the Waste Ink Tank!

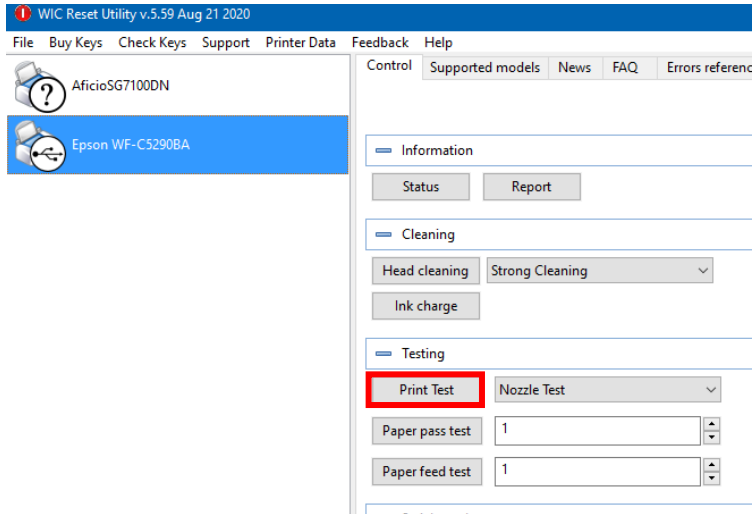
www.sublisplash.de

**Alle Warenzeichen, Produktnamen und Logos sind Eigentum der Jeweiligen Besitzer.
Alle hier nicht ausdrücklich gewährten Rechte bleiben vorbehalten.*

Sublisplash®

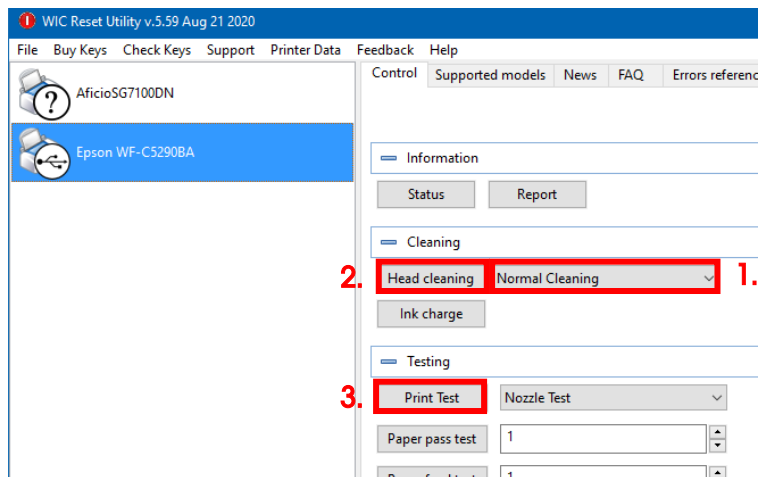
Colour in Motion

Place a few sheets of **A4 paper** in the paper tray (normal copy paper is sufficient).



Click on **"Print Test"** to print a nozzle check.

If the nozzle check is not complete, you must now clean the print head.



1. Select **"Normal Cleaning"** in the options.
2. Click on **"Head cleaning"**. Wait until the process is finished.
3. Click on **"Print Test"** to print a nozzle check.

If the nozzle check is not correct, repeat steps 2-3 a maximum of **3 times**. Allow the printer to sit for **about an hour** so that the ink can settle.

Afterwards, print a nozzle check (step 3) and repeat step 2 and 3 if necessary.

The WIC Reset Utility can now be closed.

Before the next steps are carried out, it is ABSOLUTELY necessary to empty the Waste Ink Tank!

www.sublisplash.de

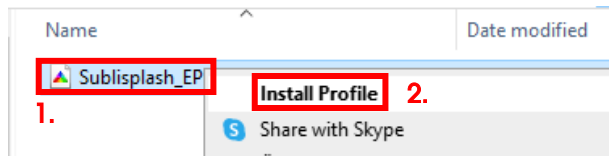
**Alle Warenzeichen, Produktnamen und Logos sind Eigentum der jeweiligen Besitzer.
Alle hier nicht ausdrücklich gewährten Rechte bleiben vorbehalten.*

Sublisplash®

Colour in Motion

5. Download and install ICC color profile

Go to <https://www.sublisplash.com/de/downloads/> and download the appropriate ICC color profile for your printer. **ATTENTION:** You have to select the ICC color profile for **EPN+ inks!**

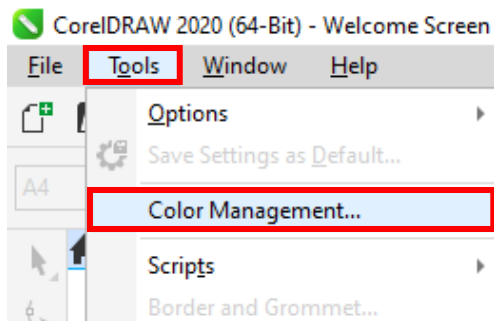


1. Right click on the ICC color profile.
2. Click on "Install Profile" in the window.

The window closes and the ICC color profile is installed on your computer. No status window or confirmation message will be displayed.

Tip: Windows stores its ICC color profiles in the folder "C:\windows\system32\spool\drivers\color".

6. Create Color Management Setting "Sublimation" in CorelDraw



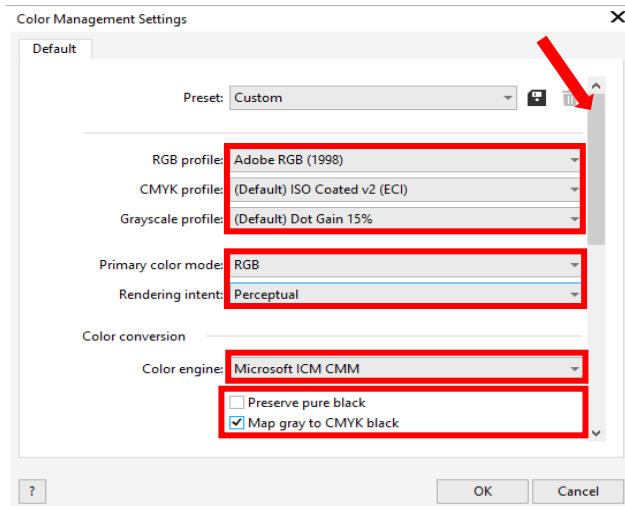
- Start CorelDraw
1. Click on "Tools" in the menu bar.
 2. Click on "Color Management...".

www.sublisplash.de

**Alle Warenzeichen, Produktnamen und Logos sind Eigentum der Jeweiligen Besitzer.
Alle hier nicht ausdrücklich gewährten Rechte bleiben vorbehalten.*

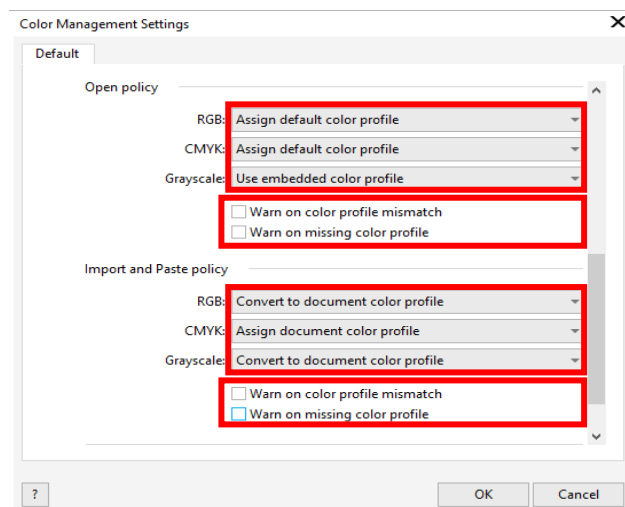
Sublisplash®

Colour in Motion



Take the settings **exactly** as you see them in this screenshot.

As the entire content cannot be displayed at once in the window, you have to **scroll down** (marked with an arrow) until you see "Open policy" as the topmost entry of the window.



Here again, take the settings **exactly** as you see them in this screenshot.

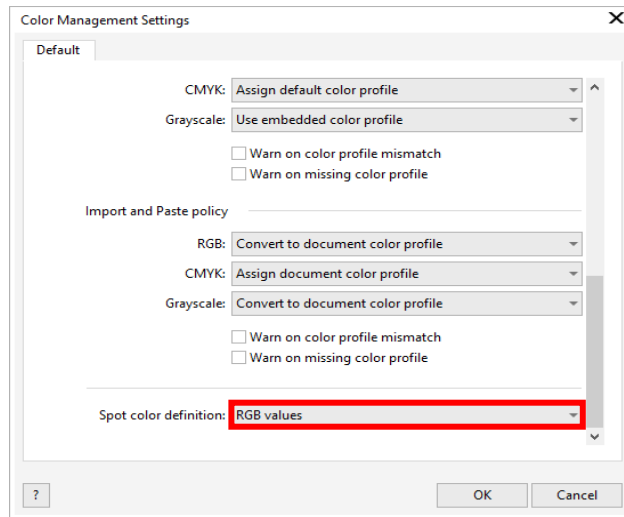
Scroll down to the very end.

www.sublisplash.de

**Alle Warenzeichen, Produktnamen und Logos sind Eigentum der Jeweiligen Besitzer.
Alle hier nicht ausdrücklich gewährten Rechte bleiben vorbehalten.*

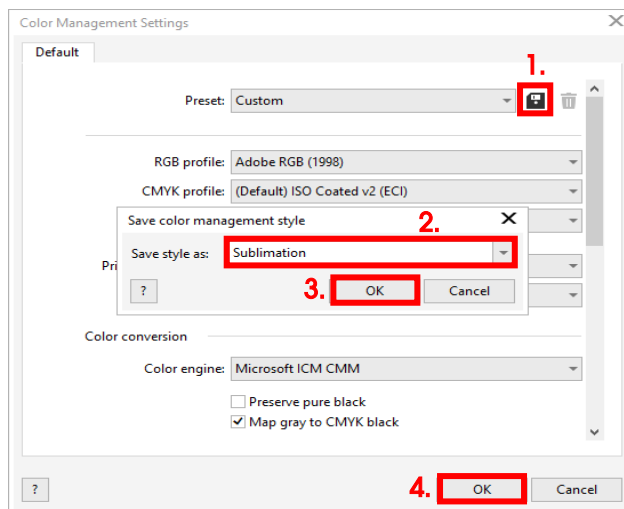
Sublisplash®

Colour in Motion



And finally, take the settings **exactly** as you see them in this screenshot.

Now **scroll up** to the top.



1. To save your settings, click on the **disk icon**.

2. In the **“Save color management style”** window, give your settings an obvious name (we recommend **“Sublimation”**)!

3. Click on **“OK”** closes the window.

4. Click **“OK”** to close the **“Colour Management Settings”** window.

www.sublisplash.de

**Alle Warenzeichen, Produktnamen und Logos sind Eigentum der jeweiligen Besitzer.
Alle hier nicht ausdrücklich gewährten Rechte bleiben vorbehalten.*

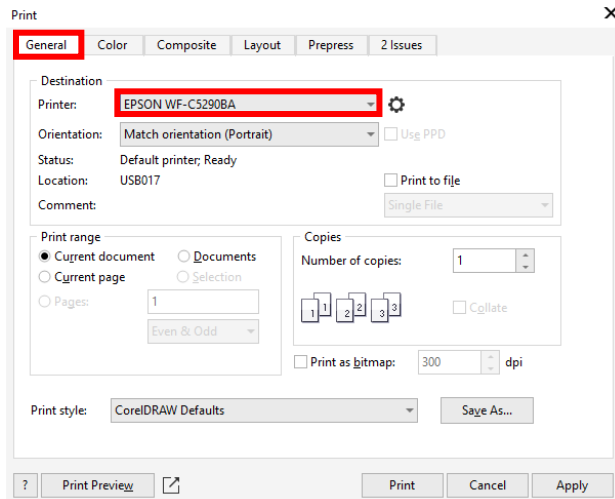
Sublisplash®

Colour in Motion

7. Loading a file and assigning the ICC Color Profile in CorelDraw

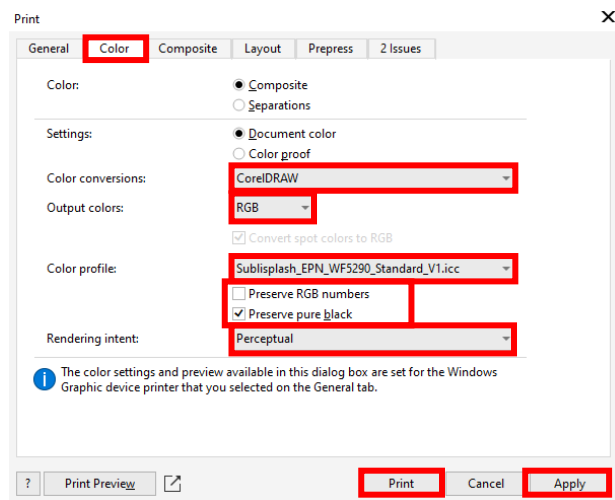
Start CorelDraw and open any file.

Click on **"File"** in the menu bar and then in the drop down menu on **"Print..."** to call up the CorelDraw **"Print"** dialogue.



In the tab **"General"**, select your **"Epson WF-C5290BA"** in the printer field.

Now click on the tab **"Color"**.



Take the settings exactly as you see them in this screenshot.

Make sure that our current ICC Color Profile is selected in the **"Color profile:"** field.

Click on **"Apply"** to accept the settings.

To print now, click **"Print"**.

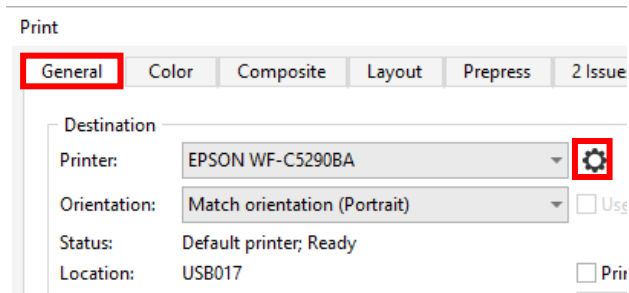
Practical tip: Before you print, we recommend that you check to ensure that the print preset currently set in the printer driver is correct.

www.sublisplash.de

**Alle Warenzeichen, Produktnamen und Logos sind Eigentum der jeweiligen Besitzer.
Alle hier nicht ausdrücklich gewährten Rechte bleiben vorbehalten.*

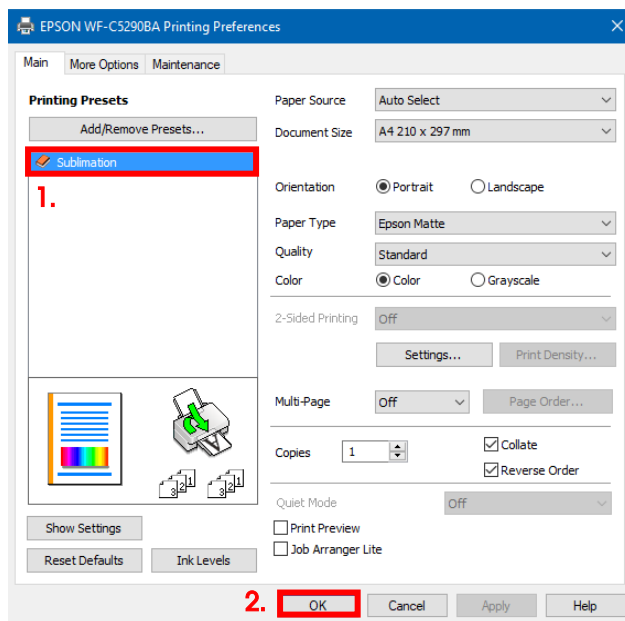
Sublisplash®

Colour in Motion



Click on the tab "General".

Click on the "Gear" icon to call up the "EPSON WF-C5290BA Printing Preferences".



1. Under "Printing Presets" click on the setting "Sublimation" (shown in blue).

2. Confirm your selection by clicking on "OK". The "EPSON WF-C5290BA Printing Preferences" window closes.

Place a few sheets of **TexPrint-DT** (was previously called TexPrint-R) paper into the paper tray of the printer with the printed side facing up.



By clicking on "Print" you start the printout.

You have now completed the initial installation for your Epson WF-C5290BA printer with **Sublisplash EPN+** inks and the initial setup for CorelDraw (from X5).

Should you need help in selecting or checking these settings, we have provided the instructions "Integrating Color Profile Epson WF5290BA – CorelDraw(from X5)_EPN+_EN" on our Sublisplash website in the section "Instructions for Epson printers".

www.sublisplash.de

**Alle Warenzeichen, Produktnamen und Logos sind Eigentum der jeweiligen Besitzer.
Alle hier nicht ausdrücklich gewährten Rechte bleiben vorbehalten.*