

Sublisplash®

Colour in Motion

Initial setup Epson ET-2856 series with Sublisplash EPN + inks Adobe Photoshop

Use this printer only with Sublisplash ink, do not use original ink!

1. Printer setup / Filling the printer for the first time / Initialising

Follow the setup steps as described in the leaflet "ET-2850 Series EN Start Here".

To ensure proper operation, a few settings must be made on the printer. The following is a basic introduction to the operation of the printer:

1. Control panel / LCD display



Description / Meaning of the control panel buttons:

- 1: Displays the start page.
- 2: LCD display. Displays menus and messages. Use the buttons on the control panel to select a menu or to make settings.
- 3: Returns to the previous screen.
- 4: Use the buttons ▲, ▼, ◀, ▶, to move the focus to the target and then press OK to open the selected menu, to make adjustments or confirm settings.
- 5: Stops the current operation.

www.sublisplash.de

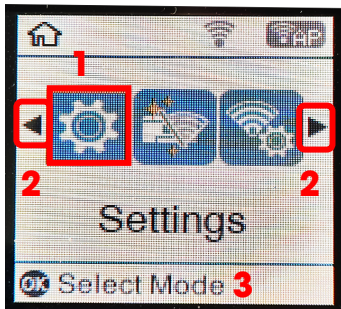
*Alle Warenzeichen, Produktnamen und Logos sind Eigentum der jeweiligen Besitzer.
Alle hier nicht ausdrücklich gewährten Rechte bleiben vorbehalten.

Sublisplash®

Colour in Motion

Instructions for LCD display:

Menus and messages are shown on the LCD display. You can select a menu or a setting by pressing the buttons ▲▼◀▶.



The arrows ◀ und ▶ (2), when displayed, can be used to scroll through the individual menu icons or settings can be scrolled through. On the start screen, the currently selected menu item is shown framed (1).

After selecting a function / menu item, the relevant buttons are displayed (3).

To set up your printer, please select the menu item „**Settings**” and confirm your selection with the key „OK”.

On the next page you will find the parameters that need to be changed.

Tip: For simplicity's sake, print out the page and make the settings on the printer.

www.sublisplash.de

*Alle Warenzeichen, Produktnamen und Logos sind Eigentum der jeweiligen Besitzer.
Alle hier nicht ausdrücklich gewährten Rechte bleiben vorbehalten.

Sublisplash®

Colour in Motion

Settings for Epson ET-2856

Menu Settings:

Printer Setup (2/9)

Paper Source Settings (1/9)

Paper Setting (1/4)

Paper Size (1/2) **A4**

Paper Type (2/2) **Plain Paper**

A4/Letter Auto Switching (2/4) **Off**

Error Notice (3/4)

Paper Size Notice (1/2) **Off**

Paper Type Notice (2/2) **Off**

Paper Setup Auto Display (4/4) **Off**

Quiet Mode (2/9) **Off**

Power Off Settings (3/9)

Power Off If Inactive (1/2) **Off**

Power Off If Disconnected (2/2) **Off**

Sleep Timer (6/9) **20 min**

Auto Error Solver (7/9) **Off**

Ink Drying Time (8/9) **Long**

PC Connection via USB (9/9) **Enable**

www.sublisplash.de

*Alle Warenzeichen, Produktnamen und Logos sind Eigentum der jeweiligen Besitzer.
Alle hier nicht ausdrücklich gewährten Rechte bleiben vorbehalten.

Sublisplash®

Colour in Motion

2. Installing Printer Software

Download the appropriate driver for your printer directly from the Epson Homepage and save it.

Download link to the Win10 driver (Win10 64bit):

<https://download.epson-europe.com/pub/download/6430/epson643085eu.exe>

Start the setup by double clicking on the EXE file.

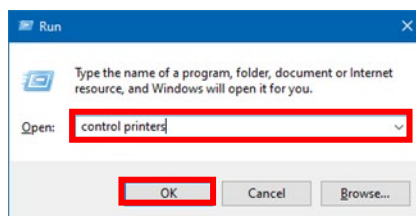
After a brief pause, the setup window appears. Follow the instructions. Once the setup is complete, we recommend restarting your computer.

3. Configuring the printer driver

3.1 To view print settings:



Press the "Windows" + "R" keys simultaneously.



In the "Open:" field enter "control printers".

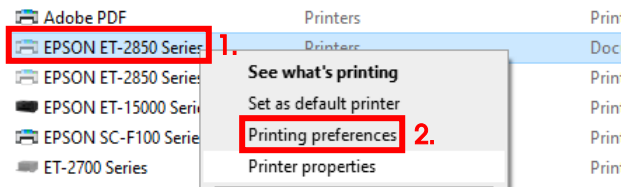
Click on "OK".

www.sublisplash.de

*Alle Warenzeichen, Produktnamen und Logos sind Eigentum der jeweiligen Besitzer.
Alle hier nicht ausdrücklich gewährten Rechte bleiben vorbehalten.

Sublisplash®

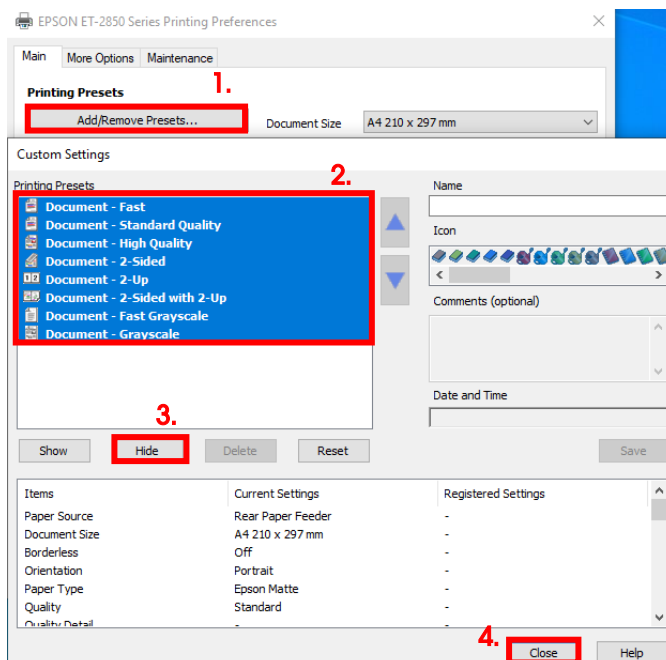
Colour in Motion



1. Right click on "EPSON ET-2850 Series".

2. Click on "Printing preferences".

3.2 Configure and save print settings:



1. Click on "Add/Remove Presets...".

2. Select all entries. Click on the first entry, hold down the "Shift" key and click on the last entry.

3. Click on "Hide".

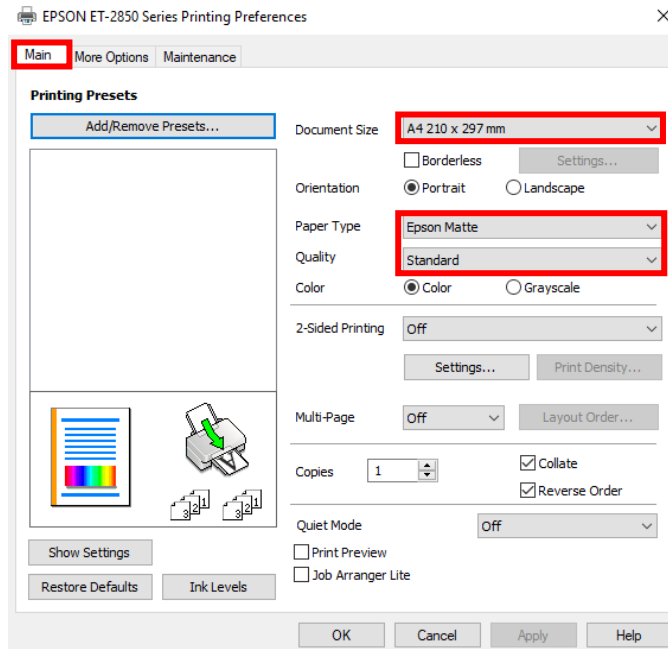
4. Click on "Close".

www.sublisplash.de

**Alle Warenzeichen, Produktnamen und Logos sind Eigentum der jeweiligen Besitzer.
Alle hier nicht ausdrücklich gewährten Rechte bleiben vorbehalten.*

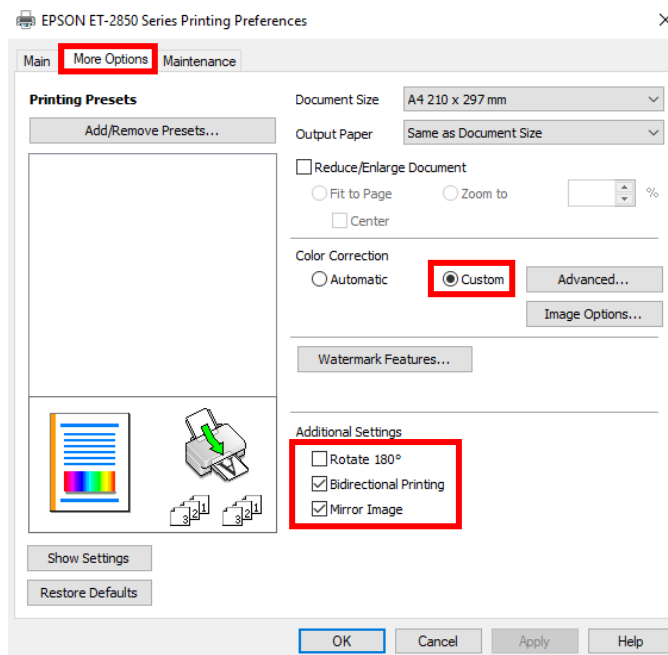
Sublisplash®

Colour in Motion



In the tab "Main", please set the following settings:

Document Size:	A4 297 x 210 mm
Orientation:	Portrait
Paper Type:	Epson Matte
Quality:	Standard
Color:	Color



In the tab "More Options" set the following settings:

Color Correction: Custom

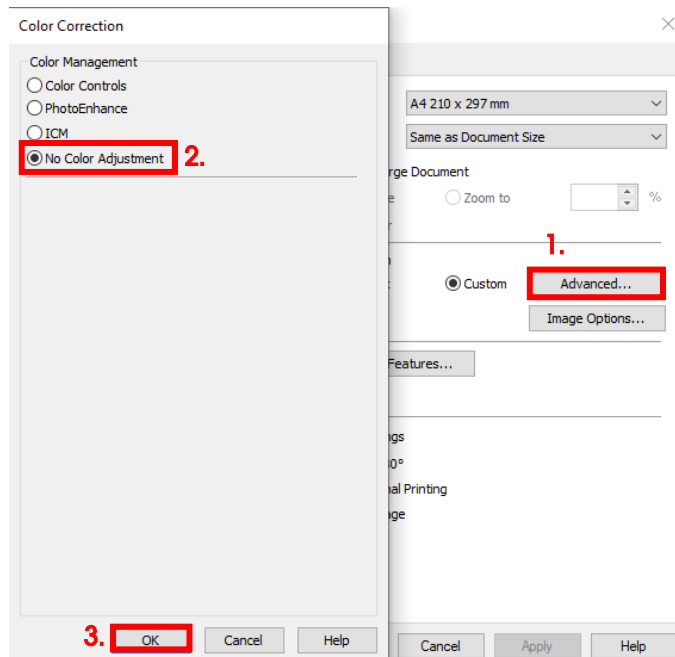
Check "Bidirectional Printing".
Check "Mirror Image".

www.sublisplash.de

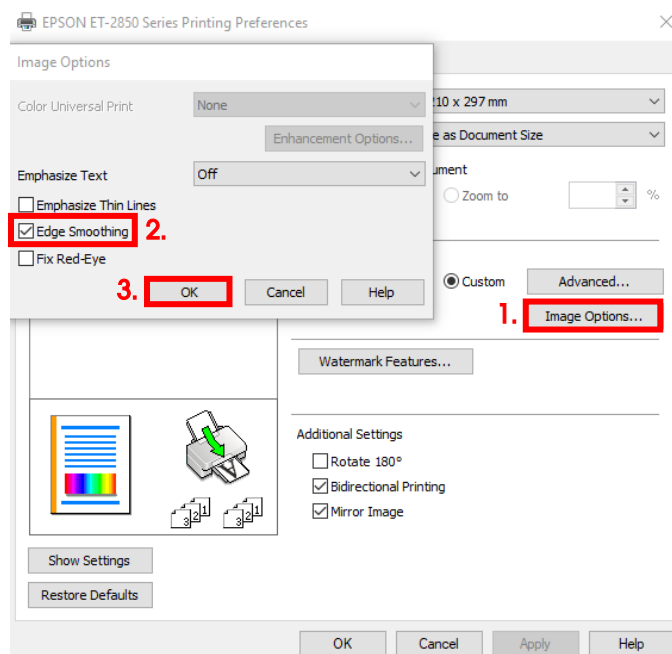
**Alle Warenzeichen, Produktnamen und Logos sind Eigentum der jeweiligen Besitzer.
Alle hier nicht ausdrücklich gewährten Rechte bleiben vorbehalten.*

Sublisplash®

Colour in Motion



1. Click on "Advanced...".
2. Click on the option "No Color Adjustment".
3. Confirm by clicking on "OK".



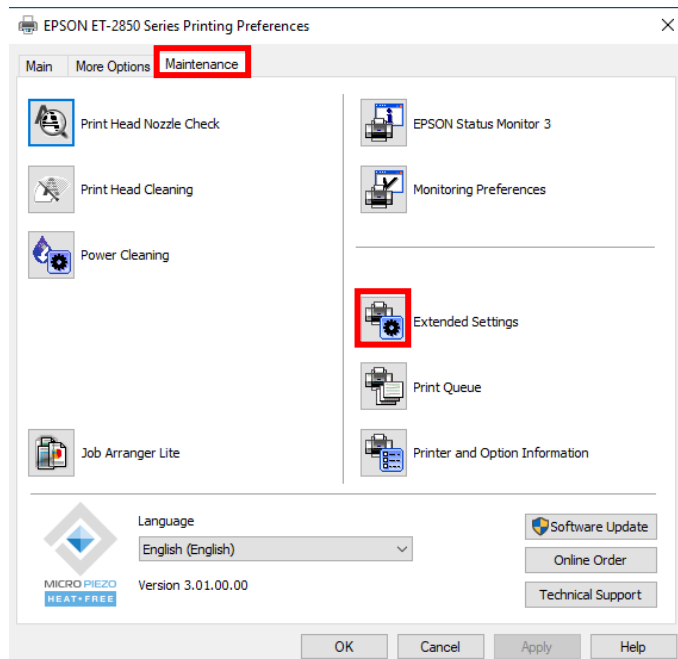
1. Click on "Image Options...".
2. Check "Edge Smoothing".
3. Confirm by clicking on "OK".

www.sublisplash.de

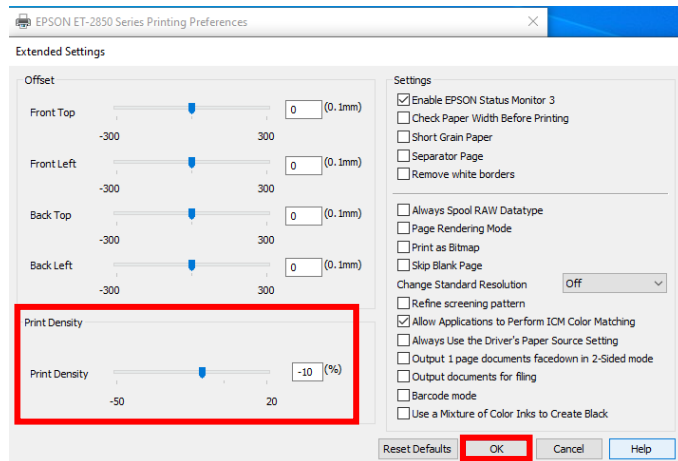
**Alle Warenzeichen, Produktnamen und Logos sind Eigentum der jeweiligen Besitzer.
Alle hier nicht ausdrücklich gewährten Rechte bleiben vorbehalten.*

Sublisplash®

Colour in Motion



In the tab "Maintenance" click on the button "Extended Settings".



Set the value for "Print Density" to "-10".

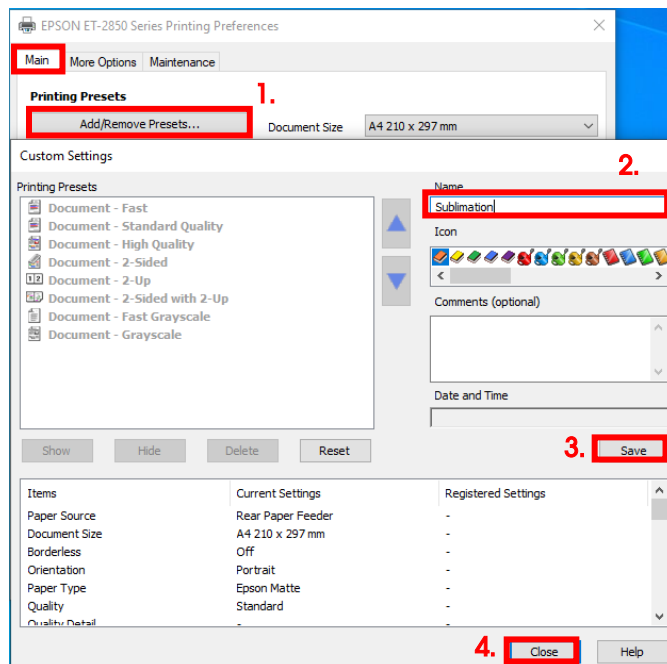
Confirm your changes by clicking on "OK".

www.sublisplash.de

**Alle Warenzeichen, Produktnamen und Logos sind Eigentum der jeweiligen Besitzer.
Alle hier nicht ausdrücklich gewährten Rechte bleiben vorbehalten.*

Sublisplash®

Colour in Motion



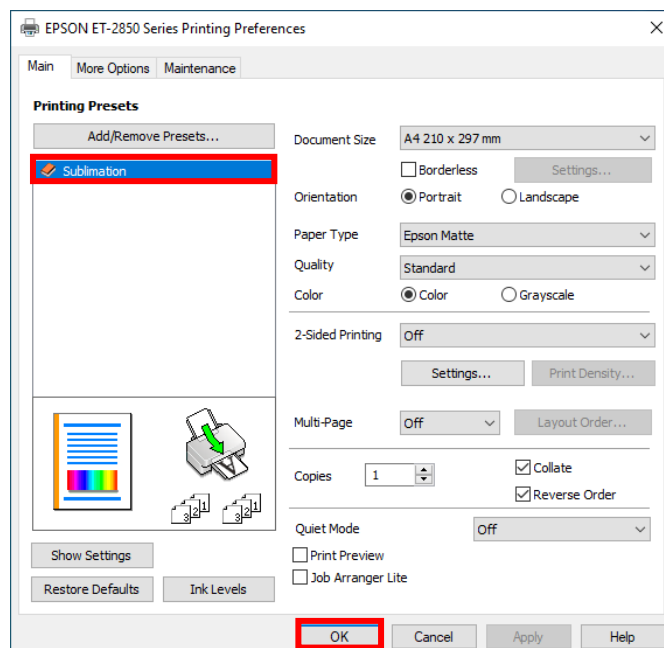
Click on the tab "Main".

1. Click on "Add/Remove Presets..." .

2. Enter a name for your preferences (we'll use "Sublimation" here).

3. Click on "Save" to save your preferences under the given name.

4. Click on "Close" to return to the "Main" screen.



Clicking on the name activates your preferences.

Click "OK" to close the window.

www.sublisplash.de

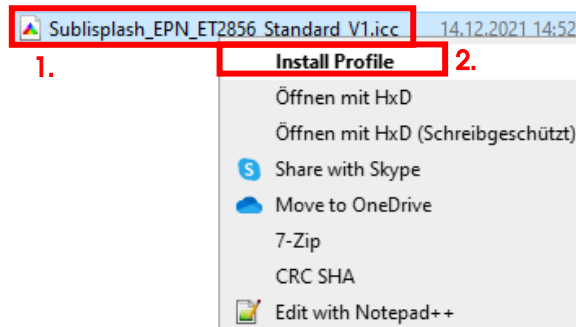
**Alle Warenzeichen, Produktnamen und Logos sind Eigentum der jeweiligen Besitzer.
Alle hier nicht ausdrücklich gewährten Rechte bleiben vorbehalten.*

Sublisplash®

Colour in Motion

4. Download and install ICC color profile

Go to <https://www.sublisplash.com/de/downloads/> and download the appropriate ICC color profile for your printer. **ATTENTION:** You have to select the ICC color profile for **EPN+ inks!**



1. Right click on the ICC color profile.

2. Click on "Install Profile" in the window.

The window closes and the ICC color profile is installed on your computer. No status window or confirmation message will be displayed.

Tip: Windows stores its ICC color profiles in the folder „C:\windows\system32\spool\drivers\color“.

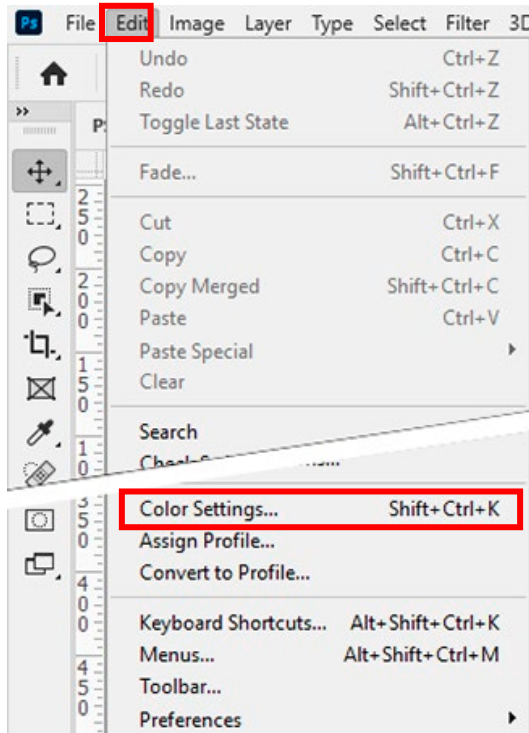
www.sublisplash.de

*Alle Warenzeichen, Produktnamen und Logos sind Eigentum der jeweiligen Besitzer.
Alle hier nicht ausdrücklich gewährten Rechte bleiben vorbehalten.

Sublisplash®

Colour in Motion

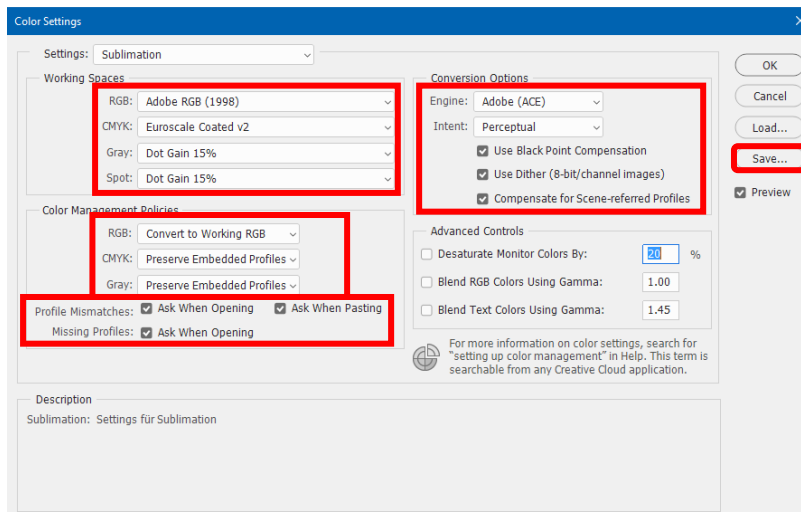
5. Creating Color Setting “Sublimation” in Adobe Photoshop



Start Photoshop.

Click on “Edit” in the menu bar.

Click on “Color Settings...”.



Take the settings exactly as you see them in this screenshot.

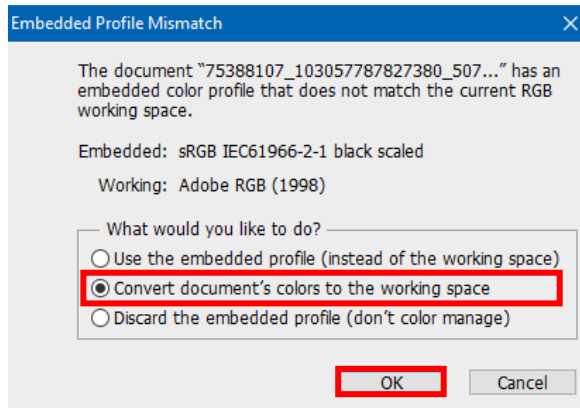
Click on “Save” to save your settings. Select an obvious file name when saving (we recommend “Sublimation”)!

www.sublisplash.de

**Alle Warenzeichen, Produktnamen und Logos sind Eigentum der jeweiligen Besitzer.
Alle hier nicht ausdrücklich gewährten Rechte bleiben vorbehalten.*

6. Loading a test file and assigning the ICC color profile in Photoshop

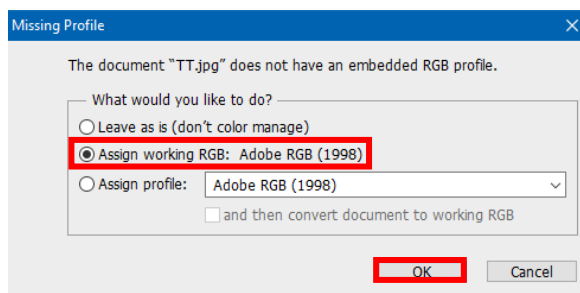
If the file has a different working color space, the window "Embedded Profile Mismatch" appears.



Select the option "Convert document's colors to the working space".

Confirm by clicking on "OK".

If the file has no working color space, the window "Missing Profile" appears.



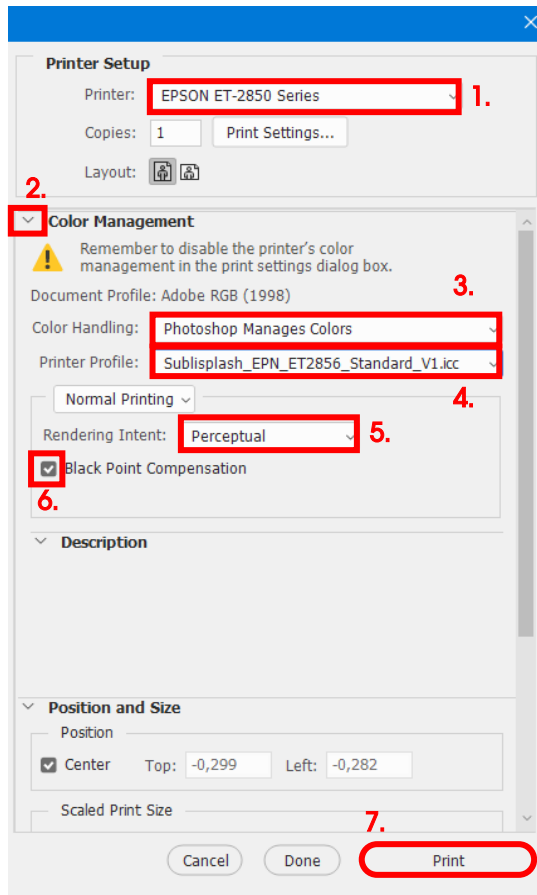
Select the option "Assign working RGB: Adobe RGB (1998)".

Confirm by clicking on "OK".

Sublisplash®

Colour in Motion

In the menu bar click on **"File"** and then in the drop-down menu on **"Print"** to call up the Photoshop print dialogue.



1. Select the „EPSON ET-2850 Series“ in the printer field.

2. Should „Color Management“ not yet be unfolded, open it by clicking on the arrow to the left of the word „Color Management“.

3. Select “Color Handling:” “Photoshop Manages Colors”.

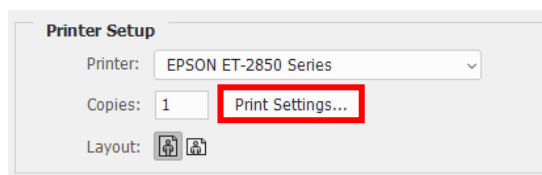
4. Select our current ICC color profile under “Printer Profile”.

5. Under “Rendering Intent:” select “Perceptual”.

6. Check “Black Point Compensation”.

7. To print now, click “Print”.

Practical tip: Before you print, we recommend that you check to ensure that the print preset currently set in the printer driver is correct.



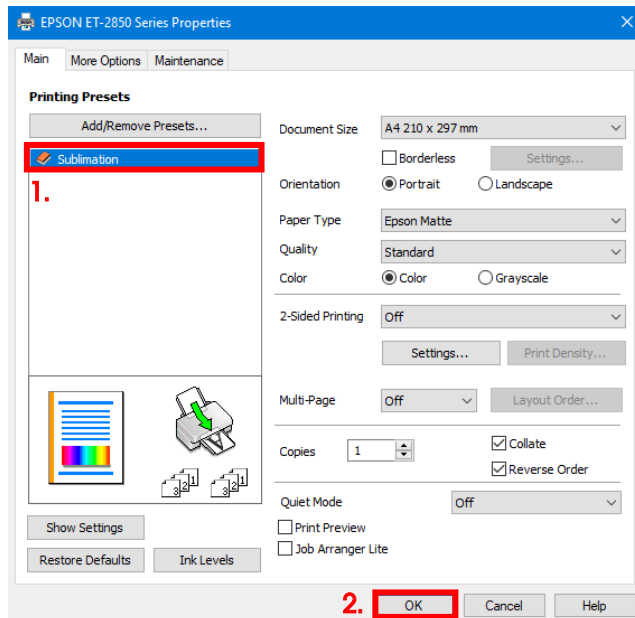
To do this, click on **"Print Settings..."** in the Photoshop print dialogue.

www.sublisplash.de

**Alle Warenzeichen, Produktnamen und Logos sind Eigentum der jeweiligen Besitzer.
Alle hier nicht ausdrücklich gewährten Rechte bleiben vorbehalten.*

Sublisplash®

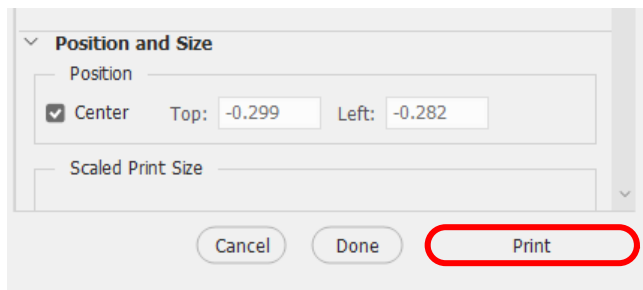
Colour in Motion



1. Select the setting you saved (here: **"Sublimation"**) under **"Printing Presets"** (highlighted in blue) by clicking on it.

2. Confirm the selection with a mouse click on **"OK"**. The **"EPSON ET-2850 Series Properties"** window will close.

Place a few sheets of **SUBLIPRIME** paper into the paper tray of the printer with the unprinted side facing **forward**.



By clicking on **"Print"** you start the printout.

You have now completed the initial installation for your Epson ET-2856 printer with **Sublisplash EPN+ inks** and the initial setup for Adobe Photoshop.

Should you need help in selecting or checking these settings, we have provided the instructions **"Integrating Color Profile Epson ET-2856 – Photoshop_EPN+_EN"** on our Sublisplash website in the section **"Instructions for Epson printers"**.

www.sublisplash.de

**Alle Warenzeichen, Produktnamen und Logos sind Eigentum der jeweiligen Besitzer.
Alle hier nicht ausdrücklich gewährten Rechte bleiben vorbehalten.*