

Sublisplash®

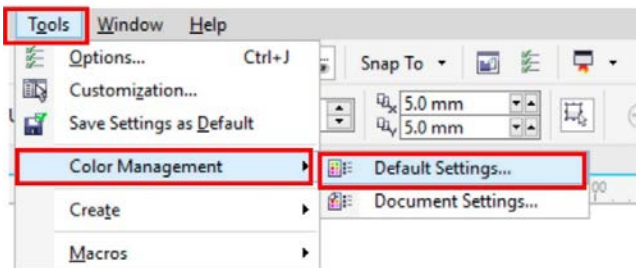
Colour in Motion

Integration of the color profile
Ricoh 2600, 3300, 7000, 7700
Corel Draw X5-X8

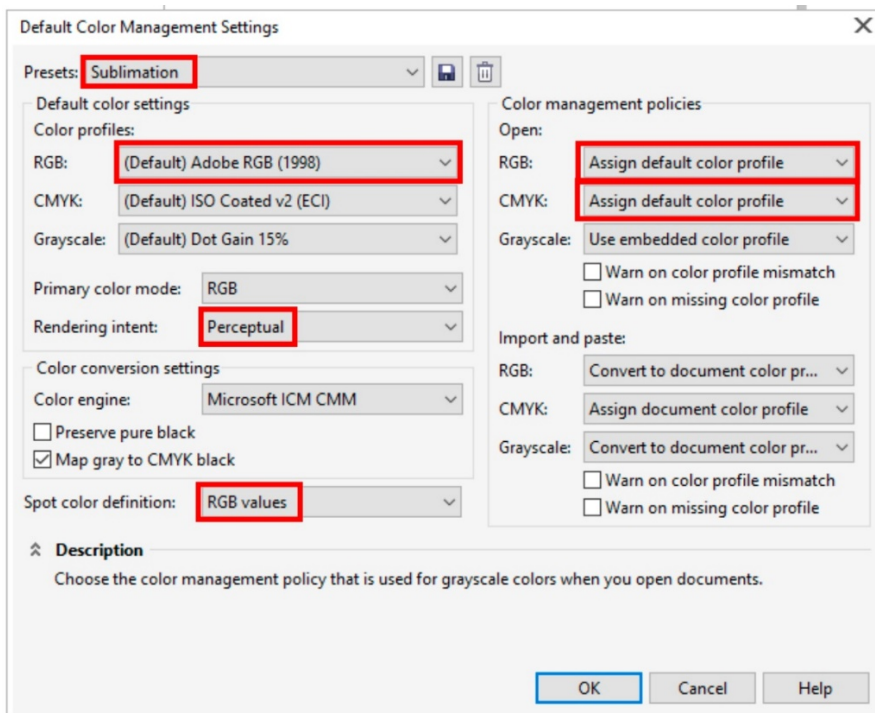
Although the screenshots in the following manual relate to the Ricoh SG 7100DN, the installation process for the Ricoh SG 3110 DN is virtually identical.

1. Check Colour settings

1.1 Open the default color management settings.



1.2 Select and if need be check your sublimation presets.



www.sublisplash.com

*All trademarks, product names and logos are the property of their respective owners.
Any rights not expressly granted herein are reserved.

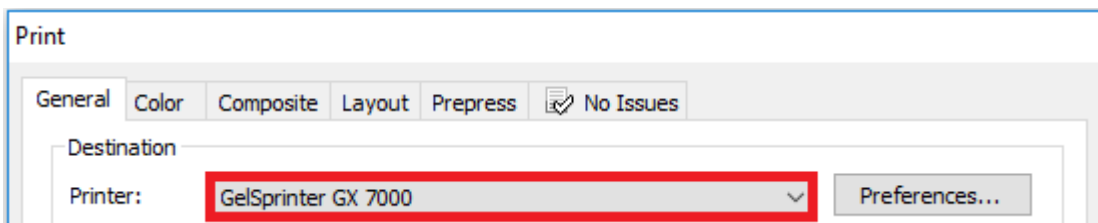
Sublisplash®

Colour in Motion

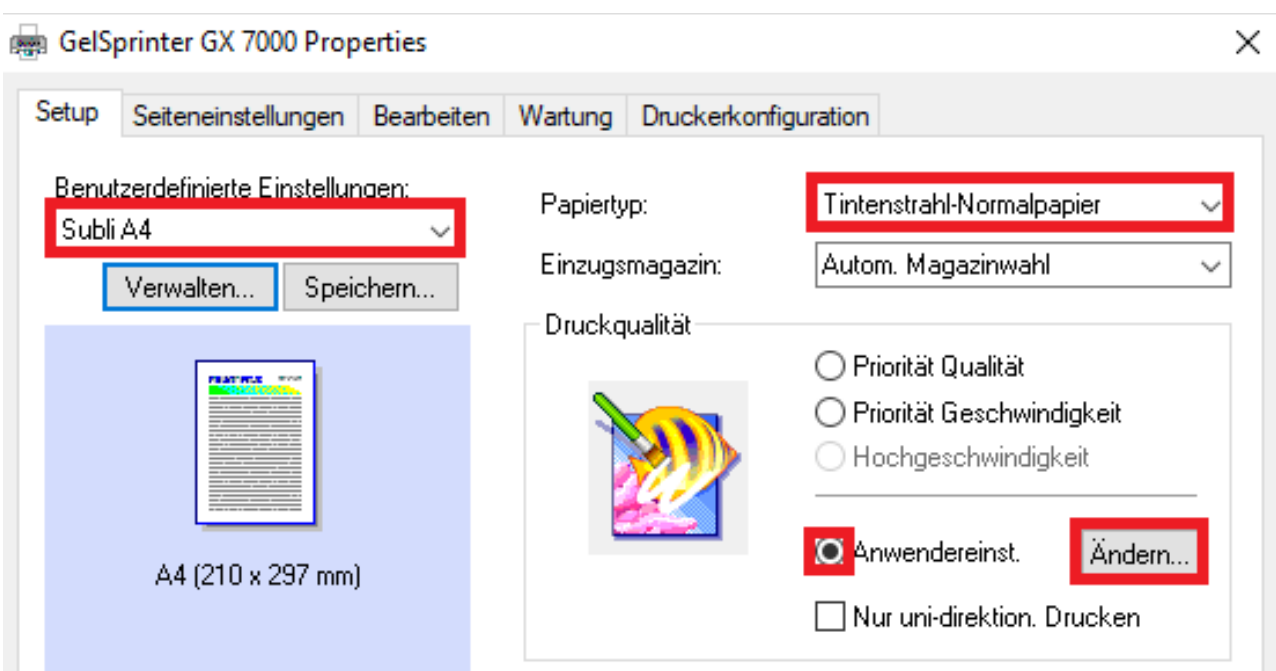
2. Changing driver properties

2.1 Open printing settings through “File” > “Print”.

2.2 Choose the printer and open the driver preferences.



2.3 Select and check your previously saved sublimation preset. Afterwards press the change button right of the custom print quality.



2.4 In the tab “Detailed Settings” through “Print Quality” check if all changes have been made.

2.5 If all changes have been made, verify and go back to your printing settings by pressing “OK”.

www.sublisplash.com

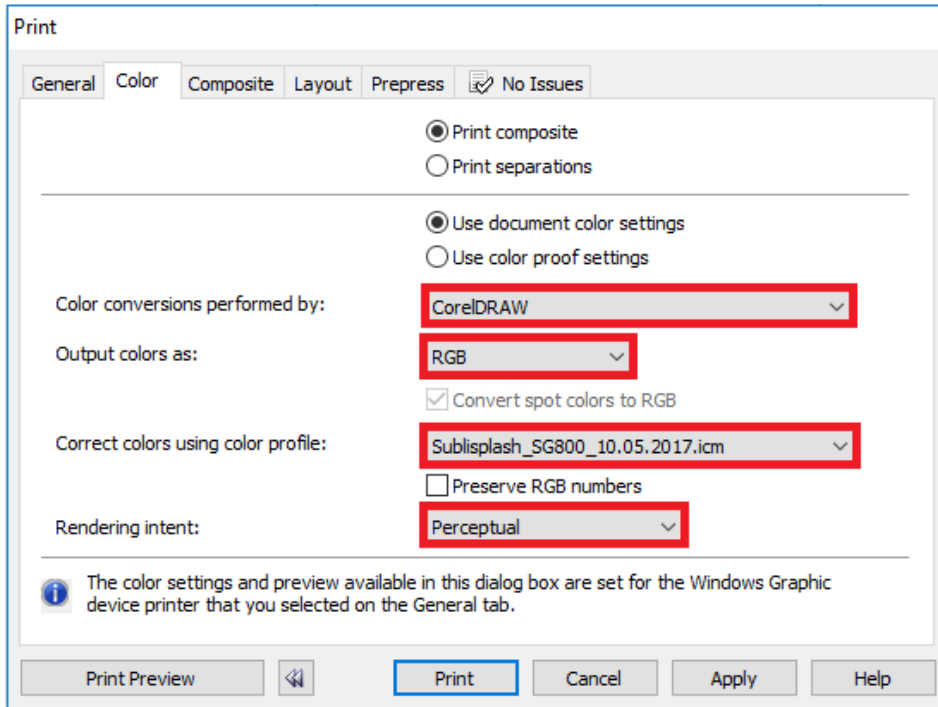
**All trademarks, product names and logos are the property of their respective owners.
Any rights not expressly granted herein are reserved.*

Sublisplash®

Colour in Motion

3. Color Settings in the Printing menu

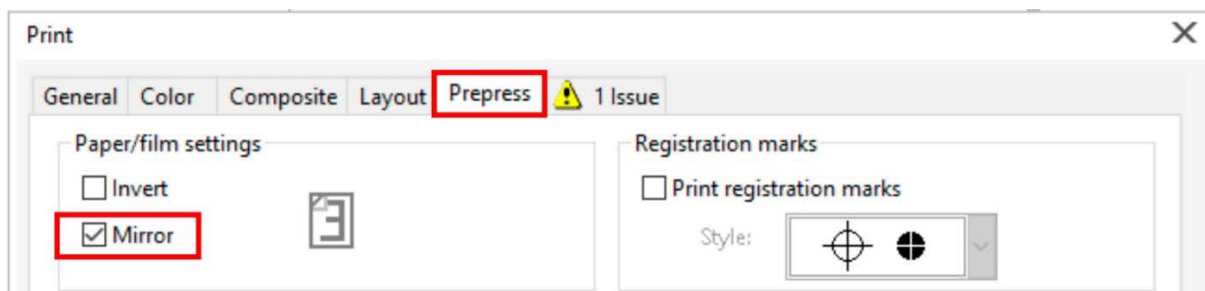
3.1 In the tab “Color”, check if the settings are correct and if the ICC profile has been selected.



4. Mirroring the Image

! Mirroring Images can't be set up within the driver, therefor you'll need to do it through your graphics program.

4.1 To mirror the picture when printing, In the menu “Print” check the box “Mirror” in the Tab “Prepress”.



5. You are now ready to print.

www.sublisplash.com

**All trademarks, product names and logos are the property of their respective owners.
Any rights not expressly granted herein are reserved.*