

# THE EDUCATION SYSTEM

*The ideal turn-key system designed for small footprints.*

This system is ideal for small footprints and has been designed as a turn-key unit for the fish farm enthusiast or education specialist. The system offers the opportunity to support a science, technology, engineering, and mathematics (STEM) curriculum that includes a wide range of subjects, including aquatic science, math, engineering, chemistry, horticulture, and more. It is a natural fit for STEM education and experimental learning.

## AQUACULTURE TECHNOLOGY FEATURES

- 300 gallons total (fish tank + filters)
- System uses less than 1.5% of its volume daily
- Fiber-reinforced plastic (FRP) grating platform and adjustable pedestals for support
- 100 pounds of coolwater or warmwater fish production annually
- Treats up to one-pound daily of a 40% protein, commercial fish diet
- Simple and effective filter pads for solids filtration
- Biofiltration media provides over 250 ft<sup>2</sup>/ft<sup>3</sup> of surface area for nitrifying bacteria
- Water is circulated using gravity flow and simple airlift pumps
- Freshwater and saltwater compatible



Aquaculture Technology

Hydroponic Technology

**AQUATIC**  
EQUIPMENT & DESIGN INC.

Phone: +1 407 995 6490 • Order Online: [AquaticED.com](http://AquaticED.com)

# THE EDUCATION SYSTEM



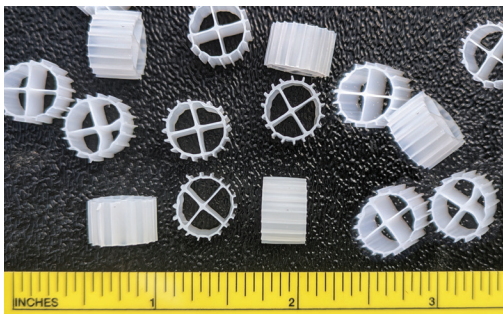
## HYDROPONIC TECHNOLOGY FEATURES

- 33 gallons total
- 3'x3' quick assembly table and tray
- Light hanger
- 100 heads of leafy greens annually
- A variety of lighting can be used

This system's robustness includes industry leading components and technology. It eliminates design issues for the user and allows a focus on production and education. Contact AED regarding heater, UV, and water quality test kit options or air pump repair kits.



*The hydroponic stand provides a fast fitting and no hassle assembly in minutes.*



*The Kaldness media provides optimal conditions for beneficial bacteria to thrive in the biofilter.*



*Fiber-reinforced plastic grating and adjustable pedestals provide longevity and easy system set-up in a variety of conditions.*

## SPECIFICATIONS

SPECIFICATIONS	AQUACULTURE SYSTEM <sup>1</sup>	WITH HYDROPONICS OPTION <sup>2</sup>
System Dimensions (LxWxH) feet	8'x6'x4'	12'x6'x4'
Suggested Total Area (ft <sup>2</sup> )	120 (12'x10')	150 (15'x10')
Total System Volume (gallons)	300	350
Electrical Service Requirements	1-phase; 120V, 60Hz	1-phase; 120/240V, 60Hz
Electrical Usage (kWh/day)	2.05	4.45*
Electrical Cost per Week (\$) **	\$2.90	\$6.25
Base System Cost (\$)	\$6,800	\$8,000***

<sup>1</sup> BASE PRICE INCLUDES
Fish tank
Filter tanks
Fiberglass stands & adjustable pedestals
Air Pump
Assembled PVC Plumbing
Construction Guide

<sup>2</sup> BASE PRICE INCLUDES
Aquaculture Components
Hydroponic table (3'x3')
Grow Light Hanger
Assembled PVC Plumbing
Lighting Additional

\* Assuming a single 200W lamp with 12 hour/day operation time.  
 \*\* Assuming utility fee of \$0.20/kWh.  
 \*\*\* Optional lighting not included.

