



Herbal Solutions For Wellness

Naturally Potent Herbal Extracts For Daily Support.





Table of Contents

4 ruved story

6 our process

8 herbs to shelf

10 supplements

34 oils by ruved

36 AyushPet



Our Mission



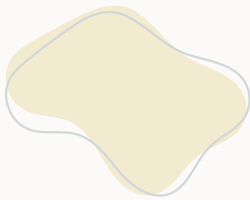
Mind-Body Wellness

At ruved, we believe the power of herbs can build a strong foundation for daily health. Our herbal formulas combine the best of modern science with the wisdom of Ayurveda for pure, reliable wellness support.



Herbal Education

We want to share the benefits of Ayurvedic herbs with everyone, so they feel empowered to use these amazing plants to help themselves lead healthy, vital lives.



Pure & Balanced

Herbs grown in fertile soil and pristine environments are the backbone of our products. Formulated by practicing doctors to be balanced and appropriate for most people, our products don't require knowledge of Ayurveda (or body type) to get great results.



Our Story

Our company was founded over 30 years ago by the Sodhi brothers, naturopathic doctors who were looking for high-quality Ayurvedic herbal supplements to use in their clinic in the Pacific Northwest. Upon finding no products that met their standards, they decided to grow and process their own herbal extracts in their homeland India, where Ayurvedic herbs grow naturally.

ruved continues to be powered by nature, informed by ayurveda, enhanced by science, and family owned and operated.





Quality Matters

Our herbs are grown and harvested to the highest quality specifications. Close attention is paid to the health and development of each plant in every aspect, including the overall condition of the plant and the timing of harvesting, to ensure optimal potency.

The herbs in our supplements are organically grown and sustainably harvested from the healthiest and most potent plants. We invest in educating our farmers in sustainable growing methods to help ensure the land remains healthy and productive for generations to come.



Our Process

We cultivate organically grown herbs on farms in the western Himalayas of India.

The raw materials are extracted in our organic (GMP, ISO & USDA certified) processing facility and tested for heavy metals, contaminants, and

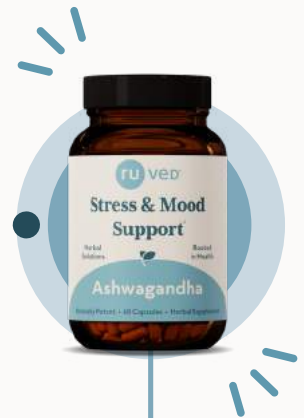
Then they are sustainably harvested by our partners in India, primarily in the pristine Himachal Pradesh region of India.

At ruved, we provide pure, potent, and unique formulas that promote health from the inside out. Our supplements are concentrated, ensuring maximum benefit in fewer servings, making them easy to incorporate into everyday wellness routines.

Our extracts undergo a second round of third-party testing by our manufacturing partners where they are bottled in GMP-certified facilities.

Extracts that meet ruved standards are exported to the States where they receive another round of testing upon arrival.

Finished products are shipped to our warehouse until they find a home with you!



introducing ruved herbal solutions



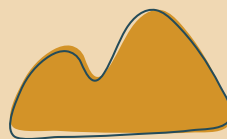
Capsules



Jams



Drops



Powders



Caplets



Oils

ABC Aid™

Adrenal, Brain, & Cell Support*



Supplement Facts

Serving Size 2 Capsules
Serving Per Container 30

| Amount Per Serving | % Daily Value |
|--------------------------------|---------------|
| Phosphatidyl Serine 60% 250 mg | † |

† Daily Value not established

Other ingredients: TriCalcium phosphate, Magnesium citrate, Vegetarian capsule (hypromellose), and Leucine.



Vegan



Dairy, Soy,
& Wheat Free



Third Party
Tested



Non-GMO

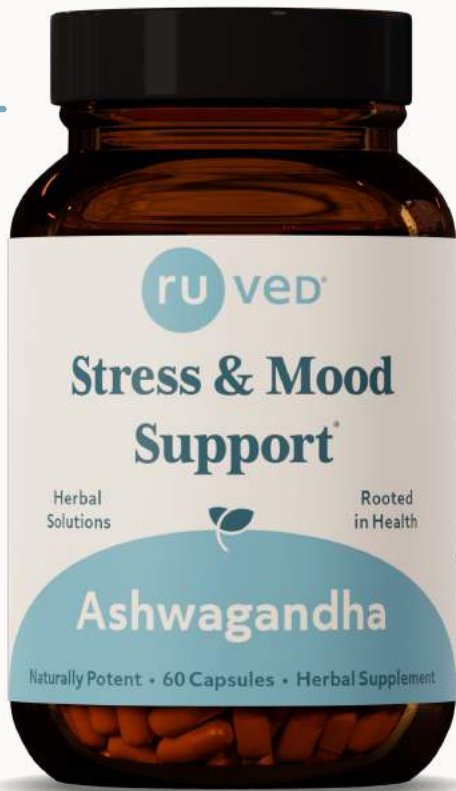
ru drained?

Your brain thrives on targeted nutrition to perform optimally. ABC Aid provides brain food that helps uplift mood, focus, & sleep! ABC Aid is sunflower derived phosphatidylserine that supplies adrenal and cognitive support for daily health.*

- Provides nutrients for brain health*
- Supports adrenal function*
- Plant-derived phosphatidylserine*
- Aids muscle recovery post exercise*
- Promotes a healthy nervous system*
- Helps provide restful sleep*

Ashwagandha

Stress & Mood Support*



Supplement Facts

Serving Size 1 Capsule
Serving Per Container 60

| Extract Amount Per Serving | % Daily Value |
|--------------------------------------|---------------|
| Ashwagandha ^o root 500 mg | † |
| Withanolides 25 mg | † |

† Daily Value not established.
^o Organically grown.

Other ingredients: Vegetarian capsule (Hypromellose, Titanium dioxide, caramel colour), Silicon dioxide, Magnesium stearate (from a vegetarian source).



Vegan



Dairy, Soy,
& Wheat Free



Third Party
Tested



Non-GMO

ru stressed?

Daily stressors can challenge your mood & overall health. Uplift your body's natural response to stress with potent ashwagandha root extract. Ashwagandha helps support the region of the brain that regulates your response to occasional stress for mind and body balance.*

- Adaptogenic magic!
- Offers powerful stress support*
- Helps balance nightly sleep cycles*
- Provides hormone regulation*
- Uplifts mood for daily support*
- Mind & Body Balance*

* These statements have not been evaluated by the Food and Drug Administration. These products are not intended to diagnose, treat, cure or prevent any disease.

Ashwagandha Drops

Stress & Mood Support*



Supplement Facts

Serving Size: One full dropper (approx. 0.75 ml)
Servings Per Container: 80

| Extract Amount Per Serving | % Daily Value |
|--------------------------------------|---------------|
| Ashwagandha ^o root 100 mg | † |

† Daily Value not established.
^o Organically grown.

Other ingredients: Glycerin, water, and lemon flavors from a natural source.



Vegan



Dairy, Soy,
& Wheat Free



Third Party
Tested



Non-GMO

ru stressed?

Daily stressors can challenge your mood & overall health. Uplift your body's natural response to stress with potent ashwagandha root extract. Ashwagandha helps support the region of the brain that regulates your response to occasional stress for mind and body balance.*

- Kid Friendly!
- Offers powerful stress support*
- Helps balance nightly sleep cycles*
- Provides hormone regulation*
- Uplifts mood for daily support*
- Mind & Body Balance*

Carditone[®]

Blood Pressure Support*



Supplement Facts

Serving Size 1 Caplet
Serving Per Container 30

| Amount Per Serving | % Daily Value |
|--|---------------|
| Calcium (as Coral Calcium) 60 mg | 4.6% |
| Magnesium 40 mg (as Magnesium Aspartate) | 9.5% |

Proprietary Extract Blend 550 mg †
Arjuna[°] bark, Cabbage rose[°] flower, Shankpushpi[°]
whole plant, Tribulus[°] seed, Boerhavia[°] whole plant,
Rauwolfia[°] root, Madagascar Periwinkle[°] root

† Daily Value not established.

° Organically grown.

Other ingredients: Microcrystalline Cellulose, Stearic Acid, Croscarmellose Sodium, Magnesium Stearate, Silicon Dioxide, and Natural Food Glaze Coating.

May contain crustacean shellfish.



Essential
Nutrients



Dairy, Soy,
& Wheat Free



Third Party
Tested



Non-GMO

ru healthy?

Choose Carditone for natural, holistic cardiovascular support. Carditone's unique herbal blend helps balance your body's natural processes and contributes to every day health.*

- Herbal blood pressure support*
- Made with organic herbs*
- Trusted & used for 30+ years
- Daily source of antioxidants
- Designed by doctors for you
- Provides cardiovascular support*

* These statements have not been evaluated by the Food and Drug Administration. These products are not intended to diagnose, treat, cure or prevent any disease.

Curcumin

Foundational Health Support*



Supplement Facts

| Serving Size 1 Capsule | |
|--|---------------|
| Serving Per Container 60 | |
| Extract Amount Per Serving | % Daily Value |
| Turmeric Root Extract (97% curcuminoids) 250mg | † |
| † Daily Value not established | |

Other ingredients: Vegetarian Capsule, Magnesium Stearate, and Silicon Dioxide.



Vegan



Dairy, Soy,
& Wheat Free



Third Party
Tested



Non-GMO

ru aging?

Vitality at every age starts from within. Curcumin delivers full spectrum support for your joints, muscles, and mind! Our potent turmeric root extract is rich in antioxidants, and aids in strengthening daily body functions for every day wellness!*

- Adaptogenic wellness support
- Promotes muscle & joint support*
- Provides nutrients for brain health*
- Aids in digestive health*
- Aids muscle recovery post exercise*
- Helps support liver health*

Full Cycle™

Menstrual Cycle Balance*



| Supplement Facts | |
|---|---------------|
| Serving Size 1 Capsule | |
| Serving Per Container 30 | |
| Amount Per Serving | % Daily Value |
| Vitamin B-6 (as Pyridoxal-5-Phosphate) 50 mg | 2941% |
| Proprietary Herbal Blend Extract Powder 525 mg | † |
| Lodhra ^o root, Ginger ^o root, Aloe vera leaf, Chaste tree berry, Ashoka tree ^o bark & flower, Fennel seed, Gotu kola ^o whole plant, Bamboo ^o manna | |
| Borage Seed Oil Powder (50% GLA) 100 mg | † |
| Dill seed extract 50 mg | † |
| Dong quai root extract 50 mg | † |
| Percent daily values are based on a 2000 calorie diet. | |
| † Daily Value not established. | |
| ^o Organically grown. | |

Other ingredients: Vegetarian Capsule, Magnesium Stearate (from a vegetarian source), and Silicon dioxide.

- 
 Vegan
- 
 Dairy, Soy,
& Wheat Free
- 
 Third Party
Tested
- 
 Non-GMO

ru balanced?

Monthly menstrual cycles can shift your mood and impact daily health. Balance your cycle with Full Cycle's holistic herbal blend.* Ashoka tree, lodhra, and aloe vera plant parts provide phytonutrients and antioxidant support to help regulate hormones.*

- Offers antioxidant support*
- Helps balance menstrual cycles*
- Helps ease hormonal shifts*
- Aids in uterine and urinary health*
- Promotes menstrual comfort*
- Uplifts mood all month long*

* These statements have not been evaluated by the Food and Drug Administration. These products are not intended to diagnose, treat, cure or prevent any disease.

Golden Blend™

Curcumin + CoQ10 Daily Health Support*



| Supplement Facts | |
|--|---------------|
| Serving Size 1 teaspoon (2 grams‡) Serving Per Container 60 | |
| Amount Per Teaspoon | % Daily Value |
| Calories 7 | |
| Total Fat 0.6 g | <1% |
| Saturated Fat 0.6 g | 3% |
| Trans Fat 0 g | † |
| Coconut Milk Powder 960 mg | † |
| Turmeric root extract (97% curcuminoids) 960 mg | |
| Coenzyme Q-10 40 mg | |
| Trikatu° extract blend 40 mg | |
| Ginger root, Long pepper fruit, Black pepper fruit | |

Percent Daily Values are based on a 2,000 calorie diet.
† Daily Value not established.
° Organically grown.
‡ Content weight may vary and is specific to product & texture.

Allergen Warning: This product contains tree nuts (coconut).



ru golden?



Protect your body from daily wear & tear with support from Golden Blend! The combination of herbs, spices, and CoQ10 provides easily accessible nutrients that aid in promoting brain, muscle, heart, and digestive health.* We suggest adding Golden Blend to smoothies, yogurt, or even eating it by the spoonful!

- Adaptogenic magic!
- Promotes muscle & joint support*
- Provides nutrients for brain health*
- Active ingredient in turmeric!
- Aids muscle recovery post exercise*
- Supports heart health*



Guggal Power™

Blood Vessel & Cholesterol Support*



New Formula!

Supplement Facts

Serving Size: 1 Capsule
Serving Per Container: 60

| Extract Amount Per Serving | % Daily Value |
|--------------------------------------|---------------|
| Bergamot fruit liposome 250 mg | † |
| Red Yeast Rice 250 mg | † |
| Guggul [°] gum resin 250 mg | † |
| AmlaOxy [°] fruit 100 mg | † |

† Daily Value not established.
° Organically grown.

Other ingredients: Vegetarian capsule, silicon dioxide, magnesium stearate (vegetarian source).



Vegan



Dairy, Soy,
& Wheat Free



Third Party
Tested



Non-GMO

ru healthy?

Promote healthy blood flow and balanced cholesterol levels with daily support from our dynamic herbal blend: Guggal Power. Guggal Power features a combination of guggul, triphala, and daily nutrients to help nourish blood vessels for heart health.*

- Aids in balanced cholesterol levels*
- Promotes a healthy metabolism*
- Supports healthy blood vessels*
- Enhances Cardiovascular health*
- Provides every day wellness*
- Features guggul extract!

* These statements have not been evaluated by the Food and Drug Administration. These products are not intended to diagnose, treat, cure or prevent any disease.

Gut Pals™

Probiotic Microbiome Aid*



Supplement Facts

Serving Size 2 Capsules
Serving Per Container 30

| Amount Per Serving | % Daily Value |
|---|---------------|
| Proprietary blend 445 mg | † |
| <i>Lactobacillus acidophilus, Lactobacillus rhamnosus, Lactobacillus casei, Lactobacillus plantarum, Bifidobacterium longum, Bifidobacterium lactis, Streptococcus thermophilus</i> | |
| Totaling Probiotic CFU (colony forming units) 100 Billion at time of manufacture | |
| † Daily Value not established | |

Other Ingredients: Tapioca Maltodextrin, Vegetable Capsule, FOS (fructooligosaccharides), Vegetable Stearate and Silica.



Happy Gut



Gluten & Wheat Free



Soy, Dairy, & Egg Free



Potent Microbes

ru happy?



More specifically, is your gut happy? Your microbiome breaks down food, provides immune support, & influences your mood.* Gut Pals provides the best strains to help your gut community flourish for comfortable digestion and daily foundational support!*

- Supports a healthy microbiome*
- Promotes comfortable digestion*
- Provides mood support*
- Foundational gut health*
- Supports immune health*
- Complete wellness support*

Heart Warrior™

Heart Support* + Antioxidants



Supplement Facts

Serving Size 1 Capsule
Serving Per Container 60

| Amount Per Serving | % Daily Value |
|--|---------------|
| Vitamin B-6 (Pyridoxine HCl) 25 mg | 1250%† |
| Folic acid 400 mcg | 100%† |
| Magnesium (from Magnesium Aspartate) 60 mg | 15%† |
| Coenzyme Q-10 (CoQ10) 30 mg | †† |
| Coral Powder 100 mg | †† |
| Arjuna (bark) 300 mg | †† |
| Pushkamool (root) 100 mg | †† |

† Percent daily values are based on a 2000 calorie diet
†† Daily Value not established

Other ingredients: Vegetarian Capsule (Rich Yellow Opaque), Magnesium Stearate, and Silicon Dioxide.

- Essential
Nutrients
- Dairy, Soy,
& Wheat Free
- Third Party
Tested
- Non-GMO

ru active?

Active lifestyles demand a lot of our hearts. Heart Warrior is a 4 part solution that helps your heart during & after intense activity.* Arjuna bark, CoQ10, B vitamins, and minerals work together to provide your body with full spectrum heart and circulatory support.*

- Full spectrum heart support*
- Cellular energy for exercise performance
- Promotes healthy circulation*
- Supports healthy blood pressure already within normal levels*
- Promotes heart strength*

* These statements have not been evaluated by the Food and Drug Administration. These products are not intended to diagnose, treat, cure or prevent any disease.

Immune Daily™

Immune Support + Seasonal Defense*



Supplement Facts

Serving Size 1 Capsule
Serving Per Container 60

| Extract Amount Per Serving | % Daily Value |
|--|---------------|
| Amla° (<i>Emblica officinalis</i>) fruit 200 mg | † |
| Beleric myrobalan° (<i>T. belerica</i>) fruit 200 mg | † |
| Holy basil° (<i>Ocimum sanctum</i>) leaf 200 mg | † |
| Indian tinospora° (<i>T. cordifolia</i>) stem 100 mg | † |
| Licorice° (<i>Glycyrrhiza glabra</i>) root 100 mg | † |
| Malabar nut tree° (<i>A. vasica</i>) leaf 50 mg | † |
| Trikatu blend 50 mg | † |
| black pepper° fruit, ginger° root, long pepper fruit | |

† Daily Value not established
° Organically grown

Other ingredients: Vegetarian capsule (hypromellose and water), magnesium stearate (from vegetarian source), and silicon dioxide.



Vegan



Dairy, Soy,
& Wheat Free



Third Party
Tested



Non-GMO

ru proactive?

Protect your immune system with herbs! Immune Daily's herbal blend helps provide natural seasonal defense for daily health.* Our synergistic blend features holy basil, amla, and trikatu to supply antioxidants and vitamin C for holistic immune support.*

- Holistic immune support*
- Promotes clear sinuses*
- High source of antioxidants
- Wild harvested adaptogenic herbs
- Natural defense against the seasons*
- Offers plant-based vitamin-C

JoyLift™

Natural Mood Support*



Supplement Facts

Serving Size 1 Capsule Serving Per Container 60

| Amount Per Serving | % Daily Value |
|--|---------------|
| Potassium (from potassium chloride) 10 mg | < 1% |
| Calcium (from calcium citrate) 2 mg | < 1% |
| Magnesium (from magnesium citrate) 2 mg | 50% |
| Copper (from cupric oxide) 1 mg | 111% |
| Manganese (from manganese sulfate) 1 mg | 43% |
| Phosphorus (from dicalcium phosphate) 1 mg | < 1% |
| Sodium chloride 1 mg | < 1% |
| Zinc (from zinc sulfate) 1 mg | 9% |
| Iodine (from potassium iodine) 25 mcg | 17% |
| Molybdenum (AA chelate) 25 mcg | 55% |
| Proprietary extract blend 500 mg | † |
| Ashwagandha° root, Indian barberry° stem, Bacopa° herba, Velvet bean° seed, Shilajit resin, Saffron stigma, and St. John's wort aerial parts | |
| MSM (methylsulfonylmethane) 10 mg | † |
| Boron (from boron citrate) 1 mg | † |

† Daily Value not established

° Organically grown

Other ingredients: Vegetarian Capsule, Silicon Dioxide, Microcrystalline Cellulose, Croscarmellose Sodium, and Magnesium Stearate.



Vegan



Dairy, Soy,
& Wheat Free



Third Party
Tested



Non-GMO



Uplift your mood with support from JoyLift™. This nutrient packed herbal blend features saffron for natural mood elevating properties.* JoyLift™ helps ease the effects of stress on the body, produces calming effects for the mind, & promotes better sleep for balanced wellness.*

- Uplifting herbal mood formula*
- Promotes healthy stress response *
- Promotes healthy sleep cycles*
- Adaptogenic support*
- Mind & body balance*
- Calms the nervous system*

* These statements have not been evaluated by the Food and Drug Administration. These products are not intended to diagnose, treat, cure or prevent any disease.

Livtone™

Liver Health & Cleanse Support*



Supplement Facts

Serving Size 1 Capsule
Serving Per Container 60

| Amount Per Serving | % Daily Value |
|--|---------------|
| Proprietary extract blend 500 mg | † |
| Kutki° (<i>Picrorhiza kurroa</i>) root, Punamava° (<i>Boerhaavia diffusa</i>) root, Guduchi° (<i>Tinospora cordifolia</i>) stem, Sharpunkha° (<i>Tephrosia purpurea</i>) whole plant, Bhumi Amalaki° (<i>Phyllanthus amarus</i>) whole plant, Chirayata° (<i>Swertia chirata</i>) aerial parts, Bhringraj° (<i>Eclipta alba</i>) leaf, Arka° (<i>Calotropis gigantea</i>) leaf, Radish° (<i>Raphanus sativa</i>) root, Barberry° (<i>Berberis aristata</i>) stem, Arjuna° (<i>Terminalia arjuna</i>) bark, Bahera° (<i>Belleric myrobalan</i>) fruit, Haritaki° (<i>Terminalia chebula</i>) fruit, Amla° (<i>Emblica officinalis</i>) fruit, Makoe° (<i>Solanum nigrum</i>) whole plant, Kalmegh° (<i>Andrographis paniculata</i>) whole plant | |

† Daily Value not established
° Organically grown

Other ingredients: Vegetarian capsule, Magnesium stearate (from a vegetarian source), Silicon dioxide.



Vegan



Dairy, Soy,
& Wheat Free



Third Party
Tested



Non-GMO



Your liver processes all of the nutrients and toxins your body encounters every day. Give your liver some love with Livtone! This synergistic blend of 16 herbs holistically supports natural detoxification and optimal elimination for balanced daily health.*

- Holistic blend for liver vitality*
- Promotes detoxification*
- All natural liver cleanse support*
- Supports healthy elimination*
- Helps balance modern indulgences*
- Promotes liver health*

Memoren™

Brain & Memory Support*



Supplement Facts

Serving Size 1 Capsule
Serving Per Container 60

| Extract Amount Per Serving | % Daily Value |
|---|---------------|
| Gotukola° whole plant 120 mg | † |
| Shankpushpi° aerial parts 120 mg | † |
| Ginkgo (<i>Ginkgo biloba</i>) leaf 80 mg | † |
| Bacopa° (<i>Bacopa monnieri</i>) whole plant 80 mg | † |
| Ashwagandha° (<i>Withania somnifera</i>) root 80 mg | † |

† Daily Value not established
° Organically grown

Other ingredients: Vegetarian Capsule (Caramel Opaque color), Magnesium Stearate, and Silicon Dioxide.



Vegan



Dairy, Soy,
& Wheat Free



Third Party
Tested



Non-GMO

ru sharp?

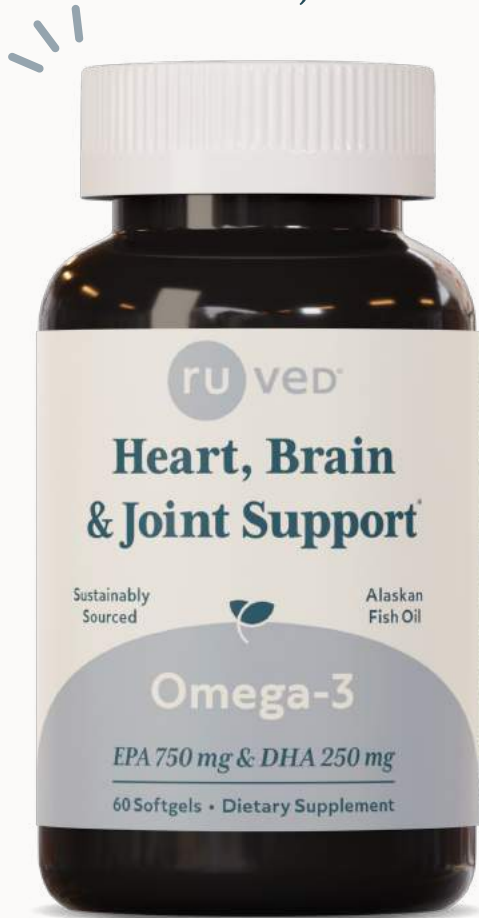
Every day life gives us a lot to keep track of. Memoren helps keep your brain healthy, so you can focus on what's important. When taken consistently, this herbal blend featuring bacopa extract helps boost brain function and provide memory support.*

- Powerful support for brain health*
- Promotes sharp focus and clarity*
- Supports memory health*
- Helps calm the nervous system*
- Healthy neurotransmitter function*
- Take consistently for best results

* These statements have not been evaluated by the Food and Drug Administration. These products are not intended to diagnose, treat, cure or prevent any disease.

Omega-3

Heart, Brain, & Joint Support*



Nutrition Facts

| | |
|------------------------------------|----------------------------|
| 60 Servings Per Container | |
| Serving Size 1 softgel (1250mg) | |
| Amount per serving | |
| Calories | 13 |
| | % Daily Value [§] |
| Total Fat 1.25 g | 2% |
| Saturated fat 0 mg | 0% |
| Trans fat 0 mg | 0% |
| Cholesterol 0 g | 0% |
| Omega-3 Fatty Acids 1000 mg | † |
| EPA (Eicosapentaenoic Acid) 750 mg | † |
| DHA (Docosahexaenoic Acid) 250 mg | † |

x3 More Potent Than Most Omega-3 Softgels!

Not a significant source of saturated fat, trans fat, cholesterol, carbohydrates, dietary fiber, sugars, or protein.

[§] The % Daily Value (DV) tells you how much a nutrient in a serving of food contributes to a daily diet. 2,000 calories a day is used for general nutrition advice.

Ingredients: Gelatin (Bovine), Purified water, Glycerin.

Contains sustainably harvested Fresh Alaskan Pollock.



Dairy, Soy, Corn & Gluten Free



Third Party Tested



No Artificial Color or Flavor

ru balanced?

Ensure your body has the right fatty acids it needs for balanced health. Wild-harvested from sustainably sourced Alaskan fish, our softgels offer 750 mg EPA & 250 mg DHA for fewer softgels per serving & no fish burps! The body uses Omega-3 to promote heart and brain health, while helping to maintain healthy joints for reliable every day wellness.*

- No fish burps!
- Substantially sourced Omega 3
- Pure and potent for daily wellness*
- Nutrients for brain health*
- Aids in cardiovascular health*
- Provides joint & muscle support*

Move Daily™

Joint & Muscle Support*



Supplement Facts

Serving Size 1 Capsule
Serving Per Container 60

| Extract Amount Per Serving | % Daily Value |
|--|---------------|
| Proprietary Extract Blend 272 mg | † |
| Bromelain 2400 GDU, Glucosamine sulphate 2KCL 95%, Chondroitin sulphate sodium 90% | |
| Indian frankincense [°] (<i>Boswellia serrata</i>) gum resin 300 mg | † |
| Contains Boswellic acid 150 mg | |
| Ginger [°] (<i>Zingiber officinale</i>) root extract 100 mg | † |
| Ashwagandha [°] (<i>Withania somnifera</i>) root extract 100 mg | † |
| Turmeric [°] (<i>Curcuma longa</i>) root extract 50 mg | † |

† Daily Value not established.
° Organically grown.

Other ingredients: Vegetarian Capsule, Magnesium Stearate, and Silicon Dioxide.

- 
 Daily
Nutrients
- 
 Dairy, Soy,
& Wheat Free
- 
 Third Party
Tested
- 
 Non-GMO

ru moving?

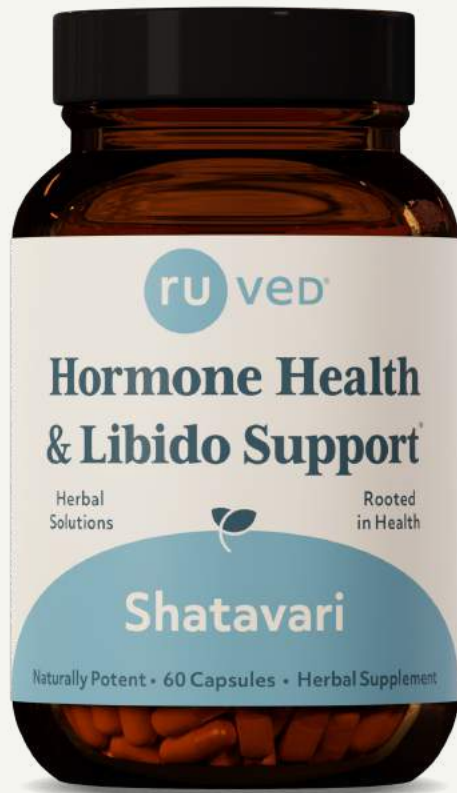
Don't let aching joints discourage you from partaking in the daily activities you enjoy! Uplift joint & muscle health with Move Daily™. Our potent turmeric root and boswelya extract blend is rich in antioxidants, designed to provide swift support for your active joints & muscles.*

- Supports active lifestyles*
- Holistic adaptogenic support*
- Promotes joint and muscle health*
- Promotes recovery and comfort for active people*
- Aids in recovery after exercise*

* These statements have not been evaluated by the Food and Drug Administration. These products are not intended to diagnose, treat, cure or prevent any disease.

Shatavari™

Hormone Health & Libido Support*



Supplement Facts

Serving Size 1 Capsule
Serving Per Container 60

| Extract Amount Per Serving | % Daily Value |
|---|---------------|
| Shatavari° (<i>Asparagus racemosus</i>) root extract 500 mg | † |

† Daily Value not established.
° Organically grown.

Other ingredients: Vegetarian Capsule (HPMC), Silicon Dioxide, Magnesium Stearate (from a vegetable source) Titanium dioxide, and Riboflavin.



Vegan



Dairy, Soy,
& Wheat Free



Third Party
Tested



Non-GMO



ru radiant?

Hormonal fluctuations can often feel uneasy. Restore balance with Shatavari, the herbal ally for radiant wellness and hormone balance. Shatavari potent root extract supports stress reduction, libido, and energy levels for your every day mind and body balance.*

- Daily hormone support*
- Promotes a healthy libido*
- Supports healthy fertility*
- Natural adaptogenic support*
- Mind and body balance*
- Promotes digestive health*

SkinTrio™

Skin Cleanse, Balance, & Repair*



| Supplement Facts | |
|---|---------------|
| Serving Size 1 Capsule Serving Per Container 60 | |
| Amount Per Serving | % Daily Value |
| Organic Neem Extract (leaf) 300 mg | † |
| Proprietary blend 200 mg | † |
| Amla (fruit), Bahera (fruit), Guduchi (stem), Haritaki (fruit), Indian Madder (stem) | |
| † Daily Value not established | |

Other ingredients: Vegetarian Capsule, Magnesium Stearate, and Silicon Dioxide.



Vegan



Dairy, Soy,
& Wheat Free



Third Party
Tested



Non-GMO



ru clear?

Breakouts happen: be prepared. SkinTrio's herbal solution works to cleanse, balance, and repair your skin from the inside out. Neem and potent botanicals provide support to your microbiome for improved digestion and strong immune function for glowing skin.*

- Promotes glowing skin*
- Daily health from the inside out*
- Promotes digestive health*
- Aids in balanced microbiome*
- Promotes clear and calm skin*
- Supports the immune system*

* These statements have not been evaluated by the Food and Drug Administration. These products are not intended to diagnose, treat, cure or prevent any disease.

Sugar Nix™

Glucose Metabolism Support*



| Supplement Facts | |
|--|---------------|
| Serving Size 1 Capsule Serving Per Container 60 | |
| Amount Per Serving | % Daily Value |
| d-Biotin 2150 mcg | 7166% |
| Chromium (Chromium Polynicotinate) 10.6 mcg | 30% |
| Betaine HCl 50 mg | † |
| Berberine HCl 200mg | † |
| Proprietary Herbal Extract Blend 600 mg † | |
| Gymnema° (<i>Gymnema sylvestree</i>) leaf, Bitter Melon° (<i>Momordica charantia</i>) fruit, Vijaysar° (<i>Pterocarpus marsupium</i>) stem, Neem° leaf, Holy Basil° (<i>ocimum sanctum</i>) leaf, Java Plum° (<i>Eugenia jambolana</i>) seed | |
| † Daily Value not established | |
| ° Organically grown | |

Other ingredients: Vegetarian Capsule, Silicon Dioxide, and Magnesium Stearate (from a vegetarian source).



Vegan



Dairy, Soy,
& Wheat Free



Third Party
Tested



Non-GMO

ru sweet?

Food cravings, fatigue & uneven metabolism can be caused by unsteady blood sugar. Find a healthy level with Sugar Nix! This herbal blend features gymnema, better known as the sugar slayer, which promotes healthy metabolism & blood sugar support.*

- Enhances blood sugar balance*
- Promotes steady energy*
- Helps calm food cravings*
- Promotes pancreatic health*
- Supports a healthy metabolism*
- Promotes healthy digestion*

Triphala™

Digestive Support*



Supplement Facts

Serving Size 1 Capsule
Serving Per Container 60

| Amount Per Serving | % Daily Value |
|------------------------|---------------|
| Amla° fruit 167 mg | † |
| Haritaki° fruit 167 mg | † |
| Bahera° fruit 167 mg | † |

† Daily Value not established
° Organically grown

Other ingredients: Vegetarian Capsule, Magnesium Stearate (from a vegetarian source), and Titanium dioxide.



Vegan



Dairy, Soy,
& Wheat Free



Third Party
Tested



Non-GMO

ru bloated?

Modern diets do not always sit well during digestion. Triphala is a 3 part solution that helps your body process food easier. Amla, Haritaki, and Bahera work together to provide your body with antioxidants for healthy digestion and optimal elimination.*

- Supports comfortable digestion*
- Herbal support for internal balance*
- Promotes gut health*
- Promotes healthy elimination*
- High source of antioxidants*
- Aids in calming the digestive tract*

* These statements have not been evaluated by the Food and Drug Administration. These products are not intended to diagnose, treat, cure or prevent any disease.

Triphala Drops

Digestive Support*



Supplement Facts

Serving Size: One full dropper (approx. 0.75 ml)
Servings Per Container: 80

| Amount Per Serving | % Daily Value |
|--|---------------|
| Proprietary Blend Herbal Extracts 100 mg | † |
| Organic Amla fruit, Organic Haritaki fruit, and Organic Bahera fruit | |

† Daily Value not established

Other ingredients: Glycerin, water and lemon flavors from a natural source.



Vegan



Dairy, Soy, & Wheat Free



Third Party Tested



Non-GMO



ru bloated?

Modern diets do not always sit well during digestion. Triphala is a 3 part solution that helps your body process food easier. Amla, Haritaki, and Bahera work together to provide your body with antioxidants for healthy digestion and optimal elimination.*

- Kid friendly!
- Supports comfortable digestion*
- Herbal support for internal balance*
- Promotes gut health*
- Promotes optimal elimination*
- High source of antioxidants*

Tulsi Drops

Mind, Body, & Spirit*



Supplement Facts

Serving Size: One full dropper (approx. 0.75 ml)
Servings Per Container: 80

| Amount Per Serving | % Daily Value |
|---|---------------|
| Holy Basil [†] leaf extract 100 mg | † |

† Daily Value not established

Other ingredients: Glycerin, water and lemon flavors from a natural source.



Vegan



Dairy, Soy,
& Wheat Free



Third Party
Tested



Non-GMO

ru resilient?

Meet Tulsi! Also referred to as 'liquid yoga', Tulsi (holy basil) is known for its ability to harmoniously balance the mind, body, and spirit while also supporting a healthy immune response. Our sweet alcohol-free Tulsi drops are family-friendly and are easily integrated into your daily routine.

- Kid friendly!
- Supports healthy immune function*
- Encourages a healthy stress response*
- Promotes a sense of focused calm*
- Whole body adaptogenic support*
- Liquid drops for flexible dosing*

* These statements have not been evaluated by the Food and Drug Administration. These products are not intended to diagnose, treat, cure or prevent any disease.

Wellness Jam™

Immune Support* + Healthy Aging



| Supplement Facts | |
|---|---------------|
| Serving Size 1 teaspoon (10 grams) | |
| Serving Per Container 30 | |
| Amount Per Teaspoon | % Daily Value |
| Calories 28 | |
| Total Carbohydrate 6 g | 2% |
| Sugars 4 g | † |
| Sodium 6.6 mg | <1% |
| Proprietary Blend 10 g | † |
| <small>Amla° fruit, Ami bark & leaf, Ashwagandha° root, Asparagus° root, Bael° fruit, Bamboo° manna, Butterfly pea, Cardamon pod, Catlrops root & leaf, Castor root, Catkins fruit, Cinnamon bark, Eaglewood bark, Honey, Indian gallnut fruit, Indian nightshade° leaf, Indian pennywort° leaf, Indian trumpet flower, Jivanti root, Kudzu root, Long pepper fruit, Malabar nut fruit, Mudgaparni whole herba, Myrobalan° fruit, Nagarmotha° root, Nutmeg seed, Prishniparni root, Puncture vine seed, Raw sugarcane concentrate, Sandalwood bark, Shalparni whole herba, Spreading hogweed° whole herba, Thatch grass aerial parts, Turmeric root</small> | |
| <small>Percent Daily Values are based on a 2,000 calorie diet. † Daily Value not established. ° Organically grown.</small> | |

- 
 Essential
Nutrients
- 
 Wheat &
Soy Free
- 
 Third Party
Tested
- 
 Non-GMO



Wellness Jam is a traditional Ayurvedic blend of 34 herbs & spices that promote vitality & longevity. Naturally sweetened with notes of spice, it has a jam like consistency packed with nutrients & antioxidants to help keep you nourished all day long. Our recipe features amla for its rich source of Vitamin C and immune support.*

- Great for all ages!
- Tasty immune support*
- Antioxidant packed jam*
- Ayurvedic herbal chyawanprash*
- Aids in daily nourishment*
- Holistic foundational health*

* These statements have not been evaluated by the Food and Drug Administration. These products are not intended to diagnose, treat, cure or prevent any disease.

Wright Salt™

Heart Healthy Salt Alternative*



| Nutrition Facts | |
|--------------------------------------|----------------------------------|
| 158 Servings Per Container | |
| Serving Size 1/4 tsp (approx. 1.5 g) | |
| Amount per serving | |
| Calories | 0 |
| | % Daily Value[§] |
| Total Fat 0 g | 0% |
| Sodium 295 mg | 13% |
| Total Carbohydrate 0 mg | 0% |
| Protein 0 g | 0% |
| Iodine 54 mcg | 36% |
| Magnesium 20 mg | 5% |
| Zinc 2.85 mg | 26% |
| Chloride 660 mg | 28% |
| Potassium 200 mg | 4% |

Not a significant source of saturated fat, cholesterol, trans fat, dietary fiber, total sugars, added sugars, vitamin D, calcium, and iron.

[§] The % Daily Value (DV) tells you how much a nutrient in a serving of food contributes to a daily diet. 2,000 calories day is used for general nutrition advice.

Ingredients: Sodium Chloride (Himalayan Pink Salt), Potassium Chloride, Magnesium Chloride, L-Lysine Hydrochloride, Zinc Chloride, Silicon Dioxide, Potassium Iodide Complex, Sodium Selenite, Copper Bisglycinate Chelate.



Essential
Nutrients



Dairy, Soy,
& Wheat Free



Third Party
Tested



Non-GMO

ru salty?

Season your food without compromising on your health with Wright Salt: a flavorful & nutritious alternative to high sodium salt. Wright Salt is a tasty multi-mineral blend featuring Himalayan sea salt, magnesium, potassium, and iodine for their high source of electrolytes. Swap out your daily salt with Wright Salt as a heart healthy choice!*

- Tasty heart healthy salt alternative*
- Electrolyte rich multimineral blend
- Flavorful substitute for salt
- Balanced mineral blend
- Great for heart healthy cooking*
- Nutritious alternative!

* These statements have not been evaluated by the Food and Drug Administration. These products are not intended to diagnose, treat, cure or prevent any disease.

Invigorating Massage Oil

Oil infused with spicy aromatics to enhance circulation and warm you up. Great for cold weather activities.



INGREDIENTS

Guggul extract in a base of organic sesame and flax oils, with essential oils of ginger and eucalyptus.

Active Body Massage Oil

Oil infused with an array of potent herbs to soothe sore joints and muscles, so you can get back to doing the activities you enjoy quicker.



INGREDIENTS

Ashwagandha, cedar, mung bean, long leaf sida, bael tree, pluchea, premna, valerian, sandalwood, shatavari, indian cardamom, forrest bitterberry, saussurea, boerhavia, tribulus, fennel, chinese chaste tree, sarivari, castor, black nightshade, oroxylum, blue wiss, three lobed leaf cowpea in a base of organic sesame oil.

Rejuvenating Hair Oil

Oil Infused with herbs which promote lustrous hair and a healthy scalp. Head massage is calming to the nervous system, and can promote better sleep.



INGREDIENTS

Amla, eclipta, gotu kola, licorice, and ashwagandha in a base of organic sesame oil.

Neem Skin Calming Oil

Neem leaf extract and cooling essential oils help calm, heal and rebalance irritated skin while supporting skin hydration and collagen production.*



INGREDIENTS

Neem extract in a base of organic sesame oil, with lavender essential oil and menthol (from peppermint).

Tulsi Daily Body Oil

Nourishing tulsi extract promotes skin hydration, healthy oil production, and skin elasticity.*



INGREDIENTS

Tulsi extract in a base of organic sesame oil.

Healthy Aging Body Oil

Antioxidant-rich amla and brahmi (gotu kola) extracts to help protect skin against environmental stressors, reduce uneven tone, and promote collagen production.*



INGREDIENTS

Amla and brahmi (gotu kola) extracts in base of organic sesame oil.

* These statements have not been evaluated by the Food and Drug Administration. These products are not intended to diagnose, treat, cure or prevent any disease.



AYUSHPET

All Natural Professional Pet Health



This hardworking adaptogen can assist with behavior support, calming a nervous fourlegged family member, or boosting your pet's overall vitality.*



Made with pure and potent organic ashwagandha root extract, these easy-to-use alcohol-free drops support your pets' energy, balanced sleep cycles, and overall wellness.*



A classic Ayurvedic blend of amla, haritaki, and bahera, work to promote optimal pet gut health, including comfortable digestion and elimination.*



Ideal for smaller and younger pets, Trifal drops are easy, alcohol-free, and absorb quickly for relief tailored to your pets' needs.*



This herbal supplement features neem for its ability to calm irritated skin.* It is blended with triphala for healthy digestion, which is key to your pet's healthy skin and shiny coat.*



Neem oil helps encourage your pets' skin health by calming dry and itchy spots on when applied topically to ears.*



AyushPet has a NEW Home on ruved!  or visit us online at ruved.com/collections/pet-supplements





This balanced herbal formula nourishes your pet's kidneys, promotes bladder tone and overall urinary function, to help them stay healthy into their later years.*



Complete all-natural solution for pet bladder, kidney, and urinary in a liquid formulation for easier dosing.*



Naturally potent daily muscle and joint support with pure curcumin extract from organically grown turmeric.*



Paingon supports muscle, joint, and tendon health and promotes comfort to help keep your pet active throughout their life.*



A holistic blend of liver-supporting herbs and nutrients for optimal liver function, gentle detoxification, as well as skin and coat health.*



A powerful combination of Ayurvedic herbs known to assist in cleansing the digestive system of harmful organisms and maintain your pet's gastrointestinal wellness.*



This curcumin-based powdered blend supports your pet's joint, brain, skin, and digestive health.*



A PAWSITIVELY NATURAL APPROACH TO PET HEALTH!



AYUSHPET



Visit www.holistic-pet-care.com for Dr. Tejinder Sodhi's WA based veterinarian clinics!
animalwellness@holistic-pet-care.com | Lynnwood: 425.771.6300 | Bellevue: 425.455.8900

AyushPet is a registered trademark of Ayush Herbs, USA.

Rooted In Truth

Our customers deserve to know what goes into their body. That's why we've put together a comprehensive portal so anyone can access our information on traceability, testing, product information, supply chain, and herb sourcing details.

In addition to our efforts towards transparency for our our customers, ruved is dedicated to making the world a better place. We continue to commit to the wellbeing of our growers and their communities by providing fair wages and education on sustainable practices. We also have invested in a free health clinic, clean water facilities in previously unserved areas, and educational opportunities for tribal communities in Himachal Pradesh.



Look for the QR on your ruved bottle or visit our rooted in truth page

Subscribe & Save

Save 10% on products you subscribe to! Don't worry about remembering to reorder when your supply runs low because we are here to help. Plus it is easy to modify or cancel subscriptions when things change.

Explore Our Blog



Wherever you are in your relationship with herbal products, we hope to take the pressure off picking which supplements you can add to your journey for balanced health. Our goal is to provide you the information you need to feel confident in the quality, effectiveness, and variety of your herbal supplements.

Affiliate Program

Earn up to 20% commission for every successful referral. Earn commissions from all qualifying purchases, not just the products you advertised. Plus, our competitive conversion rates help you maximize your earnings.



60 Day Satisfaction Guarantee



At ruved, Inc., we stand behind our products and quality controls. If for any reason you are not satisfied with an ruved® product you purchased from ruved.com, or one of our authorized sellers, you may request a refund or replacement product.

Join Our Newsletter

Stay up to date on seasonal sales, new product releases, blog posts, and all new and exciting things that are ruved!





Learn more at ruved.com 

Questions? Contact us at hello@ruved.com :)