



### Elektra-A/TR

Sample ID: G9J0417-03

Matrix: Industrial Hemp

Test ID: 1015976

Source ID:

Date Sampled: 10/16/19

Date Accepted: 10/16/19

*Citizen Kind Hemp Farm DBA Organic Green Roots*

### Results at a Glance

Total THC : 0.6068 %

Total CBD : 15.80 %

Total Terpenes : 1.725 % PASS

*Russell Kuhfeld*

Russell Kuhfeld  
Quality Officer - 12/3/2019



### Elektra-A/TR

Sample ID: G9J0417-03

Matrix: Industrial Hemp

Test ID: 1015976

Source ID:

Date Sampled: 10/16/19

Date Accepted: 10/16/19

*Citizen Kind Hemp Farm DBA Organic Green Roots*

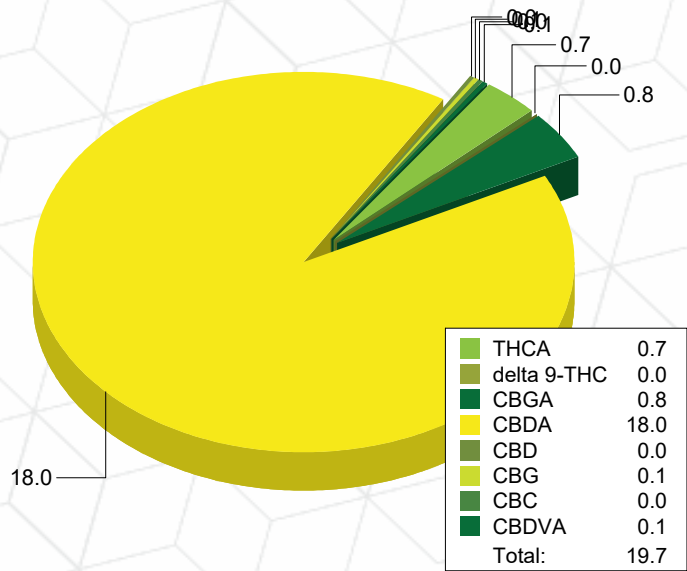
### Potency Analysis

Date/Time Extracted: 10/18/19 12:54

Analysis Method/SOP: 215

Batch Identification: 1942081

Cannabinoids	LOQ (%)	% by Wt.	mg/g	Cannabinoids Profile
Total THC	0.009080	0.6068	6.068	
Total CBD	0.008300	15.80	158	
THCA	0.002920	0.6769	6.769	
delta 9-THC	0.009080	0.01318	0.1318	
delta 8-THC	0.004490	< LOQ	< LOQ	
Exo-THC	0.004175	< LOQ	< LOQ	
THCV	0.005055	< LOQ	< LOQ	
THCVA	0.001885	< LOQ	< LOQ	
CBD	0.006220	0.03574	0.3574	
CBDA	0.008300	17.98	179.8	
CBDV	0.005000	< LOQ	< LOQ	
CBDVA	0.001640	0.07485	0.7485	
CBN	0.002990	< LOQ	< LOQ	
CBG	7.900E-4	0.06177	0.6177	
CBGA	7.900E-4	0.8332	8.332	
CBC	0.008965	0.04599	0.4599	



Total THC = delta 9-THC + (THCA \* 0.877)

Total CBD = CBD + (CBDA \* 0.877)

For Potency only delta 9-THC, THCA, CBD, CBDA are ORELAP accredited analytes.

Water Activity Action Level is 0.65. Results above 0.65 fail state testing requirements and will be highlighted Red.

Russell Kuhfeld  
Quality Officer - 12/3/2019



### Elektra-A/TR

Sample ID: G9J0417-03

Matrix: Industrial Hemp

Test ID: 1015976

Source ID:

Date Sampled: 10/16/19

Date Accepted: 10/16/19

### Citizen Kind Hemp Farm DBA Organic Green Roots

#### Terpene Analysis

Date/Time Extracted: 10/18/19 12:54

Analysis Method/SOP: 204

Monoterpenes	%	mg/g	Monoterpenes	%	mg/g
Camphene	< LOQ	< LOQ	Camphor	< LOQ	< LOQ
3-Carene	< LOQ	< LOQ	alpha-Cedrene	< LOQ	< LOQ
Cedrol	< LOQ	< LOQ	Endo-fenchyl alcohol	0.01216	0.1216
Eucalyptol	< LOQ	< LOQ	Fenchone	< LOQ	< LOQ
Geraniol	< LOQ	< LOQ	Geranyl acetate	< LOQ	< LOQ
Hexahydrothymol	< LOQ	< LOQ	Isoborneol	< LOQ	< LOQ
Isopulegol	< LOQ	< LOQ	Limonene	0.02693	0.2693
Linalool	0.03437	0.3437	p-Mentha-1,5-diene	< LOQ	< LOQ
beta-Myrcene	0.7579	7.579	Ocimene	< LOQ	< LOQ
alpha-Pinene	0.1402	1.402	beta-Pinene	0.05509	0.5509
Pulegone	< LOQ	< LOQ	Sabinene	< LOQ	< LOQ
Sabinene hydrate	< LOQ	< LOQ	gamma-Terpinene	< LOQ	< LOQ
alpha-Terpinene	< LOQ	< LOQ	Terpineol	0.02375	0.2375
Terpinolene	< LOQ	< LOQ	B Y-Terpineol	< LOQ	< LOQ
Nerol	< LOQ	< LOQ	A-Terpineol	0.02375	0.2375
Borneol	< LOQ	< LOQ	Ocimene isomer II	< LOQ	< LOQ
Ocimene isomer I	< LOQ	< LOQ			
Sesquiterpenes	%	mg/g	Sesquiterpenes	%	mg/g
alpha-Bisabolol	0.1085	1.085	beta-Caryophyllene	0.1656	1.656
Caryophyllene Oxide	0.02268	0.2268	Guaiol	0.06361	0.6361
alpha-Humulene	0.04657	0.4657	trans-Nerolidol	0.02270	0.227
Valencene	< LOQ	< LOQ	cis-Nerolidol	0.2447	2.447
<b>Total Terpenes</b>	<b>1.725</b>	<b>17.25</b>			

<LOQ - Results below the Limit of Quantitation - Terpenes profile/analysis are not accredited to ORELAP TNI 2009 Quality Standards.

Russell Kuhfeld  
Quality Officer - 12/3/2019



### Elektra-A/TR

Sample ID: G9J0417-03

Matrix: Industrial Hemp

Test ID: 1015976

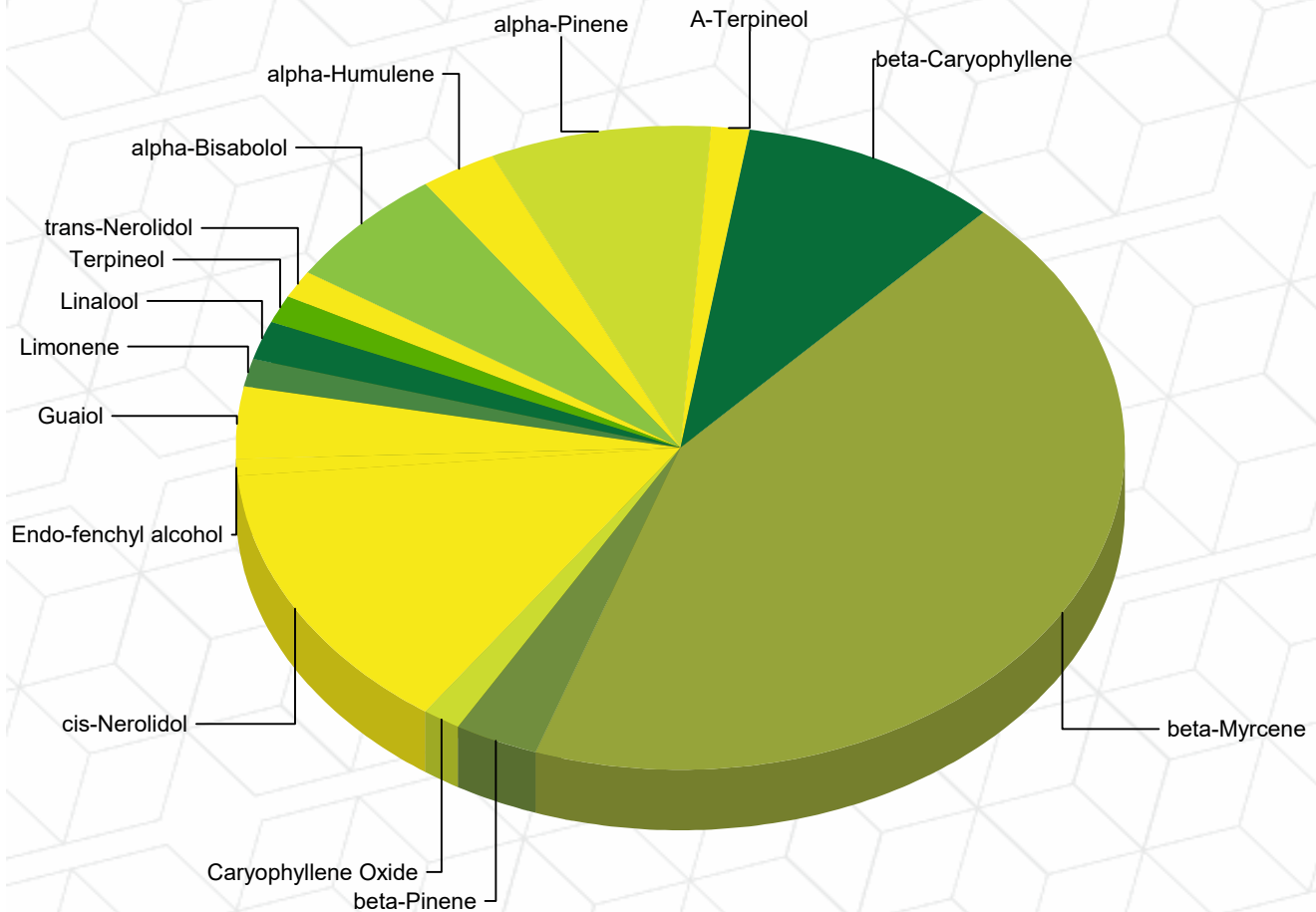
Source ID:

Date Sampled: 10/16/19

Date Accepted: 10/16/19

*Citizen Kind Hemp Farm DBA Organic Green Roots*

### Terpene Profile



### Percentage of Total Terpenes Identified

*Russell Kuhfeld*

Russell Kuhfeld  
Quality Officer - 12/3/2019



### Quality Control Potency

Batch: 1942081 - 215-Hemp

Blank(1942081-BLK1)						
Analyte	Result	LOQ	Units	%Recovery Limits	Extracted	Analyzed
THCA	< LOQ	0.002920	%		10/18/19 12:54	10/21/19 17:47
delta 9-THC	< LOQ	0.009080	%		10/18/19 12:54	10/21/19 17:47
delta 8-THC	< LOQ	0.004490	%		10/18/19 12:54	10/21/19 17:47
Exo-THC	< LOQ	0.004175	%		10/18/19 12:54	10/21/19 17:47
THCV	< LOQ	0.005055	%		10/18/19 12:54	10/21/19 17:47
THCVA	< LOQ	0.001885	%		10/18/19 12:54	10/21/19 17:47
CBD	< LOQ	0.001555	%		10/18/19 12:54	10/21/19 17:47
CBDA	< LOQ	0.002075	%		10/18/19 12:54	10/21/19 17:47
CBDV	< LOQ	0.005000	%		10/18/19 12:54	10/21/19 17:47
CBDVA	< LOQ	0.001640	%		10/18/19 12:54	10/21/19 17:47
CBN	< LOQ	0.002990	%		10/18/19 12:54	10/21/19 17:47
CBG	< LOQ	7.900E-4	%		10/18/19 12:54	10/21/19 17:47
CBGA	< LOQ	7.900E-4	%		10/18/19 12:54	10/21/19 17:47
CBC	< LOQ	0.008965	%		10/18/19 12:54	10/21/19 17:47

Reference(1942081-SRM1)						
Analyte	% Recovery	LOQ	Units	%Recovery Limits	Extracted	Analyzed
THCA	82.1	0.002920	%	80-120	10/18/19 12:54	10/21/19 17:47
delta 9-THC	104	0.009080	%	80-120	10/18/19 12:54	10/21/19 17:47
CBD	105	0.001555	%	80-120	10/18/19 12:54	10/21/19 17:47
CBDA	90.5	0.002075	%	80-120	10/18/19 12:54	10/21/19 17:47

### Terpene Analysis

Batch: 1942081 - 215-Hemp

Blank(1942081-BLK2)						
Analyte	Result	LOQ	Units	%Recovery Limits	Extracted	Analyzed
alpha-Bisabolol	< LOQ	8.000E-4	%		10/18/19 12:54	10/19/19 13:13
Camphene	< LOQ	8.000E-4	%		10/18/19 12:54	10/19/19 13:13
Camphor	< LOQ	8.000E-4	%		10/18/19 12:54	10/19/19 13:13
3-Carene	< LOQ	8.000E-4	%		10/18/19 12:54	10/19/19 13:13
beta-Caryophyllene	< LOQ	8.000E-4	%		10/18/19 12:54	10/19/19 13:13
Caryophyllene Oxide	< LOQ	8.000E-4	%		10/18/19 12:54	10/19/19 13:13
alpha-Cedrene	< LOQ	8.000E-4	%		10/18/19 12:54	10/19/19 13:13
Cedrol	< LOQ	8.000E-4	%		10/18/19 12:54	10/19/19 13:13
Endo-fenchyl alcohol	< LOQ	8.000E-4	%		10/18/19 12:54	10/19/19 13:13
Eucalyptol	< LOQ	8.000E-4	%		10/18/19 12:54	10/19/19 13:13
Fenchone	< LOQ	8.000E-4	%		10/18/19 12:54	10/19/19 13:13
Geraniol	< LOQ	8.000E-4	%		10/18/19 12:54	10/19/19 13:13
Geranyl acetate	< LOQ	8.000E-4	%		10/18/19 12:54	10/19/19 13:13

Russell Kuhfeld  
Quality Officer - 12/3/2019



### Quality Control Terpene Analysis (Continued)

#### Batch: 1942081 - 215-Hemp (Continued)

Blank(1942081-BLK2)						
Analyte	Result	LOQ	Units	%Recovery Limits	Extracted	Analyzed
Guaiol	< LOQ	8.000E-4	%		10/18/19 12:54	10/19/19 13:13
Hexahydrothymol	< LOQ	8.000E-4	%		10/18/19 12:54	10/19/19 13:13
alpha-Humulene	< LOQ	8.000E-4	%		10/18/19 12:54	10/19/19 13:13
Isoborneol	< LOQ	8.000E-4	%		10/18/19 12:54	10/19/19 13:13
Isopulegol	< LOQ	8.000E-4	%		10/18/19 12:54	10/19/19 13:13
Limonene	< LOQ	8.000E-4	%		10/18/19 12:54	10/19/19 13:13
Linalool	< LOQ	8.000E-4	%		10/18/19 12:54	10/19/19 13:13
p-Mentha-1,5-diene	< LOQ	8.000E-4	%		10/18/19 12:54	10/19/19 13:13
beta-Myrcene	< LOQ	8.000E-4	%		10/18/19 12:54	10/19/19 13:13
trans-Nerolidol	< LOQ	8.000E-4	%		10/18/19 12:54	10/19/19 13:13
Ocimene	< LOQ	8.000E-4	%		10/18/19 12:54	10/19/19 13:13
alpha-Pinene	< LOQ	8.000E-4	%		10/18/19 12:54	10/19/19 13:13
beta-Pinene	< LOQ	8.000E-4	%		10/18/19 12:54	10/19/19 13:13
Pulegone	< LOQ	8.000E-4	%		10/18/19 12:54	10/19/19 13:13
Sabinene	< LOQ	8.000E-4	%		10/18/19 12:54	10/19/19 13:13
Sabinene hydrate	< LOQ	8.000E-4	%		10/18/19 12:54	10/19/19 13:13
gamma-Terpinene	< LOQ	8.000E-4	%		10/18/19 12:54	10/19/19 13:13
alpha-Terpinene	< LOQ	8.000E-4	%		10/18/19 12:54	10/19/19 13:13
Terpineol	< LOQ	8.000E-4	%		10/18/19 12:54	10/19/19 13:13
Terpinolene	< LOQ	8.000E-4	%		10/18/19 12:54	10/19/19 13:13
Valencene	< LOQ	8.000E-4	%		10/18/19 12:54	10/19/19 13:13
B Y-Terpineol	< LOQ	8.000E-4	%		10/18/19 12:54	10/19/19 13:13
Nerol	< LOQ	8.000E-4	%		10/18/19 12:54	10/19/19 13:13
A-Terpineol	< LOQ	8.000E-4	%		10/18/19 12:54	10/19/19 13:13
cis-Nerolidol	< LOQ	8.000E-4	%		10/18/19 12:54	10/19/19 13:13
Borneol	< LOQ	8.000E-4	%		10/18/19 12:54	10/19/19 13:13
Ocimene isomer II	< LOQ	8.000E-4	%		10/18/19 12:54	10/19/19 13:13
Ocimene isomer I	< LOQ	8.000E-4	%		10/18/19 12:54	10/19/19 13:13

Reference(1942081-SRM2)						
Analyte	% Recovery	LOQ	Units	%Recovery Limits	Extracted	Analyzed
beta-Caryophyllene	112	7.896E-4	%	70-130	10/18/19 12:54	10/19/19 13:56
alpha-Humulene	123	7.896E-4	%	70-130	10/18/19 12:54	10/19/19 13:56
Limonene	113	7.896E-4	%	70-130	10/18/19 12:54	10/19/19 13:56
beta-Myrcene	96.5	7.896E-4	%	70-130	10/18/19 12:54	10/19/19 13:56

Russell Kuhfeld  
Quality Officer - 12/3/2019