

SWIVEL BY



SIDETRAK

User Manual



Patent Pending sidetrak.com



SIDETRAK

Welcome to a more productive you! No matter where you work from, it may be at the office, at home, or even a coffee shop, we would love to see your new multi-monitor setup!



sidetrak.com



[@sidetrakmonitor](https://www.facebook.com/sidetrakmonitor)



[@sidetrakmonitor](https://www.instagram.com/sidetrakmonitor)



[@sidetrak.monitor](https://twitter.com/sidetrak.monitor)

Contact Us

customerservice@sidetrak.com

(240) 580-8725

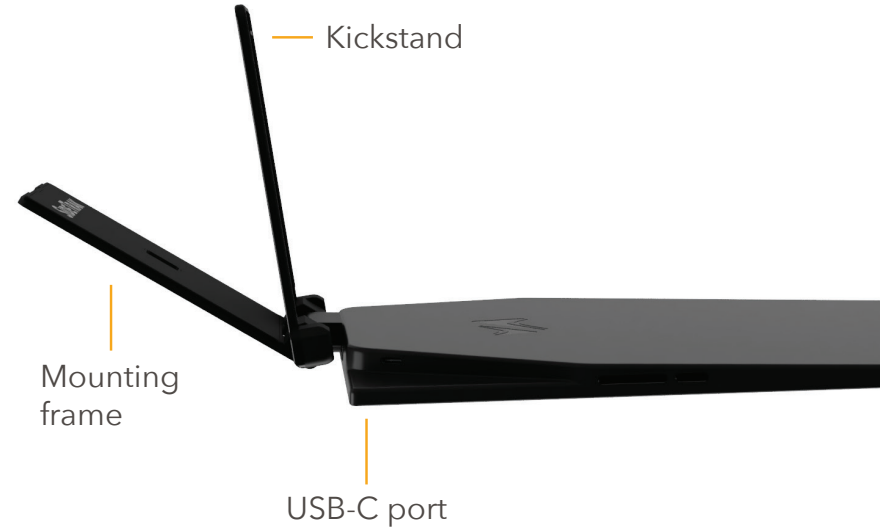
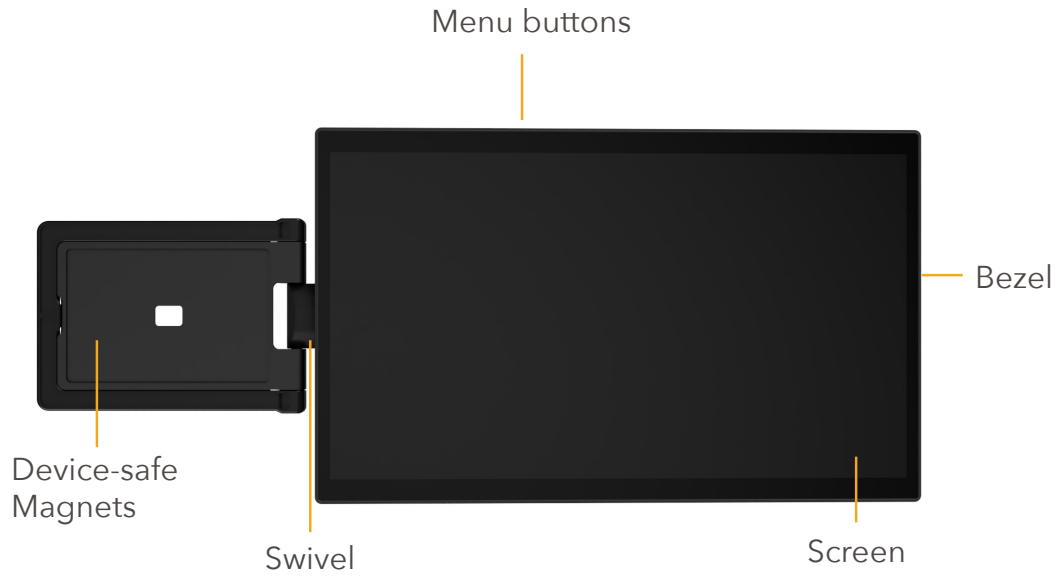
Contents



4	Component List
5	Installation
12	Features
14	Second Monitor Setup
18	Configuration for PC
19	Configuration for Mac
20	FAQs
22	Troubleshooting
23	Technical Specifications
24	Limited Liability Warranty

Component List

Swivel



Optional USB wall charger



USB-C to USB-C cord with USB-A adapter Short



USB-C to USB-C cord with USB-A adapter Long



Two Metal Plates



Removal Tool



Dual unit adapter tool
*Not needed for single unit



Connecting Your SideTrak Swivel

1 Check the ports on your laptop.

To connect your SideTrak Swivel use the USB-C to USB-C cord.

Check your USB-C port for the symbols shown in the table below. If you have one of the green checked symbols, then your USB-C port is compatible.

NOTE: MacBook ports are compatible even if there are no symbols next to it.



Watch the installation video here.



USB-C to USB-C cord

	✓		✓		✗		✗
	✓		✓		✗		✗
	✓	All Apple laptops are compatible	✓		✗		✗

Installation cont.

2

If you don't have a compatible USB-C port on your laptop or don't have a USB-C port at all, then you will need to download the DisplayLink driver.

However, if you have a Chrome laptop that doesn't have a USB-C port, you do not need to download the DisplayLink.



Download
DisplayLink
Driver

3

If you are setting up a triple screen, you may need to provide additional power to turn on both monitors. Use the optional USB wall charger to provide supplemental power to your monitors.

If your laptop only has one USB-C port, you may need to use a hub that provides two USB-C ports. Check out SideTrak USB-C Hub.



Purchase SideTrak
USB-C Hub

Troubleshooting Issues? See page 17.

Attach SideTrak Swivel to Your Laptop

1 Close laptop.

Make sure your SideTrak is unplugged from the laptop and the laptop is closed.

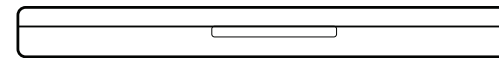
Left-side Attachment.

To put your monitor on the left of your laptop, make sure the opening is facing away from you.



Right-side Attachment.

To put the monitor on the right of your laptop, make sure the laptop opening is facing you.



2 Align mounting guide.

Use the mounting guide that comes in your box to attach the metal plate to either the left or the right of your laptop.

If you have the triple screen setup you will need to attach your SideTrak to both the left AND the right side of your laptop.

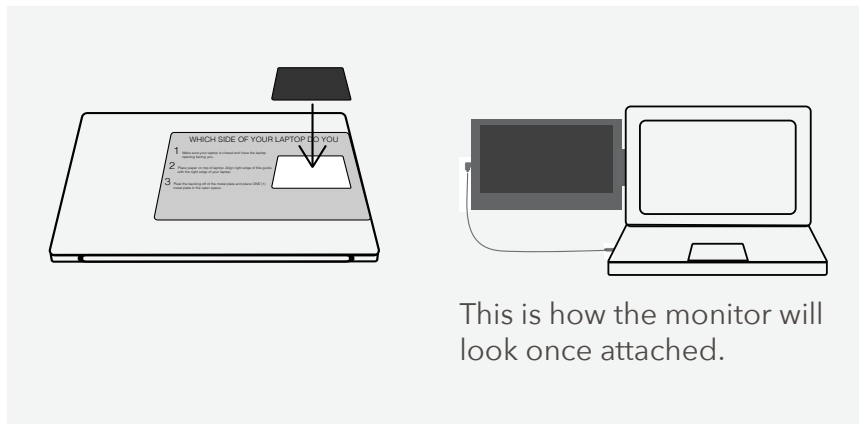
If you have a single monitor but would like to have a triple screen setup you can buy a second swivel.



Installation cont.

Left-side Attachment.

Place the mounting guide on top of your laptop and move it all the way to the left side of your laptop so that the right edge of the mounting guide aligns with the left edge of your laptop.



Right-side Attachment.

Place the mounting guide on top of your laptop and move it all the way to the right side of your laptop so that the right edge of the mounting guide aligns with the right edge of your laptop.



1 Place metal plate.

Peel the backing from the metal plate and place ONE (1) metal plate in the open space. Make sure to align the SideTrak logo in the bottom right corner.

Apply pressure for 10 seconds and remove the mounting guide from your laptop. Before attaching your SideTrak, give the metal plate a few minutes to allow the adhesive to properly grip your laptop.





NOTE: The metal plate will be semi-permanently adhered to your laptop. If you would not like the metal plate adhered directly onto your laptop, we recommend using a plastic laptop case or skin.



Learn more about setting up your triple screen.

If you are setting up the triple screen, flip page for second metal plate placement before attaching your Swivel.

4

Attach SideTrak Swivel onto laptop.

After giving the metal plate a few minutes to adhere, clip the monitor to the metal plate on your laptop.

It is easiest to slip when the monitor and mounting frame aren't folded. Wiggle the monitor's mounting frame, if it pops off it is not fully clicked in. You will hear a loud click when it is properly placed. Then, simply plug in and you'll be all set to start using your new SideTrak monitor!

If you DID NOT purchase a triple screen pack, but have just installed a second plate for your second monitor (purchased another SideTrak single to create a triple setup), flip to page 14 to adjust your monitors so they can nest close on your laptop for easy transport.

Installation cont.

Triple Screen Setup



Attach first metal plate!

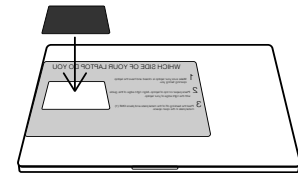
Using the single screen attachment guide (opposite side) attach first screen before continuing.



1

Rotate and align laptop.

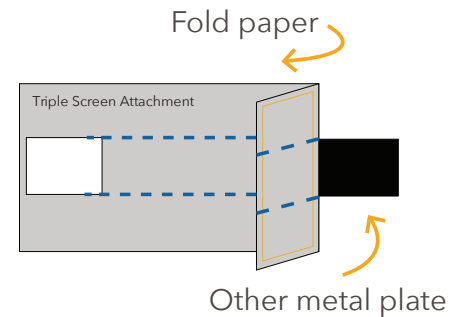
Rotate your laptop, so the metal plate you just attached is on your right. Align the left edge of this paper to the left edge of your laptop.



2

Fold guide for metal plate spacing.

Fold the paper on the solid blue line. If needed fold the paper in a different spot until the metal plate is revealed.

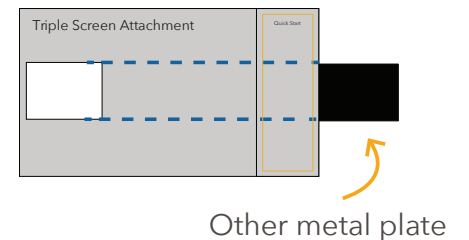


3

Align to metal plate.

Align the blue dotted line to the top and bottom of your already placed metal plate.

Optional: Use tape to keep the paper in place.





4 Place metal plate.

Peel the backing off of ONE (1) metal plate and place it in the open space on this guide. Apply light pressure for 10 seconds. Remove guide from laptop.

5 Attach SideTrak Swivel onto laptop.

Clip your monitor to the metal plate on your laptop. Use the small opening on the monitor's mounting frame to help guide you.

Through the open space on the mounting frame, you should be able to see the line that goes across the metal plate. It's easiest to clip when the monitor is fully extended. You will hear a loud click when its properly placed.

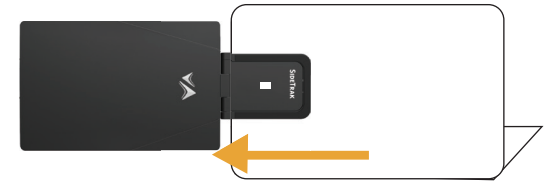
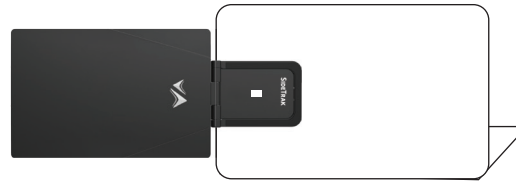
6 Now plug in and you're ready to use your SideTrak!



Features

Slide

SideTrak's magnets glide across the attached metal plate so you can slide your SideTrak out and adjust to your viewing preferences.



Swivel

Pivot screen forward to set screen to your preferred view and be ready to work in seconds. Pivot screen 180° backward to have screen lay over laptop for easy packing and travel.

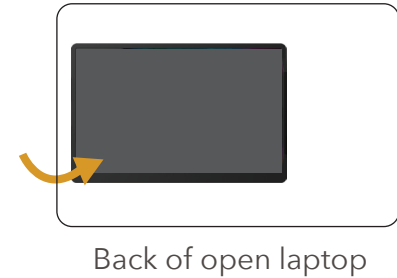
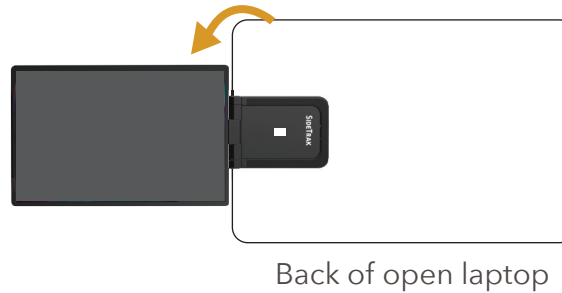


You can pivot and swivel the SideTrak screen to adjust to your viewing preferences. Move forward or backward, upward or downward.



Rotate

Swivel or rotate your screen 180° to easily share your screen with others. Your screen will auto-rotate when you swivel it!



If you have any issues with auto-rotate, here is how you can manually rotate your screen:

- **MacBook:** Launch system Preferences, hold down Command+Option keys WHILE clicking on “Display” icon. Look for newly visible “Rotation” drop down menu and select 180°.
- **PC:** Right click to select “Display settings” from the dialogue box. Select “Landscape (flipped)” from orientation options. You may be able to use shortcut: CTRL+ALT+arrow keys.

Kickstand

SideTrak Swivel includes a kickstand you can use to support your laptop’s hinge. Simply clip out the kickstand from the mounting frame and adjust the kickstand to your preferred viewing angle.



Second Monitor Setup

If you purchased the second monitor separately

When you purchase the triple screen setup, the monitors come setup ready for installation. If you purchased the second monitor separately, one monitor will need a raised mounting plate while the other is flush with (will lay flat against) the screen, as shown in the image to the right. Adjusting the mounting frame will help the monitors nest with each other when closed.

If you purchased the second monitor separately, both mounting plates will be the same, both will be flushed with the screen when closed.

In order for these monitors to nest with each other when closed, you will have to raise one of the monitor's mounting frames. Follow the steps on the next page to raise the mounting frame.

Change only ONE of your monitors. The other monitor's mounting frame must remain flush with the screen.



Raised mounting frame

Frame flush with screen

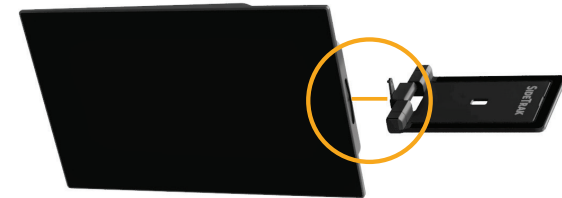
Steps to raising your mounting frame

Remember to only do this to ONE of your monitors and only if you bought monitors separately and not in a triple screen pack.

- 1 Turn the mounting frame perpendicular to the monitor. This will reveal two screws on each side of the monitor.



- 2 Use the provided adapter tool to unscrew the 2 screws, one from each side of the mounting frame. This will separate out the mounting frame from the monitor.



- 3 Turn the separated mounting frame 180°.



Before turning 180°



After turning 180°

- 4 Put the screws back in.

Once reattached, you can now attach the second monitor to your laptop the same way you did the first one but on the opposite side of the laptop.

Follow instructions on page 7-9 to install monitor.

Installation cont.

Nesting the monitors

1

Attach Swivels to laptop.

Follow instructions on page 9 to attach Swivels.



2

Fold monitor closest to laptop.

The monitor that has the mounting frame flushed with the screen should be the first monitor closed.



3

Fold second monitor (with raised frame).

Closed the monitor with the raised mounting frame. This will allow the monitors to nest nicely.



NOTE: If you close the monitor with the raised mounting frame first, it will not nest nicely and will look like this:





Everyday Use: How to attach and detach your SideTrak

SideTrak's metal plate will stay on your laptop, making it easy for you to attach and detach your SideTrak whenever you need!

To reattach your SideTrak, angle the SideTrak slightly, "hooking" the mounting frame to the top of the metal plate. You should feel SideTrak click onto the magnets. Wiggle the monitor's mounting frame and if it pops off then it is not fully clicked in. You will hear a loud click when it is properly placed.



Quick Tip: Your SideTrak doesn't need to be removed to store with your laptop. SideTrak stays securely attached to the metal plate and has a protective cushion for your laptop.

To permanently remove the metal plate:

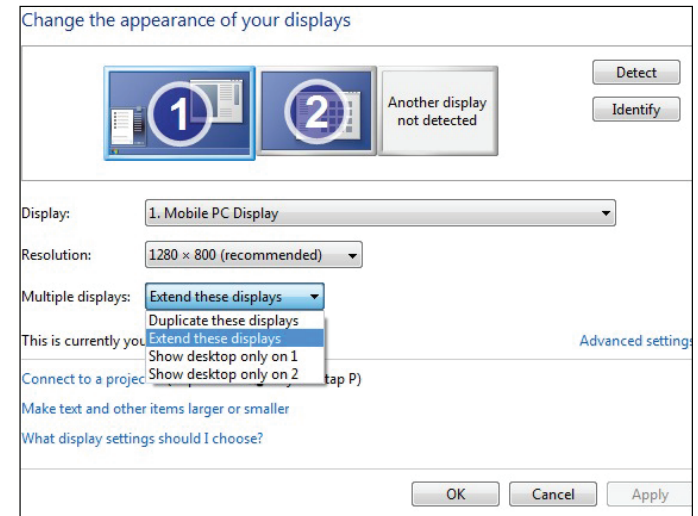
Use the plastic removal tool included with your SideTrak to remove adhesive from the laptop surface.

Follow the steps above to reattach or to use your SideTrak with a different laptop, use the spare metal plate included!

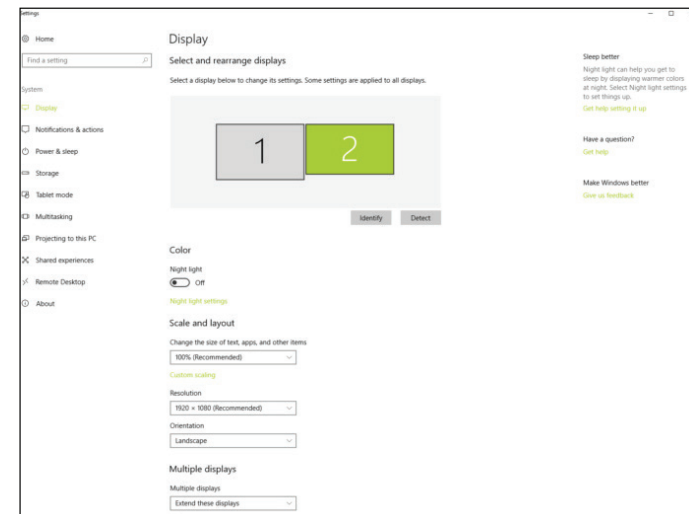
Configuration for PC

Configuring a second Screen on a PC

- 1** Right-click blank part of laptop home screen.
- 2** Select "Screen Resolution" from the drop-down menu.
This will pull up a display settings dialogue box. The SideTrak should automatically register as screen 2.
- 3** Drag and drop screen icons to match your setup.
I.e. If your SideTrak is installed to slide out to the left of your laptop, arrange your screens to reflect this.
- 4** Select "Extend these displays" to use the SideTrak as an extension of your laptop.
Best for personal use.
- 5** Select "Duplicate these displays" to use the SideTrak as a copy of your laptop screen.
Best for presenting.



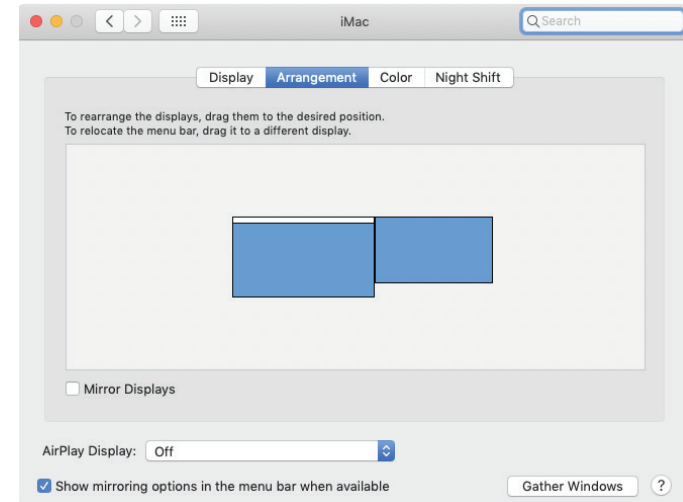
Display settings dialogue box on Windows 7 and older.



Display settings dialogue box on Windows 10 and newer.

Configuring a second Screen on a Mac

- 1** Select "System Preferences" icon from dock.
- 2** Select "Displays" from the menu that appears.
This will pull up a display settings dialogue box. The SideTrak should automatically register as screen 2.
- 3** Select "Arrangement" tab at the top of the window, then drag and drop the screen icons to match your setup..
If your SideTrak is installed to slide out to the left of your laptop, arrange your screens to reflect this.
- 4** The SideTrak will automatically be set up to work as an extension of your laptop.
Best for personal use.
- 5** Select "Mirror displays" to use the SideTrak as a copy of your laptop screen.
Best for presenting.



Display settings dialogue box on Mac operating systems.



FAQs

Q Do I need a download?
No download required! Just plug in and go.

**Q Is my laptop compatible with SideTrak?
Check the ports on your laptop (reference the symbols shown on page 6).**

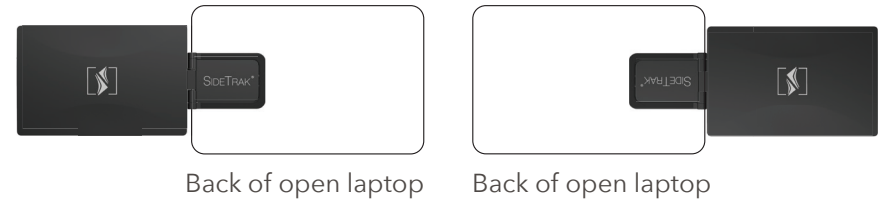
If you have a USB-C port with any of the symbols shown on page 6, then your laptop is compatible and you will only need to use one cord.

If you don't have a compatible USB-C port on your laptop or don't have a USB-C port at all, then you will need to download the DisplayLink driver.

However, if you have a Chrome laptop that doesn't have a USB-C port, you do not need to download the DisplayLink.

Q Will the SideTrak work with Mac and PC?
SideTrak should be compatible with all Mac and PC laptops manufactured after 2015.

Q Can the SideTrak be placed on the left of my laptop?
Yes! Simply attach SideTrak monitor frame aligned with the left edge of your laptop.



Q Can the SideTrak flip around?
Yes! Just swivel or rotate the screen 180° so you can easily share your screen.



Q What if I don't want a metal plate on my laptop?

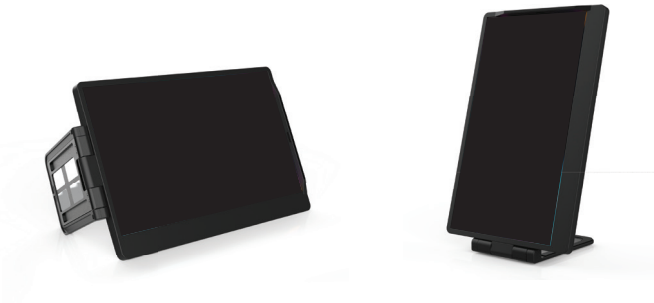
To continue using SideTrak with your laptop, the metal plate will need to remain on your laptop.

A laptop case, skin or cover is compatible with SideTrak, and will also avoid sticking plates directly onto the laptop itself.

To permanently remove the metal plate, use the included removal tool.

Q Can the SideTrak work when not attached to a laptop (by magnet)?

Yes, you can use SideTrak as a freestanding monitor in landscape or portrait mode.



Q Is SideTrak's magnets safe to have near other electronic devices and credit cards?

Yes. The SideTrak uses device-safe magnets that will not interfere with screens or data.

Q What if I need a new cord or a new metal plate?

Replacement parts can be purchased at www.sidetrak.com

You may need a new USB-C to USB-C cord.

Follow the link
to sidetrak.com



Q What warranty is included with the SideTrak?

The SideTrak includes a 1-year limited liability warranty.

Troubleshooting

Q SideTrak will not turn on and/or load.

1. Make sure your laptop is turned on and open.
2. If possible, update your computer to the latest software.
3. Make sure you have a compatible USB-C port (check page 6) to use the USB-C to USB-C cord.
4. Test different ports on your computer when plugging in your SideTrak.
5. Try the SideTrak on another computer (preferably a computer with a different operating system).
6. Test the SideTrak with a different USB-C cord if you have an extra.
7. If you are still having trouble with your SideTrak, contact us. We are happy to help you!

Q I accidentally put the metal plate in the wrong place.

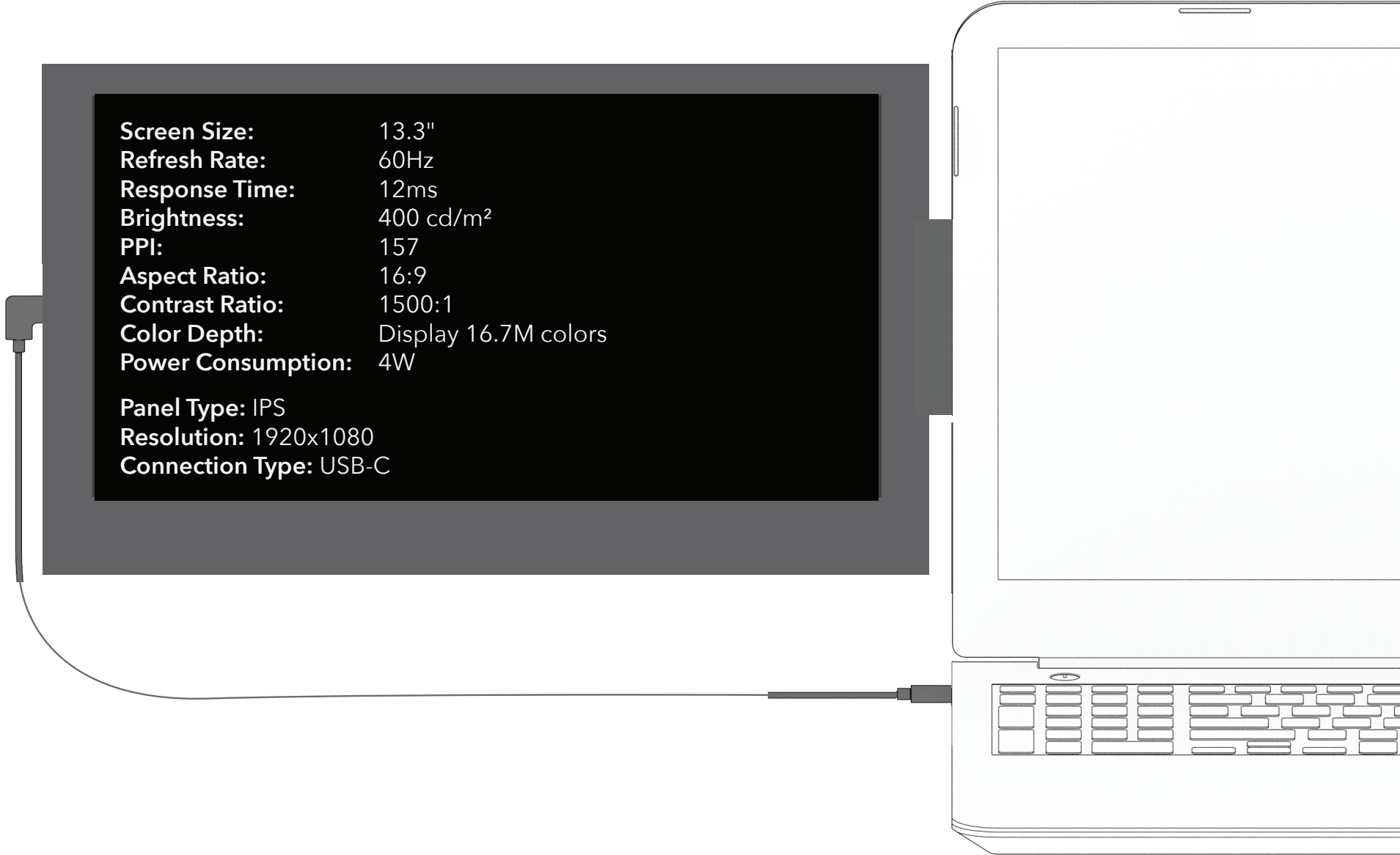
1. Use included removal tool to remove adhesive from laptop surface.
2. Use spare magnet set provide to re-attach metal plate in desire location.

Q SideTrak won't clip onto metal plate.

1. It is easiest to clip when the monitor and mounting frame aren't folded.
2. Line up SideTrak with the top of the metal plate, "hooking" the mounting frame to the top of the metal plate.
3. Wiggle the monitor's mounting frame and if it pops off then it is not fully clicked in.
4. You will hear a loud click when properly placed.

For more troubleshooting issues please visit our troubleshooting page:
support.sidetrak.com/knowledge/troubleshooting

Technical Specifications



Screen Size:	13.3"
Refresh Rate:	60Hz
Response Time:	12ms
Brightness:	400 cd/m ²
PPI:	157
Aspect Ratio:	16:9
Contrast Ratio:	1500:1
Color Depth:	Display 16.7M colors
Power Consumption:	4W
Panel Type:	IPS
Resolution:	1920x1080
Connection Type:	USB-C

Limited Liability Warranty

This limited warranty gives you specific legal rights and you may also have other rights. Which vary from state to state. The limited warranty can also be found online at sidetrak.com/pages/warranty and in the documentation we provide with this product. We warrant that during the warranty period, the product will be free from defects in materials and workmanship. We limit the duration and remedies of all implied warranties, including without limitation the warranties of merchantability and fitness for a particular purpose to the duration of this express limited warranty. Some states do not allow limitations of how long an implied warranty lasts, so the above limitation may not apply to you. Our responsibility for defective goods is limited to replacement or refund as described below in this warranty statement.

Q Who may use this warranty?

Stand Steady Company, LLC located at address 8315 Lee Highway, Suite 350, Fairfax, VA 22031 (“we”) extend this limited warranty only to the consumer who originally purchased the product (“you”). It does not extend to any subsequent owner or other transferee of the product.

Q What does this warranty cover?

This limited warranty covers defected in materials and workmanship of the SideTrak Monitor (the “product”) for the Warranty Period as defined below.

Q What does this warranty not cover?

This limited warranty does not cover any damage due to: (a) transportation; (b) storage; (c) improper use; (d) failure to follow the product instructions or to preform any preventative maintenance; (e) modifications; (f) unauthorized repair; (g) normal wear and tear; or (h) external causes such as accidents, abuse, or other actions or events beyond our reasonable control.

Q What is the period of coverage?

This limited warranty starts on the date of your purchase and lasts for 1 year (the “Warranty Period”). The Warranty Period is not extended if we replace or repair the product or extend a refund. We may change the availability of this limited warranty at our discretion, but any changes will not be retroactive.

Q What are your remedies under this warranty?

With respect to any defective product during the Warranty Period, we will, in our sole discretion, either: (a) replace or repair such product (or the defective part) free of charge or (b) refund the purchase price of such product. We will also pay for shipping and handling fees to return the repaired or replacement product to you if we elect to replace or repair the defective product.

Q How do you obtain warranty service?

To obtain warranty service, you must call 240-580-8725 or email our customer service department at customerservice@sidetrak.com during the Warranty Period to receive warranty service. No warranty service will be provided without customer contact within the Warranty Period.

Q Limitation of Liability

The remedies described above are your sole and exclusive remedies and our entire liability for any breach of this limited warranty. Our liability shall under no circumstances exceed the actual amount paid by you for the defective product, nor shall we under any circumstances be liable for any consequential, incidental, special or punitive damages or losses, whether direct or indirect. Some states do not allow the exclusive or limitation of incidental or consequential damages, so the above or exclusion may not apply to you.



SIDETRAK

YOUR EVERYDAY, REIMAGINED