
Read all instructions BEFORE assembly and USE of this product.
KEEP INSTRUCTIONS FOR FUTURE USE



The Clear-View™

bassinets jumelés CO-SLEEPER^{MD}
de ARM'S REACH^{MD}
CO-SLEEPER® bassinets de ARM'S REACH®
como cama adosada

⚠ WARNING: Failure to follow these warnings and instructions could result in serious injury or death.

⚠ AVERTISSEMENT : Le non-respect de ces avertissements et de ces instructions pourrait causer des blessures graves, voire mortelles.

⚠ ADVERTENCIA: El incumplimiento de estas advertencias e instrucciones puede resultar en lesiones graves o la muerte.

INSTRUCTION MANUAL

MANUEL D'INSTRUCTIONS

MANUAL DE INSTRUCCIONES

KEEP THIS BOOKLET HANDY FOR FUTURE REFERENCE
GARDER CE LIVRET À PORTÉE DE MAIN POUR RÉFÉRENCE FUTURE
CONSERVE ESTE LIBRO PARA REFERENCIAS FUTURAS

Read all instructions BEFORE assembly and USE of this product.

⚠️ WARNING: Failure to follow these warnings and instructions could result in serious injury or death.

SUFFOCATION HAZARD: Discard all packing materials immediately after opening. Plastic bags and ties may cause suffocation or choking.

- FALL HAZARD - To help prevent falls, do not use this product when infant begins to push up on hands and knees or has reached manufacturer's recommended maximum weight of 18 lbs, whichever comes first.

SUFFOCATION HAZARD

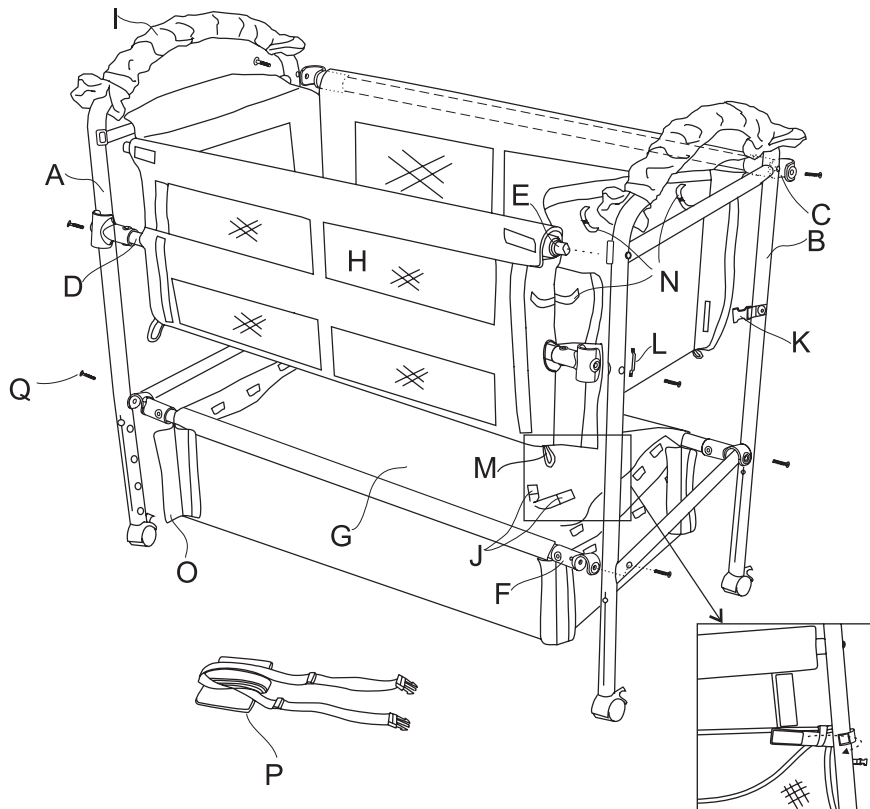
Infants have suffocated

- In gaps between extra padding and side of bassinet/cradle, and
- On soft bedding
- Use only the pad provided by manufacturer. Never add a pillow, comforter or another mattress for padding.
- If a sheet is used with the pad, use only the one provided by Arm's Reach.
- To reduce the risk of SIDS, pediatricians recommend healthy infants be placed on their backs to sleep, unless otherwise advised by your physician.
- A bedside sleeper is designed to provide a sleeping area for an infant until he or she begins to push up on hands and knees or approximately 5 months of age. Move your child to another sleeping product when your child reaches this stage.
- **Entrapment Hazard**—To prevent death from entrapment, bedside sleeper must be properly secured to adult bed using the attachment system.
 - There must be no more than 1/2 in. (13 mm) gap between bedside sleeper and adult bed.
 - Check tightness before each use by pulling bedside sleeper in a direction away from adult bed.
 - If gap exceeds 1/2 in. (13 mm), DO NOT use product. Do not fill the gap with pillows, blankets or other items that are suffocation hazards.
- Always read and follow assembly instructions for each product use mode (bedside sleeper, bassinet, play yard).
- Always use ALL required parts for each use mode. Check instruction manual for a list of required parts. Periodically check product for loose, damaged, or missing parts.
- The anchor plate and straps assembly must always be used in bedside sleeper mode.
- Never use this product if there are any loose or missing fasteners, loose joints, broken parts, or torn mesh/fabric. Check before assembly and periodically during use. Contact Arm's Reach® Concepts, Inc. for replacement parts. Never substitute parts.
- Assemble product according to manufacturer's instructions for ANY use mode—bedside sleeper as well as the bassinet.
- To avoid death from the infant's neck being caught on the top rail on the side that is next to the adult bed, the top rail must be no higher than the adult bed mattress.
- Never permit bedding from the adult bed to extend into the Bedside Sleeper
- NEVER LEAVE your infant unattended in the Arm's Reach® Co-Sleeper® bedside bassinet.
- Strings can cause strangulation! Never place items with a string around a child's neck such as hood strings or pacifier cords. DO NOT suspend strings over the unit in any configuration or attach string to toys.
- NEVER LEAVE infant in product without the TOP HORIZONTAL RAIL installed in the upper most position, unless securely attached to the adult bed.
- Always check to be sure that the upper locking bars and the lower locking bars are in their "locked position" before placing the infant in the Arm's Reach® Co-Sleeper® bedside bassinet.
- ONLY use leg extensions on the Co-Sleeper® bedside bassinet when it is attached to the parental bed.
- NEVER use plastic shipping bags or other plastic film as mattress covers not sold and intended for that purpose. They can cause suffocation.
- Make sure all Velcro® straps are secured and tight when used in the co-sleeping position. Tighten straps periodically.
- **STRANGULATION/SUFFOCATION HAZARD:** The top edge of the lowering bar must be level with or below the top of the adult mattress when used as an Arm's Reach® Co-Sleeper®. The level of the Arm's Reach® Co-Sleeper® bedside bassinet mattress must be a minimum of 4 inches below the top edge of the lowering bar. **NEVER raise the level of the Arm's Reach® CO-SLEEPER® brand bedside bassinet mattress.**
- NEVER USE the Arm's Reach® Co-Sleeper® bedside bassinet in Co-Sleeper position without the anchor plate attached and locked as shown. Failure to use this anchoring system could result in serious injury or death to the infant. Make sure all straps are secured and tight. Check straps before each use.
- Failure to use this securing system will allow the Arm's Reach® Co-Sleeper® bedside bassinet to move away from the adult bed and could result in the infant falling out of the Co-Sleeper® bedside bassinet.
- **STRANGULATION HAZARD:** When anchor plate and strap assembly are not in use, store in a safe place not accessible to children.
- DO NOT place product near a window where cords from blinds or drapes may strangle a child.
- Keep the bassinet away from stoves, heaters, campfires and other hazards.

- DO NOT allow children to climb or play on or under unit in any configuration.
- FALL HAZARD: Remove infant from the Arm's Reach® Co-Sleeper® bedside bassinet before starting any conversions.

- Always make sure all top and bottom rails are securely locked, in all configurations, before putting an infant /child into the unit.
- Do Not remove warning labels.

Parts List



Attachment of storage basket and nest to tube-see page 6

A. Side Rail Left	1 pc.
B. Side Rail Right	1 pc.
C. Back Rail	1 pc.
D. Stationary Rail	1pc.
E. Removable Rail	1 pc.
F. Storage Basket Rail	2 pcs.
G. Storage Basket	1 pc.
H. Sleeping Nest	1 pc.
I. Handle Cover	2 pcs.
J. Velcro® straps for securing storage basket to sleeping nest	4 pcs.
K. Female straps connector for anchor plate	2 pcs.
L. Loop for anchor plate	2 pcs.
M. Loop for Velcro® straps of storage basket	4 pcs.
N. Velcro® straps for securing flaps	8 pcs.
O. Leg cover	4 pcs.
P. Anchor plate	1 pc.
Q. Screw (M6*44mm)	8 pcs.

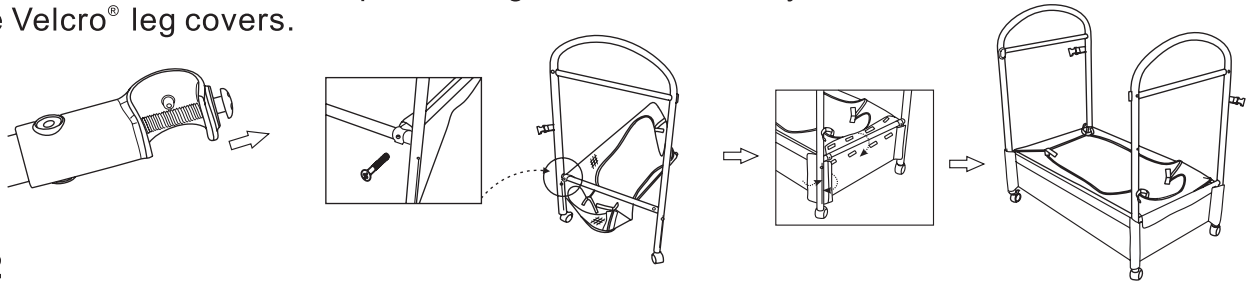
How to set up the Clear-View™ Co-Sleeper® bedside bassinet

⚠ WARNING: Failure to follow these warnings and instructions could result in serious injury or death.

NOTE: When assembling we recommend you leave screws slightly loosened it will then be easier to assemble. After bassinet is assembled, tighten all screws.

Step 1

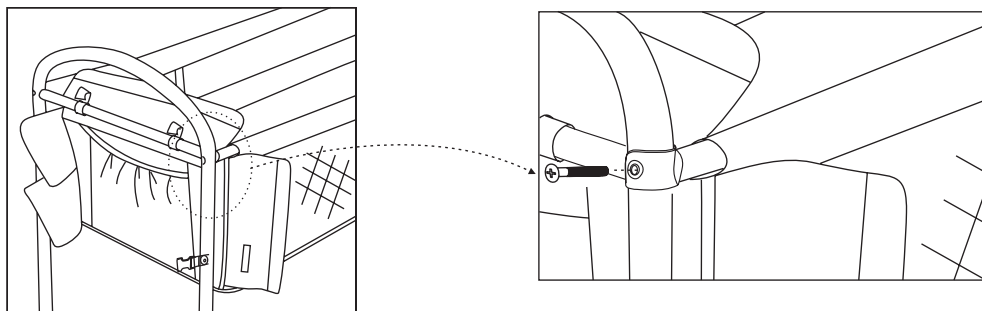
Attach the storage basket to the side rail with 4 provided screws found in end of rails. Cover short rail with Velcro® flap attaching Velcro® all the way. Secure Velcro® leg covers.



Step 2

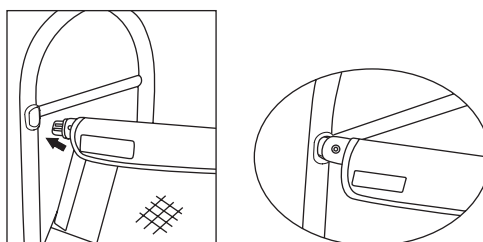
Drop sleeping nest between curved side rails.

Attach back rail to left and right curved rail using the screws found in ends of rail.

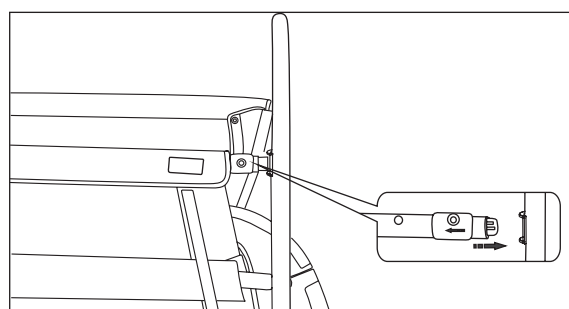


Step 3

Insert left side of front (side that connects to the adult bed) removable rail into female receiver located on side rail.



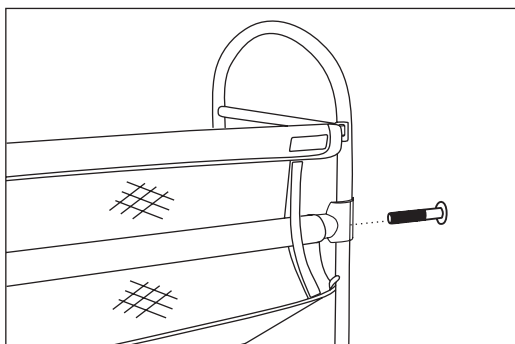
To insert right side of front removable rail, slide spring lock back towards left and insert it into right receiver.



How to set up the Clear-Vue™ Co-Sleeper® bedside bassinet

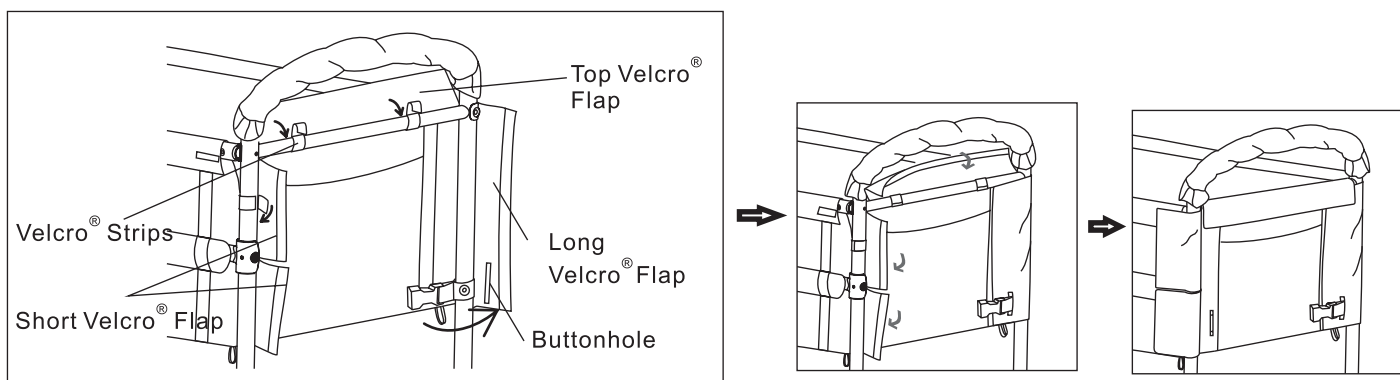
Step 4

Attach front stationary rail to left and right curved rail as done in step 2.

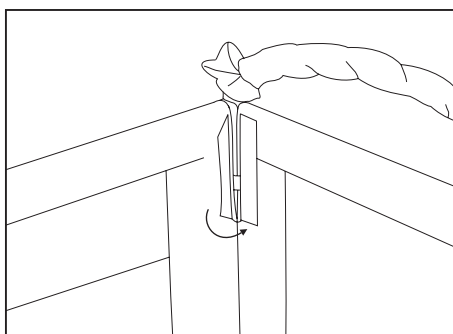


Step 5

Attach all Velcro® strips below the Velcro® flaps around the short rail and side rails. Get the male buckle on the side rail through the button hole on the long Velcro® flap. Cover the side rail with the male buckle with the long Velcro® flap as pictured first, then cover the short rail with the top Velcro® flap. Finally secure the short Velcro® flaps by attaching the Velcro® to the side panel. Repeat the same process for the opposite short side.



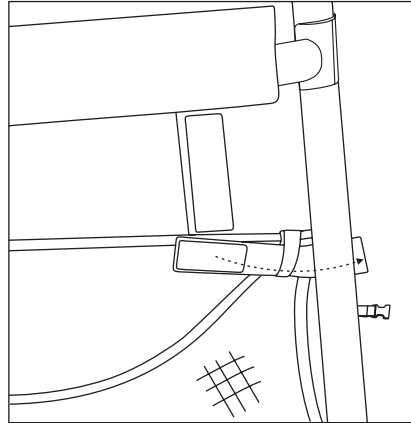
Attach the Velcro® on the inside of the removable rail.



How to set up the Clear-View™ Co-Sleeper® bedside bassinet

Step 6

Feed Velcro® from storage basket through loop on the bottom of sleeping nest and secure to each leg.



(A)

Put the handle covers on the rail handles.
The unit is now in a free standing bassinet position.



(B)

⚠️ WARNING: Make sure all Velcro® straps are secured and tight. Periodically check your product to make certain all Velcro® and screws are tightened securely.

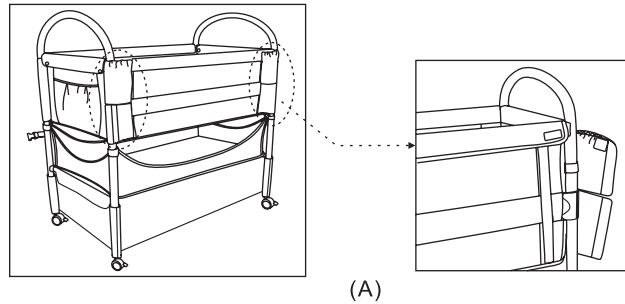
To convert to Co-Sleeping position

⚠️ FALLING HAZARD: Remove infant from the Arm's Reach® Clear-Vue™ Co-Sleeper® bedside bassinet before starting any conversions.

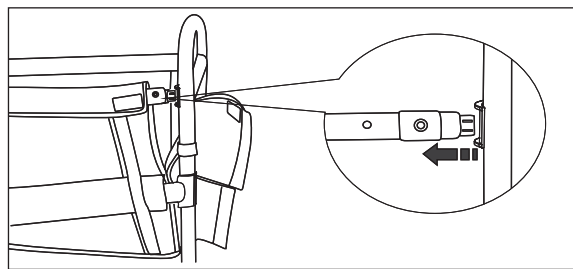
Step 1

Open Velcro® on two short flaps.

Repeat above on other side.

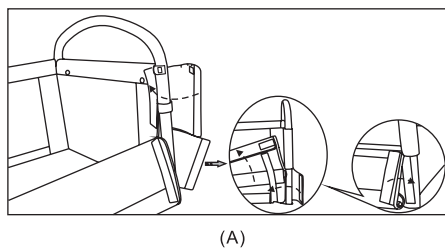


Pull fabric to expose spring lock on the right side.
Slide spring lock towards left, and drop removable rail down.

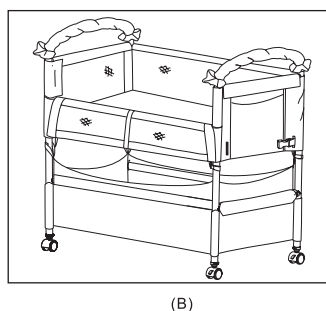


Step 2

Pull two short flaps and attach the Velcro® on both sides. Attach the upper short flap to cover plastic female receiver on both side rails.



Put the handle covers on the rail handles.
The unit is now in a co-sleeping bassinet position.



To convert to Co-Sleeping position

Step 3

Slide the anchor plate and straps under the mattress, placing the anchor plate flush against the mattress on the opposite side from Co-Sleeper® bassinet.

Connect both straps to each short side of the bassinet by passing the male buckle through the “belt loop” at the front leg of the product and then connect the buckle to rear leg.

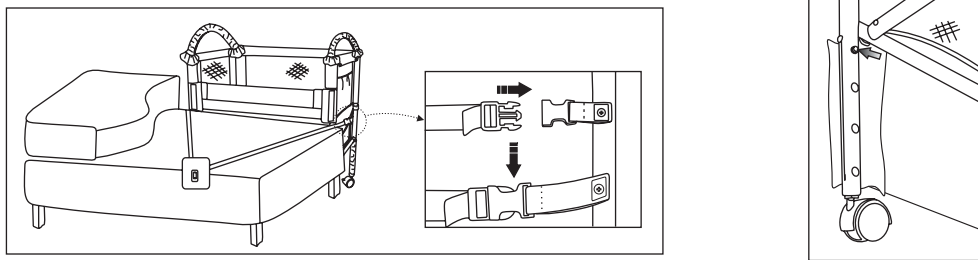
Make both straps as tight as possible against the parental bed, so tight it creates a slight indentation in mattress. To test if the Co-Sleeper® bassinet is tightly secured to adult bed, push product with hands to make sure the gap is no more than ½”(13mm). If more than ½”(13mm), readjust strap to pull tighter.

When bassinet is tight and ready to use, roll the excess strap up and secure it with elastic loop. Always tighten straps before each use.

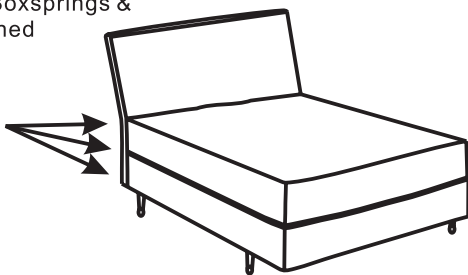
To make the Arm's Reach® Clear-Vue™ bedside bassinet panels higher, first measure adult bed from floor to top of mattress. If adult bed is higher than 24", you will need to raise the Clear-Vue™. Lay the bassinet on its side. On the bottom of the legs, find the leg adjuster mechanism.

Slide fabric sleeve towards wheel exposing push button. Push button and pull leg to required bed height (26", 28", or 30"). Do this for all four legs.

It is recommended to make the strap shorter than the width of the mattress to ensure the Co-Sleeper® is pressed securely against the parental bed, without any gaps.

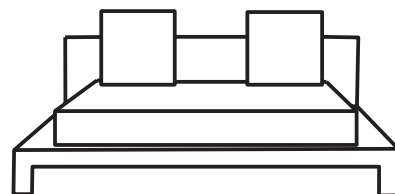


Mattress, Boxsprings & Frame aligned



ACCEPTABLE BED FRAME IN-LINE

Frame Extended



UNACCEPTABLE BED, MATTRESS, BOXSPRING & FRAME NOT IN-LINE

⚠️ WARNING: STRANGULATION/SUFFOCATION HAZARD: The top edge of the bumper bar/shelf must be level with or below the top of the adult mattress when used as a Co-Sleeper® bedside bassinet. The level of the Clear-Vue™ Co-Sleeper® bedside bassinet mattress must be a minimum of 4 inches below the top edge of the bumper bar/shelf. NEVER raise the level of the Clear-Vue™ Co-Sleeper® bedside bassinet mattress.

⚠️ WARNING: NEVER USE as a Clear-Vue™ Co-Sleeper® bedside bassinet in Co-sleeping position without the anchor plate attached and locked as shown. Failure to use this anchoring system could result in serious injury or death to the infant. Make sure all straps are secured and tight. Check straps before each use.

⚠️ WARNING: Failure to use this securing system will allow the Co-Sleeper® to move away from the adult bed and could result in infant falling out of the Clear-Vue™ bedside bassinet. NEVER leave infant unattended in the Clear-Vue™ Co-Sleeper® bedside bassinet.

⚠️ WARNING: STRANGULATION/CHOKING HAZARD Do not allow excess strap (or any other loose object) to find it's way into the Clear-Vue™ Co-Sleeper® bedside bassinet. Do Not allow excess strap to lay loose on floor because someone may trip over it.

⚠️ WARNING: Make sure all Velcro® straps are secured and tight. Periodically check your product to make certain all Velcro® and screws are tightened securely.

⚠️ WARNING: Make Sure Push Button on leg extension mechanism is secured for proper bed height.

Cleaning:

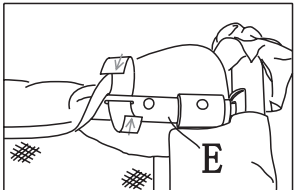
Mattress: Wipe clean with a damp cloth. Air dry. Do not machine wash or use hot iron.

Mattress sheet: Machine wash, lukewarm water. Do not bleach. Air fluff dry. No heat.

Metal Frame: Wipe With soft damped cloth. Air dry.

Lining: Machine washable on lukewarm setting use delicate cycle. No chlorine bleach. Drip dry.

When reattaching lining, secure the Velcro® tabs to the removable rail.



Maintenance:

Regularly check screws and springlock to make sure they are securely in place.

Wipe surface with a damp cloth or sponge using mild detergent water.

Lisez toutes les instructions AVANT d'assembler et d'UTILISER ce produit.

⚠️ AVERTISSEMENT : Le non-respect de ces instructions et de ces avertissements peut causer des blessures graves, voire mortelles.

RISQUE DE SUFFOCATION : Jetez tous les matériaux d'emballage immédiatement après l'ouverture de la boîte. Les attaches et les sacs en plastique peuvent causer une suffocation ou un étouffement.

• RISQUES DE CHUTE – Pour aider à prévenir les chutes, ne pas utiliser ce produit si l'enfant commence à se mettre sur les mains et les genoux ou a atteint le poids maximal recommandé par le fabricant de £ 18, selon la première éventualité.

• RISQUE DE SUFFOCATION
-Les nourrissons ont étouffé

• Dans les espaces entre un rembourrage supplémentaire et le côté de la couchette / berceau et
• On literie molle
• Utiliser uniquement la housse fournie par le fabricant. Ne jamais ajouter un oreiller, couette ou un autre matelas pour le rembourrage.



If you have any questions - call or write Arm's Reach Concepts, Inc.
2081 N Oxnard Blvd., PMB#187, Oxnard, CA 93036-2964
(800) 954-9353 (US Only) or (805)278-2559 fax: 805-604-7982
www.armsreach.com
Hours: 9:00 A.M. - 4:00 P.M. Pacific Time