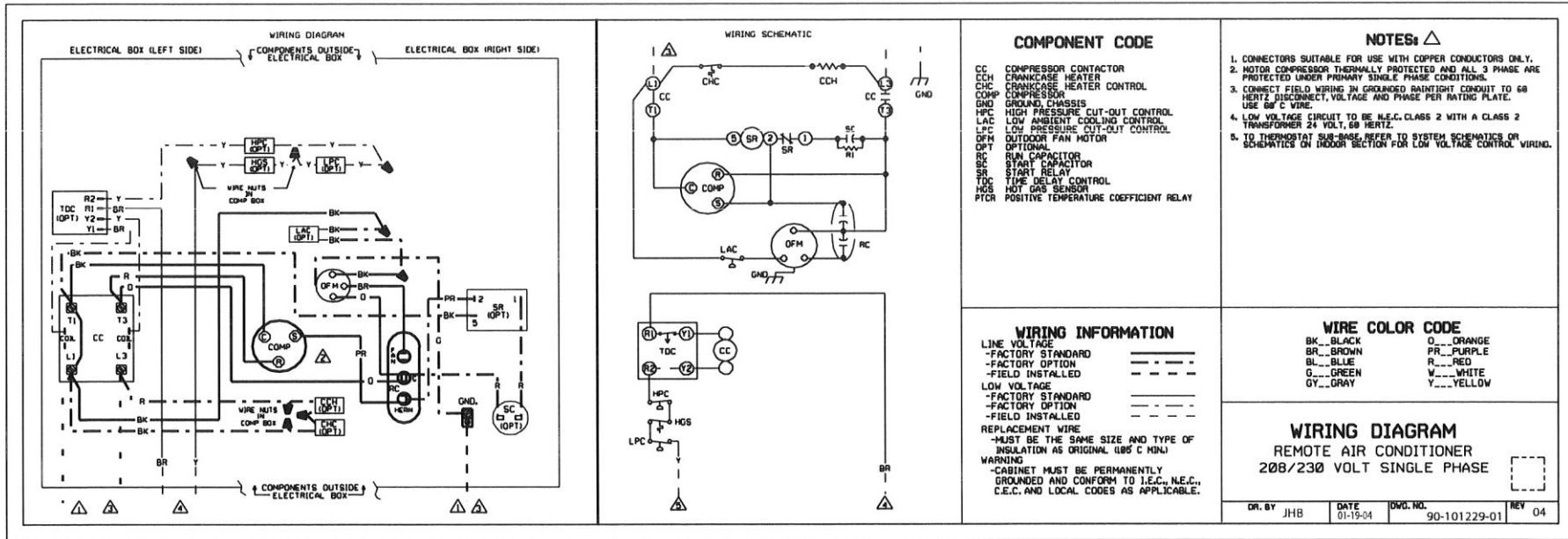


PRINTING INSTRUCTIONS: MAKE EXACTLY 12.0 IN X 4.125 IN. WHITE BACKGROUND WITH BLACK PRINTING MATERIAL: ADS-4574-10, PRESSURE SENSITIVE, ADHESIVE BACKED MATERIAL	REVISIONS	02	REVISED LPC WIRE COLOR TO BROWN WAS YELLOW	JHB	A-1041S006 5-19-05	NO REVISION TO DESIGN, MATERIAL, TOOLING, OR PROCESS IS ACCEPTABLE WITHOUT PRIOR APPROVAL FROM RHEEM THROUGH AN AUTHORIZED CHANGE NOTICE. A REVISED ENGINEERING SPECIFICATION AND A RESAMPLING OF PARTS. THE SUPPLIER IS RESPONSIBLE FOR NOTIFYING RHEEM R & D AND PURCHASING DEPARTMENTS IN WRITING OF ANY CHANGES AFFECTING PRODUCT QUALITY, PERFORMANCE, RELIABILITY, PACKAGING, DELIVERY OR WORKMANSHIP. ANY DOCUMENTS REFERRED TO ON THIS DRAWING ARE INCLUDED IN THE SPECIFICATIONS FOR THIS COMPONENT.
		03	REVISED LPC WIRE COLOR TO YELLOW WAS BROWN.	JHB	Y-0598S0644 03-02-11	
		04	ADDED DOTTED BOX TO REPRESENT 2D DATAMATRIX AND NOTE	JHB	Y-0546S075 9-16-15	



NOTE:
 THE DOTTED BOX NEAR THE DRAWING NUMBER REPRESENTS A .25 X.25 2D DATA MATRIX. SEE ADS-104669-01 FOR DATA MATRIX SPECS.

APPROVED BY: <i>JHB</i>	CHECKED:	ORIGINAL RELEASE NO.:
MODELED BY: JHB	DATE: 01-19-04	A-1005S006
PART NO.: 90-101229-01	REV: 04	