



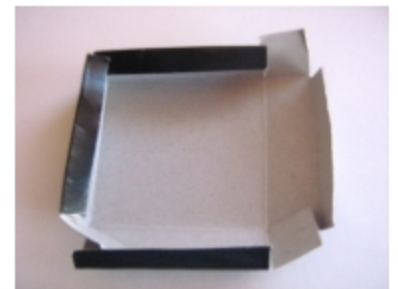
Instructions to assembling our reed packaging



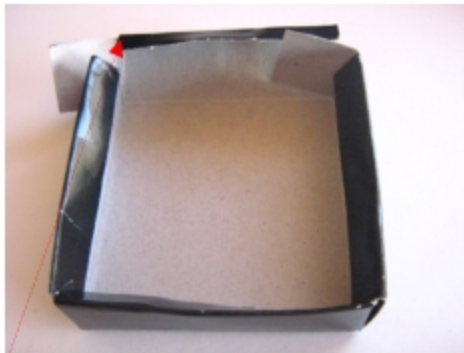
1. There are 5 pieces to your reed box



2. Take the 2 black cardboard pieces



and begin to fold along the creases.



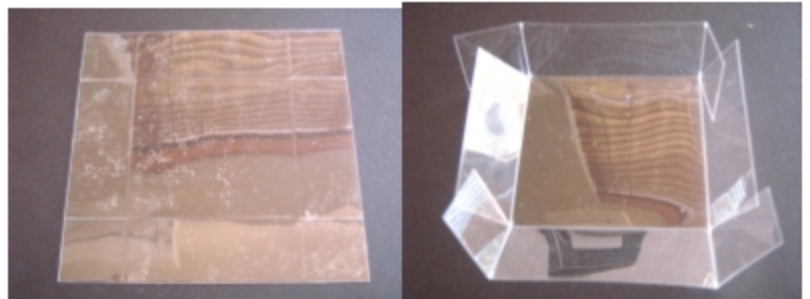
3. The top flap folds down over the corners. Do this to both pieces of card. It will take a bit of practice to get it smooth.



4. This forms the top and bottom of the box



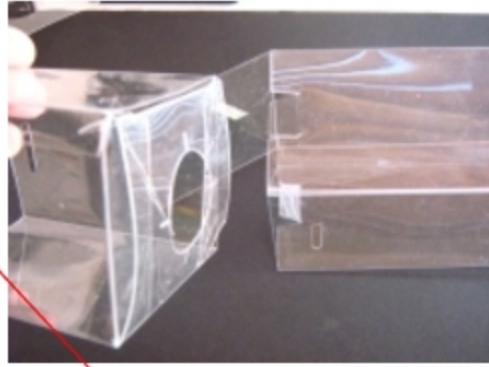
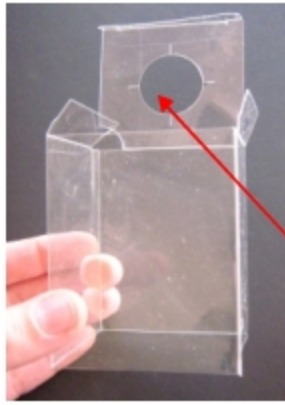
5. Take the long flat plastic piece and begin folding along the creases folding and bending the plastic backwards and forwards. It will form a tube.



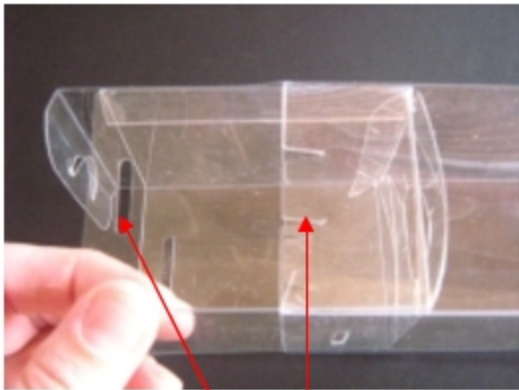
6. Take the flat square piece of plastic and begin folding along the creases. It will form a very loose box



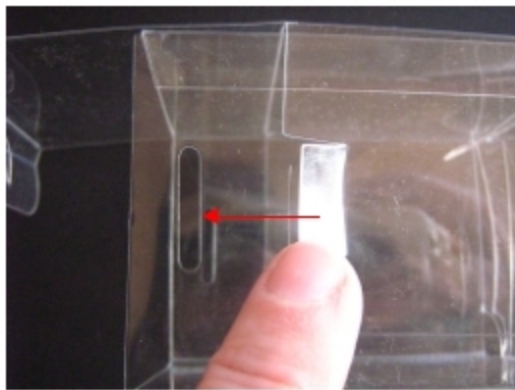
7. Take the flat piece of plastic with the hole and begin folding along the creases. It will form a small tube.



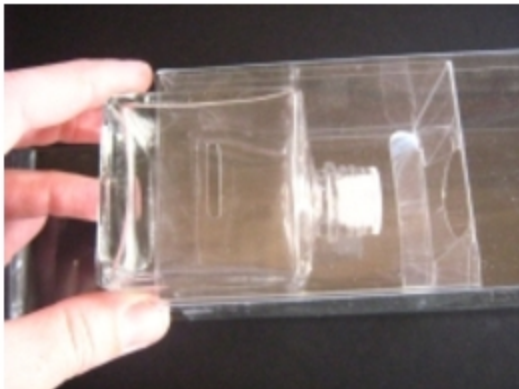
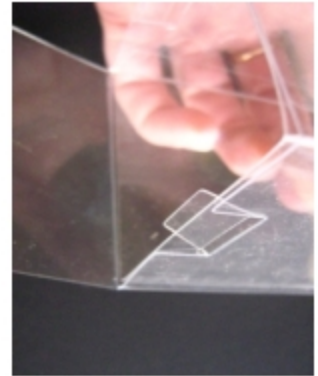
8. Fold down the top piece with the hole and you are ready to insert this piece into the long plastic tube.



9. Note: There are two cutouts on the long plastic tube and two slits or holes in the small plastic tube. These need to line up as they fit into one another



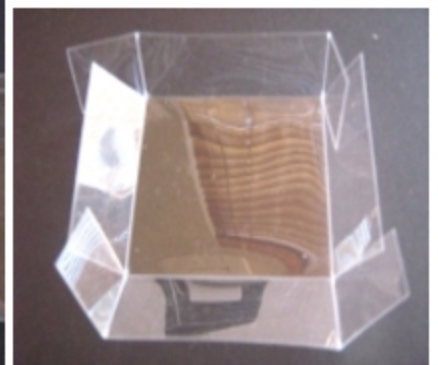
10. Push the smaller tube inside the longer tube until you reach the cutout in the longer tube. Feed this cutout into the hole in the smaller tube. It locks your smaller tube into place.



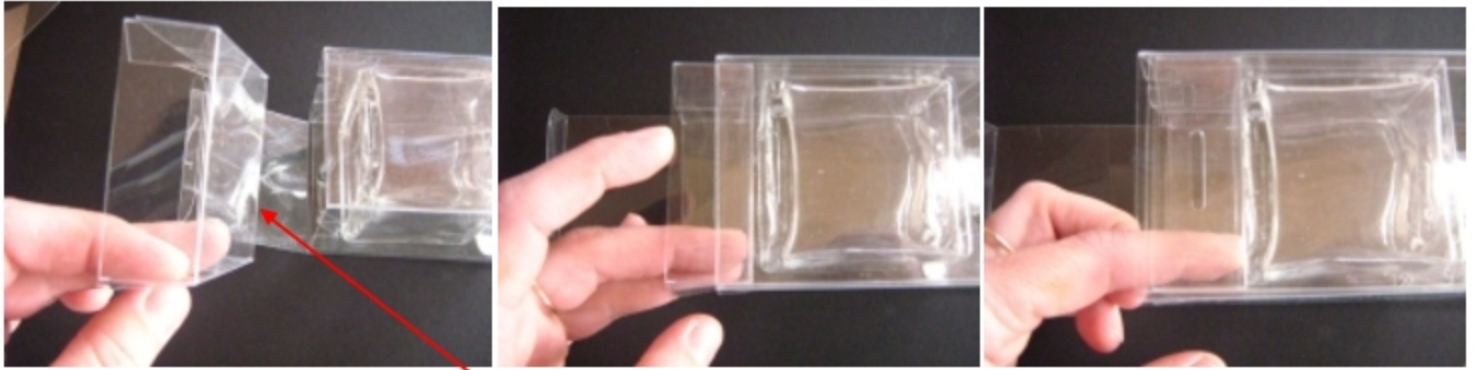
11. When your bottle is full of fragrance put the bung in and screw the lid down then insert the bottle into the small tube



12. Push the bottle all the way up until the neck of the bottle pokes through the hole in the tube



13. Take your loose square box and hold it in its square shape with your fingers.



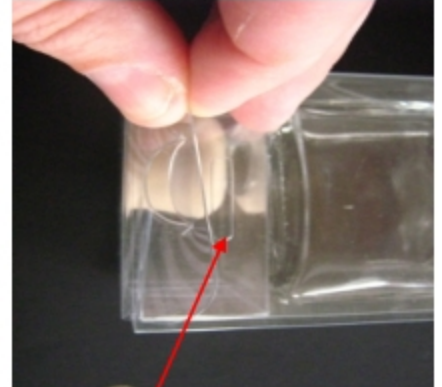
14. Insert this square of plastic so the flat base pushes up against the bottom of the bottle



15. When sending your reed diffuser to customers you can store the decorative lid in this cavity



16. Close the base of the box first popping out the semi circle of plastic. This will fit into another slit in the long tube to securely close the lid

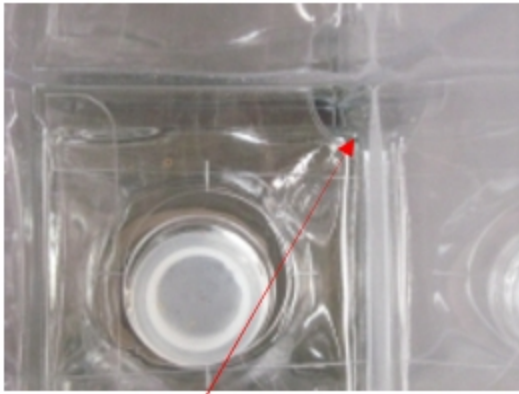


17. If you have secured all parts correctly you can turn the box up and down and the glass bottle will not move

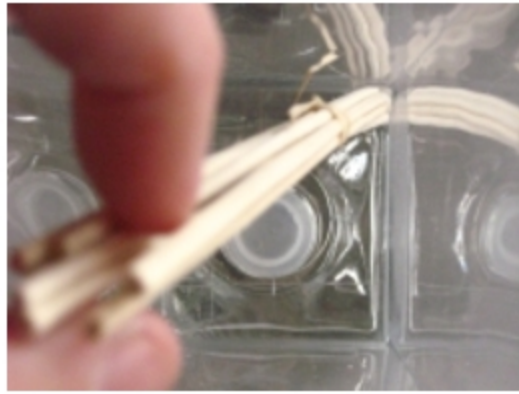


18. Take the black base with the warning label you folded earlier and place over the bottom of the reed box.

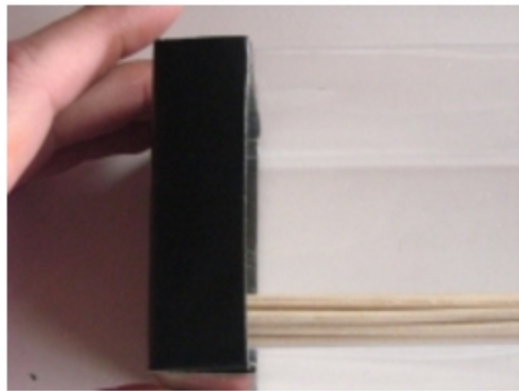
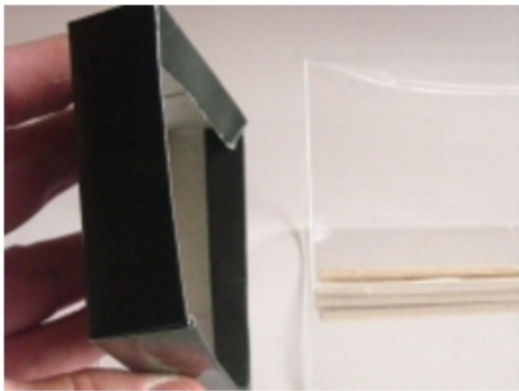




18. Stand the box up and look down inside. You will see a semi circular hole cut out in the corner.



19. Insert your bundle of reeds down into this hole. You may have to push past the bottle a bit and twist the reeds to slide them all the way down



20. Take the plain black card you formed into a square earlier and place on the top of your reed box as the lid.



Your packaging is now complete