

Rodger BAS 0101-3 Bedwetting Alarm System






-  Scan the Qr-code for a detailed manual or visit www.rodger.nl/BAS
-  Scan de Qr-code voor een gedetailleerde handleiding of bezoek www.rodger.nl/BAS
-  Scannen Sie den Qr-Code für ein detailliertes Handbuch oder besuchen Sie www.rodger.nl/BAS
-  Scannez le Qr-code pour un manuel détaillé ou visitez www.rodger.nl/BAS
-  Escanee el código Qr para obtener un manual detallado o visite www.rodger.nl/BAS

-  Отсканируйте Qr-код для подробного руководства или посетите www.rodger.nl/BAS
-  Zeskanuj kod QR w celu uzyskania szczegółowej instrukcji lub wizyty www.rodger.nl/BAS
-  Skanna Qr-koden för en detaljerad manual eller besök www.rodger.nl/BAS
-  Skann Qr-koden for en detaljert manual eller besøk www.rodger.nl/BAS
-  Scan Qr-koden for en detaljeret manual eller besøg www.rodger.nl/BAS
-  Scansiona il codice QR per un manuale dettagliato o visita www.rodger.nl/BAS
-  Digitalize o código QR para manual detalhado ou visita www.rodger.nl/BAS

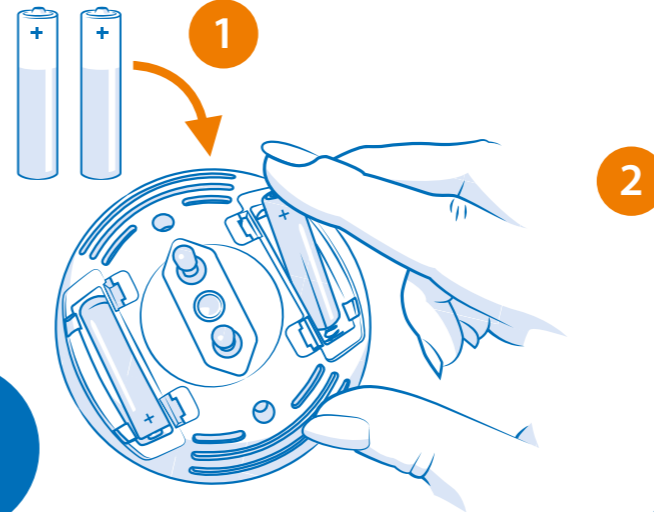







www.rodger.nl/BAS



-  Installation Connector
-  Installatie stekker
-  Installation Stecker
-  l'installation Connectique
-  Instalación Conector

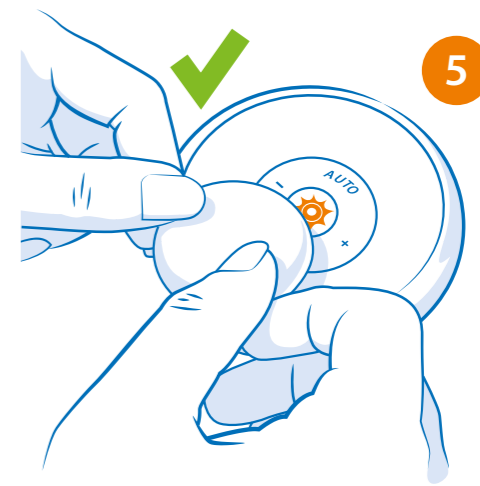
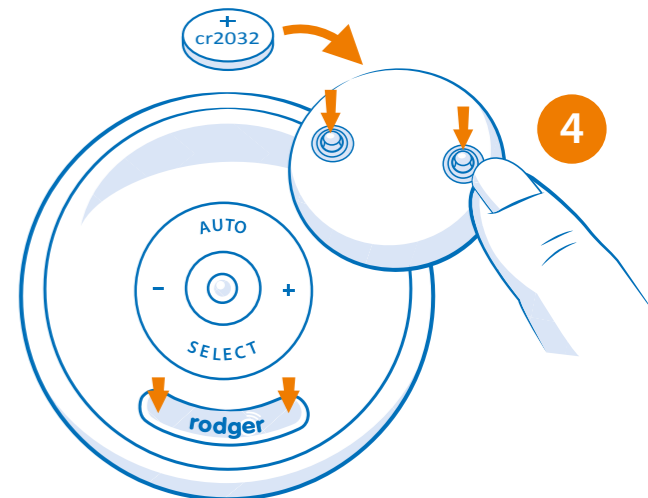
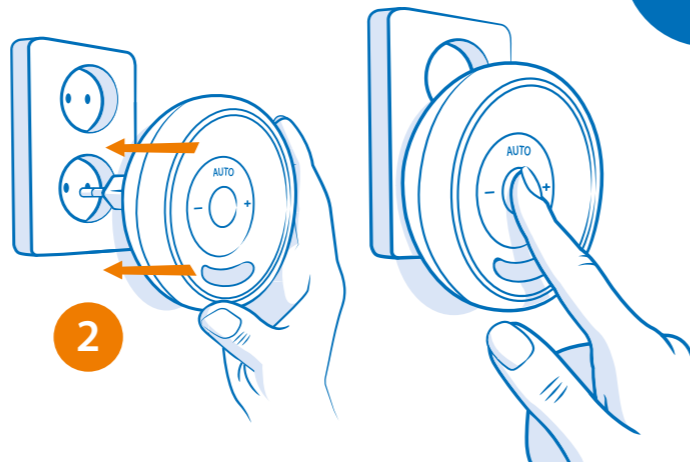
2 x AAA








-  Battery use
-  Gebruik batterijen
-  Batterie in Verwendung
-  Utilisation de la batterie
-  Uso de la batería

3

Or



-  Alarm check
-  Alarm controle
-  Alarmprüfung
-  Vérification des alarmes
-  Control de alarma