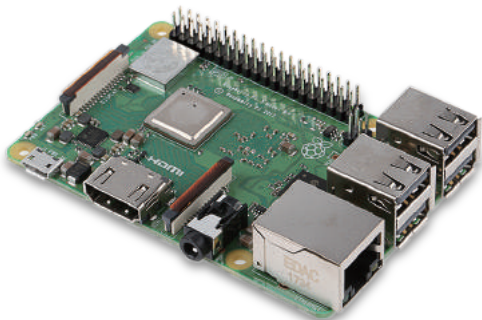




ABOX

ABOX RASPBERRY PI
QUICK START GUIDE





TYPICAL HARDWARE YOU WILL NEED

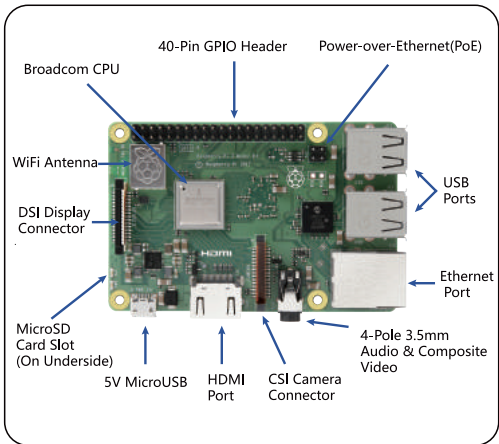
The RPi can be used without any additional hardware (except for power supply or something like that). Like any ordinary PC, generally you will need additional hardware as below:

No.	Item	Minimum Recommended Specification¬es
1	Micro SD Card	<ul style="list-style-type: none">• Minimum size 4GB; Class 4(the class indicates how fast the card is)• We recommend you to use branded Micro SD cards as they are more reliable.
2	Power Adaptor	<ul style="list-style-type: none">• A good quality micro USB power supply can provide at least 700mA at 5V which is essential especially raspberry pi 3 that needs 2500mA at 5V.• Many mobile phone charger are compatible. Please check the label on the plug. It would be better if there is a switch.• If your supply provides less than 5V, your Raspberry Pi may not work at all, or it may behave strangely since some are not what they claim to be.
3	Keyboard& Mouse(Not included)	<ul style="list-style-type: none">• Any standard USB keyboard and mouse should work.• Keyboards or mice that take a lot of power from the USB ports so that you may need a powered USB hub.This may include some wireless devices.
4	HDMI Cable	<ul style="list-style-type: none">• Connect to HDMI screen or TV.
5	Case	<ul style="list-style-type: none">• To protect your Raspberry pi.
6	Card Reader	<ul style="list-style-type: none">• Install system files to your Micro SD card.

If you purchased one of ABOX' s Raspberry Pi Starter Kits, many of the above items are included. What you will get depends on the specific kit you purchase.



GETTING STARTED



You can use the diagram to connect everything together, or connecting as follow:

- 1.Plug the Pre-loaded Micro SD card into the Pi.
- 2.Plug the USB keyboard and mouse into the Pi.
- 3.Plug the video cable both into the screen(TV) and the Pi.
- 4.Plug your extras into the Pi(USB Wi-Fi, Ethernet cable,hard drive etc.)
- 5.Ensure that your USB Hub(if any) and screen are working.

- 6.Plug the power source into the main socket.
- 7.With your screen on, plug the other end of the power source into the pi.
- 8.The Pi should boot up and display messages on the screen.



CONNECTING TO WIRELESS LAN

Note: Before installing the system, please connect your Raspberry Pi to wireless network and select the "Language" and "Keyboard" ! Then you will need to follow these steps:

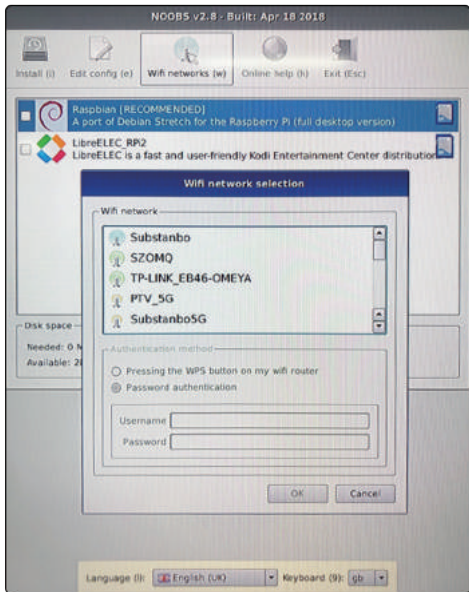
1. Wireless LAN connections can be made via the network icon in the middle of the menu bar. If you are using a Raspberry Pi, or an earlier model with a WiFi dongle plugged in, left-clicking this icon will bring up a list of available WiFi networks.
2. If no networks are found, it will show the message "No APs found - scanning...": just wait a few seconds without closing the menu, and it should find your network.
3. Click the network that you want to connect to. A dialogue box will appear prompting you to enter the network key.
4. Enter the key and press OK, then wait a couple of seconds. The network icon will flash briefly to show that a connection is being made. Once it's ready, the icon stops flashing and shows the signal strength.



SELECT THE "LANGUAGE" AND "KEYBOARD"

You can choose the language and keyboard type to use at the bottom of the menu bar.

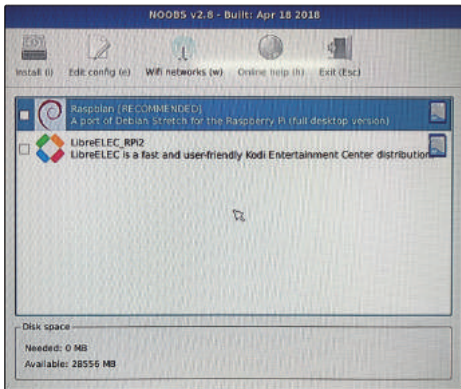
Note: Please select the "Language" and "Keyboard" before installing the system.





SYSTEM INSTALL (RASPBIAN)

1. Insert a Pre-loaded NOOBS Micro SD card into the Micro SD card slot on the bottom side of the Raspberry pi.
2. Connect a USB keyboard and mouse to the USB ports.
3. Connect a HDMI monitor or TV to the Raspberry Pi using a HDMI cable.
4. If you intend to use an operating system other than Raspbian, connect the raspberry pi to your network using an Ethernet cable. If a wired internet connection is detected during the first boot, you will be presented with additional choices of operating systems to install.
5. The installation interface is as follow:



6. When the installation is complete, the raspberry pi will reboot.

Also, if you are finding other way to install the system, please go to the [https:// www.Raspberrypi.org](https://www.Raspberrypi.org) to download the system you want.



The screenshot shows the 'Downloads' section of the Raspberry Pi website. At the top, there is a navigation bar with links for 'HOME', 'DOWNLOADS', 'COMMUNITY', 'HELP', 'FORUMS', and 'EDUCATION'. Below the navigation bar, a red banner reads 'DOWNLOADS'. The main content area features a heading 'Downloads' and a paragraph stating: 'Raspbian is our official operating system for all models of the Raspberry Pi. Download it here, or use NOOBS, our easy installer for Raspbian and more.' Below this text are two large icons: 'NOOBS' (a black square with a white Raspberry Pi logo) and 'RASPBIAN' (a white square with a red swirl logo). Further down, there is a section for 'Raspberry Pi Desktop (for PC and Mac)' with a descriptive paragraph. At the bottom, there are two download cards for 'NOOBS' and 'NOOBS LITE'. Each card includes a Raspberry Pi logo, the product name, version information, release date, and two buttons: 'Download Torrent' and 'Download ZIP'.

Product	Version	Release Date	Download Options
NOOBS	2.8.1	2019-02-14	Download Torrent, Download ZIP
NOOBS LITE	2.8	2019-02-14	Download Torrent, Download ZIP



SHUT DOWN

Like any computers, it is very important to properly shut down Raspberry Pi to avoid any damage to the Micro SD card file system. If you are in the graphical desktop interface, you can simply click " Menu" and select "Shutdown" ; if you are in the command line interface, you can type:

```
Sudo shutdown -h now
```



SUPPORT & RESOURCES

At ABOX, we would like to ensure your complete satisfaction. If you purchased a kit from us, please inspect the contents of your kit and do not hesitate to contact us if you have any issues. To learn more about the Raspberry Pi, you can find more the Raspberry Pi Resources at:

<https://www.raspberrypi.org/resources>

If you need any technical support of Raspberry Pi, you can visit official Raspberry Pi forums at:

<https://www.raspberrypi.org/forums>

For more information please visit our website at:

<https://www.abox-teck.com>

If you have any problems or advice on the ABOX Raspberry Pi, please do not hesitate to contact us.



support@abox-tech.com



[@Abotech.official](https://www.facebook.com/Abotech.official)



[ABOX_official](https://twitter.com/ABOX_official)

This manual is copyright of abox-tech.com. No part of this guide be sold, licensed, transferred, copied or reproduced in any manner, form or media without the prior written consent of abox-tech.com.

@2018 abox-tech.com All Rights Reserved.