



Discover the Magic of K-Beauty

Step into the world of radiant, modern skincare



Discover the magic of K-beauty with LUMINOVATION's comprehensive skincare line. Luminovation combines advanced skincare technology with nature's finest ingredients to deliver stunning results. Each product in the range has been developed to give you healthier, more radiant skin. Luminovation is not just about surface-level beauty; it's about fundamentally addressing various skin issues to reveal true radiance. Our four-step daily system consists of a Purifying Deep Cleanser, First Essential Toner, Luminous Essence Lotion, and Youth Intensive Care Cream. Each step enhances the next and designed to work in harmony.

To magnify your results, elevate your skincare with the Glyco Skin Returning Care Program, a two-part system designed to work in tandem with your daily skincare regime through a Mild Peel treatment and Glyco Collagen Capsule with Glyco Biome Ampoule.

Benefits:

- Elevates your daily skincare routine into a luxurious ritual and boosts your skin's radiance.
- Each step enhances the next, culminating in radiant, healthy-looking skin.
- Infuses skin with vital nutrients, enhancing its natural luminosity.
- Delivers both immediate and long-term results, helping improve skin's texture, tone, and overall appearance.

Features:

- A complete 4-step skincare regime to Deep cleanse, tone, moisturise and repair your skin.
- Designed in Korea and infused with nutrient-rich ingredients and advanced skincare technology for maximum efficacy.
- Each product works synergistically to amplify results.
- Crafted to cater to all skin types and concerns.

KEY POINT

These products aren't meant to work alone. They're part of a carefully crafted system, designed to work in harmony. Each step enhances the next, leading you towards radiant, confident skin.

LUMINOVATION K-Beauty Skincare Line



Purifying Deep Cleanser—

A deep cleanser that smooths skin through gentle exfoliation and cleanses impurities while replenishing moisture with PhytoGlyco™ ingredients, leaving it feeling smooth and refreshed.



First Essential Toner—

Formulated to brighten skin and help improve the appearance of fine lines and wrinkles. Elevate your skincare routine with Luminovation's First Essential Toner. This K-beauty gem boosts your skin's natural glow, immersing it in a nutrient-rich experience for radiant results.



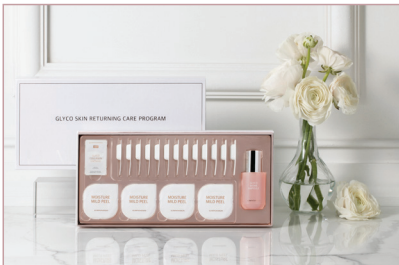
Luminous Essence Lotion—

A skincare marvel that infuses your skin with deep, lasting hydration and enriches it with nutrients that bring out an enchanting glow. An anti-wrinkle moisturising lotion for soft and radiant skin. Experience the magic of our six jewel complex ingredients that make your skin truly radiant.



Youth Intensive Care Cream—

Our high-concentration repair cream offers long-lasting moisture effects, helps to reduce the appearance of fine lines and wrinkles, and enhances skin elasticity. Anti-Wrinkle and Brightening Cream containing eight peptides for elastic and resilient skin.



Skin Returning Care Program— Discover a new level of skincare with the Glyco Skin Returning Care Program, an innovative two-part system designed to magnify your daily skincare results. Start with the Moisture Mild Peel for a weekly exfoliation, then complement your skin with a Glyco Collagen Capsule, mixed with Glyco Biome Ampoule every other night. This clinically tested, intensive care treatment rapidly enhances your skin's health and appearance.

Begin your journey with our Purifying Deep Cleanser, a gentle exfoliator that purges impurities while replenishing skin moisture. It sets the stage, preparing your skin for the revitalising experience of our First Essential Toner. This toner boosts your skin's natural luminosity, immersing it in a nutrient-rich experience that leaves it ready for the deep hydration of our Luminous Essence Lotion. This all-in-one marvel infuses your skin with hydration and enriches it with nutrients, bringing out an enchanting glow. Finally, our Youth Intensive Care Cream provides long-lasting moisture, reduces the appearance of fine lines and wrinkles, and enhances your skin's elasticity.

With regular use, you'll notice a transformation in your skin's texture, tone, and overall appearance.

Don't settle for ordinary skincare when you can elevate your routine with Luminovation. Our revolutionary essentials are powered by Mannatech's advances in skincare, like cutting-edge glycan technology and skin microbiome support. Prepare to experience the transformative effects of a comprehensive skincare system that will leave you feeling confident in your own skin. Say hello to a more radiant version of yourself with Luminovation.

IF YOU WANT TO DISCOVER THE MAGIC OF K-BEAUTY, CONTACT ME TODAY: