



Walls & Floors

THURAYA NEBULA

EXCLUSIVE WALLPAPER COLLECTION

Thuraya Nebula

An Exclusive
Wallpaper Collection



Luxurious Textures & Patterns

Handmade

Environment Friendly

Endless Design Possibilities

Custom Design & Colors

Custom Sizes

Introducing Our Exclusive Wallpaper Collection

Thuraya Nebula

Introducing our latest collection of customized wall art where each piece is designed to fit your wall perfectly, tailored to your exact dimensions for a seamless look. This carefully curated selection is more than a collection; it's an immersive experience in design, texture, and craftsmanship. Showcasing a fusion of exquisite artworks, inspiring room-shots, and high-end materials, this book is designed to ignite creativity and elevate interiors with bespoke elegance.

From intricate textures to bold statement designs, our wall art solutions are **fully customizable**, allowing you to tailor **dimensions**, **colors**, and **finishes** to suit any project's unique needs.



Discover the art of luxurious customization with endless design possibilities

405 CM



280 CM

| Panel 1 - (105 CM) | Panel 2 - (105 CM) | Panel 3 - (105 CM) | Panel 4 - (105 CM) |

SKU Code MN1725

Design Concept Nature

Material Gold Weave

Panel Width 105 CM

Size Custom

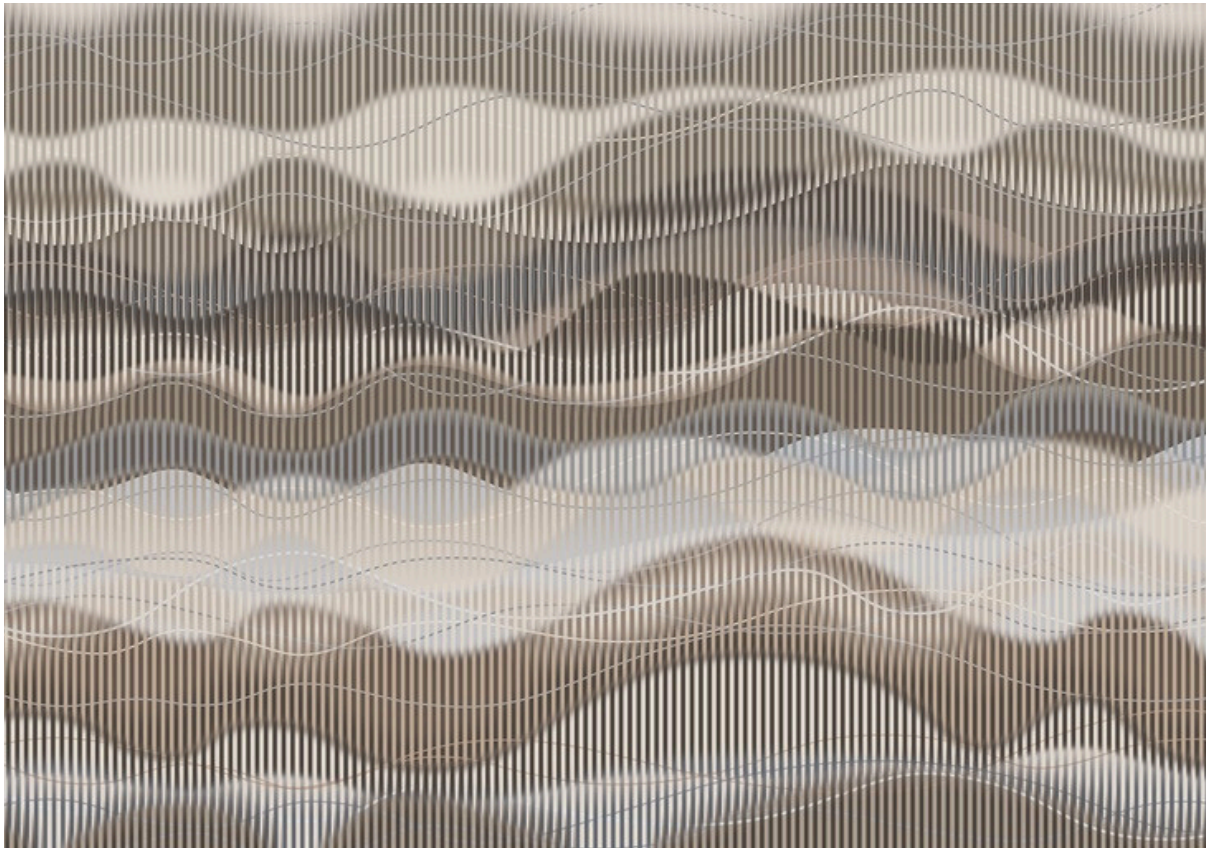
Flammability Class A (ASTM E84-19)



The panels should overlap by 5cm and trimmed during installation to ensure proper alignment with the design
The colors of the panels may vary by $\pm 5\%$ from the sample, as a result of the production process
During installation, expect a maximum deviation of $\pm 0.5\text{mm/m}$ in the length of the tiles or panels
Ensure that the sizes of the walls are verified for accuracy before production & installation



405 CM



280 CM

| Panel 1 - (105 CM) | Panel 2 - (105 CM) | Panel 3 - (105 CM) | Panel 4 - (105 CM) |

SKU Code MA1731

Design Concept Abstract

Material Gold Weave

Panel Width 105 CM

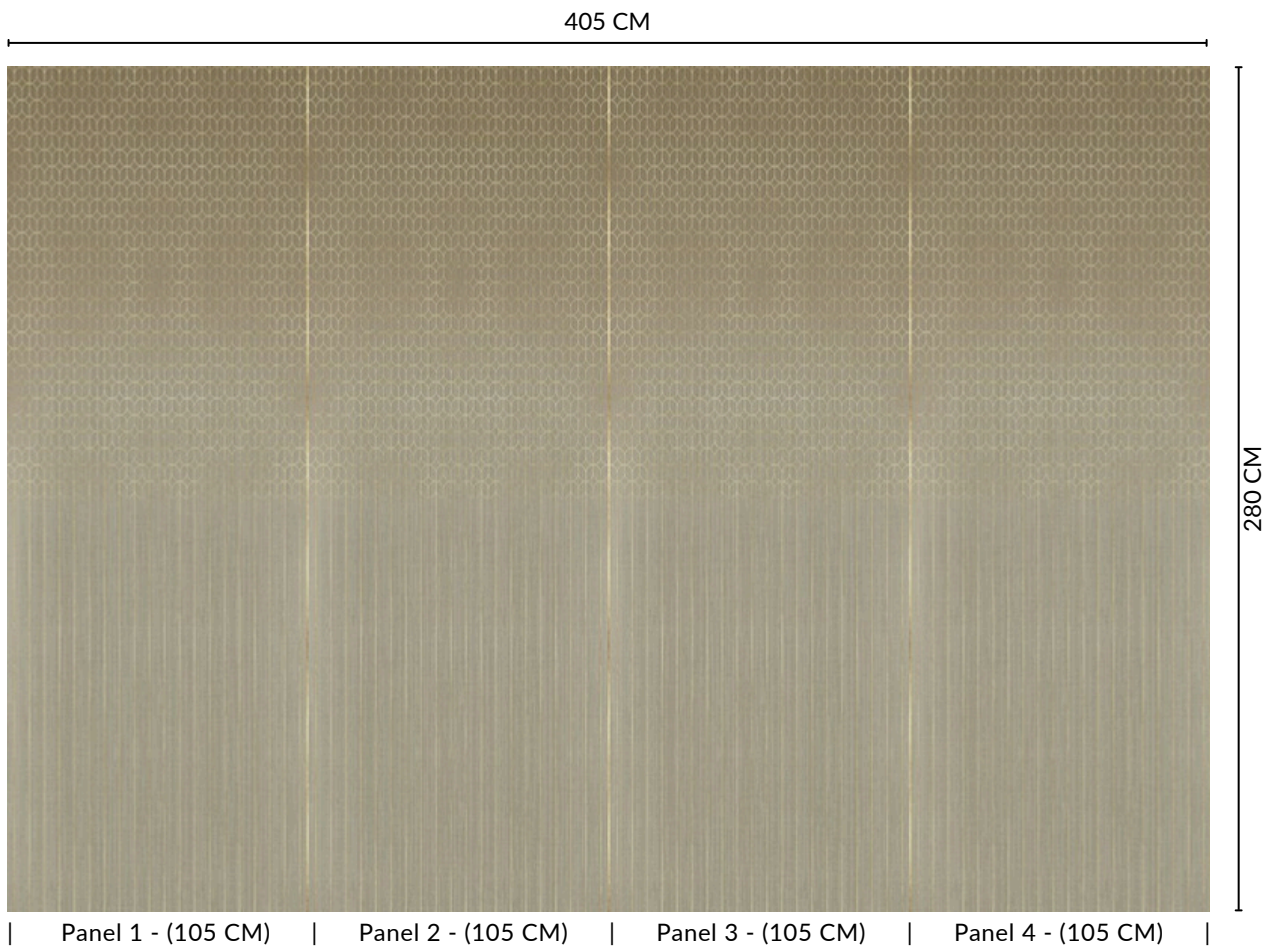
Size Custom

Flammability Class A (ASTM E84-19)



The panels should overlap by 5cm and trimmed during installation to ensure proper alignment with the design
The colors of the panels may vary by $\pm 5\%$ from the sample, as a result of the production process
During installation, expect a maximum deviation of $\pm 0.5\text{mm/m}$ in the length of the tiles or panels
Ensure that the sizes of the walls are verified for accuracy before production & installation





SKU Code	MG1724
Design Concept	Geometric
Material	Gold Weave
Panel Width	105 CM
Size	Custom
Flammability	Class A (ASTM E84-19)



The panels should overlap by 5cm and trimmed during installation to ensure proper alignment with the design

The colors of the panels may vary by $\pm 5\%$ from the sample, as a result of the production process

During installation, expect a maximum deviation of $\pm 0.5\text{mm/m}$ in the length of the tiles or panels

Ensure that the sizes of the walls are verified for accuracy before production & installation



405 CM



280 CM

| Panel 1 - (105 CM) | Panel 2 - (105 CM) | Panel 3 - (105 CM) | Panel 4 - (105 CM) |

SKU Code ML677

Design Concept Landscape

Material Gold Weave

Panel Width 105 CM

Size Custom

Flammability Class A (ASTM E84-19)



The panels should overlap by 5cm and trimmed during installation to ensure proper alignment with the design

The colors of the panels may vary by $\pm 5\%$ from the sample, as a result of the production process

During installation, expect a maximum deviation of $\pm 0.5\text{mm/m}$ in the length of the tiles or panels

Ensure that the sizes of the walls are verified for accuracy before production & installation



405 CM



280 CM

| Panel 1 - (105 CM) | Panel 2 - (105 CM) | Panel 3 - (105 CM) | Panel 4 - (105 CM) |

SKU Code MA1730

Design Concept Abstract

Material Gold Weave

Panel Width 105 CM

Size Custom

Flammability Class A (ASTM E84-19)



The panels should overlap by 5cm and trimmed during installation to ensure proper alignment with the design
The colors of the panels may vary by $\pm 5\%$ from the sample, as a result of the production process
During installation, expect a maximum deviation of $\pm 0.5\text{mm/m}$ in the length of the tiles or panels
Ensure that the sizes of the walls are verified for accuracy before production & installation



405 CM



280 CM

| Panel 1 - (105 CM) | Panel 2 - (105 CM) | Panel 3 - (105 CM) | Panel 4 - (105 CM) |

SKU Code MN1119

Design Concept Nature

Material Silver Weave

Panel Width 105 CM

Size Custom

Flammability Class A (ASTM E84-19)



The panels should overlap by 5cm and trimmed during installation to ensure proper alignment with the design
The colors of the panels may vary by $\pm 5\%$ from the sample, as a result of the production process
During installation, expect a maximum deviation of $\pm 0.5\text{mm/m}$ in the length of the tiles or panels
Ensure that the sizes of the walls are verified for accuracy before production & installation



405 CM



280 CM

| Panel 1 - (105 CM) | Panel 2 - (105 CM) | Panel 3 - (105 CM) | Panel 4 - (105 CM) |

SKU Code MN1006

Design Concept Nature

Material Silver Weave

Panel Width 105 CM

Size Custom

Flammability Class A (ASTM E84-19)



The panels should overlap by 5cm and trimmed during installation to ensure proper alignment with the design
The colors of the panels may vary by $\pm 5\%$ from the sample, as a result of the production process
During installation, expect a maximum deviation of $\pm 0.5\text{mm/m}$ in the length of the tiles or panels
Ensure that the sizes of the walls are verified for accuracy before production & installation



405 CM



280 CM

| Panel 1 - (105 CM) | Panel 2 - (105 CM) | Panel 3 - (105 CM) | Panel 4 - (105 CM) |

SKU Code MA1729

Design Concept Abstract

Material Silver Weave

Panel Width 105 CM

Size Custom

Flammability Class A (ASTM E84-19)



The panels should overlap by 5cm and trimmed during installation to ensure proper alignment with the design
The colors of the panels may vary by $\pm 5\%$ from the sample, as a result of the production process
During installation, expect a maximum deviation of $\pm 0.5\text{mm/m}$ in the length of the tiles or panels
Ensure that the sizes of the walls are verified for accuracy before production & installation



405 CM



280 CM

| Panel 1 - (105 CM) | Panel 2 - (105 CM) | Panel 3 - (105 CM) | Panel 4 - (105 CM) |

SKU Code MA1737

Design Concept Abstract

Material Silver Weave

Panel Width 105 CM

Size Custom

Flammability Class A (ASTM E84-19)



The panels should overlap by 5cm and trimmed during installation to ensure proper alignment with the design
The colors of the panels may vary by $\pm 5\%$ from the sample, as a result of the production process
During installation, expect a maximum deviation of $\pm 0.5\text{mm/m}$ in the length of the tiles or panels
Ensure that the sizes of the walls are verified for accuracy before production & installation



405 CM



280 CM

Panel 1 - (105 CM) | Panel 2 - (105 CM) | Panel 3 - (105 CM) | Panel 4 - (105 CM)

SKU Code MN668

Design Concept Nature

Material Silver Weave

Panel Width 105 CM

Size Custom

Flammability Class A (ASTM E84-19)



The panels should overlap by 5cm and trimmed during installation to ensure proper alignment with the design
The colors of the panels may vary by $\pm 5\%$ from the sample, as a result of the production process
During installation, expect a maximum deviation of $\pm 0.5\text{mm/m}$ in the length of the tiles or panels
Ensure that the sizes of the walls are verified for accuracy before production & installation



405 CM



280 CM

| Panel 1 - (105 CM) | Panel 2 - (105 CM) | Panel 3 - (105 CM) | Panel 4 - (105 CM) |

SKU Code MA1587

Design Concept Abstract

Material Silver Weave

Panel Width 105 CM

Size Custom

Flammability Class A (ASTM E84-19)



The panels should overlap by 5cm and trimmed during installation to ensure proper alignment with the design
The colors of the panels may vary by $\pm 5\%$ from the sample, as a result of the production process
During installation, expect a maximum deviation of $\pm 0.5\text{mm/m}$ in the length of the tiles or panels
Ensure that the sizes of the walls are verified for accuracy before production & installation



405 CM



280 CM

| Panel 1 - (105 CM) | Panel 2 - (105 CM) | Panel 3 - (105 CM) | Panel 4 - (105 CM) |

SKU Code MA1319

Design Concept Abstract

Material Silver Weave

Panel Width 105 CM

Size Custom

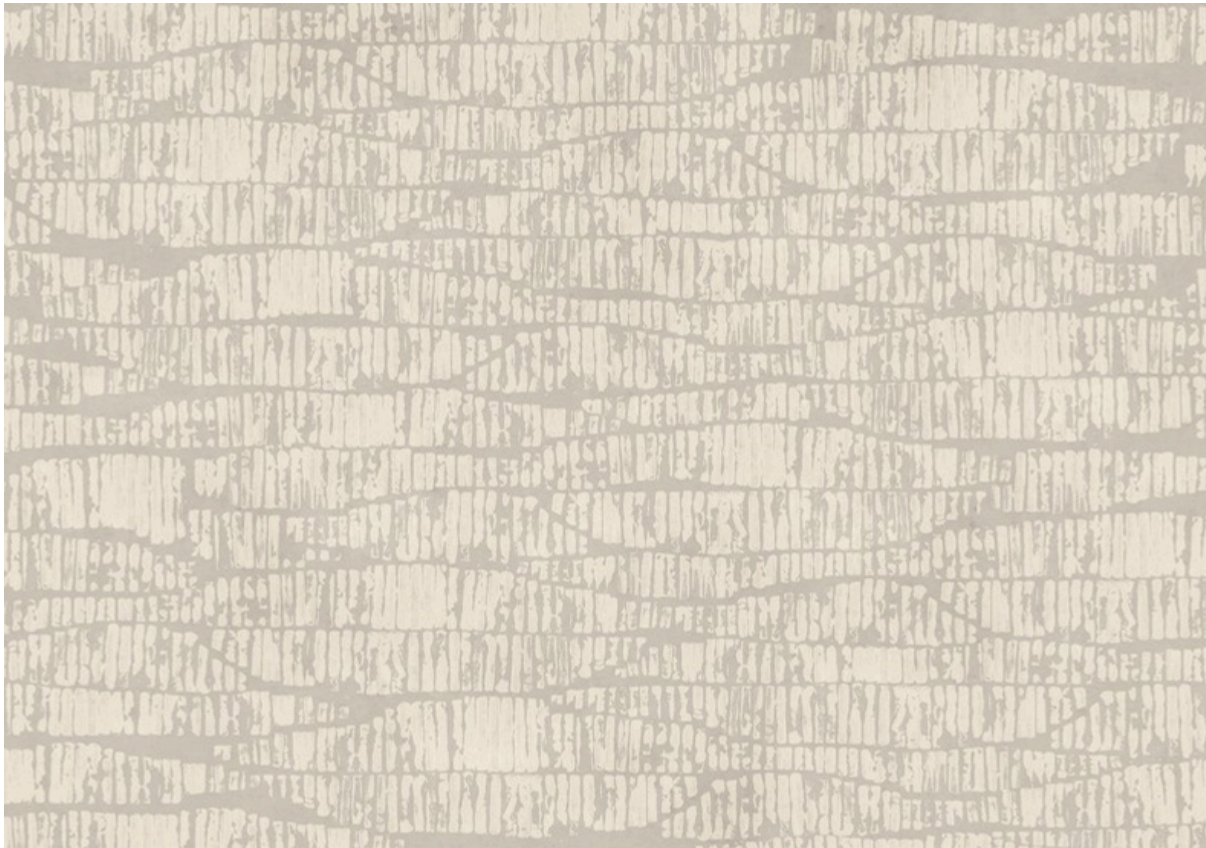
Flammability Class A (ASTM E84-19)



The panels should overlap by 5cm and trimmed during installation to ensure proper alignment with the design
The colors of the panels may vary by $\pm 5\%$ from the sample, as a result of the production process
During installation, expect a maximum deviation of $\pm 0.5\text{mm/m}$ in the length of the tiles or panels
Ensure that the sizes of the walls are verified for accuracy before production & installation



430 CM



280 CM

| Panel 1 - (90 CM) | Panel 2 - (90 CM) | Panel 3 - (90 CM) | Panel 4 - (90 CM) | Panel 5 - (90 CM) |

SKU Code MA1713

Design Concept Abstract

Material Cork Essence

Panel Width 90 CM

Size Custom

Flammability Class A (ASTM E84-19)



The panels should overlap by 5cm and trimmed during installation to ensure proper alignment with the design
The colors of the panels may vary by ±5% from the sample, as a result of the production process
During installation, expect a maximum deviation of ±0.5mm/m in the length of the tiles or panels
Ensure that the sizes of the walls are verified for accuracy before production & installation



430 CM



280 CM

| Panel 1 - (90 CM) | Panel 2 - (90 CM) | Panel 3 - (90 CM) | Panel 4 - (90 CM) | Panel 5 - (90 CM) |

SKU Code	MA1497
Design Concept	Abstract
Material	Cork Essence
Panel Width	90 CM
Size	Custom
Flammability	Class A (ASTM E84-19)



The panels should overlap by 5cm and trimmed during installation to ensure proper alignment with the design
The colors of the panels may vary by ±5% from the sample, as a result of the production process
During installation, expect a maximum deviation of ±0.5mm/m in the length of the tiles or panels
Ensure that the sizes of the walls are verified for accuracy before production & installation



430 CM



280 CM

| Panel 1 - (90 CM) | Panel 2 - (90 CM) | Panel 3 - (90 CM) | Panel 4 - (90 CM) | Panel 5 - (90 CM) |

SKU Code MS1153

Design Concept Surface

Material Cork Essence

Panel Width 90 CM

Size Custom

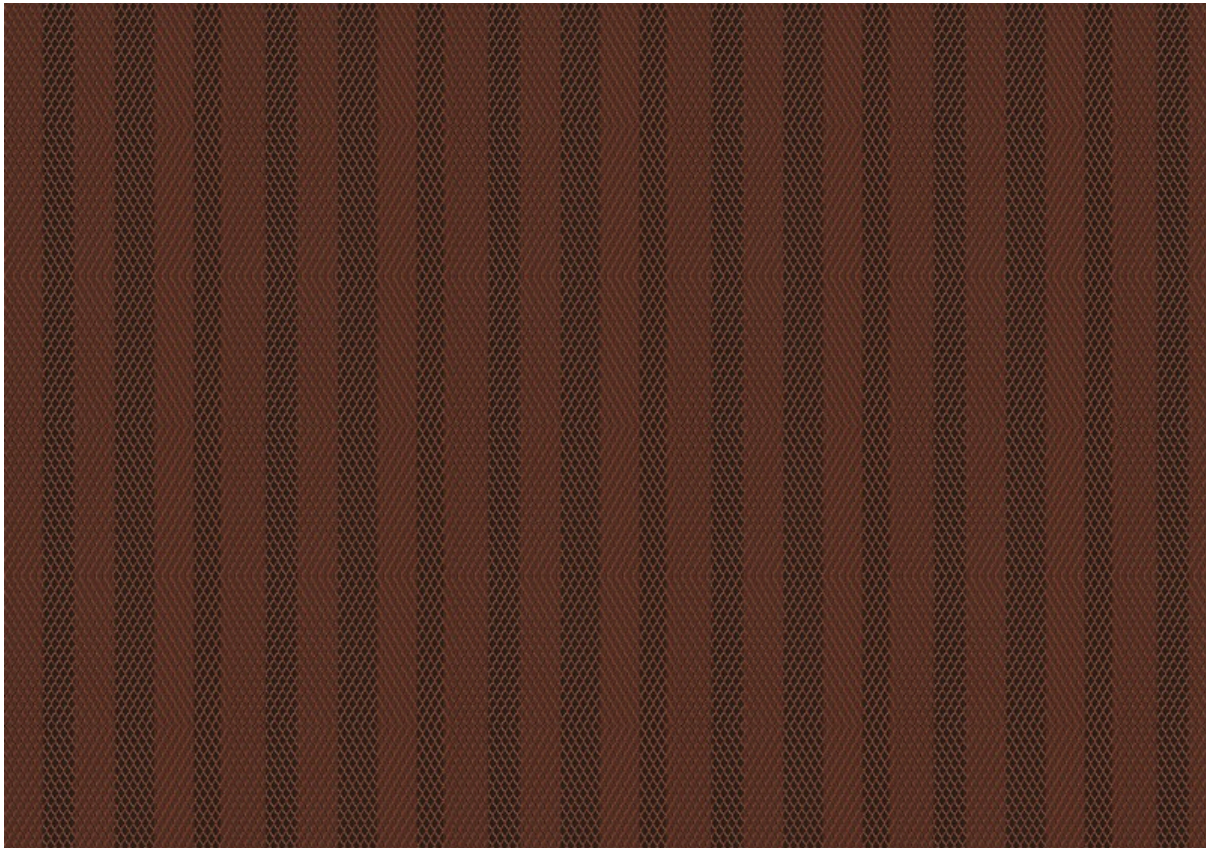
Flammability Class A (ASTM E84-19)



The panels should overlap by 5cm and trimmed during installation to ensure proper alignment with the design
The colors of the panels may vary by $\pm 5\%$ from the sample, as a result of the production process
During installation, expect a maximum deviation of $\pm 0.5\text{mm/m}$ in the length of the tiles or panels
Ensure that the sizes of the walls are verified for accuracy before production & installation



430 CM



280 CM

| Panel 1 - (90 CM) | Panel 2 - (90 CM) | Panel 3 - (90 CM) | Panel 4 - (90 CM) | Panel 5 - (90 CM) |

SKU Code MG1736

Design Concept Geometric

Material Cork Essence

Panel Width 90 CM

Size Custom

Flammability Class A (ASTM E84-19)



The panels should overlap by 5cm and trimmed during installation to ensure proper alignment with the design
The colors of the panels may vary by $\pm 5\%$ from the sample, as a result of the production process
During installation, expect a maximum deviation of $\pm 0.5\text{mm/m}$ in the length of the tiles or panels
Ensure that the sizes of the walls are verified for accuracy before production & installation



430 CM



280 CM

| Panel 1 - (90 CM) | Panel 2 - (90 CM) | Panel 3 - (90 CM) | Panel 4 - (90 CM) | Panel 5 - (90 CM) |

SKU Code MV1070

Design Concept Vintage

Material Cork Essence

Panel Width 90 CM

Size Custom

Flammability Class A (ASTM E84-19)



The panels should overlap by 5cm and trimmed during installation to ensure proper alignment with the design

The colors of the panels may vary by $\pm 5\%$ from the sample, as a result of the production process

During installation, expect a maximum deviation of $\pm 0.5\text{mm/m}$ in the length of the tiles or panels

Ensure that the sizes of the walls are verified for accuracy before production & installation



430 CM



280 CM

| Panel 1 - (90 CM) | Panel 2 - (90 CM) | Panel 3 - (90 CM) | Panel 4 - (90 CM) | Panel 5 - (90 CM) |

SKU Code MH1450

Design Concept Hobby

Material Cork Essence

Panel Width 90 CM

Size Custom

Flammability Class A (ASTM E84-19)



The panels should overlap by 5cm and trimmed during installation to ensure proper alignment with the design
The colors of the panels may vary by ±5% from the sample, as a result of the production process
During installation, expect a maximum deviation of ±0.5mm/m in the length of the tiles or panels
Ensure that the sizes of the walls are verified for accuracy before production & installation



430 CM



280 CM

| Panel 1 - (90 CM) | Panel 2 - (90 CM) | Panel 3 - (90 CM) | Panel 4 - (90 CM) | Panel 5 - (90 CM) |

SKU Code MN1108

Design Concept Nature

Material Linen

Panel Width 90 CM

Size Custom

Flammability Class A (ASTM E84-19)



The panels should overlap by 5cm and trimmed during installation to ensure proper alignment with the design
The colors of the panels may vary by $\pm 5\%$ from the sample, as a result of the production process
During installation, expect a maximum deviation of $\pm 0.5\text{mm/m}$ in the length of the tiles or panels
Ensure that the sizes of the walls are verified for accuracy before production & installation



430 CM



280 CM

| Panel 1 - (90 CM) | Panel 2 - (90 CM) | Panel 3 - (90 CM) | Panel 4 - (90 CM) | Panel 5 - (90 CM) |

SKU Code MA843

Design Concept Abstract

Material Linen

Panel Width 90 CM

Size Custom

Flammability Class A (ASTM E84-19)



The panels should overlap by 5cm and trimmed during installation to ensure proper alignment with the design
The colors of the panels may vary by ±5% from the sample, as a result of the production process
During installation, expect a maximum deviation of ±0.5mm/m in the length of the tiles or panels
Ensure that the sizes of the walls are verified for accuracy before production & installation



430 CM



280 CM

| Panel 1 - (90 CM) | Panel 2 - (90 CM) | Panel 3 - (90 CM) | Panel 4 - (90 CM) | Panel 5 - (90 CM) |

SKU Code	MA1634
Design Concept	Abstract
Material	Linen
Panel Width	90 CM
Size	Custom
Flammability	Class A (ASTM E84-19)



The panels should overlap by 5cm and trimmed during installation to ensure proper alignment with the design
The colors of the panels may vary by ±5% from the sample, as a result of the production process
During installation, expect a maximum deviation of ±0.5mm/m in the length of the tiles or panels
Ensure that the sizes of the walls are verified for accuracy before production & installation



430 CM



280 CM

| Panel 1 - (90 CM) | Panel 2 - (90 CM) | Panel 3 - (90 CM) | Panel 4 - (90 CM) | Panel 5 - (90 CM) |

SKU Code MA1557

Design Concept Abstract

Material Linen

Panel Width 90 CM

Size Custom

Flammability Class A (ASTM E84-19)



The panels should overlap by 5cm and trimmed during installation to ensure proper alignment with the design
The colors of the panels may vary by ±5% from the sample, as a result of the production process
During installation, expect a maximum deviation of ±0.5mm/m in the length of the tiles or panels
Ensure that the sizes of the walls are verified for accuracy before production & installation



430 CM



280 CM

| Panel 1 - (90 CM) | Panel 2 - (90 CM) | Panel 3 - (90 CM) | Panel 4 - (90 CM) | Panel 5 - (90 CM) |

SKU Code MF1555

Design Concept Floral

Material Linen

Panel Width 90 CM

Size Custom

Flammability Class A (ASTM E84-19)



The panels should overlap by 5cm and trimmed during installation to ensure proper alignment with the design
The colors of the panels may vary by $\pm 5\%$ from the sample, as a result of the production process
During installation, expect a maximum deviation of $\pm 0.5\text{mm/m}$ in the length of the tiles or panels
Ensure that the sizes of the walls are verified for accuracy before production & installation



430 CM



280 CM

| Panel 1 - (90 CM) | Panel 2 - (90 CM) | Panel 3 - (90 CM) | Panel 4 - (90 CM) | Panel 5 - (90 CM) |

SKU Code MA1244

Design Concept Abstract

Material Metallic Linen

Panel Width 90 CM

Size Custom

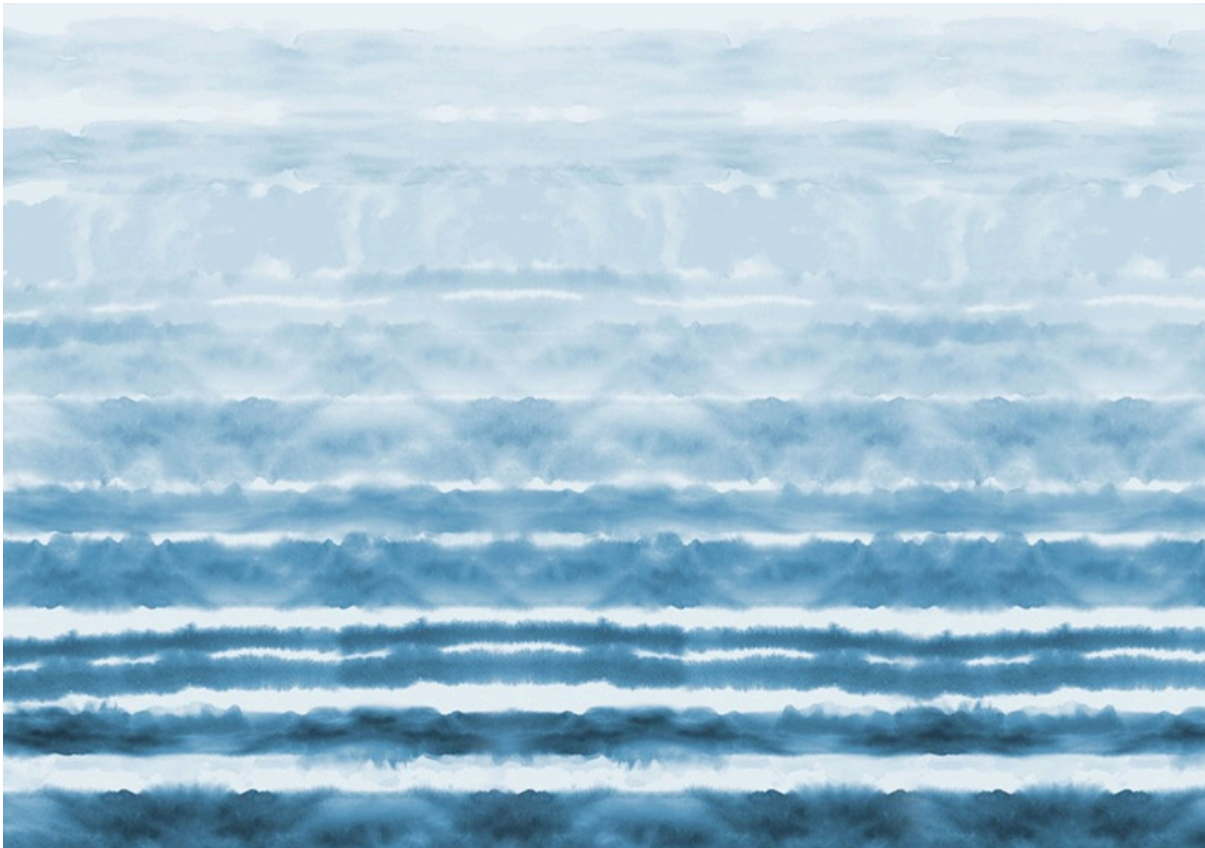
Flammability Class A (ASTM E84-19)



The panels should overlap by 5cm and trimmed during installation to ensure proper alignment with the design
The colors of the panels may vary by $\pm 5\%$ from the sample, as a result of the production process
During installation, expect a maximum deviation of $\pm 0.5\text{mm/m}$ in the length of the tiles or panels
Ensure that the sizes of the walls are verified for accuracy before production & installation



430 CM



280 CM

| Panel 1 - (90 CM) | Panel 2 - (90 CM) | Panel 3 - (90 CM) | Panel 4 - (90 CM) | Panel 5 - (90 CM) |

SKU Code MA1624

Design Concept Abstract

Material Metallic Linen

Panel Width 90 CM

Size Custom

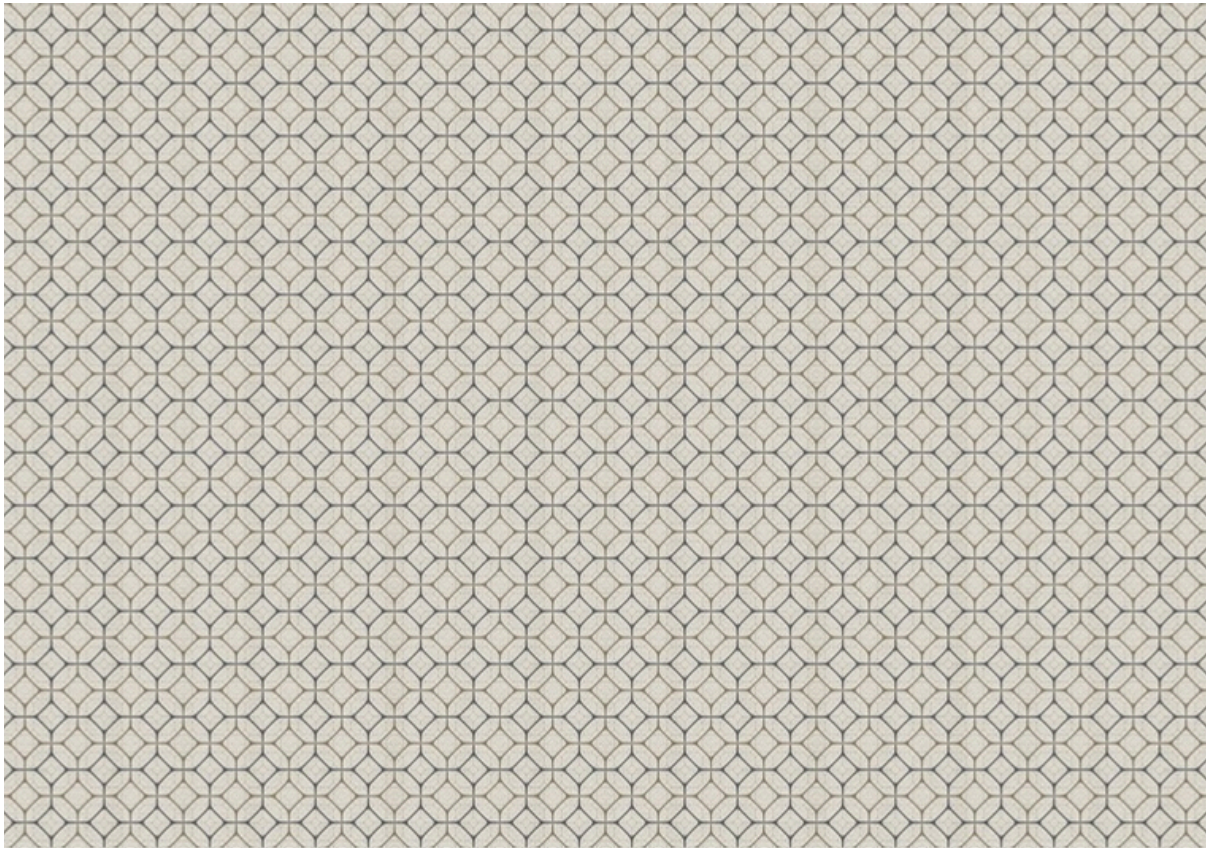
Flammability Class A (ASTM E84-19)



The panels should overlap by 5cm and trimmed during installation to ensure proper alignment with the design
The colors of the panels may vary by $\pm 5\%$ from the sample, as a result of the production process
During installation, expect a maximum deviation of $\pm 0.5\text{mm/m}$ in the length of the tiles or panels
Ensure that the sizes of the walls are verified for accuracy before production & installation



430 CM



280 CM

| Panel 1 - (90 CM) | Panel 2 - (90 CM) | Panel 3 - (90 CM) | Panel 4 - (90 CM) | Panel 5 - (90 CM) |

SKU Code MG1721

Design Concept Geometric

Material Metallic Linen

Panel Width 90 CM

Size Custom

Flammability Class A (ASTM E84-19)



The panels should overlap by 5cm and trimmed during installation to ensure proper alignment with the design
The colors of the panels may vary by ±5% from the sample, as a result of the production process
During installation, expect a maximum deviation of ±0.5mm/m in the length of the tiles or panels
Ensure that the sizes of the walls are verified for accuracy before production & installation



430 CM



280 CM

| Panel 1 - (90 CM) | Panel 2 - (90 CM) | Panel 3 - (90 CM) | Panel 4 - (90 CM) | Panel 5 - (90 CM) |

SKU Code MG1726

Design Concept Geometric

Material Metallic Linen

Panel Width 90 CM

Size Custom

Flammability Class A (ASTM E84-19)



The panels should overlap by 5cm and trimmed during installation to ensure proper alignment with the design
The colors of the panels may vary by $\pm 5\%$ from the sample, as a result of the production process
During installation, expect a maximum deviation of $\pm 0.5\text{mm/m}$ in the length of the tiles or panels
Ensure that the sizes of the walls are verified for accuracy before production & installation



430 CM



280 CM

| Panel 1 - (90 CM) | Panel 2 - (90 CM) | Panel 3 - (90 CM) | Panel 4 - (90 CM) | Panel 5 - (90 CM) |

SKU Code MN1727

Design Concept Nature

Material Metallic Linen

Panel Width 90 CM

Size Custom

Flammability Class A (ASTM E84-19)



The panels should overlap by 5cm and trimmed during installation to ensure proper alignment with the design
The colors of the panels may vary by $\pm 5\%$ from the sample, as a result of the production process
During installation, expect a maximum deviation of $\pm 0.5\text{mm/m}$ in the length of the tiles or panels
Ensure that the sizes of the walls are verified for accuracy before production & installation



430 CM



280 CM

| Panel 1 - (90 CM) | Panel 2 - (90 CM) | Panel 3 - (90 CM) | Panel 4 - (90 CM) | Panel 5 - (90 CM) |

SKU Code MF1256

Design Concept Floral

Material Natures Weave

Panel Width 90 CM

Size Custom

Flammability Class A (ASTM E84-19)



The panels should overlap by 5cm and trimmed during installation to ensure proper alignment with the design
The colors of the panels may vary by $\pm 5\%$ from the sample, as a result of the production process
During installation, expect a maximum deviation of $\pm 0.5\text{mm/m}$ in the length of the tiles or panels
Ensure that the sizes of the walls are verified for accuracy before production & installation



430 CM



280 CM

| Panel 1 - (90 CM) | Panel 2 - (90 CM) | Panel 3 - (90 CM) | Panel 4 - (90 CM) | Panel 5 - (90 CM) |

SKU Code MO1629

Design Concept Oriental

Material Natures Weave

Panel Width 90 CM

Size Custom

Flammability Class A (ASTM E84-19)



The panels should overlap by 5cm and trimmed during installation to ensure proper alignment with the design
The colors of the panels may vary by $\pm 5\%$ from the sample, as a result of the production process
During installation, expect a maximum deviation of $\pm 0.5\text{mm/m}$ in the length of the tiles or panels
Ensure that the sizes of the walls are verified for accuracy before production & installation



430 CM



280 CM

| Panel 1 - (90 CM) | Panel 2 - (90 CM) | Panel 3 - (90 CM) | Panel 4 - (90 CM) | Panel 5 - (90 CM) |

SKU Code MF1315

Design Concept Floral

Material Natures Weave

Panel Width 90 CM

Size Custom

Flammability Class A (ASTM E84-19)



The panels should overlap by 5cm and trimmed during installation to ensure proper alignment with the design
The colors of the panels may vary by $\pm 5\%$ from the sample, as a result of the production process
During installation, expect a maximum deviation of $\pm 0.5\text{mm/m}$ in the length of the tiles or panels
Ensure that the sizes of the walls are verified for accuracy before production & installation



430 CM



280 CM

| Panel 1 - (90 CM) | Panel 2 - (90 CM) | Panel 3 - (90 CM) | Panel 4 - (90 CM) | Panel 5 - (90 CM) |

SKU Code MA704

Design Concept Abstract

Material Natures Weave

Panel Width 90 CM

Size Custom

Flammability Class A (ASTM E84-19)



The panels should overlap by 5cm and trimmed during installation to ensure proper alignment with the design
The colors of the panels may vary by $\pm 5\%$ from the sample, as a result of the production process
During installation, expect a maximum deviation of $\pm 0.5\text{mm/m}$ in the length of the tiles or panels
Ensure that the sizes of the walls are verified for accuracy before production & installation



430 CM



280 CM

| Panel 1 - (90 CM) | Panel 2 - (90 CM) | Panel 3 - (90 CM) | Panel 4 - (90 CM) | Panel 5 - (90 CM) |

SKU Code MA597

Design Concept Abstract

Material Natures Weave

Panel Width 90 CM

Size Custom

Flammability Class A (ASTM E84-19)



The panels should overlap by 5cm and trimmed during installation to ensure proper alignment with the design

The colors of the panels may vary by $\pm 5\%$ from the sample, as a result of the production process

During installation, expect a maximum deviation of $\pm 0.5\text{mm/m}$ in the length of the tiles or panels

Ensure that the sizes of the walls are verified for accuracy before production & installation



430 CM



280 CM

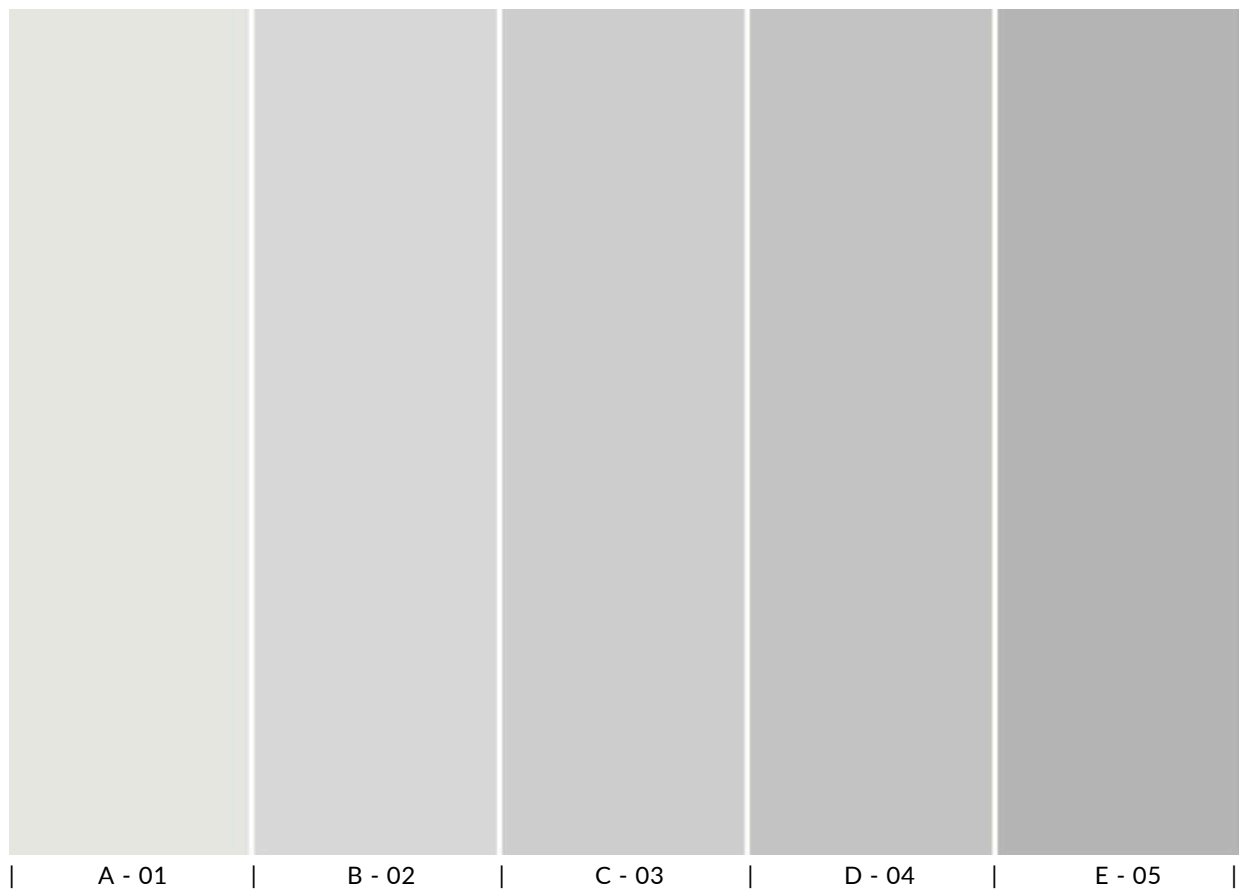
| Panel 1 - (90 CM) | Panel 2 - (90 CM) | Panel 3 - (90 CM) | Panel 4 - (90 CM) | Panel 5 - (90 CM) |

SKU Code	MA691
Design Concept	Abstract
Material	Natures Weave
Panel Width	90 CM
Size	Custom
Flammability	Class A (ASTM E84-19)



The panels should overlap by 5cm and trimmed during installation to ensure proper alignment with the design
The colors of the panels may vary by $\pm 5\%$ from the sample, as a result of the production process
During installation, expect a maximum deviation of $\pm 0.5\text{mm/m}$ in the length of the tiles or panels
Ensure that the sizes of the walls are verified for accuracy before production & installation





SKU Code	MB1747
Design Concept	Solid Color
Material	Metallic Linen
Panel Width	90 CM
Size	Custom
Flammability	Class A (ASTM E84-19)

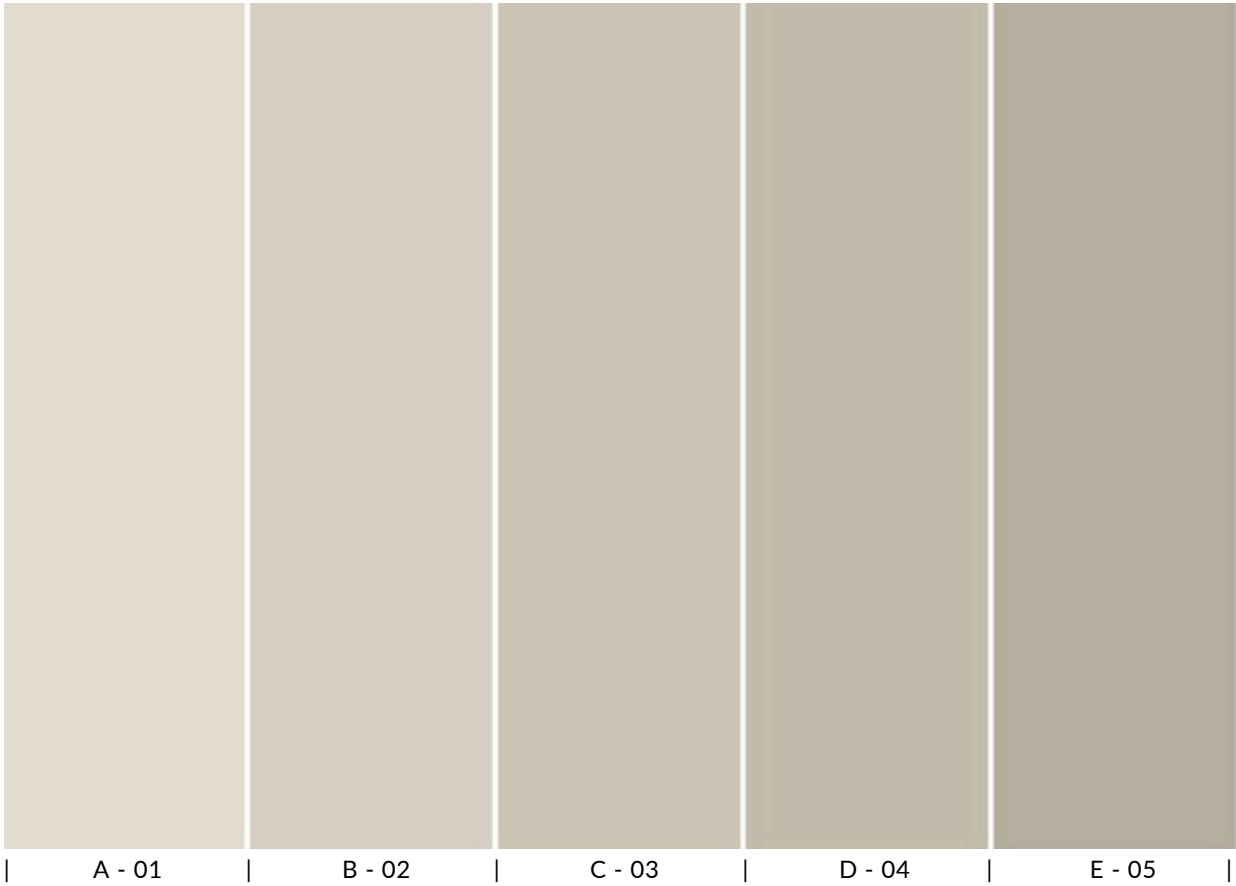
A high-quality interior design rendering of a modern office or meeting room. The room features a large, dark wooden conference table surrounded by beige leather chairs. The walls are covered in the 'Metallic Linen' material shown in the color swatches. There are two large windows with black frames, and the ceiling has a complex, industrial-style structure with exposed beams and multiple pendant lights. A brown leather sofa is visible in the background.

The panels should overlap by 5cm and trimmed during installation to ensure proper alignment with the design

The colors of the panels may vary by ±5% from the sample, as a result of the production process

During installation, expect a maximum deviation of ±0.5mm/m in the length of the tiles or panels

Ensure that the sizes of the walls are verified for accuracy before production & installation



SKU Code	MB1746
Design Concept	Solid Color
Material	Linen
Panel Width	90 CM
Size	Custom
Flammability	Class A (ASTM E84-19)



The panels should overlap by 5cm and trimmed during installation to ensure proper alignment with the design
The colors of the panels may vary by $\pm 5\%$ from the sample, as a result of the production process
During installation, expect a maximum deviation of $\pm 0.5\text{mm/m}$ in the length of the tiles or panels
Ensure that the sizes of the walls are verified for accuracy before production & installation





Dream | Design | Deliver

+ 9 7 1 4 5 7 6 2 6 0 0

+ 9 7 1 5 2 7 0 0 0 2 0 6

INFO@BSHWALLSANDFLOORS.COM

WWW.BSHWALLSANDFLOORS.COM