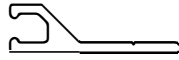
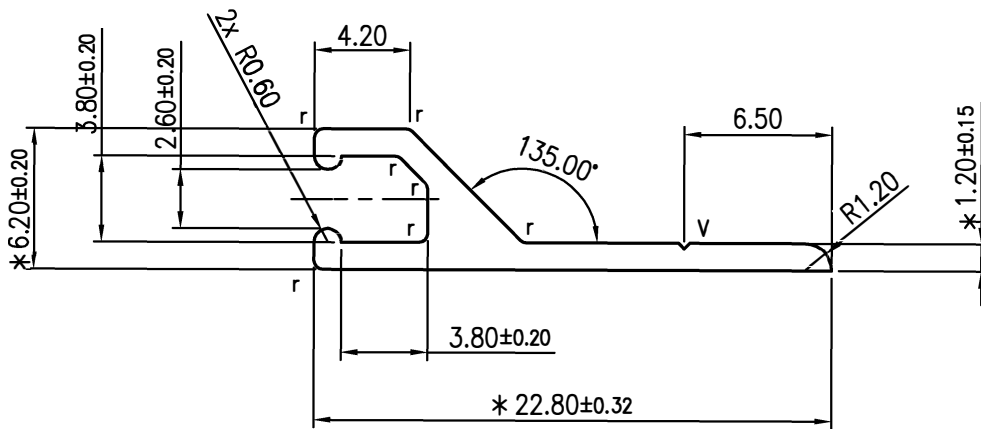


CLIENT <b>PHENIX INNOVATION</b>	CLIENT'S PART Nr. <b>18810</b>	APPLICATION	Doc.Nr. : 09.01.2 Rev.Status : 2 Date :20 NOV '98
------------------------------------	-----------------------------------	-------------	---



**FULL SIZE**



→ : METALLURGICAL STREAKING  
MAY OCCUR HERE →

Nr.	DATE	REVISION	APPRO	Nr.	DATE	REVISION	APPRO

UNSPEC WALL THICKNESS *1.20 <sup>±0.15</sup> mm	FLATNESS : 0.4 % x WIDTH	TWIST : 0.5° / 300 mm	R ≤ 5 : ± 0.40
	STRAIGHTNESS : 0.3 mm / 300 mm	ANGULARITY : ± 1°	R > 5 : ± 10%

MATING WITH SECTION : .		ALLOY: 6060-T5	SURF. FINISH : .	mm	REV.: .
CIRCUM DIA : 23.539 mm	REMARKS :	SECTION Nr. : .		REF. Nr. 1708088	
SECTION AREA : 43.433 mm <sup>2</sup>	* DENOTE IMPORTANT DIMENSION	DRAWN : .		SCALE : 1:1 / 3:1	
LINIER WEIGHT : 0.118 kg/m	--- INDICATES VISIBLE SURFACE	CHECKED : .	30 AUG 2017		
PERIMETER : 64.789 mm	UNSPEC. CORNERS RADIUS MAX. 0.30 mm	APPROVED : .			
FINISH : MF / ANODIZE	RAD IUSr=0.40				
	VEE GROOVE V=0.25x90°				

NOTE: THE DIMENSION TOLERANCES ON THIS DRAWING ARE ACCORDING TO ALUMINIUM STANDARDS DATA & DESIGN (AS PER THE DIMENSION TOLERANCES OF AUSTRALIA) AND S114094 (STANDARD INDUSTRY INDONESIA) UNLESS OTHERWISE SPECIFIED IN THE DRAWING