

FLIER



ESC for Boat 2S to 22S

User's Manual

www.fliermode.com

Tel: +86-0755-27905140

Business: sale@fliermode.com

Technic support: James@fliermode.com

Sales: Cathy@fliermode.com/Lisa@fliermode.com

Skype: Fliermode

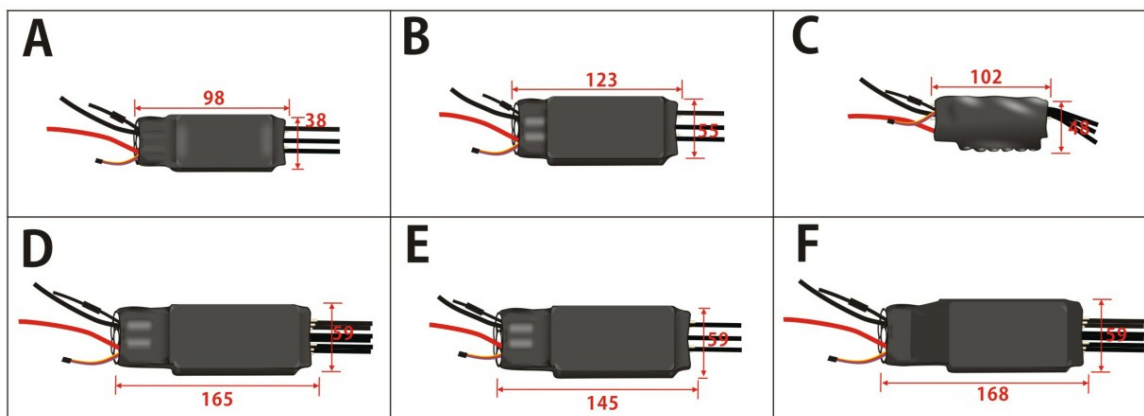
ESC for Boat Manual

Thank you for purchasing our products! For the high power of this brushless system, failure to use may result in injury yourself and damage of the whole device. So we highly recommend you to read carefully and abide by the operating procedures of this manual before the first flight. Our company is not responsible for your misuse of this product, or any damage including incidental losses or indirect losses you may cause. Moreover, we have not any responsibility for the modification of our products without authorization. We have the right to change the design, features, functions and operating requirement of our products without any advanced notice!

Feature

- 1.Design for boat, more functions
- 2.Battery voltage from 2S to 22SS for super high voltage version.
- 3.Two way communication while connecting it with computer.
- 4.Firmware can be upgraded by the user.
- 5.Simplely set function values by Prog-Box or by PC via USB link wire.
- 6.Motor test when power on.
- 7.Li-MH/Li-Po, Ne-Cd/Ne-MH, LiFe battery can be use.
- 8.Enables setting the voltage per cell for the point at which the controller's cut off circuitry engages. Li-MH/Li-Po from 2.0-3.6V,Ne-Cd/Ne-MH 0.4-1.0V, LiFe from 2.2-2.8V .
- 9.Timing settings may be adjusted (0°-30°)per degree to suit the motor type.
10. Three types of throttle curve.
- 11.Automatically detection the throttle range or can be set a fixed value by manual operation.
- 12.Auto cut off the power within 3 seconds if no radio signs.

Volts	Current Continue/Max	BEC	Size(mm)	Weight(g)	Pictures
2-7S	120A/180A	5V/3A	98*38*22	106	A
2-8S	200A/300A	5V/3A	123*59*26	270	B
	250A/320A	5V/3A	102*48*22	186	C
	300A/450A	5V/3A	168*59*26	400	D
3-12S	150A/250A	OPTO	145*59*26	350	E
	200A/300A	OPTO	123*55*26	270	B
	300A/450A	OPTO	165*59*26	400	D
3-16S	200A/300A	OPTO	123*55*26	320	B
	300A/450A	OPTO	165*59*26	460	D
	400A/550A	OPTO	172*57*35	460	F
4-22S	400A/550A	OPTO	168*59*35	460	F



Function Value

Reverse: **On**/Off.

Timing: **0°**、1°、2°、3°、4°.....30°。

Frequency: **8KHz**, 16 KHz, 32 KHz.

Acceleration: Soft / **Medium** / Hard。

Accumulator type: NiCd/NiMh、**Li-Ion/Li-Pol**、LiFe。

NiCd/NiMH CufOff: **No CutOff**、0.4V、0.5V、0.6V、0.7V、0.8V、0.9V、1.0V。

Number of cells: **Auto**, 2S, 3S22S.

LiIo/Pol CutOff: 2.0V、2.1V、2.2V、2.3V、2.4V、2.5V、2.6V、2.7V、2.8V、2.9V、**3.0V**、3.1V、3.2V、3.3V、3.4V、3.5V、3.6V。

LiFe cutoff: 2.2V、2.3V、2.4V、**2.5V**、2.6V、2.7V、2.8V

Cut Off Type: : **Slow down**、Hard。

Power limited forward: **Off**, 75%, 50%, 25%.

Power limited reverse: **Off**, 75%, 50%, 25%.

Delay time when direction convert: **0.25S**, 0.5S, 0.75S, 1S, 1.5S, 2S, 3S, 5S.

Reverse point: **Auto**、fixed 1.0mS、fixed 1.1mS、fixed 1.2mS、fixed 1.3mS。

Forward point: **Auto**、fixed 1.7mS、fixed 1.8mS、fixed 1.9mS、fixed 2.0mS。

Throttle curve: Logarithmical、**Linear**、Exponential。

Timing monitor: **ON**, Off.



Note: the red values are the factory default value.

Diagram for wire connection

1. Correctly connect the ESC to brushless motor, the receiver.

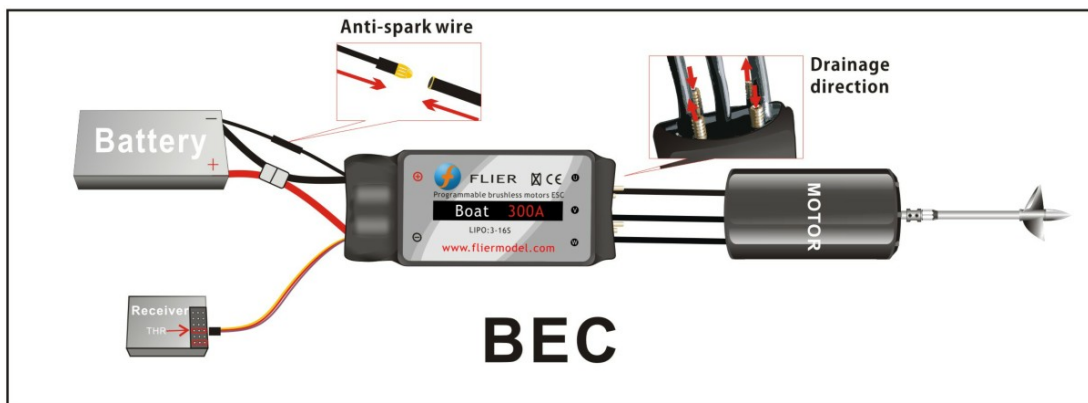
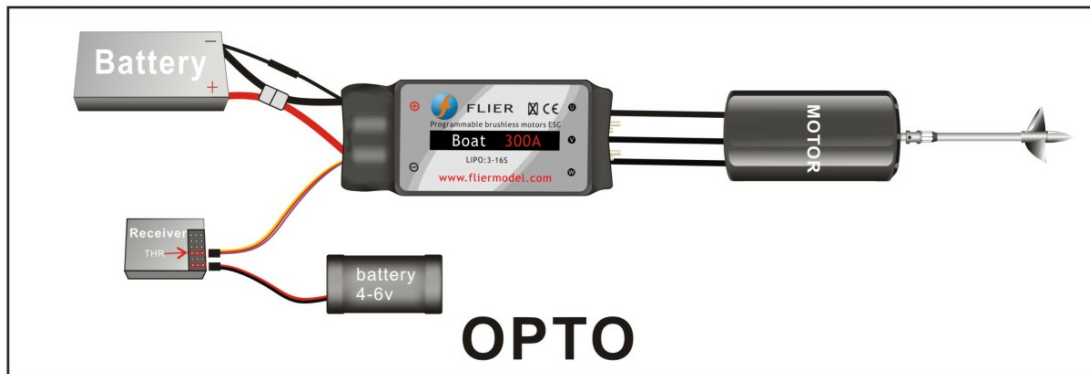
www.fliermodel.com

2. Connect the ESC with the battery pack, (Correctly use the Anti-spark wire while connect the ESC to battery pack).
3. Then you will hear 🎵 or 🎵 melody. (if you hear the other melody, please check your motor connection. The 🎵 melody means the ESC enter to forward only mode, The 🎵 melody means the ESC enter to forward and reverse mode, if you can hear a groups of beeps per 10 seconds, please check your receiver connection or your remote control).
4. Pushing the trigger, then the motor will start to work.

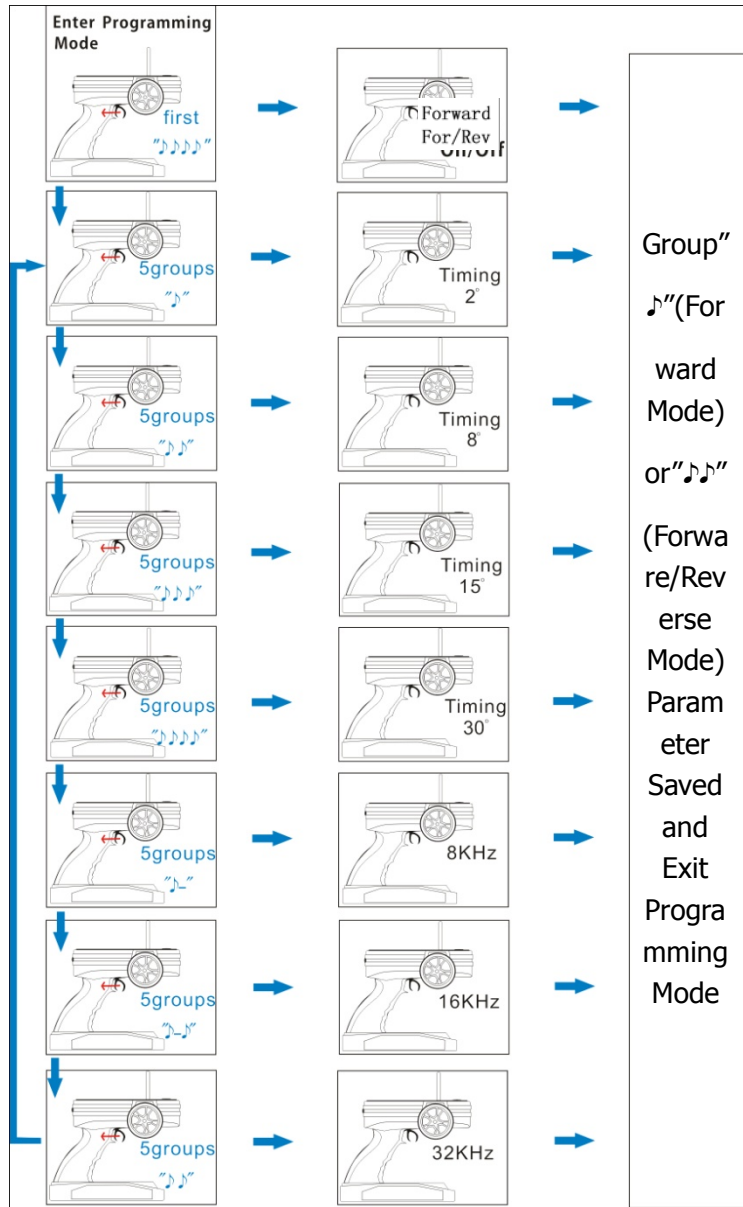


Notice: Correctly use the anti-spark wires.

The anti-spark wire including a bullet connector and an anti-spark resistor. So you can separate it into two wires. You must solder another wire on the negative wire of the battery pack. If you want to connect the ESC to the battery pack, you can connect the red wire of ESC to the positive wire of the battery at first. Then connect the anti-spark wires well. The last step is to connect the black wire of ESC to the negative wires of the battery. If do like that, no spark will be generated, and it will protect the main bullets connector from damaged.



Function value setting by t transmitter



This series ESC can be set some simple function values via the transmitter, but the more function value setting have to use prog-box or PC via USB link wire.

This ESC gets two different types of main mode, one is Forward-Only mode, and another is Forward&Reverse mode. Forward-Only mode is set, the motor will spin forward only. And if Forward&Reverse mode is set, the motor can spin forward and reverse.

Function value can be changed follow the step below:

1. Move the stick of the transmitter on full throttle position, power on the receiver.
2. After power on the ESC, you can hear "♪♪♪♪" melody; this indicates that the motor connection is ok.
3. Don't move the stick and wait about 5 seconds, a four-tone melody can be heard; this indicates that a main mode programming sequence is ready.
4. And then you will hear 5 groups "♪ (a short beep)", then 5 groups "♪♪", then 5 groups

" 1 1 1" and then 5 groups " 1 1 1 1"; and 5 groups " 1", 5 groups " 1-(a long beep) 1", 5 groups " 1 1". And these sounds of groups will circulate

5. Each group of 5 sounds stands for a different mode of ESC respectively.

6. You can put the throttle stick to the middle position during one group of 5 sounds, and then the corresponding mode is saved.

7. Hear 1 " 1"(Forward mode) or " 1 1" (Forward/Reverse mode), then you can exit the setting mode after saving the mode.

(When the mode is saved, you can disconnect the ESC to the battery pack)

◎ Forward-Only mode and Forward-Reverse mode:

After " 1 1 1" melody, Hear the " 1 1 1 1", put the throttle stick to the middle position, the mode is changed from Forward-Only mode into Forward&Reverse mode. If you want to change it back, please repeat the above procedures, and vice versa.

◎ Timing(motor ignition advance)function value:

1. Hear 5 groups " 1" or " 1 1" or " 1 1 1" or " 1 1 1 1" in the above circulation, put the throttle stick to the middle position.

2. Timing mode 1: 5 groups " 1"----0~7° (recommended for 2 poles and common motors)

3. Timing mode 2: 5 groups " 1 1"----8~15° (recommended for 4 poles motors)

4. Timing mode 3: 5 groups " 1 1 1"----16~23° (recommended for 8 poles motors)

5. Timing mode 4: 5 groups " 1 1 1 1"----24~30° (recommended for more than 10 poles motors and out runner motors)

◎ Setting of Frequency:

1. Hear 5 groups " 1-" or 5 " 1- 1" or 5 " 1 1" in the above circulation, put the throttle stick to the middle position.

2. Frequency 1: 5 groups " 1-"----8 kHz ((For common setting, the lowest efficiency loses)

3. Frequency 2: 5 groups " 1- 1"----16 kHz (recommended for the low internal resistance of motor)

4. Frequency 3: 5 groups " 1 1"----32 kHz (recommended for the low electrical inductance of motor)



Note: when the timing of motor is saved, please adjust motor on the ground before the flight

(Diagram for Option parameter assistant by transmitter)

Function value setting by program--- Box

By the Flier Program Box, you can set all of function value very simply. Setting procedure as follows:

1. Connect the 4pin connector of ESC with the 4PIN connector in Prog-Box. Make sure the direction is correct.

www.fliermodel.com

2. Connect ESC and motor.
3. Power on the ESC, and you will hear a "♪♪♪" melody, it prompts that the connecting is ok and you can go on.
4. "Great! Read ESC Data OK" will be displayed on the LCD screen (on the front of the Box).



after 1 second, it will enter the first function-MODE TYPE setting interface automatically. Then your esc type can be displayed on the LCD screen. "←" and "→" buttons make no difference because the ESC type can't be changed.

5. Press "Forward" button to enter the second function item-CONTROLLER TYPE. The ESC type which you purchased will be displayed on the LCD screen. "←" and "→" buttons make no difference because the ESC type can't be changed.

6. You can press "Forward" button enter desired function item, then press ← and → button enter desired value. You also can press "Back" button, then back to the last function item.

7. All setting is done. The LCD screen will display "Sending Data to ESC" if you press "Back" and "Forward" buttons. It prompts the setting value have sent to the ESC.

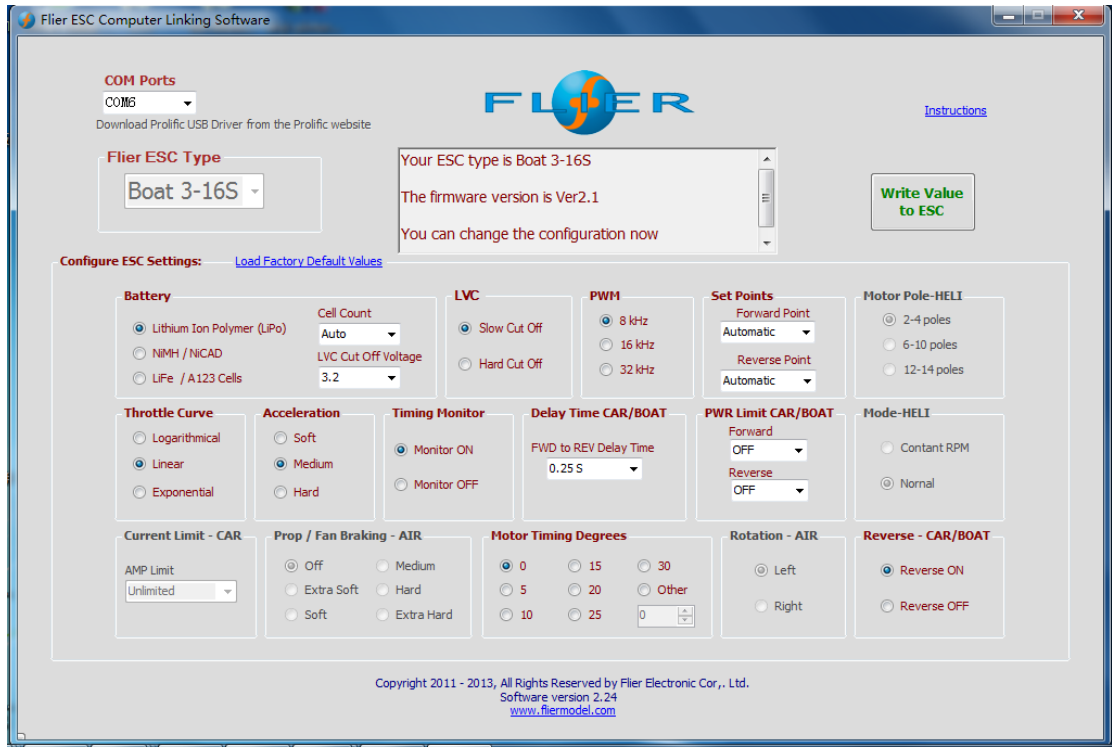
8. Turn off the power of the esc, and connect the power. You can inspect whether the function values were written in the ESC or not.

9. After setting over, turn off the ESC, disconnect the Prog-Box. Setting is done.

Notes: If you need restore Factory Defaults. You should disconnect the 4pin wires on the ESC after the prog-box reading the esc function value. Then connect the box with the 4pin wires from ESC. The prog-box can automatically restore the Factory Defaults after disconnecting. At this time, you need press "Forward" and "Back" buttons. The Factory Default value will be sent to the esc. So the ESC will be the Factory Defaults Value ESC.

Function value setting by PC

An excellence in this series ESC is that they can be set function value via PC. By a match software designed our company, via a USB Linker, a ESC can communicate with PC, then you can Easily set the ESC function value on PC screen.



If use firstly, you must install the USB Linker driver and the ESC setting software.

Installation of USB Linker' driver

- The below are the instructions of how to install the driver under Windows XP,
1. Firstly plug the USB linker into the USB port on the computer. The computer will automatically detect the USB linker and ask for installation of the USB driver. The computer screen shows the window "Found new hardware wizard ". Press "Next" button.
 2. Please select "Install from a list or special position (Advanced)" and press "Next" button.
 3. Please select "Search for the best driver in these locations" and check "Include this

location in the search". In the search dialog specify the location of the USB driver that is located in the CD or driver download folder "USB driver".

4. The above steps probably need to be repeated. If any same prompt appear, please repeat the installation steps carefully until the installation process is complete.
5. Open Windows Device Manager. (Control panel "C system "C device manager)
6. Find "Ports (COM & LPT)" in the list and click the "+" sign to its left.
7. Find the line that reads "Prolific USB-to-Serial Comm. Port (COMX)". The "x" value is the COM port number that was assigned to the USB to serial converter. This is the port that will need to be selected in the Flier ESC Computer Linking Software. Make note of it.



Note: different computer will have different the number of COM port, remember it, you will use the number in the ESC setting software.

Flier ESC Computer Linking Software Installation

The installation of Flier ESC Computer Linking Software is as the same as the normal windows software. In windows system, you run simplify setup file, and then install it easily according to the prompt. After installation finish, you can run the software.

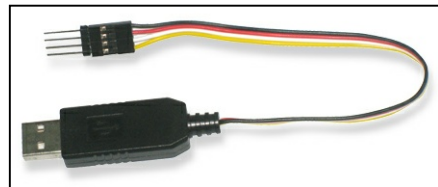
Only after the Flier USB linker connects the Flier ESC to the computer, the software can be operated.

Flier ESC Computer Linking Software Interface Overview

1. The top-left of the interface is "Select COM Port", "ESC type", this will be for com port select and the Flier ESC type display.
2. The top-middle of the interface is a text box. it can display some messages of the software progress.
3. The middle main area of the interface is the program area. You can program the setting value of the ESC here.
4. The top-right of the interface is a write data button. You can press it to write the setting value into the ESC.
5. The bottom of interface displays the copyright and company website information.

How to program the ESC

1. This is very important. Disconnect the battery, the motor and the receiver. I.e. disconnect all connections of the ESC.
2. Launch the Flier ESC Computer Linking Software. You can see a interface which the above mention.



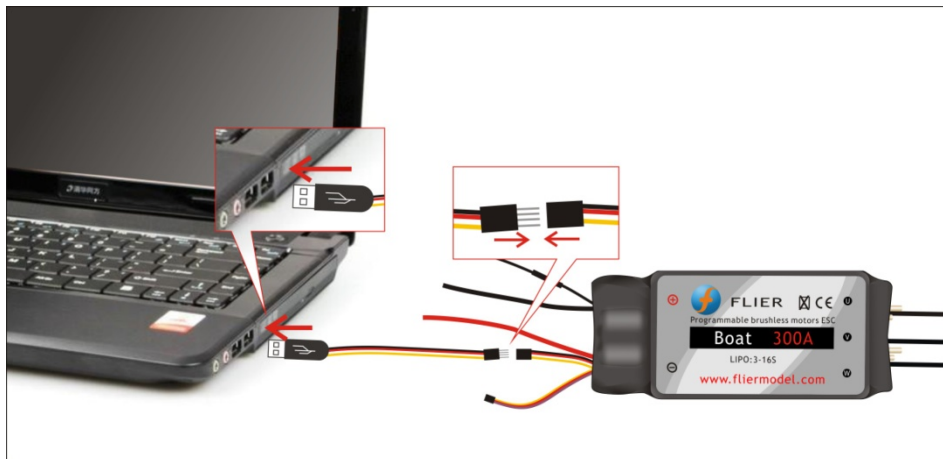
Because the Flier ESC is not connected, the interface isn't operated now.

3. Plug your Flier USB linker into the computer, and if the USB linker driver has been installed correctly. The com port can be automatically selected, the automatic selection usually is right, but some computer have too many com port is using. An error com port selection is possible, in this condition; you must select the correct com port which the

www.fliermodel.com

above mention.

4. Connect the 4pin wires of the USB linker to the 4pin wires of the ESC, pay attention to the color of the wires, must ensure the same color wires connect together, or you will possibly damage the ESC. If you connect correctly, the Flier ESC type will display in the ESC type column. If don't display correctly, you can pull the 4pin wires and plug again, till the display is correct.
5. You can see the setting value in the Flier ESC will display the program area. So you can easily know the setting value of the ESC at current.
6. You can change any setting value from the program area; you also can press the "load factory default" text to load the factory default value.
7. After you finish your adjustment. Press the top-right "write" button, your setting value will write into the ESC.
8. Disconnect the 4pin wires,
9. Exit the flier ESC computer software,
10. Pull out the USB liker. Now, your ESC has been programmed.

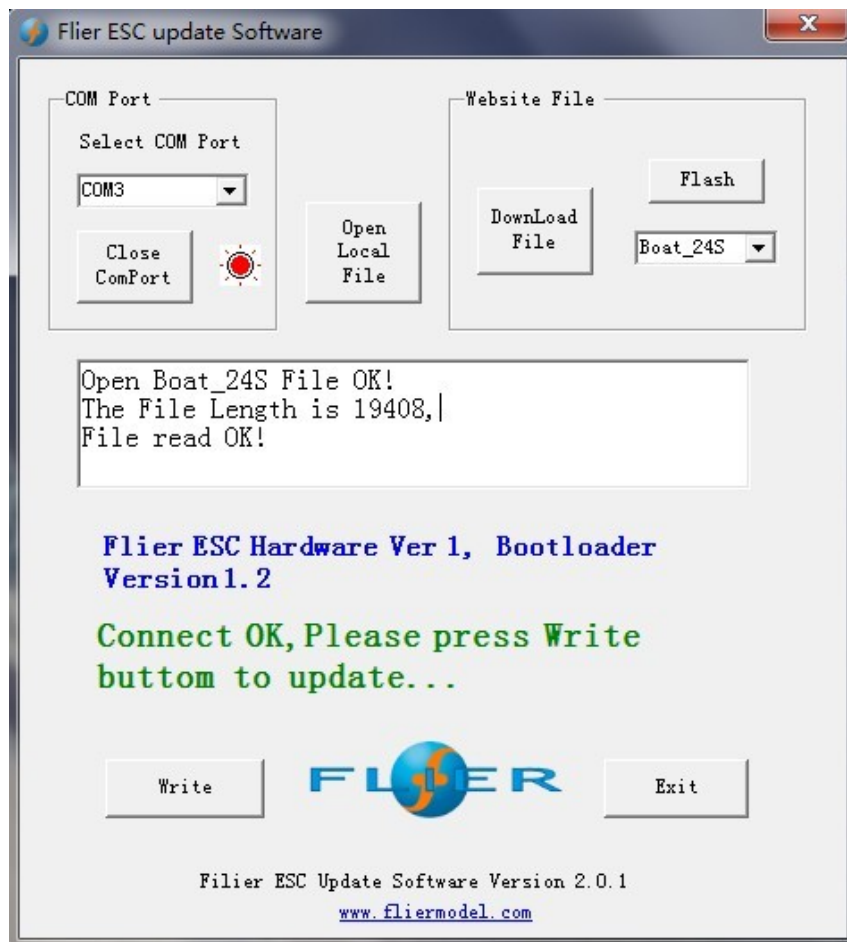


Setting ESC Firmware

1. Insert the USB link into an USB port of the computer.
2. Run the Update software, the "Com port" will be selected automatically. In case of an error comport choice, please select the correct comport.
3. Selecting the firmware you want to update from "Website File" list, then click the "Download file" button. A prompt that the file is opened will show in the below text box.
4. Disconnect the motor and the battery from the ESC, note, this is very important.
5. Plug into the four pin connector of USB link into the 4pin connector of ESC .Pay attention to the color of the wire, make sure the same color wire is connected.
6. Then the software will prompt the connection is OK, If prompt any error, please pull up the 4pin then repeat step5.
7. If no error, click the "Write" button, then the ESC firmware, will be updated automatically you can watch the process of the updating.

www.fliermodel.com

8. After the updating is over, you can disconnect the 4pin wires.



Updating the firmware

- 1, Plugging the USB Linker wires, be sure that the USB linker wires driver was installed,
2. Running the software, click the "Flash" button. After a "Download ESC type OK" message displays in the text box, you can reboot the software. (The second step must be done, if not, the firmware types which you need for the ESC can't be recognized).
3. Choose the correct port from "Select COM Port",
4. Choose the firmware which you need, the next step is click "Down Load File" button. "File read OK!" message will appear.
5. Disconnect the power of the ESC and BEC.
6. Plugging 4pin of the ESC into the 4 pin of USB Linker. "connect OK, Pl....." message will appear.
7. If any errors pull out 4pin wires then repeat step 6 still correct message.
8. Clicking "Write" button. The ESC will be updated software now.
9. Waiting, until "update to 113 pages, errors pages 0....." appear, tell you the updated software succeed.
10. You can disconnect the 4pin of the ESC from the USB Linker now.

www.fliermodel.com