



**Grow Lights**  
AUSTRALIA

## PRODUCT INFORMATION

The High Light board is one of the only true full-spectrum LED boards on the market for true spectrum connoisseurs, with added UV, near-UV, Red, Deep Red and Far Red light - all running off one driver. Other boards require costly supplemental lighting (UV, near-UV, Cyan, Deep Red, Far Red), or run off multiple channels - meaning they require additional drivers with added expense.

High Light – the ‘true’ full spectrum LED board

Blending three different types of high-efficiency LED, our High Light is the first “true” full-spectrum LED grow board that provides light all the way from 400-800nm, including UVA and Far Red, on one channel.

No other grow light combines high CRI95 with up to 2.5 umol/j efficiency and a complete spectrum powered by a single LED driver. High Lights boost flowering yields and essential oils without the cost or complexity of supplemental grow lights.

This 220w kit is designed for up to a 90cm x 90cm and will replace a 315w cmh or 400w hps.

Powered by Meanwell Drivers

All our Highlight Led kits feature High efficiency dimmable Meanwell drivers. Meanwell XLG drivers come with external dimmers as standard dimming all the way down to just 40w via the dimming knob. They also accept 0-10v controllers with our add on kit, are ip67 rated and come with a full 5 year warranty.

Led tech.

Sunlike CRI 95 LED with its 415nm “UV pump” not only makes this a true full-spectrum board, it provides a small amount of UVA and a noticeable amount of near-UV (400nm-430nm) not found in common “blue pump” LEDs and other single-channel boards.

Nichia’s Optisolis 2700K LED not only has an extremely high CRI of 98, it adds a significant amount of Red (600-650nm), Deep Red (650-700nm) and Far Red (700+nm) light to the board that boosts yields and reduces flowering times.

Nichia’s 757 V3-F1 series, which is claimed to be the most efficient 3030 LED on the market. We chose CRI90 2700K diodes for their added red and quantum efficiency (2.75umol/j at 55% efficiency). They power 70% of the board and lift these boards to an overall efficiency of 2.47 umol/j at 1.5A.

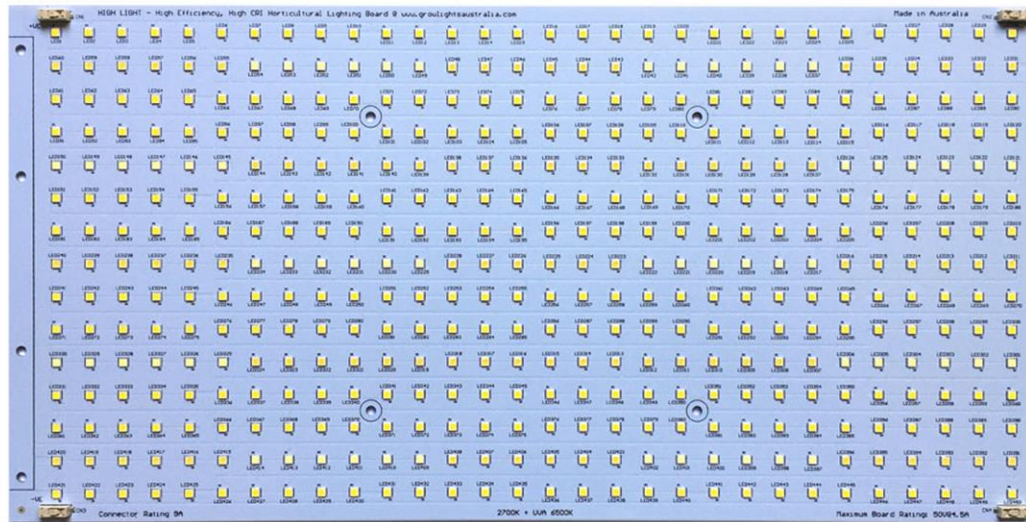
450 mid-power 3030 LEDs

300x Nichia 757 V3-F1 CRI90 2700K

90x Nichia “Optisolis” CRI97 2700K

60x Seoul Semiconductor “Sunlike” CRI95 6500K UVA

Designed and manufactured in Australia. Authorized distributor for growlightsaustralia.com



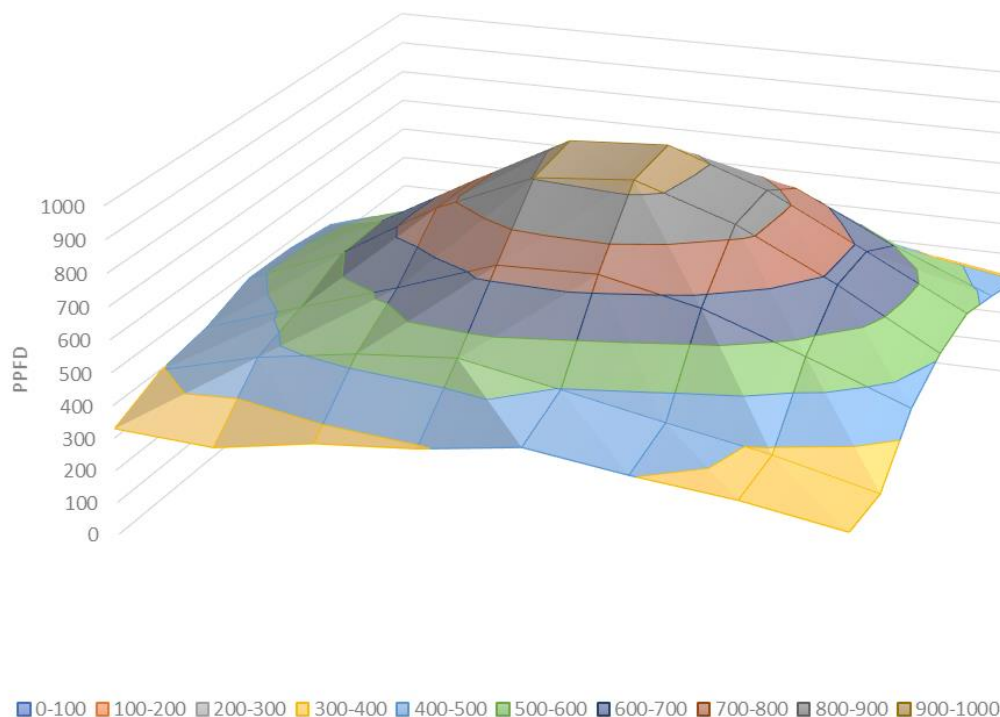
#### 1. Safety/USER Guide

- ☐ Do not remove protective cover, doing so voids your warranty.
- ☐ Do not touch the leds surface.
- ☐ Do not look directly at the light. Eye protection is advised.
- ☐ Handle the light by the framework.
- ☐ Warning!!! Light will get hot during operation, never touch it when in operation.
- ☐ Disconnect from mains before handling.
- ☐ Do not spray with water
- ☐ For indoor use only!

## HIGHLIGHT 220W

The 220w highlight Led lighting kit will effectively replace a 315wcmh in up to a 90cm x 90cm area. We recommend running this light at 24"-18" for veg growth and 18"-14" for flowing.

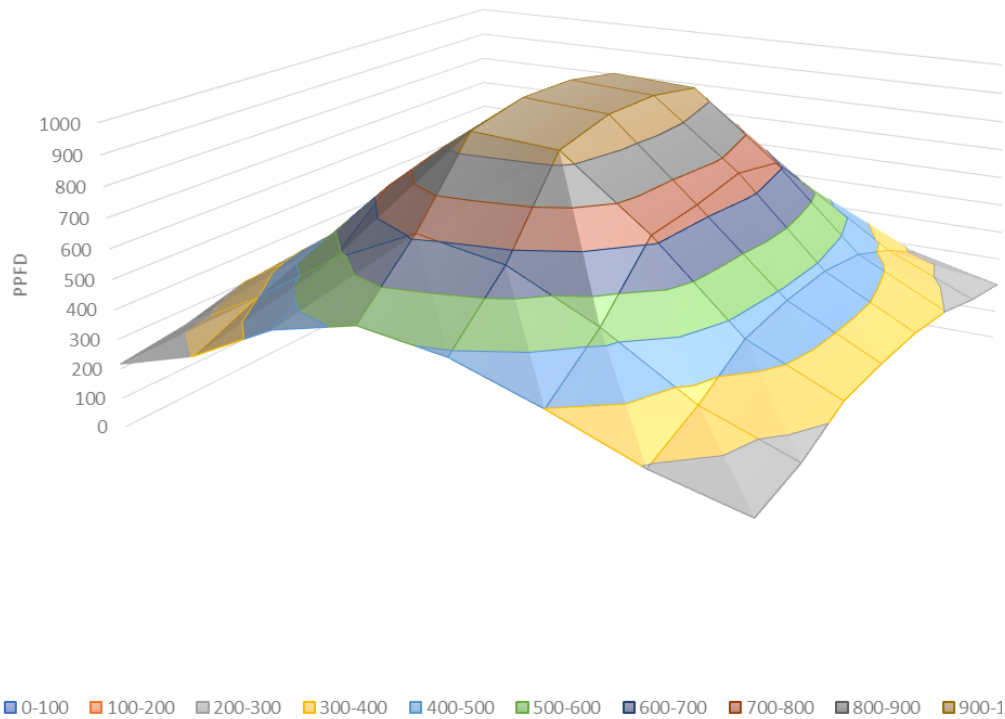
Highlight Light distribution- 0.8m x 0.8m area 14"



## HIGHLIGHT 440W

The highlight-440 Led lighting system will effectively replace a 600w HPS or 630w cmh in up to a 1.2m x 1.2m area. We recommend running this light at 24" for veg growth and 16"for flowering.

Highlight-440 Light distribution- 1.2m x 1.2m (16")



## HIGHLIGHT 440W XL

The highlight-440 XL Led lighting system will effectively replace a 600w HPS or 630w cmh in up to a 0.8m x 1.6m. We recommend running this light at 24" for veg growth and 18"for flowering.



## ELECTRICAL SPECIFICATIONS

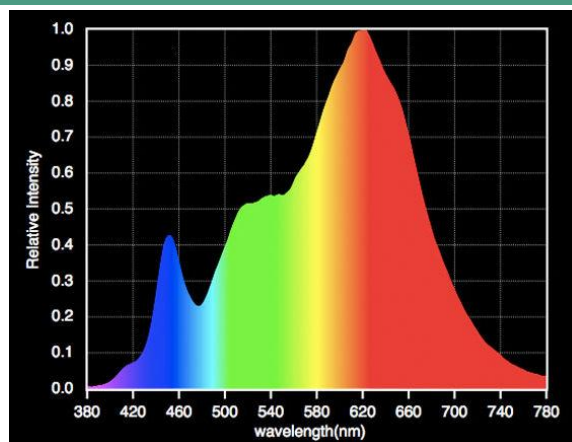
| Product        | Input voltage<br>(auto sensing) | Amps (AC)       | Total<br>Wattage |
|----------------|---------------------------------|-----------------|------------------|
| HIGHLIGHT 220W | 100-305V                        | 0.95/<br>230VAC | 220W             |
| HIGHLIGHT 440W | 100-305v                        | 1.9/ 230VAC     | 440W             |
| HIGHLIGHT 440W | 100-305v                        | 1.9/ 230VAC     | 440W             |

## OUTPUT/SIZE SPECIFICATIONS

| KIT               | EFFICIENCY     | SIZE              |
|-------------------|----------------|-------------------|
| HIGHLIGHT 220W    | 2.2-2.5 UMol/j | 400MM X 203MM     |
| HIGHLIGHT 440W    | 2.2-2.5 UMol/j | 400MM X 203MM(X2) |
| HIGHLIGHT 440W XL | 2.2-2.5 UMol/j | 888mm x 203mm     |

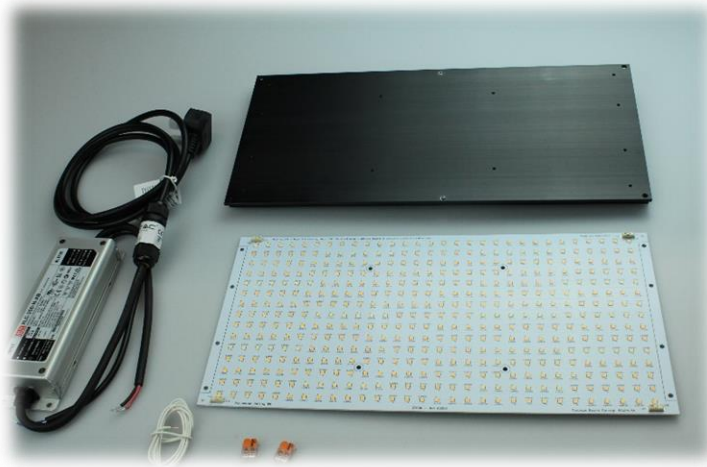
## SPECTRUM SPECIFICATIONS

cct = 3000k  
cri =94CRI  
Beam angle = 120

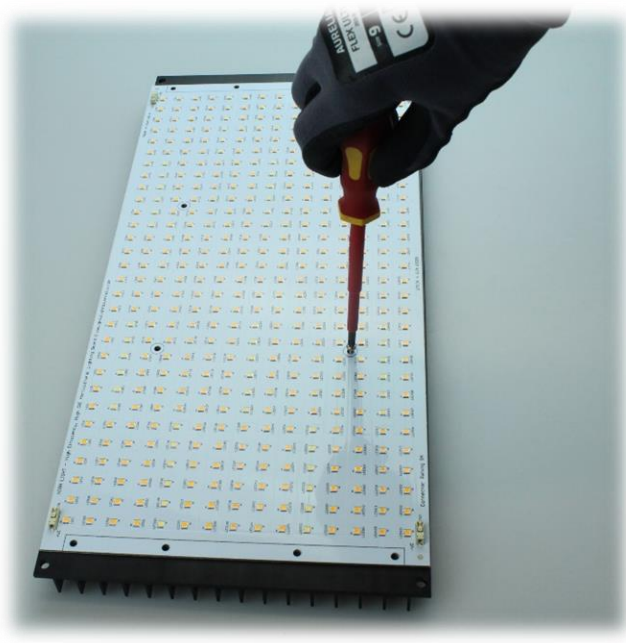


## ASSEMBLY GUIDE.

1. Lay out all components on a clean flat surface(not carpet)



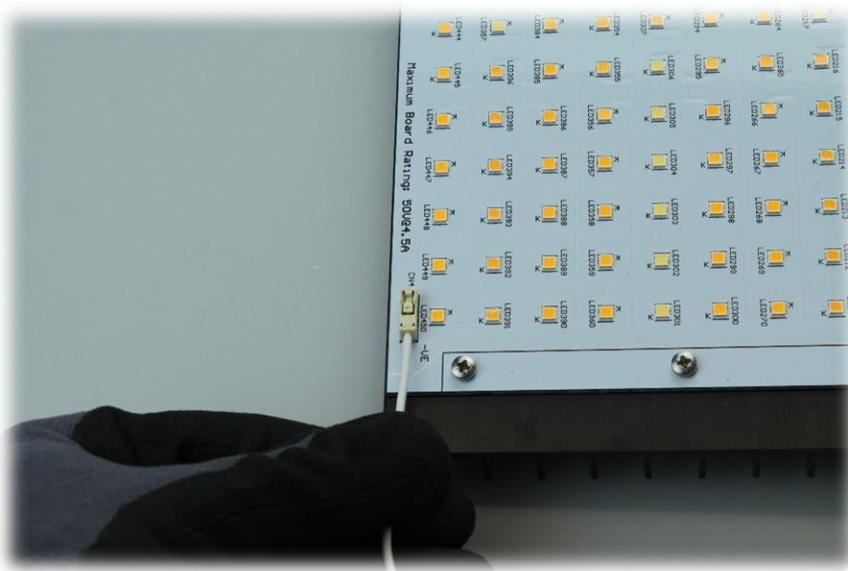
2. Screw PCB (LED) board onto heatsink, securing firmly with screws provided.



3. Connect the pre stripped solid core wires from the driver to the wago connectors provided.



4. Insert the Solid core wire into the board connectors making sure the + and - wires from the driver, match the + and - connectors. (red is +) (Black is -)





## DIMMING

---

All of our HIGHLIGHT products feature dimmers. That dim the light down to 10% .

- Locate the dimming knob.
- Turn dimming knob anti clockwise to dim the product.,

We recommend dimming the light to start with and working up the output.

## CLEANING

---

We recommend cleaning the light every 6 months with IPA and a microfiber cloth

## WARNING

---

- The Manufacturer/Distributor/retailer will not be held responsible for damage caused by misuse of the product.
- Please read the safety guide before operation.

## WARRANTY

---

Our highlight products are offered with a 3 year replacement parts warranty. Proof of purchase must be shown and defective parts returned. Removing any void stickers on the driver will void your warranty

**DIYLED UK**  
FULL SPECTRUM LIGHTING