

# PAXTON MESSENGER PAPER PATTERN

**NOTE:** Paper Patterns are intended for experienced leathercrafters.

## WHAT'S INCLUDED?

Paper Pattern

## RECOMMENDED MATERIALS

8 to 10 oz (3.2 to 4 mm) Semi-Firm to Firm Tempered Leather (3 sq. ft.)

4 to 6 oz (1.6 to 2.4 mm) Semi-Firm to Firm Tempered Leather (6 sq. ft.)

Button Studs (2)

Open Back Screw Posts (6)

Loctite® Threadlocker

## REQUIRED TOOLS

Knife

Straight Edge

Bell Skiver, Skiving Knife, or Wide Edgers

Scratch Awl

Round Drive Punches

Staples or Needle & Thread

Medium Flathead Screwdriver

## RECOMMENDED TOOLS

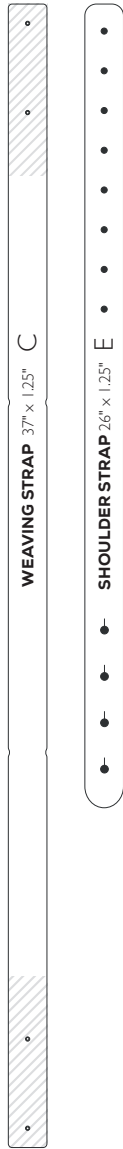
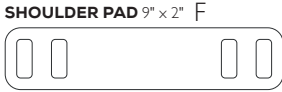
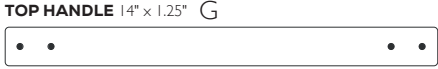
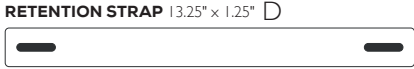
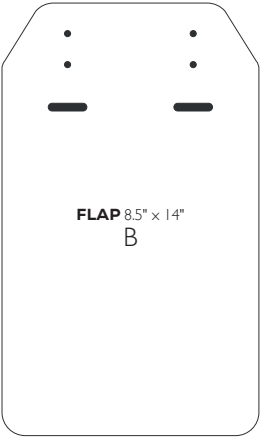
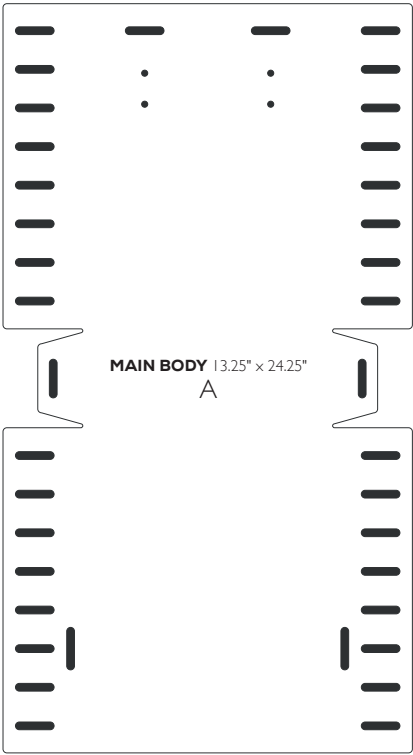
Edge Finishing Materials

LABEL	PATTERN PIECE	PIECES REQUIRED	RECOMMENDED LEATHER WEIGHT
A	Main Body	1	4 to 6 oz (1.6 to 2.4 mm)
B	Flap	1	4 to 6 oz (1.6 to 2.4 mm)
C	Weaving Strap	1	8 to 10 oz (3.2 to 4 mm)
D	Retention Strap	1	8 to 10 oz (3.2 to 4 mm)
E	Shoulder Strap	2	8 to 10 oz (3.2 to 4 mm)
F	Shoulder Pad	1	8 to 10 oz (3.2 to 4 mm)
G	Top Handle	1	8 to 10 oz (3.2 to 4 mm)
H	Keepers*	2	4 to 6 oz (1.6 to 2.4 mm)

\*\* Keepers will need to be stitched or stapled.

\*\* Please note the type of leather and tools you use will affect the outcome. Please use your best judgment when assembling your project. We recommend outlining the order of operations, measure and count twice before making any permanent alterations to your pattern.

# PROJECT OVERVIEW



## PAPER PATTERN CARE INSTRUCTIONS

OPTION 1: Before cutting out pattern pieces, adhere a stiffer paper (cardstock or similar) with preferred adhesive.

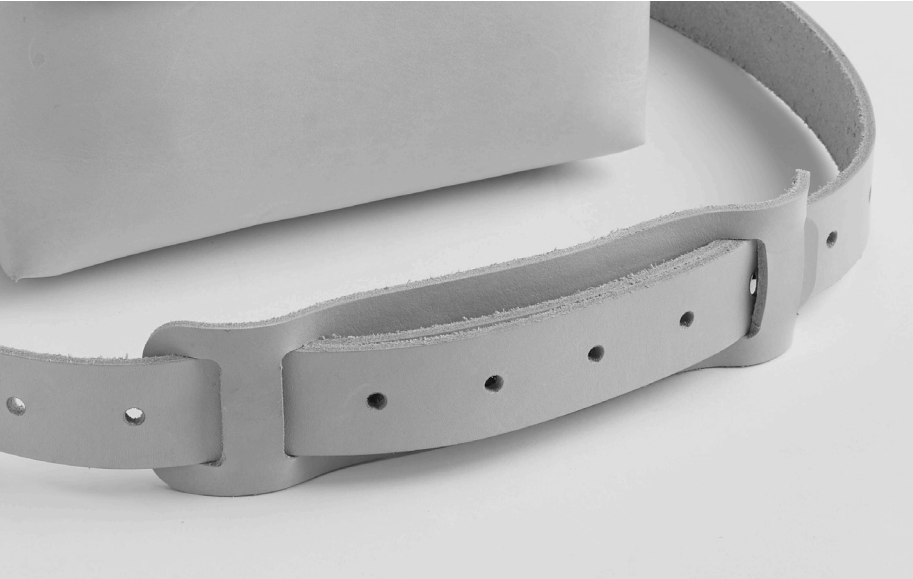
OPTION 2: After cutting out pattern pieces, laminate individual pieces.

These are just suggestions to prolong the lifespan of the paper pattern. With proper care, these patterns can be used again and again!

## ASSEMBLY INSTRUCTIONS

1. Cut required pieces. Before assembly, take the necessary steps to prepare leather and edges.
2. Insert the Top Handle (G) through the horizontal oblong holes on Flap (B) with grain sides facing up.
3. Thread the Top Handle (G) through the same oblong holes on Main Body (A), and then tightly secure A, B and G with four Open back Screw Posts where the holes are marked (holes should be punched prior to threading everything together.)
4. Assemble the Main Body (A) by gently folding in half and threading the Weaving Strap (C) in and out of the gussets. Be sure the bottom “flaps” are the inner most layer, followed by the back (with Flap (B) attached) and then the front.
5. Insert the Retention Strap (D) through the vertical oblong holes on the front of Main Body (A), making sure the Weaving Strap (C) interlocks with the Retention Strap (D) securing it into place
6. Slide the Keeper (H) onto the end of the Weaving Strap (C) secure with Button Studs in the provided hole guides. Be sure to fold the leather towards the bag.
7. Take hold of Shoulder Pad (F), insert Shoulder Strap (E) down into the outer slot and up through the inner slot on either side. Make sure you are working with the side of the Shoulder Strap (E) with the eight holes punched.
8. Adjust the Strap to your desired length and secure with two of the Open Back Screws.
9. Slide the opposing end of each strap through the corresponding Keeper (H) and attach to the Button Studs. Adjust accordingly to preference.

**COMPLETED PROJECT**



EST **tandy**<sup>®</sup> 1919  
LEATHER

FOR MORE PATTERNS, PROJECTS, AND TIPS,  
VISIT [TANDYLEATHER.COM/BLOG](http://TANDYLEATHER.COM/BLOG).

Distributed by Tandy Leather: 1900 SE Loop 820, Fort Worth, TX 76140  
Made in the USA.  
©2022 Tandy Leather: All rights reserved