

ADALYNN CROSSBODY KIT

KIT DE BANDOLERA ADALYNN
BANDOULIÈRE ADALYNN KIT

LEVEL

1

KIT CONTAINS:

Pre-Cut, Pre-Punched Leather
Snake Chain
Chain Anchors (2)
Chicago Screws (6)
Instructions & Pattern



French and Spanish
Instructions available
online at:

TANDYLEATHER.COM
TANDYLEATHER.CA



YOU WILL NEED:

- Small Phillips Screwdriver

LEVEL UP WITH TANDY

LEVEL 1	LEVEL 2	LEVEL 3	LEVEL 4
Includes basic project assembly skills with no hand-sewing or hardware setting required. Plus, learn additional skills like lacing, braiding, and knot tying.	Introduces skills like hand-sewing with pre-punched stitching holes, hardware setting, and edge burnishing.	Build your skills with more added components, project layers, and detail work like edge beveling and edge dyeing.	Can be machine or hand sewn and do not have pre-punched stitching holes. Learn new skills like skiving, wet molding, heat creasing, and more.

PLEASE READ ALL INSTRUCTIONS BEFORE BEGINNING PROJECT.

WHAT'S INCLUDED?

- Bag Body (A)
- Keeper (B)
- Snake Chain (C)
- Chain Anchors (D)
- Chicago Screws (E)

Not Shown:

Instructions & Pattern

Scan this code with your phone to learn about these skills and more!



SKILLS USED:

- Hardware Installation
- Braiding

OPTIONAL TOOLS:

- Painter's Tape or Binder Clip

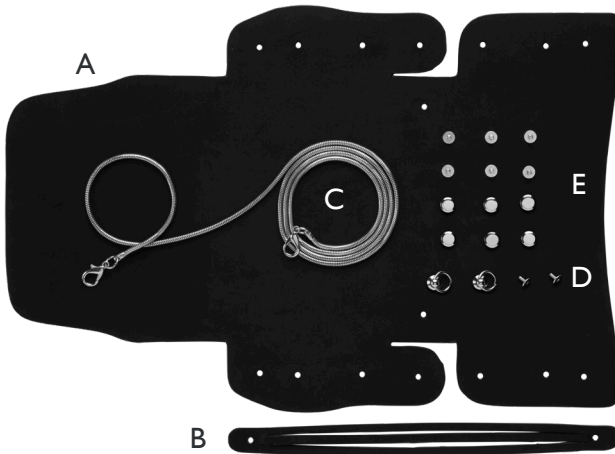
GLOSSARY:

FLESH SIDE: The underside of an animal's hide. On veg-tanned tooling leather, this is the rough side.

GRAIN SIDE: The hide's surface that had the hair of the animal. Typically used for carving and stamping.

PRECAUTIONS:

Please use caution when applying leather conditioner. Dyed leather may transfer.



WARNING:

CHOKING HAZARD - small parts. not for children under 3 years.



BRAID LEATHER KEEPER

1. Place Keeper (B) flesh side down. **Pro Tip: Secure the end to something sturdy with a piece of tape or binder clip.**
2. The Keeper (B) has 3 strips. We will reference the strips as 1,2,3. (Figure 1)
3. Begin by folding the bottom end up and through strips 2 & 3. (Figure 2)
4. Cross strip 1 over and between strip 2 & 3. (Figure 3)
5. Cross strip 3 over and between 1 & 2. (Figure 4)
6. Cross strip 2 over and between 1 & 3. (Figure 5)
7. Hold the braid between pointer finger and thumb and fold the bottom end up and through strips 2 & 3. (Figure 6)

Figure 1

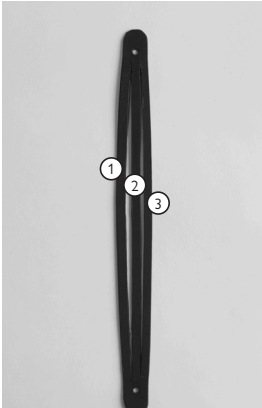


Figure 2



Figure 3



Figure 4



Figure 5



Figure 6



8. Pull the end through and continue braiding with the same sequence as above.
9. Cross strip 1 over and between strip 2 & 3.
10. Cross strip 3 over and between 1 & 2.
11. Cross strip 2 over and between 1 & 3.
12. At this point the strips should still be all parallel below the braid and you can begin the sequence again by folding the bottom end up and through strips 2 & 3. (Figure 7 & 8)
13. Continue braiding.
14. Cross strip 1 over and between strip 2 & 3.
15. Cross strip 3 over and between 1 & 2.
16. Cross strip 2 over and between 1 & 3.
17. At this point there should be a full braid, but it may be tighter towards the top. Loosen the top portion and evenly distribute the tension among the strips. (Figure 9) **Pro Tip: Always fold the end up and through strips 2 & 3. Braid 3 times and repeat.**

Figure 7



Figure 8



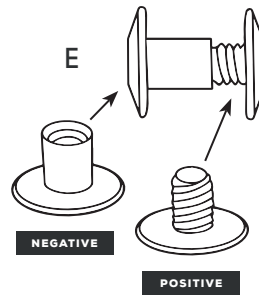
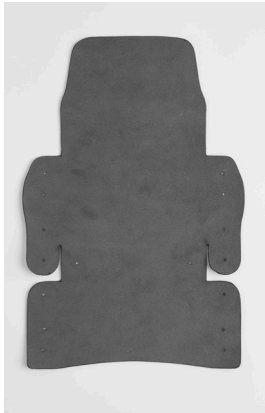
Figure 9



ASSEMBLING THE BAG BODY

18. Start by laying Bag Body (A) flesh side up. (Figure 10)

Figure 10



19. Insert a negative Chicago Screw (E) from the grain side of the offset interior punch hole. Fold the outer tab in and over the Chicago Screw (E). Insert the positive Chicago Screw (E) and tightly secure using a phillips screwdriver. The goal is to align and overlap the two adjacent punch holes (4th holes counting down from the top). (Figures 11-13)

Figure 11

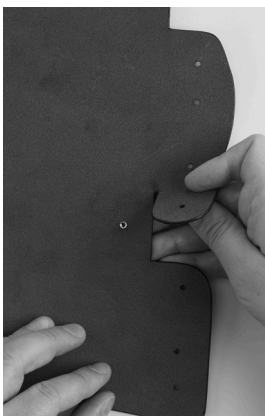


Figure 12

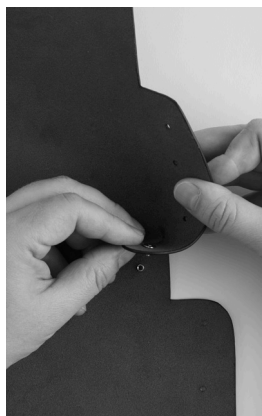
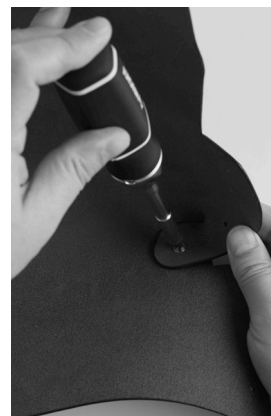


Figure 13



20. Fold the bottom up to meet the top. The bottom should overlap the outer edge. Goal is to align the last three punch holes on the right side of the bag. Insert a negative Chicago Screw (E) through the bottom two holes. It should be inserted through the exterior side of the bag. (Figure 14)

21. Secure the Chicago Screw (E) from the interior using the positive post and a screwdriver.

Figure 14



22. Align next two holes, but this time add Keeper (B). Insert a negative Chicago Screw (E) through Keeper (B) and the two layers of the Bag Body (A).

23. Insert the positive portion of the Chicago Screw (E) from the bag interior, securing three layers of leather. (Figure 15)

Figure 15



24. Align top two holes and insert the screw post from the interior. Attach one of the Chain Anchors (D) by securing with the screw post from the interior side of the bag using a small Phillip's screwdriver. (Figure 16)

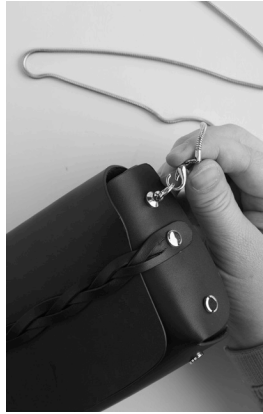
25. Repeat steps 19-24 on the following side.

26. Lastly attach the Snake Chain (C) to the two Chain Anchors (D). (Figure 17)

Figure 16



Figure 17



CONGRATULATIONS, YOU'VE MADE AN ADALYNN CROSSBODY!





FOR MORE PATTERNS, PROJECTS, AND TIPS,
VISIT [TANDYLEATHER.COM/BLOG](https://www.tandy.com/blog).

Distributed by Tandy Leather 1900 SE Loop 820, Fort Worth, TX 76140
Made in the USA with global components.
©2022 Tandy Leather. All rights reserved