



COLD BREW

ARTIST: HOPE SCHILLER

@LoveHopeHair

MODEL: WOAN

FORMULAS

STARTING CANVAS LEVEL: 2

Formula 1:

the color XG® HLPA (12/81) 1.5 oz. (45 g/ml) +
8PA (8/81) 0.5 oz. (15 g/ml) +
40 volume Paul Mitchell® Cream
Developer 2 oz. (60 g/ml)

Formula 2:

Dual-Purpose Lightener 1 scoop +
20 volume Paul Mitchell® Cream
Developer 1.75 oz. (50 g/ml)

Formula 3:

the color XG® 4PA (4/81) 4 oz. (120 g/ml) +
10 volume Paul Mitchell® Cream
Developer 4 oz. (120 g/ml)

Formula 4:

the color XG® 6PA (6/81) 1 oz. (30 g/ml) +
the color XG® 8PA (8/81) 1 oz. (30 g/ml) +
5 volume Paul Mitchell® Cream
Developer 2 oz. (60 g/ml)

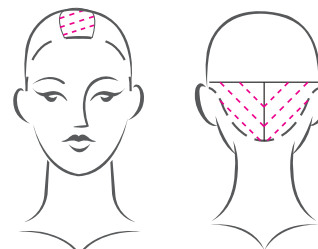
TECHNIQUE

1. Divide the hair into three segments: nape, parietal ridges and a cat-eye-shaped segment on top of the head.
2. Place diagonal weaves in the nape, alternating Formulas 1 and 2.
3. Move to the next segment and take vertical diagonal slices, alternating Formulas 1 and 2.
4. On the top segment, place diagonal back Teasy Highlights and alternate Formulas 1 and 2.
5. Apply Formula 3 to the base in between foils, dragging the color through to melt the depth into the ends. Process 25 minutes, rinse and shampoo with Color Protect® Post Color Shampoo and condition.
6. At the Wash House, apply Formula 4 all over the hair and process 5-10 minutes. Rinse, shampoo and condition.

DIAGRAMS

— slices
- - - - - weave/ teasy highlights

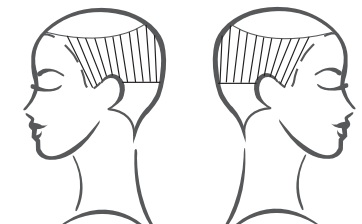
Diagonal Foil



Weave
Teasy Highlights



Diagonal Foil



VISIT PAULMITCHELLPRO.COM FOR FORMULATION
INSIGHTS AND HOW-TOS!