

A-Z OF PAINTING

ALMOST
ANY SURFACE



Name: _____

A-Z INDEX

Introduction	10
Pro Club Services.....	12
About the Guide.....	16

SUBSTRATES	
Aluminum Anodized	21
Aluminum Natural	22
Asphalt Road and Safety Markings	23
Brick Glazed.....	24
Brick Unglazed	25
Cast Iron.....	26
Concrete New Render 1 Month Old Min.	27
Concrete 6 Months+	28
Concrete Floors Fully Cured	29
Concrete Floors Power Floated.....	30
Concrete Masonry	31
Concrete Roofs	32
Concrete Board	34
Concrete Fly Ash	35
Coral Block	36
Drywall New.....	38
Fibreglass.....	39
Ferrous Metal Rusted	40
Galvanized Iron	41
Glass.....	42
Hardboard	43
Laminate Plastic.....	44
Particle Board Uncoated	45
Plaster of Paris.....	46
Plastic PVC	47
Stainless Steel	48
Stucco.....	49
Terracotta Clay Tile	50

Textured Finish Troweltex or Similar	51
Tiles Ceramic or Porcelain	52
Vinyl Flooring	53
Wood Painting New Bare Wood.....	54
Wood Previously Painted/ Varnished or Stained.....	55
Wood Applying Penetrating Stain.....	56
Wood Re-Varnishing Interior/ Exterior	57
Wood Re-Varnishing Interiors.....	58
Wrought Iron.....	59
Zinc.....	60

SOLVING PAINT PROBLEMS.....

Bittiness	63
Blistering	64
Blocking	66
Bubbles/Foaming	67
Cracking/Flaking	68
Cratering	69
Dirt Pick-Up	70
Efflorescence	71
Fading	72
Flashing.....	74
Graffiti	75
Knot Staining	77
Laitance	78
Lapping	79
Leaky Roofs	80
Mold/Mildew	84
Mud Cracking	86
Paint Incompatibility	87
Peeling	88
Peeling on Chalky Surface	89
Picture Framing.....	90
Poor Hiding.....	91

Roller Spattering	92
Rust Stains Nail Heads	93
Sagging	94
Shriveling/Wrinkling.....	95
Smoke Damage	96
Spalling	97
Spots/Cissing	98
Yellowing.....	99

PRODUCT GUIDE

Decorative Primers	101
Decorative Paints	104
Textured Finish	118
Wood Care.....	122
Rust Chem Primers & Coatings for Metal	127
Building Products	130
Other Products & Coatings.....	132

PRO TIPS

How To Remove Paint from Glass.....	136
How To Test Concrete for Moisture.....	136
Curing New Concrete	137
How To Avoid Ever Washing Out Another Paint Tray	137
Wet Vs Dry Sanding.....	138
How To Tell If Surface Is Oil Paint or Emulsion.....	138
Easy DIY Etching Solution	139
How To Know When Wood is Dry Enough To Paint	139
Use Paints With Long Acting Biocides.....	140
Check pH Level.....	140

QUICK REFERENCE

Which Roller?.....	142
Which Sandpaper?	144
Which Safety Colour?	145
Conversion Tables.....	146

CONTACT THE SALES TEAM

BARBADOS (246+)

Sales Manager John Marshall	836-6098
Sales Rep Mark Armstrong	826-6184
Sales Rep Colin Deane	226-3146
Sales Rep Suzanne Yarde	832-8228
HPC Sales Rep Michael Babb	266-0610
Wildey Pro Desk Gavin Wilson	822-8230
Wildey Pro Desk Jennifer Husbands	266-7709

DOMINICA (767+)

Sales Manager Roslyn Sorhaindo	612-4164
Sales Rep Marshall Maloone	616-7378

GUYANA (592+)

Sales Manager & HPC Garfield Manasseh	600-3420
Sales Rep Anthony Cole	654-2976
Sales Rep Kenrick John	625-3265

JAMAICA (876+)

Sales Manager & HPC Claude Manning	876-878-1390
Sales Rep Tareq Castello	876-368-9112
Sales Rep Andre Wilson	876-550-1629
HPC Sales Rep Jeffrey Patterson	876-286-3790

ST. LUCIA (758+)

Sales Manager & HPC Christopher Joseph...	724-6071
Sales Rep Shernil Regis	724-5591
Sales Rep Sheldon Nicholas	724-5597



The Harris Paints Group was selected as the best independent paint retailer in the Caribbean region and invited to join 12 other member paint companies from around the globe.

Nova Paint Club members are nominated by paint manufacturers who evaluate and recognize brand quality, cutting-edge technology, a national and international reputation for excellence and leadership in responsible care for people and the environment.

The network is one of the largest paint buying groups in the world. Members benefit from sharing knowledge, insights and resources to develop more exciting products and to provide even better services and support for customers.

The Nova family includes 51 worldwide manufacturing sites, 600+ skilled research & development staff and total turnover of 3 billion US dollars.





Belize 

 Jamaica

CARIBBEAN SEA

THE CHAMPIONS OF COLOUR

Available through 1500 distribution points,
from 85 Colourcentres in 14 countries

ATLANTIC
OCEAN



7 Reasons You Should Choose Us

Experience & Track Record

Harris Paints is a privately-owned Caribbean company that has specialized for 45 years in providing coatings for the Caribbean market. In Jamaica, our company is known as B-H paints a respected brand with a 55-year history.



Formulated for the Caribbean

Unlike international companies, 100% of our focus is on developing effective formulas engineered to stand up to our tropical climatic conditions including humidity, UV and sea blast.



Innovation & Product Testing

Committed to delivering top quality innovative products, our Best-by-Test seal marks products that have been independently tested by an international laboratory and proven to outperform competitors.





Green Standards

The Greenwise logo is awarded and displayed on products that have met or exceeded the regulatory standards set for air quality and environmental protection.



Widest Range of Solutions

We supply an extensive range of decorative coatings for virtually any surface as well as specialty paints and high performance industrial strength protective systems.



Anti-Corrosion Expertise

Get professional advice when it comes to corrosion prevention. NACE International is the world's premier authority on corrosion prevention and control. We have the largest NACE certified team in the Caribbean.



Quality Management

We operate according to strict international guidelines to ensure safety, reliability and quality. All plants in the Harris Group are certified ISO 9001:2015



PRO CLUB & SERVICES

JOIN NOW

Fill out the registration form on our website
or at any Colourcentre store.



IDEAL FOR

- ✓ Real Estate & Property Management
- ✓ Hotels
- ✓ Businesses and Commercial Organizations
- ✓ Institutions

MEMBERSHIP

The Pro Club is designed for professionals. There are no fees or obligations to register and operate a cash account. Credit facilities are available. Terms and conditions apply

PRO CLUB BENEFITS

ORDER SUPPORT

ADVANCE ORDER

Reduce time spent off-site by ordering 24 hours in advance



FREE DELIVERY

We provide delivery to central zones, within 24 hours (minimum order may apply). Ask about the zoning for your area.



PRO DISCOUNTS

Discounts on virtually every item, every time you shop!



CLUB SPECIALS

Exclusive special offers for Pro Members only!



PRO CLUB BENEFITS

TECHNICAL SUPPORT

EXPERIENCED SALES REPRESENTATIVES

To coordinate and facilitate your needs

SOLUTION RECOMMENDATIONS

Advice on preparation, application and coatings systems

SPECIFICATIONS AND ESTIMATES

Get a detailed and well defined work plan and costing

MAINTENANCE SCHEDULES

Assessment of maintenance requirements

TRAINING

On-site and off site guidance

PROJECT MANAGEMENT AND CONDITIONAL WARRANTIES

Assistance implementing and supervising projects

INFO & NEWS

Pro Tips & Business Builders for industry professionals in our newsletter



COLOUR SUPPORT

INSPIRATION

Over 59,000 colours, to create custom accent walls and colour schemes

ACCURACY

We use advanced colour tinting technology from industry leaders and keep colour references from every pail on qualifying orders to ensure quality and consistency

MATCHING

We analyse and match previously painted colours or selected fabrics at your site or in-store

COORDINATION

Our unique in-store colour system is designed to make finding and coordinating colours easy. Or use a fandeck or colour atlas for easy reference

VISUALS

See renovation plans come to life with images created by our online ColourWiz™ tool or ask about Digi-Paint, our professional digital imaging service*

DEMO

Try colours before you buy. Request a colour sample*

*Special conditions may apply.

ABOUT THIS GUIDE

From Aluminum to Zinc and everything in between, this handy guide is a life-saver with specifications from our Vice President of Technical and Head of Innovation (who has been designing formulas specially for the Caribbean environment for 30 years) identifying the exact coating system you'll need to guarantee success in coating virtually any surface.



WHAT IS COVERED IN THIS GUIDE?

This guide details coating systems to effectively colour, coat and protect virtually any surface encountered in standard construction, renovation and maintenance environments. It provides an outline of the preparation required for successful coating and identifies recommended coating systems for a variety of substrates as well as how to effectively solve surface challenges.



Note: While every effort is made to detail accurate and effective systems, specific project conditions are unknown and can be highly variable. This guide is therefore limited and outlines generally applicable principles. It is not a specification.



WHAT IS NOT INCLUDED?

While Harris/ B-H Paints do supply specialist High Performance Coatings (HPCs) these fall outside the scope of this guide. HPCs are a class of technically advanced protective coatings designed to give superior levels of impact, abrasion and corrosion protection designed for aggressive environments including high traffic areas and in commercial and industrial applications.

If you wish further information about high performance solutions or seamless resinous flooring, please Contact the Sales Manager or rep. at your location. See Contacts p.6

BEST PRACTICES FOR EVERY PROJECT

SAFETY

Take all safety precautions as necessary to protect your health and safety and carry out painting and prep activities in a well-ventilated area. Wear protective clothing such as goggles, respirators and gloves when dealing with strong chemicals and consult the Safety Data Sheet (SDS) for specific products.



PAINT PREP

Most so-called paint failures are due to improper preparation. Preparing the surface to be painted can account for 80% of the hours on any job and is essential for great, long lasting results. Preparation should start with a thorough inspection and assessment to determine the needs and suitability of the surface for coating. It also includes scraping, sanding and cleaning the surface, carrying out any repairs (filling and patching) and protecting areas not to be painted. Patience is one of the most important ingredients in painting and will pay off big.



BEST PRACTICES FOR EVERY PROJECT

MOISTURE

An effective paint job requires a dry, sound substrate. Be sure to test that concrete and wood are properly dry before painting. Use specialist primers and moisture barriers as appropriate.

READ THE LABEL

Read and follow manufacture instructions on the label for all products and consult the Technical Data Sheet (found on our website www.championsofcolour.com/product). Be sure to follow the drying times specified on the instructions between coats.



TEST FIRST

Do a test patch first whenever possible – this is the best way to determine the successful system and an accurate cost (how many coats needed to achieve desired effect) and the time the job will take.



SUBSTRATES





This surface has excellent adhesion (as long as it has not been coated with a sealer) as it is specially treated to produce a thick layer of oxidization making it stronger, stable (non-reactive to the air) and more porous. It is generally a tougher, more matte surface compared to natural aluminum.

PREP

Ensure the surface is clean and free from dirt, grease and other contaminants before priming.

PRIME

Prime all bare metal with 1 coat **Super Grip Premium Problem-Solving Primer** and allow to dry thoroughly.

PAINT

Use **Ultima Plus Acrylic Porch & Patio Enamel**, **Ultima Plus Satin** or **Gloss** (emulsion or oil) or **Pro Speed Cover Gloss Emulsion**.

Bare aluminum (mill finish) is generally a smooth surface which reacts to air to form a thin powdery layer of oxidization. It appears polished or unpolished and poses challenges for paint adhesion.

PREP

Ensure the surface is clean and free from dirt, grease etc. If white corrosive deposit is present, lightly sand to smooth and remove. Scrub with a non-metallic scouring pad or abrasive. Wipe entire surface with methylated spirits frequently changing the cloth to thoroughly remove all grease.

PRIME

Prime all bare metal with 1 coat **Super Grip Premium Problem-Solving Primer** and allow to dry thoroughly.

PAINT

Use **Ultima Plus Acrylic Porch & Patio Enamel, Ultima Plus Satin or Gloss** (emulsion or oil) or **Pro Speed Cover Gloss Emulsion**.

Contact us for industrial and specialist high performance coating systems – see Contacts p.6.





PREP

Asphalt must be fully cured. Ensure area is clean of all loose materials. Strongly recommend power washing and use of a water-based degreaser.

PRIME

No primer is required for road and safety markings.

PAINT

Apply 2 coats **Ultima Acrylic Traffic Paint** which is very fast drying and cleans up easily with water or **Harris Road Marking Paint** (solvent-based). Apply paint to a high-build of 15 mil wet.



PRIME

Roughen the surface of the brick by giving a light sanding. Thoroughly clean the area to be painted removing any loose debris and ensure it is free of mold or mildew. Remove any cleaning fluids and allow to dry.

PRIME

Apply 1-2 coats **Super Grip Premium Problem-Solving Primer**

PAINT

Top coat with any **Ultima Plus Emulsion** in the desired sheen and finish.



PREP

Thoroughly clean the area to be painted removing any loose debris and ensure it is free of mold or mildew. Power wash large areas or scour smaller areas with a brush. Remove any cleaning fluids and allow to dry.

PRIME

Apply 1-2 coats **Super Seal Premium Bonding Primer/Sealer** to bond the surface and provide a good foundation on which to paint.

PAINT

Top coat with any **Ultima Plus Emulsion** paint in the desired sheen and finish.

CAST IRON



PREP

Remove any rust from the surface using sandpaper reducing down to a fine grit. Clean by washing down with warm soapy water to remove any debris to leave a clean, dry surface.

PRIME

Apply **Rust Chem Universal Primer** to seal out moisture and protect against rusting.

PAINT

Top with at least 2 coats of a high-quality paint. Recommend **Ultima Plus Gloss Emulsion** or if an oil-based system is preferred, **Ultima Plus Gloss Oil Enamel** or **Rust Chem Super Gloss Enamel**.



New concrete surfaces should cure for 28 days minimum (dependent on weather conditions) to reduce the alkalinity and moisture content which can compromise effective painting.

PREP

Ensure surface is clean and dry and free of any loosely adhering dust particles.

PRIME

Apply an alkaline resistant sealer such as **Super Seal Premium Bonding Primer/ Sealer** to surfaces 1-6 months old which makes concrete less porous and more resistant to chemicals and moisture penetration. Proceed to top coat. If no sealer is used, apply 1-2 coats **Super Grip Premium Problem-Solving Primer** or for interiors **Ultima Concrete & Drywall Primer**.

PAINT

Apply 2 coats **Ultima Plus Emulsion** in the desired sheen and finish. *Note: Oil-based paints are not recommended.*



Good quality concrete 6 months old is sufficiently cured to accept most paint coatings including emulsions, oil-based enamels and epoxies if required.

PREP

Ensure surface is clean and dry and free of any loosely adhering dust particles.

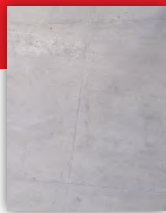
PRIME

If the surface is chalky or appears porous, it is recommended to use a concrete sealer such as **Super Seal Premium Bonding Primer/ Sealer**, before top coating.

If no sealer is used, apply 1-2 coats **Super Grip Premium Problem-Solving Primer** or for interiors **Ultima Concrete & Drywall Primer**.

PAINT

Apply 2 coats **Ultima Plus Emulsion** in the desired sheen and finish.



This refers to unsealed concrete floors that are fully cured (contain less alkalinity and moisture) or older previously painted floors.

PREP

Ensure that the floor is sound and dry. Patch and sand as needed, cleaning away all waste materials. Thoroughly clean floor with a degreaser, rinse and allow to dry for 2 days.

PRIME

Apply 1 coat **Super Seal Premium Bonding Primer/ Sealer** or use a diluted coat of **Ultima Plus Acrylic Porch & Patio Enamel** and allow to dry thoroughly.

PAINT

Apply 2 coats **Ultima Plus Acrylic Porch & Patio Enamel** allowing to fully dry between coats.



Consider applying 1-2 coats **Aqua Overglaze** (will enhance sheen) to give longer lasting durability to paint work.



This is an extremely hard surface which resists paint from achieving proper adhesion without special preparation.

PREP

Profile the surface to achieve sufficient 'tooth' that the paint can hold on to. This can be achieved by many methods including grinding, shot blasting or etching the floor with acid (see Pro Tips #7 p.139). The floor should be cleaned of debris, washed if using an etching solution and allowed to fully

PRIME

Apply 1 coat **Super Seal Premium Bonding Primer/ Sealer** or use diluted coat of **Ultima Plus Acrylic Porch & Patio Enamel** and allow to dry thoroughly.

PAINT

Apply 2 coats **Ultima Plus Acrylic Porch & Patio Enamel** allowing to fully dry between coats.



PREP

Ensure surface is clean of any loose debris. Previously painted walls may need to be sanded and/or power washed to remove loose or flaking paint. Ensure new concrete is fully cured.

PRIME

- ✓ **Older Uncoated Surfaces** - can be very porous. Apply 1-2 coats **Super Seal Premium Bonding Primer/ Sealer**.
- ✓ **New Interior** - apply 1-2 coats **Ultima Concrete & Drywall Primer**
- ✓ **Challenging Exterior Environments** - apply 1-2 coats **Super Grip Premium Problem-Solving Primer** or if exposed to ingress of water, apply 1-2 coats **Super Block Waterproofing Masonry Paint**.

PAINT

Use water-based top coat: **Ultima Plus Acrylic Porch & Patio Enamel**, **Ultima Plus Satin** or **Gloss Emulsion** or **Pro Speed Cover Gloss Emulsion**.



Treat concrete roofs to protect against leaking.

PREP

Clean the roof thoroughly to remove any dust or debris. Remove fungus with an appropriate solution. If new concrete is 'glossy' smooth or unhydrated cement powder is still on the surface use an etching solution.[see Pro Tip #7 p. 139] refer to tip and mix in a plastic container. Rinse with clean water and allow to dry.

PRIME

No primer coat is required.

PAINT

Important! Check the weather forecast to ensure you have good dry conditions and allow enough time for coatings to dry.

continued

PAINT

Use **Ultima Roof Coating** allowing for 1 gal per 50 sq. ft. of roof area. This is not a normal roof paint but is a liquid plastic that must be applied in layers to the correct thickness – about 1mm total wet thickness or about 2-3 coats.

First Coat: Thin a suitable quantity for the first layer with about 25% water and apply with a brush, broom or roller and allow to dry (about 1 hour).

Second Coat: Apply normal strength in a horizontal direction to the water flow and allow to dry (4-6 hours/ or leave overnight).

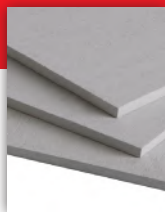
Final Coat: Apply normal strength in the direction of the water flow and allow to fully dry to achieve leak proof properties.



Don't be tempted to apply in 1 thick coat which will not be as resilient and may not dry properly so will likely be removed by rain or heavy dew.

CONCRETE BOARD

A concrete board is a combination of cement and reinforcing fibers formed into 4' x 8' sheets.



PREP

Ensure surface is clean of any loose debris and joints are filled and taped. If previously painted sand and fill as needed.

PRIME

- ✓ **Older Uncoated Surfaces** - can be very porous. Apply 1-2 coats **Super Seal Premium Bonding Primer/ Sealer**.
- ✓ **New Interior** - apply 1-2 coats **Ultima Concrete & Drywall Primer**
- ✓ **Challenging Exterior Environments** - apply 1-2 coats **Super Grip Premium Problem-Solving Primer** or if exposed to ingress of water, apply 1-2 coats **Super Block Waterproofing Masonry Paint**.

PAINT

Top coat with minimum 2 coats **Ultima Plus Emulsion** in the desired sheen and finish.

To repair cracks and holes in cement board, fill with thin-set mortar, allow to dry and sand smooth.



CONCRETE FLY ASH



Fly ash is a by-product of coal-fired and electric generating plants and when used as a component in concrete increases its strength and durability as well as having environmental benefits.

PREP

Prepare the surface as for any other concrete surface ensuring it is clean smooth and free of loose materials.

PRIME

The coal derivative in the concrete imparts an oily characteristic and therefore 1-2 coats of a solvent-based primer such as **Super Seal Premium Bonding Primer/ Sealer** should be used.

PAINT

When fully dry, proceed to top coat with **Ultima Plus Emulsion** in the desired sheen and finish.

CORAL BLOCK



Quarried coral stone (limestone) is porous and less dense than concrete, ideal for keeping buildings cool. Sealing, both interior and exterior, will reduce dusting and retard the growth of mildew to keep the surface fresher.

PREP

Clean walls, power washing where possible and treat as necessary to remove any fungus that tends to build with age.

PAINT

Seal surface with **Aqua Overglaze** which is milky white but will dry clear. At full coverage it has a low sheen. Spray application is recommended as it gives better penetration into the coral surface or apply liberally with a soft brush.

First Coat: Dilute a suitable quantity 50: 50 with water and apply to walls immediately after wetting.

Second Coat: Reduce the dilution to about 20% water and allow to dry. For full coverage repeat once more.



Aqua Overglaze can also be used to protect decorative artwork making colours last longer and appear richer and it will be easier to clean.

ALSO GYPSUM BOARD OR SHEETROCK



PREP

After applying joint compound and drywall tape, allow surface to dry. Carefully sand the surface using a light grade sandpaper to smooth any rough spots. It is very important to thoroughly remove the fine dust produced by using vacuum, brush or by rubbing with a micro-fibre cloth.

PRIME

Drywall is susceptible to 'flashing' especially along joints and where fillers are used leading to areas of uneven absorbency. Prime well to create a uniform surface. Use 2 coats **Ultima Concrete & Dryall Primer** or seal with a full coat of **Aqua Overglaze**. Top coat as desired.

PAINT

Recommend using flat or low sheen water-based paint which will make walls appear even smoother such as **Ultima Plus Interior Flat Emulsion** or **Pro Speed Cover Flat or Eggshell Emulsion**.

Don't be tempted to aggressively sand out any small impressions. Fill smooth with the prime coat.





PREP

All surfaces must be clean. Remove mold or mildew and degrease by wiping with denatured alcohol (methylated spirit). Use a fine grade sandpaper to remove shine and produce a super smooth surface. Wipe clean again.

PRIME

For the smoothest finish apply 1-2 coats **Super Grip Premium Problem-Solving Primer** by spraying. Allow each coat to dry and sand lightly with a superfine grade paper, then wipe clean between coats.

PAINT

For hard-wearing projects **Ultima Plus Acrylic Porch & Patio Enamel, Ultima Plus Satin** or **Gloss** (emulsion or oil) paint finish is recommended and spray painting (as for the primer) will provide the smoothest results.

Boats and Marine: Contact us for specialist high performance coating systems - see Contacts p.6.



Ferrous metal is prone to rusting in moist, tropical conditions and in salty, seaside environments. Left untreated the metal will weaken and deteriorate.

PREP

Remove all loose and flaking rust with a wire brush. Sand to remove remaining encrusted rust and to smooth.

PRIME

Prime with 1-2 coats rust-inhibiting, high-adhesion **Rust Chem Universal Primer** or **Rust Chem Anchorlite Heavy Duty Primer** and allow to dry thoroughly.

PAINT

Water-based system: Use **Ultima Plus Acrylic Porch & Patio Enamel**, **Ultima Plus Satin** or **Gloss Emulsion** or **Pro Speed Cover Gloss Emulsion**.

Solvent-based system: Use **Rust Chem Super Gloss Enamel** or **Ultima Plus Gloss Oil Enamel**.

Contact us for industrial and specialist high performance coating systems – see Contacts p.6.



A thin layer of zinc protects the underlying metal from rusting. It is challenging to paint due to its smooth surface and sometimes a greasy residue.

PREP

IMPORTANT! Thoroughly clean and degrease the surface. An ammonia solution works well. Rinse and allow to dry fully.

PRIME

Use **Super Grip Premium Problem-Solving Primer**, a high quality, high-adhesion acrylic primer. (If surface is damaged, exposing raw metal treat by spot priming with **Rust Chem Universal Primer** to inhibit rust before proceeding with a full coat of **Super Grip**.)

Note: Regular alkyds or oil-based paints are not recommended as they can react with the zinc and there is a higher risk of delamination.

PAINT

Choose a high quality acrylic top coat in desired sheen and finish. **Ultima Plus Acrylic Porch & Patio Enamel**, **Ultima Plus Gloss Emulsion** or **Pro Speed Cover Gloss Emulsion** are recommended for inside and out.



Clean galvanized roofing periodically especially if under overhanging trees to achieve longer lasting protection.



Despite its smooth non-porous surface, glass can be painted but it is not recommended for areas subject to constant moisture, heavy abrasion and wear and tear.

PREP

Clean the surface with warm soapy water, rinse and dry. Wipe with rubbing alcohol or white vinegar to remove all soap film and grime. Rub with wire wool to provide some 'tooth'.

PRIME

For front painted projects, apply 1-2 coats of a high-adhesion primer such as **Super Grip Premium Problem-Solving Primer**.

PAINT

Top coat with an acrylic paint such as **Ultima Plus Emulsion** in the desired sheen and finish.

Note: For small handicraft projects check glass and ceramic products available from craft supply stores.

HARDBOARD



ALSO MASONITE OR PEG BOARD

Generally smooth and shiny on one side and dull and slightly textured on the other.

PREP

Sand to dull the shiny side of the surface. Thoroughly remove any residual dust.

PRIME

Apply 1-2 coats **Super Grip Premium Problem-Solving Primer**. If painting the textured side (very porous) seal with **Aqua Overglaze** before proceeding to top coat.

PAINT

Top coat with 2 coats **Ultima Plus Emulsion** in the desired sheen and finish. For a smooth finish give a light sanding between coats, remove dust and apply second coat.

Optional: Apply clear coat of : **WoodCare Gloss Polyurethane** varnish.



ALSO FORMICA, LAMINATED MDF

A plastic resinous laminate often used for counter tops and cupboards.

PREP

Clean well by scouring to remove any grease or dirt. Give a light sanding to abrade the surface. Wipe clean and allow to dry.

PRIME

Apply 2 coats **Super Grip Premium Problem-Solving Primer** and allow to dry between coats.

PAINT

Apply 2 coats **Ultima Plus Acrylic Porch & Patio Enamel**, **Ultima Plus Satin** or **Gloss** (emulsion or oil) or **Pro Speed Cover Gloss Emulsion**.

Optional: Apply clear coat **WoodCare Gloss Polyurethane** and allow 2 days to fully cure before use. (note: dries to translucent amber).



PARTICLE BOARD UNCOATED

ALSO CHIPBOARD, FIBREBOARD OR
MDF (UNLAMINATED)

PREP

Sand to help paint adhere to the surface. Some boards are coated or very shiny and might require a heavier sanding. Remove any residual dust.

PRIME

Apply 1-2 coats **Super Grip Premium Problem-Solving Primer**

PAINT

Top coat with 2 coats **Ultima Plus Emulsion** paint in the desired sheen and finish.



For a smooth finish give a light sanding between coats, remove dust and apply second coat.

PLASTER OF PARIS



A white powder that is mixed with water into a gypsum paste and forms a smooth, hard surface when dried. Used for wall surfacing.

PREP

Make sure the surface of the plaster is clean and fully dry.

PRIME

New unpainted plaster is very porous so it is important to seal by applying 1-2 coats **Super Seal Premium Bonding Primer/ Sealer**. Allow to dry between coats (6 hours). Clean tools with **Ultima Puritene Thinner**. Or alternatively apply 1-2 coats of diluted **Aqua Overglaze**.

PAINT

Top coat with minimum 2 coats **Ultima Plus Emulsion** paint in the desired sheen and finish.

PLASTIC PVC



Versatile material widely used for pipes, furniture, trim and many other architectural features.

PREP

Clean PVC with an ammonia-based window cleaner to remove dirt or grease. Lightly abrade surface by sanding with a fine grade sandpaper to remove the glossy surface.

PRIME

Prime with 1 full coat **Super Grip Premium Problem-Solving Primer**.

PAINT

Top coat with minimum 2 coats **Ultima Plus Emulsion** in the desired sheen and finish. Alternatively spray **Rust-Oleum Paint for Plastic**, applying thin coats and allowing to dry between coats. Repeat until fully covered. Allow to fully cure for up to 7 days for longest lasting protection.

STAINLESS STEEL



This refers to a family of steel alloys characterized by a thin, invisible chromium enriched film which resists corrosion.

PREP

If the surface is polished smooth, it'll be necessary to sand to roughen and provide some 'tooth' to aid adhesion of coating. After sanding, remove all debris and clean surface thoroughly with a degreaser or methylated spirits, being sure to remove all cleaning agents.

PRIME

Prime all bare metal with 1 coat **Super Grip Premium Problem-Solving Primer** and allow to dry thoroughly.

PAINT

Use **Ultima Plus Acrylic Porch & Patio Enamel, Satin or Gloss**(emulsion or oil) or **Pro Speed Cover Gloss Emulsion**.

Contact us for industrial and specialist high performance coating systems – see Contacts p.6.



ALSO CEMENT RENDER

A plaster-like finish made with aggregate that is very hard when dried and is used as a decorative and sculptural coating for walls and ceilings.

PREP

Ensure area to be painted is clean and free of dirt, debris, mold or other contaminants that could affect the finished paint job.

PRIME

If surface has not been previously painted, it will need to be primed once it is fully cured. Apply 1 full coat of **Super Grip Premium Problem-Solving Primer** or 1-2 coats **Ultima Concrete & Drywall Primer**. If the surface is old and has been exposed to the elements, prime with **Super Seal Premium Bonding Primer/ Sealer**.

PAINT

Use best quality water-based finishes for exteriors to withstand the elements and provide longest protection. Top coat with minimum 2 coats **Ultima Plus Emulsion** in the desired sheen and finish.



A type of ceramic made from red and brown clays. Can be glazed or unglazed.

PREP

Thoroughly clean the surface to remove any dirt, mildew or other contaminants. Rinse and allow to dry. For glazed tiles, deglaze or scuff the shiny surface by sanding.

PRIME

Apply 1-2 coats **Super Grip Premium Problem-Solving Primer** or use a diluted coat of **Ultima Plus Acrylic Porch & Patio Enamel** and allow to dry thoroughly.

PAINT

Apply 2 coats **Ultima Plus Acrylic Porch & Patio Enamel** paint. For longer lasting protection, seal with 1-2 coats **Aqua Overglaze** (will enhance sheen) to give longer lasting durability to paint work.

TEXTURED FINISH

TROWELTEX OR SIMILAR



This coral-stone like texture is applied inside and out in a natural coral tone or in a full range of colours.

PREP

To repaint a fully dry textured surface, ensure area is clean and free of dirt, debris, mold or other contaminants.

PRIME

A primer is not essential unless there is a dramatic change of colour. In this case, apply 1-2 coats **Ultima Concrete & Drywall Primer**. (Recommend to tint in shade of desired colour. This can reduce the number of top coats required.)

PAINT

If painting or a change of colour is required, top coat with minimum 2 coats **Ultima Plus** or **Pro Speed Cover Emulsion** in the desired sheen and finish.

*For longest lasting exterior colour consider sealing with 1-2 coats **Aqua Overglaze** which also helps to resist the growth of mildew.*



Outdated tiles can be repainted to give a new lease on life but it is not recommended for areas subject to constant moisture such as within a shower or bath unit or for very heavy traffic areas.

PREP

Thoroughly clean tile with a degreaser/ mold remover as necessary. Be sure to get the grout very clean. Sand the surface well with a fine grit sandpaper to remove the glaze and provide 'tooth' and wipe clean. If repairs are necessary be sure to allow caulk and fillers to dry thoroughly.

PRIME

Prime with 1 full coat **Super Grip Premium Problem-Solving Primer**.

PAINT

Top coat with minimum 2 coats **Ultima Plus Emulsion** paint in the desired sheen and finish. Alternatively spray **Rust-Oleum Paint for Plastic**, applying thin coats and allowing to dry between coats. Repeat until fully covered.

Allow to fully cure for up to 7 days for the longest lasting protection.





ALSO LINOLEUM

Breathing new life into tired looking vinyl flooring can transform a room.

PREP

Clean floors with soap and water. Then scrub with trisodium phosphate (TSP) cleaner or another degreaser. Sand the surface to remove the shiny finish.

PRIME

Apply 1 coat high-adhesion **Super Grip Premium Problem-Solving Primer** or use a diluted coat (1 part water to 10 parts paint) of **Ultima Plus Acrylic Porch & Patio Enamel** and allow to dry thoroughly.

PAINT

Apply 2 coats **Ultima Plus Acrylic Porch & Patio Enamel** allowing to fully dry between coats.

WOOD

PAINTING NEW BARE WOOD



Smooth planed wood is one of the most popular construction materials but must be properly dry before use.

PREP

Sand the surface smooth. If a sappy, soft wood such as Pine is used, first remove sap from wood knots by scraping and wiping with methylated spirits or **Ultima Puritene Thinner**.

PRIME

Spot prime wood knots with 2 coats shellac-based primer. Then apply 1-2 full coats of **Ultima Wood Primer** (recommend 2 coats for soft woods which tend to be very absorbent).

PAINT

Interior: Apply 2 coats of **Ultima Plus Emulsion** in the desired sheen and finish or **Pro Speed Cover Gloss Emulsion** (ideal for trim jobs).

Exterior: Apply 2 coats of **Ultima Plus Gloss** or **Satin Enamel**. For a water-based system, use 2 coats **Ultima Plus Satin Emulsion** or **Acrylic Porch & Patio Enamel**.

Note: If wood has been weathered give a thorough sanding to remove the outermost layer which will be exceedingly porous.



Follow these steps to help you re-finish wood that was previously coated.

PREP

Scrape off loose flakes, sand the entire area (to smoothen and add grip to oil paint) and thoroughly clean. If previously stained, do a sample area and allow to dry several days to ensure there is no bleed through.

PRIME & PAINT

If area is in good condition and well coated - proceed to topcoat.

Water-Based Acrylic System:

- Apply full coat of high-adhesion **Super Grip Premium Problem-Solving Primer** which works well over surfaces previously painted with either emulsion or oil.
- Apply 2 coats of **Ultima Plus Gloss or Satin Emulsion**

Oil-Based Alkyd System:

- Apply full coat of **Ultima Wood Primer**
- Top coat with 2 coats of **Ultima Plus Gloss or Satin Enamel**.



How to tell if a surface is oil paint or emulsion [See Pro Tip #6, p.138]

WOOD

APPLYING PENETRATING STAIN



Stain is an ideal finish that enhances the natural beauty of wood providing a low-build coating that won't peel or flake! Suitable for interiors or exteriors.

PREP

Wood must be unsealed, clean and dry. If previously painted or varnished, strip to bare wood and clean thoroughly. Sand to a smooth finish and remove all debris, wiping clean with a damp cloth.

PAINT

- Stir **WoodCare High Performance Penetrating Stain** well and regularly throughout application (do not shake).
- Apply a full coat working the product into the wood and wiping away excess within 15-20 mins of application.
- Apply coats until you achieve desired colour, allowing 30 minutes drying time between each application.
- After final coat, allow 24 hours drying for vertical surfaces and 48 hours for floors.



WoodCare High Performance Penetrating Stain is an oil-based product that requires **Ultima Puritene Thinner** for clean up. It is available in 8 semi-transparent, pre-tinted colours with a matte finish.



Indoor cabinetry and floors requires a fine, hard finish. Here's how to refinish plain or previously varnished hard-wearing wood-work.

PREP

Thoroughly clean and degrease surface and allow to dry. Sand smooth with a fine grit sandpaper, removing the debris, wiping clean and allowing to dry.

SEAL

Seal by applying 1-2 coats **WoodCare Nitrocellulose Sanding Sealer**. Give another light sanding and clean ready for the top coat.

PAINT

Apply **WoodCare Gloss Polyurethane** or **WoodCare High Performance Poly-Stain (Satin or Gloss)** in desired colour. For best durability recommend applying 4 or more coats. If using a colour, recommend applying a protective clear coat (1-2 coats) of **WoodCare Gloss Polyurethane** or **WoodCare Duraglaze Quick Drying Stain**.





Varnishes and some stains provide a hard, protective coat for wood projects.

PREP

Scrape off loose flakes, sand the entire area (to smoothen and add grip to oil paint) and thoroughly clean. If previously stained, do a sample area and allow to dry several days to ensure there is no bleed through.

PAINT

Water-Based Acrylic System: Apply 2-3 coats **WoodCare Duraglaze Quick Drying Stain** as a clear coat or in a colour of your choice.

Oil-Based Polyurethane System: Apply **WoodCare High Performance Poly-Stain** in clear (2 coats) or apply extra coats to achieve your choice of colour and finish.

Interiors: If desired, apply a clear protective top coat of **WoodCare Duraglaze Quick Drying Stain or Maritime Spar Varnish** over coloured stains to further enhance sheen.

WROUGHT IRON



Widely used for security bars, grills and decorative work, this material is prevalent in many Caribbean homes.

PREP

Remove any loose flakes of paint and rust spots by sanding and/or scrubbing with a wire brush or pad. Clean thoroughly with a 50:50 water:vinegar or mild detergent solution and allow to dry.

PRIME

For bare or only partially coated wrought iron, apply **Rust Chem Universal Primer** or **Rust Chem Anchorlite Heavy Duty Primer** which will inhibit rusting.

PAINT

Recommend to top coat with **Ultima Plus Emulsion** in desired sheen and finish. **Other top coat options include:**

- Over **Rust Chem Anchorlite Heavy Duty Primer** – use **Pro Speed Cover Gloss Emulsion** or **Rust Chem Super Gloss Enamel** (oil-based)
- Over **Rust Chem Universal Primer** use **Ultima Plus Satin or Gloss Enamel** or **Rust Chem Quick Dry Enamel** (spray applied)

Contact us for industrial and specialist high performance coating systems –see Contacts p.6.

ZINC

This material is mostly found on the surface of galvanized metal as a rust protection barrier. It is challenging to paint due to its smooth surface and sometimes a greasy residue.



PREP

The most important step is to thoroughly clean and degrease the surface. An ammonia solution works well. Rinse and allow to dry fully.

PRIME

It is best to use a high quality, high-adhesion acrylic primer such as **Super Grip Premium Problem-Solving Primer**. If the galvanized surface is damaged, exposing raw metal and risk of rust spots, treat these first, by spot priming with a rust inhibiting, high-adhesion primer such as **Rust Chem Universal Primer** before proceeding with the **Super Grip** full primer coat.

PAINT

Choose a high quality acrylic top coat in desired sheen and finish. **Ultima Plus Acrylic Porch and Patio Enamel**, **Ultima Plus Gloss Emulsion** or **Pro Speed Cover Gloss** are recommended for interior and exterior environments.



RUST CHEM

THE METAL COATINGS THAT YOU CAN RELY ON.

PREMIUM QUALITY

IDEAL FOR HOUSEHOLD & INDUSTRIAL USE

EXCELLENT DURABILITY



www.championsofcolour.com

SOLVING PAINT PROBLEMS





Uneven or grainy texture in the paint surface.

POSSIBLE CAUSE

- Dust and dirt in the air settling on the paint surface.
- Use of dirty paint brush.
- Surface skin being stirred into the paint.

SOLUTION

- ✓ Allow paint to dry and harden then remove imperfections using a fine grade wet and dry sandpaper with warm soapy water (or solvent as suitable) to refine the surface. Rinse thoroughly and let dry.
- ✓ Use only clean, good quality paint brushes and avoid stirring skin into the paint.
- ✓ If using paint stored for a long period, stir thoroughly with a mechanical mixer and consider straining.

BLISTERING



Bubbles resulting from loss of adhesion and lifting of the paint film.

POSSIBLE CAUSE

- Painting a warm surface in direct sunlight.
- Exposure to high humidity or moisture shortly after painting.
- Moisture seeping in through an exterior wall.
- Surface moisture.
- Applying oil-based or alkyd paint over a damp surface.

In the construction stage, additives such as **Harris Mortar Bond SBR** promote excellent water resistance in new concrete surfaces.



HARRIS MORTAR BOND SBR

Waterproofing and bonding admixture for use with cementitious mixes and as a reliable water resistant bonding agent for concrete screeds and mortars.

SOLUTION

- ✓ Identify and remove causes of moisture and allow surface to dry. Consider installing a waterproof membrane such as **Harris Damp Seal DPM** if water seeping in from exterior ground.
- ✓ Remove blisters and loose material by scraping and sanding to prepare surface for repainting.
- ✓ If damage is extensive, reapply a primer coat and allow to dry. On concrete, if moisture still prevalent use a waterproofing primer such as **Super Block Waterproofing Masonry Paint**.
- ✓ Top coat considering the existing system.

Water-based system:

Recommend **Ultima Plus** exterior formulations in the desired sheen which contain long-lasting agents to resist the growth of mildew.

Oil-based system:

Use **Ultima Plus Satin** or **Gloss Enamel**.

**Harris
Damp Seal DPM**



**Super Block Waterproofing
Masonry Paint**



BLOCKING



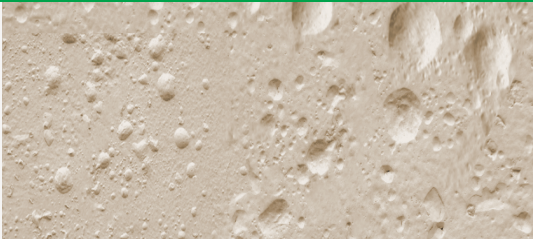
The term used when two freshly painted surfaces (such as windows and doors) stick together, particularly prevalent with oil paints that have long dry and recoat times.

POSSIBLE CAUSE

- Not allowing sufficient dry/ cure time before surfaces come into contact.
- Applying coats too thickly or too soon after each other (impedes proper drying).
- Warm, humid conditions can prolong drying/ curing conditions.

SOLUTION

- ✓ To repair: Scrape off loose paint. Sand clean and recoat.
- ✓ Carefully observe recommended dry and cure times.
- ✓ To prevent: Use quality, quick-drying water-based acrylic paint such as **Ultima Plus Emulsion** or **Pro Speed Cover Gloss Emulsion** formulated for excellent block resistance. It is touch dry in 10 mins., recoats in 1 hour and cures in 4 hours for faster job turnaround.



Sponge rollers can cause air to be injected into the paint film creating air bubbles that burst and dry to an uneven surface.

POSSIBLE CAUSE

- Roller sleeve is wet.
- The wrong type of roller was used.

SOLUTION

- ✓ Thoroughly clean surface.
- ✓ Remove imperfections by using a fine grade wet and dry sandpaper with warm soapy water (or solvent as suitable) to refine the surface.
- ✓ Rinse, dry and repaint.
- ✓ To prevent. Select a good quality roller suitable for the surface and paint system selected.

Check our roller guide on p.142



CRACKING/FLAKING



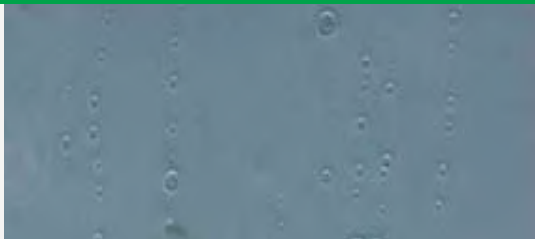
The splitting of a dry paint film through at least one coat. Can first appear as hairline cracks which later loosen and flake off.

POSSIBLE CAUSE

- Inadequate adhesion and flexibility.
- Over thinning paint.
- Poor surface preparation (bare timber).
- Hot or windy conditions cause paint to dry too fast.
- Oils can become brittle over time on exterior wooden surfaces and crack.

SOLUTION

- ✓ Remove paint by scraping, sanding and/or use of a heat gun.
- ✓ If needed apply a primer coat. Recommend: **Super Grip Premium Problem-Solving Primer**.
- ✓ Recoat considering the existing system. Recommend **Ultima Plus Emulsion** water-based acrylic in the desired sheen. If oil-based system is preferred, **Ultima Plus Satin or Gloss Enamel**.



Small round defects or 'pinholes' in the surface, most prevalent with emulsions.

POSSIBLE CAUSE

- Foaming – when bubbles burst they leave small voids.
- Painting directly on to a very porous surface or on to a surface painted with a poor quality 'chalky' primer, draws moisture out of the top coat too quickly.
- Paint contamination

SOLUTION

- ✓ To prevent the problem be sure to prime well with a suitable, good quality primer such as **Ultima Wood Primer** or **Ultima Concrete & Drywall Primer** applying with suitable applicators.
- ✓ If concrete is very porous or chalky use **Super Seal Premium Bonding Primer/Sealer** or **Aqua Overglaze** before applying top coat.
- ✓ Remove coating completely if surface is contaminated or to repair, give a light sanding if needed before reapplying the top coat.

DIRT PICK-UP



Accumulation of dirt, dust particles or other debris on the paint film.

POSSIBLE CAUSE

- Use of a low-quality paint or unsuitable product.
- Soil splashing onto the substrate.
- Air pollution, car exhaust and flying dust collecting on house body and horizontal trim.

SOLUTION

While dirt pick-up cannot be eliminated completely due to environmental factors, these steps will improve serviceability.

- ✓ Clean surface thoroughly with a scrub brush & detergent solution or power wash. Rinse and allow to dry.
- ✓ Repaint with a durable and washable top coat, taking into consideration the existing system. Recommend **Ultima Plus Acrylic Porch & Patio Enamel, Satin or Gloss** paints for hardwearing exteriors.



Commonly occurs on concrete surfaces (also brick, plaster and natural stone) where salts migrate to the surface by moisture action and leave white marks or discolouration.

POSSIBLE CAUSE

- Moisture ingress either from within or outside the surface.
- Concrete that is not fully cured (should be less than 10% moisture before painting).

SOLUTION

- ✓ Identify and remove the likely sources of moisture that can cause paint to bubble and peel.
- ✓ Clean off the salts by washing or wire brushing & allow surface to fully dry. Once moisture has been contained, apply **Super Seal Premium Bonding Primer/ Sealer** to the surface before painting.
- ✓ If water is entering the wall from exterior - apply a damp proof membrane such as **Harris Damp Seal DPM** or a waterproofing primer such as **Super Block Waterproofing Masonry Paint**.

FADING



Some loss of pigment naturally occurs in a painted surface over time due to exposure to light, a process known as photodegradation.

POSSIBLE CAUSE

- Pigments are made up of chemical bonds which are broken down by ultraviolet light, increasing over time and with direct exposure. Specific hues and environmental conditions may increase this effect.
- Synthetic pigments, characterized by very bright, intense colours not often found in natural earths, tend to be more susceptible.
- Paints that use low quality resins and pigments offer low resistance to UV rays.

Spot repairs and colour matching exposed paint surfaces is not recommended as the difference between damaged and new pigment will be detectable. Older surfaces should be repainted and edge-to-edge repairs carried out for surfaces with minimal age or light exposure.



SOLUTION

Use a high quality paint that is specially formulated for high resistance to UV rays and Caribbean conditions such as **Ultima Plus Emulsions** formulated with **ColourLast Technology™** and utilizes:

- 100% pure acrylic, UV-resistant resins to bind pigments
- opaque polymers to help reflect UV rays
- colourants that have high pigment concentration
- tint formulas using inorganic colourants where possible
- special High Performance Organic Red and Yellow with up to 5X more fade resistance than regular pigment

Carefully consider selection particularly for exterior environments since some colours are inherently more fade resistant than others.

BRIGHTER COLOURS WITH STRONGER FADE RESISTANCE



Ultima Plus is formulated with UV absorbing extender pigments and tinted with high performance colourants, **Ultima Plus** will look brighter and last longer than conventional paints, so you don't have to repaint as often.

When ordering tinted paint be sure to indicate if it is for an interior or exterior application!

FLASHING



Repaired patches show through the painted top coat. Occurs most often on concrete and drywall surfaces.

POSSIBLE CAUSE

The filler or patching compound has a different porosity to the surrounding wall and if improperly primed and painted, it will be easily seen.

SOLUTION

- ✓ After patching allow compounds and fillers to dry fully.
- ✓ Spot prime patched area with **Super Grip Premium Problem-Solving Primer** and allow to dry.
- ✓ Apply full coat of **Super Grip Premium Problem-Solving Primer** or **Ultima Concrete & Drywall Primer**.
- ✓ Top coat with suitable, good quality finish. Recommend water-based acrylic paint, **Ultima Plus Emulsion**.

TO REPAIR

- ✓ Lightly sand entire surface if gloss paint was used.
- ✓ Apply a full coat of **Aqua Overglaze** to seal flashed areas and provide an even surface.
- ✓ Reapply top coat.



Unwanted scribbles on walls

POSSIBLE CAUSE

- Spray paint
- Markers
- Kids crayons

SOLUTION

REMOVAL: Attempts to remove graffiti on smooth surfaces will more than likely leave marks and lead to repainting but is worth a try and can help to reduce the risk of show-through. Rough surfaces are more challenging, and repainting is suggested.

- ✓ Use paint thinner to remove spray paint (or mineral spirits, WD40 or acetone). Additionally, exterior surfaces can be pressure washed.
- ✓ To remove marker (Sharpie) damp a cloth with rubbing alcohol and wipe to lift off. (Or alcohol-based products like hair spray also work!)
- ✓ An ammonia-based cleaner like Windex can be used to remove most crayons.
- ✓ Be sure to thoroughly remove all cleaning agents after use.

continued

SOLUTION

Repainting:

- ✓ Lightly abrade marks and paint with steel wool or sandpaper.
- ✓ Depending on intensity, apply 2-3 coats of a **Super Grip Premium Problem-Solving Primer** which is formulated for high-adhesion and to seal out stains.
- ✓ Finish with an emulsion or oil-based top coat of your choice. **Ultima Plus** premium paints are recommended.

SUPER GRIP PREMIUM PROBLEM-SOLVING PRIMER





Sap 'bleeds' from wood substrate and stains paint work.

POSSIBLE CAUSE

- Oil and resin 'bleed' is particularly prevalent in pine and softwoods.

SOLUTION

Best to prevent by spot priming knots with 2 coats of a suitable shellac-based, stain-blocking primer such as **Zinsser B.I.N Primer**. Apply full coat **Ultima Wood Primer**. Top coat with good quality water-based acrylic paint such as **Ultima Plus Emulsion** or **Pro Speed Cover Eggshell** or **Gloss Emulsion**.

TO REPAIR:

- ✓ Remove surface residue with methylated spirit or **Ultima Puritene Thinner**.
- ✓ Lightly sand, clean and spot prime the knots with stain-blocking primer as above.
- ✓ Reapply top coat to knotted areas.
- ✓ Recoat entire area with your chosen top coat.

LAITANCE



A weak, crusty residue of loose concrete and aggregate that forms on the surface of new concrete and screed surfaces after curing and can cause coating failure due to poor adhesion.

POSSIBLE CAUSE

The level of laitance is increased by:

- Overuse of water in the concrete mix
- Over trowelling
- Exposure to rain and poor curing

SOLUTION

- ✓ Determine the thickness of laitance by scoring the surface of new concrete with a metallic edge.
- ✓ Select appropriate method of removal such as acid etching, shot blasting, grinding, abrading or mechanical stripping.
- ✓ Seal before painting with **Super Seal Premium Bonding Primer/ Sealer**.
- ✓ Finish with suitable **Ultima Plus** top coat for your project.



Lap marks appear as patches of uneven colour or gloss.

POSSIBLE CAUSE

- Poor application technique where wet paint is applied over dry, during the same coat, creating a layer of varying thickness.
- An unprimed or unsealed porous surface can cause paint to dry very quickly, increasing the risk of this effect.

SOLUTION

- ✓ Repaint the entire surface, working left to right (or *vice versa*) maintaining a wet edge and painting from the wet into the unpainted area until complete.
- ✓ To avoid, use a good quality primer on new surfaces. If surface is patched, recommend 1 coat **Super Grip Premium Problem-Solving Primer** or **Aqua Overglaze** (recommended for drywall).
- ✓ Use suitable tools that promote quick, smooth application and rollers for large areas.



No one wants to deal with mops and buckets. Water entering the house due to a leaking roof is a considerable headache for homeowners.

POSSIBLE CAUSE

- Improper construction
- Damaged flashing
- Cracks

SOLUTION

- ✓ Clean the roof thoroughly to remove any dust or debris. Remove fungus with an appropriate solution. If new concrete is 'glossy' smooth or unhydrated cement powder is still on the surface use an etching solution. Rinse with clean water and allow to dry.

Important! Check the weather forecast to ensure you have good dry conditions and allow enough time for coatings to dry.

Continued on next page

SOLUTION

- ✓ Use **Ultima Roof Coating** allowing for 1 gal per 50 sq. ft. of roof area. This is not a normal roof paint but is a liquid plastic that must be applied in layers to the correct thickness – about 1mm total wet thickness or about 2-3 coats. Select entire roof or area to be patched.
- ✓ Patch active cracks by first applying a bitumen-based adhesive tape (eg. Flashband) or by embedding woven 2mm mesh fabric in first coat.
- ✓ **First Coat:** Thin a suitable quantity for the first layer with about 25% water and apply with a brush, broom or roller and allow to dry (about 1 hour). **Second Coat:** Apply normal strength in a horizontal direction to the water flow and allow to dry (4-6 hours/ or leave overnight).
- ✓ **Final Coat:** Apply normal strength in the direction of the water flow and allow to fully dry to achieve leak proof properties.

Small cracks and open seams can be filled using a filler of 1 part Ultima Roof Coating and 3 parts fine sand.





Galvanized sheeting may develop rust spots with age or small gaps around nail heads and require patching to prevent leaks.

POSSIBLE CAUSE

- Corrosion in older sheeting
- Gaps where sheets are nailed
- Cracks

SOLUTION

- ✓ Remove all loose and flaking rust with a wire brush. Sand to remove remaining encrusted rust and to smooth. Thoroughly clean and degrease the area to be patched. An ammonia solution works well. Protect with an anti-corrosive primer, **Rust Chem Universal Primer** or if heavily rusted, **Rust Chem Anchorlite Heavy Duty Primer**.

Continued on next page

SOLUTION

- ✓ Use **Ultima Roof Coating** to patch leaks. This is not a normal roof paint but is a liquid plastic that must be applied in layers to the correct thickness – about 1mm total wet thickness or about 2-3 coats.
- ✓ Patch holes by first applying a bitumen-based adhesive tape (eg. 'Flashband') or by embedding woven 2mm mesh fabric in first coat.
- ✓ **First Coat:** Thin a suitable quantity for the first layer with about 25% water and apply with a brush, broom or roller and allow to dry (about 1 hour). **Second Coat:** Apply normal strength in a horizontal direction to the water flow and allow to dry (4-6 hours/ or leave overnight).
- ✓ **Final Coat:** Apply normal strength in the direction of the water flow and allow to fully dry to achieve leak proof properties.

Caution! *If roof is made up of small sheets be careful not to seal the horizontal overlap which can accommodate run off. Vertical seams can be sealed..*

NOT RECOMMENDED FOR SHINGLE ROOFS

MOLD/MILDEW



A fungal growth that can cause health concerns and damage and discolour paintwork.

POSSIBLE CAUSE

A high level of moisture (on the surface or due to humidity) and is prevalent in areas that do not get direct sunlight.

SOLUTION

- ✓ Wearing the appropriate protective gear, clean the area with a mildew remover or bleach solution. Textured surface may need to be scrubbed. Rinse clean and allow to dry.

Continued on next page

Satin or Gloss finishes are recommended for areas that require frequent cleaning.



SOLUTION

- ✓ Recoat using a high quality paint that has excellent mildew protection such as **Ultima Plus** exterior formulations that contain **MildewGuard Technology™** - a patented slow-release biocide mechanism that has been independently tested and proven to overall outperform several international and regional competitors.

LONGER TERM PROTECTION FROM FUNGUS AND MOLD



Ultima Plus with MILDEWGUARD TECHNOLOGY™ has been formulated with unique micro-encapsulated biocides designed to release slowly over the life of the coating. Unlike most paints that lose their anti-mildew effectiveness within six months, **Ultima Plus** will resist the growth of fungus and algae for much longer.

MUD CRACKING



Deep, irregular cracks resembling dried mud sometimes seen in emulsions.

POSSIBLE CAUSE

- Paint is applied too thickly, usually over a porous surface sometimes to compensate for poor hiding.

SOLUTION

- ✓ Remove by scraping and sanding.
- ✓ Apply a suitable primer coat (only if required)
- ✓ Recoat taking into consideration the existing system. Recommend water-based paint such as **Ultima Plus Emulsion** in the desired sheen or if oil-based/alkyd is preferred, **Ultima Plus Satin** or **Gloss Oil Enamel**.



PAINT INCOMPATIBILITY



Top coat fails to adhere to the previous coating system.

POSSIBLE CAUSE

- Use of water-based paint over slick, usually multi-layered, old, oil-based alkyd paint.
- Poor quality, low-adhesion, water-based top coat applied over smooth, oil-based paint.

SOLUTION

- ✓ Scrape and sand to a sound, paintable surface
- ✓ Apply suitable primer if bare substrate is exposed.
- ✓ Recoat using oil-based alkyd such as **Ultima Plus Satin** or **Gloss Oil Enamel** or after a light sanding, apply any water-based acrylic **Ultima Plus Emulsion**.

PEELING



Loss of paint due to poor adhesion.

POSSIBLE CAUSE

- Seepage of moisture into the substrate
- Inadequate surface preparation
- Painting on a wet surface (especially oil-based paints)
- Highly humid conditions or rain during or shortly after painting
- Use of a poor quality paint, low in binders and high in fillers.

SOLUTION

- ✓ Remove all loose paint. Sand, clean and prepare dry sound surface for painting.
- ✓ Apply suitable primer if bare substrate is exposed (**Ultima Wood Primer** or **Ultima Concrete & Drywall Primer**). If risk of moisture still prevalent in concrete, apply 1 coat **Super Block Waterproofing Masonry Paint** or **Super Seal Premium Bonding Primer/ Sealer** instead.
- ✓ Top coat considering the existing system. Directly over oils, apply **Ultima Plus Satin** or **Gloss Oil Enamel** or after a light sanding to de-gloss surfaces, recommend **Ultima Plus Flat** or **Satin Exterior** or **Acrylic Porch & Patio Enamel**.

PEELING ON CHALKY SURFACE



Formation of fine powder on the surface of the paint film as a result of weathering, which can cause colour fading.

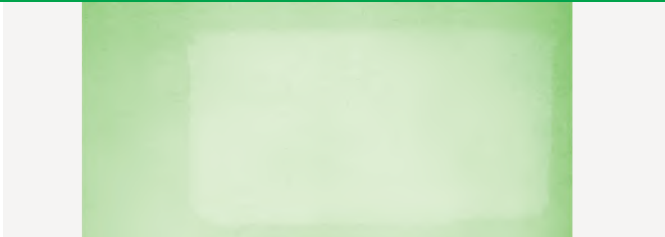
POSSIBLE CAUSE

- Use of a poor quality paint, low in binders and high in fillers.
- Use of an interior paint for an outdoor application.
- Moisture in the substrate or natural weathering, causing deterioration of paint film.

SOLUTION

- ✓ Remove as much of the loose material and chalk residue as possible. Clean and allow to dry.
- ✓ If still chalky, apply 1-2 coats **Super Seal Premium Bonding Primer/ Sealer**.
- ✓ Recommend **Ultima Plus Flat or Satin Emulsion** or **Acrylic Porch & Patio Enamel**.

PICTURE FRAMING



An area of uneven colour or sheen level that can appear when a wall is painted with a roller but is brushed at the edges and corners.

POSSIBLE CAUSE

- Difference in spread rates result in uneven coverage.
- Using wrong type or level of colourant or adding to a non-tintable paint.

SOLUTION

- ✓ Repaint area working in small sections, left to right (*or vice versa*) maintaining a wet edge and painting from the wet into the unpainted area until complete.
- ✓ Correct colourant-base must be used. Paint must be thoroughly stirred before use especially if stored for long period. Recommend using a mechanical mixer.
- ✓ Use suitable, good quality tools that promote quick, smooth application.



Failure of dried paint to adequately obscure the surface below.

POSSIBLE CAUSE

- Use of low quality paint or unsuitable applicators.
- Incorrect combination of tinting base and colour.
- Overthinning or spreading paint.
- Top coat is applied over highly contrasting colour.

SOLUTION

- ✓ Reapply top coat using a quality product and appropriate application tools.
- ✓ Follow manufacturer's recommendations regarding correct spread rate and wet/ dry film thickness. Be cautious if thinning paint.
- ✓ Use a suitable primer/ undercoat for drastic changes in colour. Consider tinting to grey or tone of final finish. Note: some accent colours might require extra coats e.g. bright yellows, bright reds and oranges.

ROLLER SPATTERING



Tendency of a roller to throw off small droplets of paint during application.

POSSIBLE CAUSE

- Use of paint with poor roller application properties.
- Use of poor roller-application technique.

SOLUTION

- ✓ Ensure that surfaces not to be painted are properly protected.
- ✓ Use a suitable, high quality paint and apply with roller suitable to the surface and selected paint system.
- ✓ Do not overload the roller with paint or apply too much pressure.
- ✓ Use good application technique working in 3 ft. sq. sections applying paint in a zigzag “M” or “W” pattern. Do not overwork the paint once it is applied.

Check out Which Roller p.143





Reddish-brown stains on the paint surface.

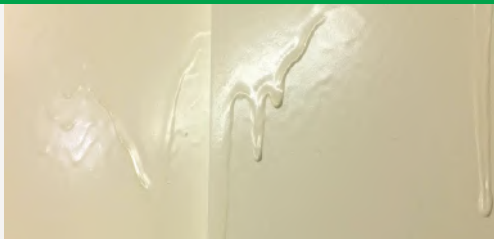
POSSIBLE CAUSE

- Non-galvanized iron nails have not been countersunk and filled over and are exposed to weathering resulting in rust.

SOLUTION

- ✓ Wash off rust stains. Remove tough stains with a dilution of muriatic acid.
- ✓ Sand nail heads and spot prime with **Rust Chem Anchorlite Heavy Duty Primer** to inhibit further rusting.
- ✓ Top with a layer of **Harris All Purpose Siliconized Acrylic Caulking**. (if possible countersink the nail heads further).
- ✓ Spot prime caulked patches with **Super Grip Premium Problem-Solving Primer** or **Ulttima Wood Primer** and allow to dry.
- ✓ If required, apply full coat of suitable primer coat such as **Ulttima Wood Primer**, **Super Grip Premium Problem-Solving Primer** or **Ulttima Concrete & Drywall Primer**.
- ✓ Recommend water-based acrylic such as **Ulttima Plus Emulsion** or if oil-based/alkyd system is preferred, **Ulttima Plus Satin or Gloss Oil Enamel**.

SAGGING



Paint not 'holding' to the surface, runs downward.

POSSIBLE CAUSE

- Paint applied too thickly.
- Poor quality or overly thinned paint.
- Applying paint on a very smooth surface without abrading or using the appropriate primer.

SOLUTION

- ✓ If runs occur during application then simply wipe clean or when dry, sand smooth with wet and dry sandpaper with warm soapy water (or solvent as suitable) to refine the surface and recoat.
- ✓ Avoid poor quality paints and applying too thickly. It is preferable to apply 2 thin, even coats instead of one thick one.
- ✓ Exercise caution when thinning paint for special application purposes.
- ✓ To prevent sagging on very smooth surfaces, lightly sand surface and first apply 1 coat **Super Grip Premium Problem-Solving Primer** formulated for high-adhesion and allow to dry before top coating with water-based or oil-based system as desired.

SHRIVELING/WRINKLING



Paint surface has a lined or crinkled appearance.

POSSIBLE CAUSE

- Paint applied too thickly or over insufficiently cured primer or first coat, can cause outer surface to dry faster than the paint below.
- Painting or exposing uncured paint to damp conditions including rain, dew, fog or high humidity levels.
- Painting over contaminated surface.

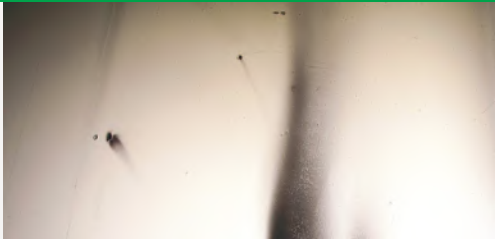
SOLUTION

- ✓ Scrape and sand to prepare dry, sound surface for painting.
- ✓ Reapply suitable primer if substrate is exposed.
- ✓ Reapply 1-2 finish coats. If using an oil-based system recommend **Ultima Plus Satin** or **Gloss Oil Enamel**.
- ✓ Check weather carefully especially when working with oil paints that generally have long dry/ cure times.



Consider using fast drying, water-based acrylics. Pro Speed Cover Gloss Emulsion, a special commercial formulation which is touch dry in 10 mins., recoats in 1 hour and cures in 4 hours!

SMOKE DAMAGE



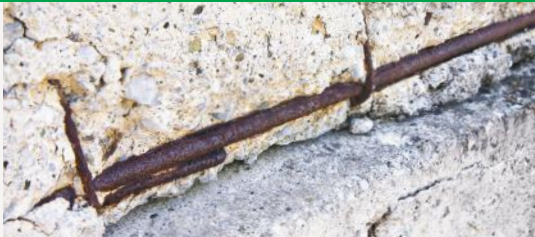
Whether soot or nicotine smoke, this residue is difficult to cover and will bleed through interior paint work.

POSSIBLE CAUSE

Cigarette smoke, candles, wood fires etc.

SOLUTION

- ✓ Remove as much grime as possible with a solution of trisodium phosphate (TSP) or a good degreaser by wiping area from top to bottom with a sponge. Wipe clean and allow to dry.
- ✓ Prime with a stain-blocker such as **Super Grip Premium Problem-Solving Primer** (acrylic) or **Zinsser B.I.N Primer** (shellac) and allow to dry fully before top coating.
- ✓ Apply at least 2 coats of **Ultima Plus** premium water-based or oil-based finish as desired. Overnight drying between coats is recommended.



When surface material such as stone or concrete, starts to break up and fall away.

POSSIBLE CAUSE

Moisture in the surface - due to inadequate curing, exposed surface or inadequate waterproofing - pushes outward weakening the substrate. It can also cause rusting to interior steel reinforcement which expands damaging the surrounding surface.

SOLUTION

- ✓ Check surfaces for moisture before coating. Using a concrete additive during construction such as **Harris Mortar Bond SBR** will enhance resistance to water.
- ✓ If moisture is entering the wall from surrounding ground surface, use an appropriate waterproofing liner such as **Harris Damp Seal DPM**.
- ✓ If moist conditions persist, seal out moisture with 1 coat **Super Block Waterproofing Masonry Paint** which can be applied to slightly damp surfaces.
- ✓ Finish with 2 coats of suitable **Ultima Plus Emulsion**. Recommend exterior formulations to provide protection against growth of mildew.



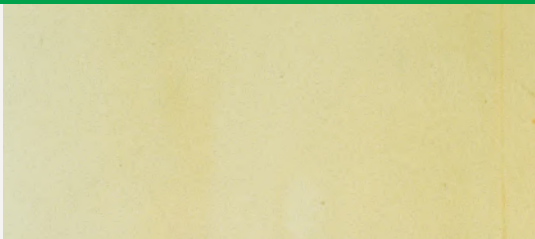
Unpainted areas sometimes seen on an oil-based enamel finish.

POSSIBLE CAUSE

- Defective adhesion due to surface contamination (oil, grease, wax, polish etc.).
- Poor adhesion due to water-based paint applied to a shiny or glossy surface that hasn't been properly abraded.

SOLUTION

- ✓ Sand with wet and dry sandpaper using warm soapy water or solvent as suitable to refine the surface. Rinse thoroughly, dry and repaint.
- ✓ If surface needs to be removed, thoroughly sand and clean. Apply 1 coat of **Super Grip Premium Problem-Solving Primer** which has excellent adhesion properties.
- ✓ Top coat as desired with either oil-based or water-based **Ultima Plus**.



Development of a yellow cast in solvent-based enamels, most noticeable in the dried films of white paints or clear varnishes.

POSSIBLE CAUSE

- Chemical change of alkyd or oil-based paint or varnish.
- Heat from stoves, radiators and heating ducts.
- Lack of light (eg. behind pictures or appliances, inside closets, etc.)

SOLUTION

- ✓ If the surface is in otherwise good repair, prepare to repaint. If surface is coated with a gloss paint, give a light sanding first.
- ✓ Recoat with a premium quality water-based acrylic paint in place of oil-based paint. Recommend **Ultima Plus Gloss Emulsion** (fully tintable) or **Pro Speed Cover Gloss Emulsion**.

PRODUCT GUIDE



DECORATIVE PRIMERS

ULTIMA CONCRETE & DRYWALL PRIMER

SUBSTRATES Fully cured Concrete & Masonry, Drywall/ (Gypsum Board/ Sheetrock)



Water-Based
Concrete/ Drywall

USE

- Fills and seals porous surfaces
- Creates uniform surface for top coat

FEATURES

- Excellent adhesion
- High solids formula
- Enhances surface for top coat

ULTIMA WOOD PRIMER

SUBSTRATES Use on dry, uncoated Wood and Plywood



Oil-Based
Wood

USE

- Fills and seals porous wood
- Creates uniform surface for top coat

Not suitable to seal sappy wood knots Requires use of a stain-blocking/ shellac primer

FEATURES

- Dry time 2 hours
- Recoat 12 hours
- Sandable overnight
- Use Ultima Puritene Thinner

SUPER BLOCK WATERPROOFING MASONRY PAINT

SUBSTRATES Uncoated Concrete & Masonry



Water-Based
Waterproofs

USE

- Waterproofs above or below ground cement surfaces
- Reconditions masonry surfaces that show signs of spalling
- Can be applied to slightly damp masonry

FEATURES

- Penetrates & seals
- Withstands up to 10 psi of water pressure
- Sand finish texture
- Alkali resistant
- Mildew resistant
- Low odour

SUPER GRIP PREMIUM PROBLEM-SOLVING PRIMER

SUBSTRATES Almost all surfaces including: Concrete, Masonry, Wood and Non-Ferrous Metals



Water-Based
High Adhesion

USE

- Excellent adhesion on very smooth surfaces
- Seals out stains
- Seals wood knots in 2 coats

FEATURES

- High adhesion
- Alkali resistant
- High hiding
- Quick drying. Touch dry 30 mins. Recoat 2 hours.
- Use on variety of surfaces
- Low odour

SUPER SEAL PREMIUM BONDING PRIMER/ SEALER

SUBSTRATES Concrete



Water-Based
**Bonds/ Seals
Concrete**

USE

- An alkali resistant curing membrane on fresh concrete
- Penetrates porous cementitious surfaces to bond surface
- Protects against ingress of water

Note: Not recommended as a clear top coat.

FEATURES

- Alkali resistant
- Chemical resistant
- Improves abrasion resistance
- Tack dry 2-4 hours. Recoat 6 hours.
- Colourless with a slight sheen
- Use Ultima Puritene Thinner

All primers are white except for Super Seal Premium Bonding Primer/ Sealer which is clear with a slight sheen. Note it is often prudent to tint primers to reduce the number of top coats required.

DECORATIVE PAINTS



ULTIMA PLUS
PERFORMANCE • COLOUR • ENVIRONMENT

A top quality range of premium paints formulated to deliver superlative performance and durability in Caribbean weather conditions. Ultima Plus features an exceptional colour system that provides excellent coverage and long lasting (fade resistant), rich colours. The range is available in 5 water-based, low odour and environmentally friendly emulsions with cross linking acrylic resins that seal many surfaces without priming and 2 oil-based paints that can be tinted to virtually any colour. Suitable for brush, roller or spray application.

Technical Data Sheets (TDS) can be downloaded from www.championsofcolour.com



ULTIMA PLUS

PERFORMANCE · COLOUR · ENVIRONMENT

5


TECHNOLOGIES
IN ONE CAN



YOUR ULTIMATE PAINT SOLUTION



www.championsofcolour.com

 / [championsofcolour](https://www.facebook.com/championsofcolour)

Ultima Plus 100% Acrylic (Water-Based) Emulsions

Exterior Flat



Dry Time:

Touch dry:
15 mins

Recoat:
After 2 hours

A rich, durable, low odour formula that has excellent resistance to UV rays and salt spray and flat/matte finish will help hide small surface imperfections.

Use: Interior and exterior - Concrete, plaster, gypsum board, wood and metal (ferrous and non-ferrous).

Check TDS for recommended prep and full product details.

Coverage: 10 m² per litre (350 sq. ft./ US gal)

VOC: 40-49 grams per litre. Low VOC
Tinted with Zero VOC colourants.

Interior Flat



Dry Time:

Touch dry:
15 mins

Recoat:
After 2 hours

A rich, durable, formula that is virtually odourless ideal for recoating interiors and flat/ matte finish will help hide slight surface imperfections.

Use: Interior concrete, plaster, gypsum board (drywall) and wood.

Check TDS for recommended prep and full product details.

Coverage: 10 m² per litre (350 sq. ft./ US gal)

VOC: 10 grams per litre. Low VOC

Tinted with Zero VOC colourants.

Interior / Exterior Satin



Dry Time:

Touch dry:
30-60mins

Recoat:
After 4 hours

A rich, durable, low odour formula that has excellent resistance to UV rays and salt spray with a mid-sheen/ satin finish which is practical and washable.

Use: Interior & exterior - Concrete, plaster, gypsum board, wood and metal (ferrous and non-ferrous).

Check TDS for recommended prep and full product details.

Coverage: 10 m² per litre (350 sq. ft./ US gal)

VOC: 48-49 grams per litre. Low VOC

Tinted with Zero VOC colourants.

Acrylic Porch & Patio Enamel



Dry Time:

Touch dry:
20 mins

Recoat:
After 2 hours

A rich, durable abrasion-resistant formula that dries quickly and has excellent resistance to UV rays and salt spray. The hard, low-sheen finish offers excellent washability and is suitable for floors & high traffic areas.

Use: Interior and exterior - Concrete (floors, roofs, walls); wood (floors, cabinets and trim) and metal (ferrous and non-ferrous); tennis courts. *Check TDS for recommended prep and full product details.*

Coverage: 10 m² per litre (350 sq. ft./ US gal)

VOC: 36-43 grams per litre. Low VOC
Tinted with Zero VOC colourants.

Gloss Emulsion



Dry Time:

Touch dry:
20 mins

Recoat:
After 2 hours

A rich, durable formula that dries quickly and has excellent resistance to UV rays and salt spray. The bright glossy enamel finish offers excellent washability and doesn't yellow.

Use: Interior and exterior - Wood (ceilings, cabinets and trim); masonry and metal (ferrous and non-ferrous).

Check TDS for recommended prep and full product details.

Coverage: 10 m² per litre (350 sq. ft./ US gal)

VOC: 38-46 grams per litre.
Tinted with Zero VOC colourants.

Ultima Plus Premium Oils

Satin Oil Enamel



Dry Time:

Touch dry:
4-6 hours

Recoat:
After 12 hours

A rich, durable oil alkyd, solvent based paint with mid-sheen finish. Creates a tough, high-hiding coating that is stain and mildew resistant – perfect for hard-wearing areas.

Use: Interior & exterior - Concrete, plaster, gypsum board, wood and metal (ferrous and non-ferrous). *Check TDS for recommended prep and full product details.*

Coverage: 10 m² per litre (350 sq. ft./ US gal)

VOC: 349 grams per litre. *Tinted with Zero VOC colourants.*

Gloss Oil Enamel



Dry Time:

Touch dry:
4-6 hours

Recoat:
After 12 hours

A rich, durable oil alkyd, solvent based paint with high sheen, glossy finish. Creates a tough, high-hiding coating that is stain & mildew resistant – perfect for hard-wearing areas.

Use: Interior & exterior - Wood and metal (ferrous and non-ferrous). *Check TDS for recommended prep and full product details.*

Coverage: 10 m² per litre (350 sq. ft./ US gal)

VOC: 457 grams per litre.
Tinted with Zero VOC colourants.

PRO SPEED COVER



A cost-effective, versatile, performance quality, acrylic range specifically designed for professionals. The interior/exterior range is suitable for use on commercial or residential new build or projects that require frequent refreshment. The line is engineered with key features that enhance productivity, saving time and money on site.

Pro Speed Cover Flat Emulsion



- Spreads further. Covers up to 30% or 200 sq. ft. per gal. more than regular paints.
- Good hide & mildew protection
- Tintable

Use: Concrete, wood and metal (ferrous and non-ferrous). *Check TDS for recommended prep and full product details..*

Coverage: 12.5 m² per litre (500 sq.ft./US gal)

VOC: 14 grams per litre. Low Odour
Tinted with Zero VOC colourants.

Dry Time:

Touch dry:
15 mins
Recoat:
After 1 hour

Pro Speed Cover Eggshell Emulsion



Dry Time:

Touch dry:
20 mins

Recoat:
After 1 hour

- Elegant, yet practical 'eggshell' finish (between Satin and Flat)
- Spreads further. Covers up to 20% or 100 sq. ft. per gal. more than regular paints.
- Good hide & mildew protection
- Tintable

Use: Concrete, wood and metal (ferrous and non-ferrous). *Check TDS for recommended prep and full product details.*

Coverage: 12.5 m² per litre (500 sq. ft./US gal)

VOC: 16 grams per litre. Low Odour
Tinted with Zero VOC colourants.

Pro Speed Cover Gloss Emulsion



Dry Time:

Touch dry:
10 mins

Recoat:
After 1 hour

- Quick drying, hi-shine gloss
- Non-yellowing
- Fast cure – resists 'blocking' in as little as 4 hrs.
- Available in Bright White only

Use: Interior & exterior - Concrete, plaster, gypsum board, wood and metal (ferrous and non-ferrous). *Check TDS for recommended prep and full product details.*

Coverage: 10 m² per litre (400 sq. ft./ US gal)

VOC: 82 grams per litre. Low Odour



PRO SPEED COVER™ GLOSS EMULSION

INTERIOR / EXTERIOR



EXCELLENT FOR
CUPBOARDS,
WINDOWS
& TRIM

Bright Glossy White
**DRIES 20 X FASTER
THAN OIL PAINT**

- ✓ QUICK DRYING - RECOATS IN 1HR
- ✓ HI-SHINE GLOSS
- ✓ NON YELLOWING
- ✓ RESISTS BLOCKING
- ✓ EASY WATER CLEAN UP



PRO SPEED COVER™ FLAT EMULSION

INTERIOR / EXTERIOR



**EXCELLENT
SPREADABILITY**

COVERS UP TO
200 SQ. FT. MORE
PER GAL!



FLOWTEK 555*

**CONTAINS FLOWTEK 555
FOR BETTER COVERAGE
AND HIDE**

- ✓ HIGHLY COST EFFECTIVE
- ✓ EXCELLENT COVERAGE
- ✓ MILDEW PROTECTION
- ✓ LOW ODOUR
- ✓ TINTABLE

PRODUCTS - DECORATIVE PAINTS

A good value interior/exterior range that can be tinted in about 4000 colours. Available in a choice of two low odour water-based sheens or oil, it is perfect for all parts of the home. Formulated to resist fade and mildew to keep properties looking fresh.

Perma

Jamaica only



PRODUCTS - DECORATIVE PAINTS

EXCEL

The ideal choice for quick, affordable decorating of your home, business or surroundings.

Easy to choose

Easy to use

Easy on the pocket

EXCEL Flat Emulsion



Water-Based
**Available in
30 colours**

Coverage

9 m² per litre (360 sq ft/ US gal)

Dry Time

Touch dry: 15 mins Recoat: 2 hours

VOC

14-16 grams per litre. Low odour.

EXCEL Gloss Oil



Oil-Based
**Available in
10 colours**

Coverage

7-10 m² per litre (280-400 sq ft/ US gal)

Dry Time

Touch dry: 4-6 hours Recoat: 12 hours

VOC

227 grams per litre. Low odour.

COMPARISON OF DECORATIVE BRANDS



ULTIMA PLUS



PRO SPEED COVER

Durability/Washability	★★★★★	★★★★
Coverage	400-450 sq ft per gal	500-650 sq ft per gal
Hiding Power	★★★★★ + COVERFAST TECHNOLOGY™	★★★★
Fungal Resistance	★★★★★ + MILDEWGUARD TECHNOLOGY™	★★★★
Fungicide Type	MildewGuard Slow Release Technology	Standard
Fade Resistance	★★★★★ + COLOURLAST TECHNOLOGY™	★★★★
Odour	Very Low + EASYBREATHE TECHNOLOGY™	Low
Self Priming	Yes	No
Environmentally Friendly	Ultra-Low VOC + SELFPRIME TECHNOLOGY™	Low VOC
Colour Range	59,000	20,000+
Estimated Lifetime *dependent on conditions	5-7 years	3 years

PRODUCTS - DECORATIVE PAINTS



PERMA
(Jamaica
Only)



EXCEL



	★★★★	★★★	Durability/ Washability
	400 sq ft per gal	360-400 sq ft per gal	Coverage
	★★★	★★★	Hiding Power
	★★★★	★★★	Fungal Resistance
	Standard	Standard	Fungicide Type
	★★★★☆	★★★☆	Fade Resistance
	Low	Low	Odour
	No	No	Self Priming
	Low VOC	Low VOC	Environmentally Friendly
	Up to 4000	22	Colour Range
	3 years	2 years	Estimated Lifetime *dependent on conditions

TEXTURED FINISH



Lifetime Durability

Interior/ Exterior Use

One-Coat Application

Spray/ Trowel Applied

Wide Range of Colours

PRODUCTS - TEXTURED FINISH

TROWELTEX TEXTURED COATING

Available in 4 grades, Superfine, Fine, Medium and Coarse. See chart p.120



Water-Based
Texture

USE

Ultra-durable, 1-coat* coral-stone finish which can be applied to virtually any surface including cement, masonry, wood & drywall

FEATURES

- Interior/ exterior
- Excellent durability
- Trowel or spray applied (hand finishing required)
- Low odour
- Tintable

*One coat is adequate for most projects but is dependent on surface conditions.

"Troweltex is suited to any design project from contemporary to traditional. Team that up with ease of application, durability and resistance to mold and mildew and you have an attractive, long lasting and affordable solution for both the exterior and interior finishes of your home." **Suzanne Griffith, Architect**

ELASTOTEX TEXTURED COATING

(Available in Fine, Medium and Coarse grades only.)

USE

Special water-based, elastomeric formulation for use on structures subject to movement that require a product that has the ability to flex. Ideal for tall buildings, panels or pre-cast concrete construction, areas prone to tremors.

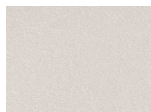
FEATURES

- Interior/ exterior
- Excellent durability
- Enhanced flexibility
- Resists cracking
- Tintable

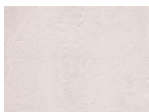
"We ...found it [Elastotex] to be an excellent fit, especially for homes constructed with concrete panels. The product was easy to apply and its elastomeric formula was more capable of minimizing the effects of the minor joint movements that sometimes occur, when building with precast concrete panels. We are completely satisfied with the product and its performance." **Roddy Davis, Spring Homes**

PRODUCTS - TEXTURED FINISH

Troweltex Textured Coating is fully tintable. The colour is added to the coating and then applied directly to surface.



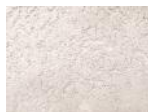
Superfine



Fine



Medium



Coarse

Approximate Coverage of Troweltex Textured Coating

GRADE	COVERAGE (IMPERIAL) based on 65 lb pail	COVERAGE (METRIC) based on 29.5 kg pail
Superfine	225 sq. ft. per pail or 2.5-2.75 lbs. per sq. yd.	21 sq. m. per pail or 1.40 kg. per sq. m.
Fine	195 sq. ft. per pail or 3 lbs. per sq. yd.	18 sq. m. per pail or 1.64 kg. per sq. m.
Medium	145 sq. ft. per pail or 4 lbs. per sq. yd.	13.5 sq. m. per pail or 2.19 kg. per sq. m.
Coarse	120 sq. ft. per pail or 5 lbs. per sq. yd.	11 sq. m. per pail or 2.68 kg per sq. m

TREATMENTS FOR TEXTURED COATINGS

REFRESH COLOUR



Water-Based
**Ultima
Plus**

USE

Brighten up or change your colour scheme with **Ultima Plus** premium paint.

FEATURES

- Interior/ exterior
- Mildew resistant
- Choice of sheens
- Tintable in a wide range of colours

PROTECT & SEAL



Water-Based
**Aqua
Overglaze**

USE

A clear sealer that helps extend life of textured coatings or can be applied to natural stone surfaces to reduce maintenance required

FEATURES

- Protects colour from UV degradation
- Helps repel moisture-causing mildew
- Makes surface washing easier
- Clear -with a slight sheen
(or use diluted to reduce sheen).

WOOD CARE



IT'S WHAT YOUR WOOD LOVES!

Durability rating is on scale of 1-5, where 5 is maximum durability for standard environments ie. it does not take into account high performance specialist and industrial systems. The rating does not refer to a time period as durability is highly dependent on use and environmental factors.

Wood Preparation – Interior Only

NITROCELLULOSE SANDING SEALER



Solvent Based
Bonds

USE	FEATURES
<ul style="list-style-type: none"> • To promote a sound, smooth wood base prior to coating. • Excellent for furniture & cabinetry 	<ul style="list-style-type: none"> • Sandable • Clear only • Touch dry 10 mins • Sandable 1h • Use Ultima Lacquer Thinner
DURABILITY	COLOURS
N/A	Clear only

Wood Varnish – Interior Only

NITROCELLULOSE WOOD LACQUER



Solvent Based
Quick Dry

USE	FEATURES
<ul style="list-style-type: none"> · Clear high gloss varnish · Excellent for furniture & cabinetry 	<ul style="list-style-type: none"> · Clear only · Touch dry 15 mins · Hard dry 1 hour · Use Ulttima Lacquer Thinner
DURABILITY	COLOURS
3.5	Clear only

GLOSS POLYURETHANE



Oil Based
High Durability

USE	FEATURES
<ul style="list-style-type: none"> · Excellent for indoor floors · Suitable for high traffic areas 	<ul style="list-style-type: none"> · Highly durable (min. 3 coats recommended) · Touch dry 30 mins. · Hard dry 2 hours · Use Ulttima Puritene Thinner
DURABILITY	COLOURS
4.5	Colours and Clear

Wood Varnish – Interior/Exterior

Maritime Spar Varnish



Oil Based
Outdoor

USE	FEATURES
Clear varnish recoat or apply to bare wood	<ul style="list-style-type: none"> Resists corrosion, sea spray and chemical attacks Use Ultima Puritene Thinner
DURABILITY	COLOURS
4	Clear only

Duraglaze Quick Drying Wood Stain



Water Based
**Quick Dry
Durability**

USE	FEATURES
<ul style="list-style-type: none"> Stain/ glaze for recoat or apply to bare wood Protective top coat over pickled or water-based painted surface 	<ul style="list-style-type: none"> Quick drying. Touch dry in 15 mins. Recoats in 2 hours. Non-yellowing
DURABILITY	COLOURS
4.5 interior 3.5 exterior	Semi-transparent colours and clear

Wood Varnish – Interior/Exterior

High Performance Poly-stain Satin



Oil Based
**High Build
Satin**

USE	FEATURES
<ul style="list-style-type: none"> · High adhesion · High build satin <p>Note: If clear topcoat required: Indoor-use Gloss Polyurethane; Outdoor-Poly-Stain Clear.</p>	<ul style="list-style-type: none"> · Easy to refinish · Lasts up to 3 years on vertical surfaces
DURABILITY	COLOURS
4	Colours and Clear

High Performance Poly-stain Gloss



Oil Based
**High Build
Gloss**

USE	FEATURES
<ul style="list-style-type: none"> · High adhesion · High build gloss semi-transparent finish <p>Note: If clear topcoat required: Indoor-use Gloss Polyurethane; Outdoor-Poly-Stain Clear.</p>	<ul style="list-style-type: none"> · Easy to refinish · Lasts up to 3 years on vertical surfaces
DURABILITY	COLOURS
4	Colours and Clear

Wood Varnish – Interior/Exterior

High Performance Penetrating Stain



Oil Based
Easy Care

USE	FEATURES
<ul style="list-style-type: none">· Penetrates deep into wood· Matte finish low build semi-transparent finish· NOT to be used over other coatings	<ul style="list-style-type: none">· Easy to refinish· Water repelling· Resists peeling and flaking· Exterior surfaces<ul style="list-style-type: none">- Protects 2 years on horizontal and 4 years on vertical
DURABILITY	COLOURS
2	Colours and Clear

RUST CHEM PRIMERS & COATINGS FOR METAL

Metal Primers

RED OXIDE PRIMER



Oil Based
Shop Coat

USE	FEATURES
Excellent shop coat (used mainly by metal fabricators) to stop rusting before sale or use.	<ul style="list-style-type: none">• Quick drying• Prevents surface rusting• Colours: Red only• Use Ultima Puritene Thinner

ANCHORLITE HEAVY DUTY PRIMER



Oil Based
Heavy Duty

USE	FEATURES
Helps prevent and delay corrosion when used on ferrous metal.	<ul style="list-style-type: none">• High build• Rust inhibiting• Contains Zinc Chromate (anti-corrosion pigment)• Colours: Red only• Use Ultima Puritene Thinner

Metal Primers

UNIVERSAL PRIMER



Oil Based
High Adhesion

USE

Inhibits corrosion and is a good barrier primer. Can be used to transition to a high performance top coat system.

FEATURES

- Fast drying
- Non-lifting
- Very good adhesion
- Colours: Yellow only
- Use Ulttima Xylol Thinner

Metal Top Coats

SUPER GLOSS ENAMEL



Oil Based
High Gloss

USE

High gloss top coat for metal or wood

FEATURES

- Lead free
- Excellent levelling
- Dries to a smooth finish
- Tintable or 10 safety/ industrial colours including black & white
- Use Puritene Ulttima Thinner

Metal Top Coats

QUICK DRY ENAMEL



Oil Based
Quick Dry

USE	FEATURES
Tough industrial grade top coat for spray application	<ul style="list-style-type: none"> · Very quick drying · Excellent abrasion resistance · White and custom tints available · Use Ultima Xylol Thinner

DECORATIVE TOP COATS

Note, decorative water-based and oil-based top coats can also be used to finish metal surfaces that have been suitably primed. We recommend:

WATER BASED EMULSIONS

Ultima Plus Gloss Emulsion
Ultima Plus Satin Emulsion
Pro Speed Cover Gloss Emulsion

OIL-BASED ALKYDS

Ultima Plus Gloss Oil Enamel
Ultima Plus Satin Oil Enamel

BUILDING PRODUCTS



Waterproofs

HARRIS MORTAR BOND SBR

Waterproofing and bonding admixture for use with cementitious mixes and as a reliable water resistant bonding agent for concrete screeds and mortars. Typical uses include waterproofing water tanks, pools and renders in addition to providing chemical and wear resistant floor screeds.



Bonds

HARRIS MORTAR BOND PVA

Economical quick drying adhesive, sealer, binding agent and cement admixture. As an adhesive it will bond most building materials. Typical uses include bonding of cement screeds, renders and plasters, as an admixture for mortars and as a sealer for porous concrete, renders and plaster to minimise dusting and reduce porosity. Avoid excessive mixing of mortar or concrete which has PVA added to it.



Speed Dry

HARRIS CEM SPEED ADMIX

Accelerates the setting time of renders, non-reinforced concrete, screeds and paving. It may be added to plain cement to form a super rapid hardener for plugging leaks in concrete. Benefits include reduction of setting time, increased early strength of render and concrete, and increased rate of formwork reuse.



Pliability

HARRIS MORTAR ADMIX

Mortar plasticiser which replaces lime in the mix and reduces the amount of water required to achieve the desired workability thus reducing the possibility of shrinkage in block laying and plastering mortars. Other benefits include easier and faster mortar application and spread, reduction of hairline cracks, moisture seepage, and reduced damage to decorative finishes.



Anti-Slip

HARRIS AGGETEX H

Achieves textured slip resistant concrete.



Waterproof Membrane

HARRIS DAMP SEAL D.P.M

Rubber/bitumen surface applied emulsion. Excellent adhesive qualities, dries to a tough, black, seamless, flexible waterproof and vapour proof membrane. Can also be applied to exterior basement walls in conjunction with waterproof renders to provide damp and vapour proof conditions to basement spaces.

OTHER PRODUCTS & COATINGS

Below is a list of some of the wide range of products we carry

*Stocked to order items



Applicators & Tools

- Brushes
- Extension Poles
- Graco Spray Equipment*
- Rollers
- Scrapers
- Trays



Related Products

- Caulk
- Painters Tape
- Patching Compound
- Sandpaper

PRODUCTS - OTHER



Specialty Coatings

- Aerosols
- Anti-Slip Textured Floor Coating*
- Concrete Stains & Sealers*
- Elastomeric Roof Coatings*
- Pool Coatings*
- Road Marking Paint (oil-based)
- Ulttima Acrylic Traffic Paint
- Ulttima Roof Coating
- Zero VOC Paints*
- Zinsser Primers

Seamless Resin Flooring

- Decorative (Commercial)
- HACCP antimicrobial (Food Processing)
- Heavy duty (Industrial)
- Hygiene systems (Health)
- Parking Decks
- Pool Decks

High Performance Industrial Coatings

Devoe, acrylic, alkyd, epoxy and polyurethane systems for special purposes.

SEAMLESS, HYGIENIC RESIN FLOORING FOR FOOD SERVICE

Durable fit-for-purpose cementitious urethane flooring systems suitable for hard-wearing food and beverage operations.

Customized to meet your priorities and budget considerations

Features antimicrobial- silver-ion based additive Polygiene®, that resists bacteria.

Harris Paints supplies and supervises installation of an extensive range of specialist floor coatings throughout the Caribbean, manufactured by Flowcrete, the world leader in seamless resin flooring for commercial and industrial environments.

Barbados – Michael Babb
Dominica – Marshall Maloone
Guyana – Garfield Manasseh
Jamaica – Claude Manning
St Lucia – Christopher Joseph

www.championsofcolour.com



Flowcrete
for the world at your feet

www.flowcreteamericas.com



HARRIS

**PRO
TIPS**

PRO TIPS

Pro Tip #1

HOW TO REMOVE PAINT FROM GLASS

Spray with glass cleaner like Windex or use a vinegar/water solution.

Use razor blade to remove paint drops/ splashes.



Pro Tip #2

HOW TO TEST CONCRETE FOR MOISTURE

If there is too much water in concrete when you paint, the coating will likely peel or bubble so it's best to check before you start. Tape a 12 x 12 square of heavy plastic sheeting or aluminum foil in several locations. Try to get the sheeting as air-tight as possible. Check after 24 hours. If condensation is evident or there is a dark patch, the surface is too moist. Either allow to dry further or use a moisture sealing Primer such as **Super Seal Premium Bonding Primer/ Sealer**.

Pro Tip #3

CURING NEW CONCRETE

New concrete is very alkaline with a pH of 12 to 14. It also has high moisture content. These characteristics will interfere with paint adhesion, leading to bubbling and peeling. Allowing the new concrete to cure for at least 30 days can reduce the alkalinity and moisture content to levels low enough for the concrete to take paint. But it can take as long as 90 days before new concrete has cured enough for painting, depending on climate and weather.

Pro Tip #4

HOW TO AVOID EVER WASHING OUT ANOTHER PAINT TRAY

It takes a bit of elbow grease to scrub the roller tray clean between paint sessions. Dried on emulsion can be difficult to remove. Tie a plastic bag over your tray then pour in the paint and use. When finished simply remove and you'll have nothing to clean!



Image credit dreambookdesign.com

Pro Tip #5

WET VS DRY SANDING

Use wet sanding with a very fine grit paper when you want a mirror-smooth finish. This technique is often used after rougher, dry sanding (which shapes and levels). Wet sanding will help remove remaining scratches and reduce dust. Dip sandpaper in water with a few drops of liquid detergent which will help the paper to glide over the surface for highly refined, scratch-free finish. See Which Sandpaper p.144.



Pro Tip #6

HOW TO TELL IF SURFACE IS OIL PAINT OR EMULSION

To find out what paint was previously used so you don't encounter compatibility issues, dip a cotton ball in acetone and rub. If some paint is removed it's an acrylic paint.

Pro Tip #7

EASY DIY ETCHING SOLUTION

This simple solution can be applied to hard, power floated concrete floors to provide key or 'tooth' to help aid paint adhesion. Be sure to wear proper protective gear when preparing.

Mix dilution of 1 part muriatic acid to 2 parts water, by volume, in a plastic container. Apply to wetted concrete, and allow to sit for 2-10 mins. before thoroughly removing.

Note Well: If acid etching, be sure to move all stainless-steel objects far from the area to avoid corrosive damage to fixtures and equipment.

Pro Tip #8

HOW TO KNOW WHEN WOOD IS DRY ENOUGH TO PAINT

Depending on storage conditions and exposure natural wood can retain high degrees of moisture and should contain no more than 19% moisture content before painting. If in doubt, test in several places with a moisture meter.



Pro Tip #9

USE PAINTS WITH LONG ACTING BIOCIDES

Most paints are made with agents that fight mold and mildew but some will wash out within 6 months leaving your home unprotected. Harris Ulttima Plus paint includes special **MildewGuard Technology™**, an advanced system of encapsulated biocides that are engineered to slowly release mildew-fighting agents over time so that painted surfaces look better for longer. **MildewGuard** is found in **Harris Ulttima Plus** paints and is proven to outperform conventional biocides.



Pro Tip #10

CHECK pH LEVEL

You want the pH of your new concrete to be 9 or less for good adhesion. Test the pH level of new concrete by applying distilled water to the slab. Wait 60 seconds and dip a strip of pH indicator paper in the water. The colour will change. Compare the paper's colour to the chart supplied with the strips to determine the pH level.

QUICK REFERENCE



UNIT	CONVERSION	UNIT	CONVERSION	UNIT	CONVERSION
mm	1	in	0.0393701	mm	1
cm	10	in	0.393701	mm	10
m	1000	in	39.3701	mm	1000
mm	1	ft	0.3048	mm	1
cm	10	ft	3.048	mm	10
m	1000	ft	304.8	mm	1000
mm	1	yd	0.9144	mm	1
cm	10	yd	9.144	mm	10
m	1000	yd	914.4	mm	1000

HAZARD	PURPOSE	EXAMPLES
SAFETY	INFORMATION	Signage and to inform; also repair.
SAFETY	SAFETY	Safe zones; first aid eq.
SAFETY	SAFETY	Danger present especially machinery that can cause injury.
SAFETY	SAFETY	To indicate areas where there is exposure to radiation.
SAFETY	SAFETY	Continuous/ hazardous areas; highly flammable materials; fire protection equipment; exits & alarms.
SAFETY	SAFETY	Mark walk ways; steps, unguarded areas to avoid slips, trips and falls.

WHICH ROLLER?

Choose a good quality roller that will provide better value in the long run because they,



1. Last longer - resist matting and have better durability
2. Hold more paint per dip and save time!
3. Provide smoother coverage with fewer air bubbles and less lint in the coating. Also denser fibers reduce spattering and delivers even layoff from the beginning to the end of the stroke.

Consider Knitted or Woven

Roller covers that are knitted are more prone to shedding. Fibres in woven covers are secured tightly and won't pull out. Woven covers are preferred for working with oils that tend to have more 'pull'. If you use knitted covers we recommend that you wash them first or de-lint with some masking tape to remove loose

WOVEN



KNITTED



QUICK REFERENCE

Cover Type	Ideal Use	Special Features	Quality
Ultima MicroFibre Woven	Latex emulsions (very low nap can be used for oils)	Lint free Excellent pick-up and coverage (3/8 loaded roller can cover 12m or nearly 40ft!) Minimal splatter	Excellent
Perma Polyacrylic Knitted	Very good for emulsions . Suitable for use with all paints, stains and primers	Very good pick-up Striped to indicate when to reload	Good
Excel Polyester Knitted	Emulsions or oils. Can use with all paints, stains and primers	Good pick-up Ideal for budget jobs or single use	Budget
Perma Simulated Mohair Knitted	Oils, varnishes and urethanes	Achieves high quality fine finish (spray-on look) Excellent for wood floors	Excellent
100% Natural Merino Woven	All emulsions or oil-based paints	Very high quality hand-made construction More fibres per square inch – up to 8 times more than synthetics Excellent pick-up	Excellent

QUICK REFERENCE

WHICH SANDPAPER?

The grit number indicates the size of the abrasive particles. The lower the number, the larger the abrasive particles. Select the grit size suitable to your project. Generally, choose a larger grit size and move to finer grade papers to refine the surface.



GRIT NO.	GRIT SIZE	APPLICATIONS	METHOD
36-100	Coarse	Good for heavy jobs. Use to strip off paint or varnish and to remove rust on metal. Provides a rough sanding and removes material quickly.	Works well with power sanders
100-180	Medium	Often a good starting grit size or used to further smooth after using a coarse grit. Use to prepare work for finishing. Can be used to provide key or tooth to smooth surfaces to enhance paint adhesion.	Suitable for hand or power sanding
180-320	Fine	Produces a refined, very smooth finish. Can be used lightly between finish coats.	Hand sanding

QUICK REFERENCE

WHICH SAFETY COLOUR?

Below is a guide to the use of colours for health and safety purposes in commercial and industrial environments. Post the colour code plan in use at your work place and ensure all employees are familiar with it.

COLOUR	CODE	PURPOSE	EXAMPLES: WHERE TO USE
Safety Blue		INFORMATION	Signage and to indicate important information; also equipment under repair.
Safety Green		SAFETY	Safe zones; first aid equipment
Safety Orange		WARNING	Danger present especially from machinery that can cause injury.
Safety Purple		RADIATION	To indicate areas where there is risk of exposure to radiation
Safety Red		DANGER/ FIRE	Dangerous/ hazardous areas; highly flammable materials; fire protection equipment, exits & alarms
Safety Yellow		PHYSICAL HAZARDS	Mark walk ways, steps, unguarded areas to avoid slips, trips and falls.

CONVERSION TABLES



Mass Units

Grams	Kilo-grams	Metric tonnes	Pounds	Ounces
g	kg	tonne	lb	oz
1	0.001	0.000001	0.002205	0.035273
1000	1	0.001	2.204586	35.27337
1000000	1000	1	2204.586	35273.37
453.6	0.4536	0.000454	1	16
28	0.02835	0.000028	0.0625	1

Volume Units

Metre cube	Liter	Inch cube	Foot cube	US gallons
m ³	ltr	in ³	ft ³	US gal
0.000001	0.001	0.061024	0.000035	0.000264
1	1000	61024	35	264
0.001	1	61	0.035	0.264201
0.000016	0.016387	1	0.000579	0.004329
0.028317	28.31685	1728	1	7.481333
0.003785	3.79	231	0.13	1

CONVERSION TABLES

Area

Square Metres	Square Inches	Square Feet	Square Yards	Square Centi-metres
1	1550	10.76	1.196	10000
0.036452	1	0.006944	0.037716	6.4516
0.09290	144	1	0.1111	929.0304
0.8361	1296	9	1	8361.274
0	0	0	0	1

Length Units

Milli-metres	Centi-metres	Metres	Inches	Feet	Yards
mm	cm	m	in	ft	oz
1	0.1	0.001	0.03937	0.003281	0.001094
10	1	0.01	0.393701	0.032808	0.010936
1000	100	1	39.37008	3.28084	1.093613
25.4	2.54	0.0254	1	0.083333	0.027778
304.8	30.48	0.3048	12	1	0.333333
914.4	91.44	0.9144	36	3	1

CONVERSION TABLES

Inches to Decimal Feet Conversion

Inches	Feet
1/8"	0.01'
1/4"	0.02'
3/8"	0.03'
1/2"	0.04'
5/8"	0.05'
3/4"	0.06'
7/8"	0.07'
1"	0.08'
1 1/8"	0.09'
1 1/4"	0.1'
1 3/8"	0.11'
1 1/2"	0.12'
1 5/8"	0.14'
1 3/4"	0.15'
1 7/8"	0.16'
2"	0.17'
2 1/8"	0.18'
2 1/4"	0.19'
2 3/8"	0.2'
2 1/2"	0.21'
2 5/8"	0.22'
2 3/4"	0.23'
2 7/8"	0.24'
3"	0.25'
3 1/8"	0.26'
3 1/4"	0.27'
3 3/8"	0.28'
3 1/2"	0.29'

Inches	Feet
3 5/8"	0.3'
3 3/4"	0.31'
3 7/8"	0.32
4"	0.33'
4 1/8"	0.34'
4 1/4"	0.35'
4 3/8"	0.36'
4 1/2"	0.37'
4 5/8"	0.39'
4 3/4"	0.4'
4 7/8"	0.41'
5"	0.42'
5 1/8"	0.43'
5 1/4"	0.44'
5 3/8"	0.45'
5 1/2"	0.46'
5 5/8"	0.47'
5 3/4"	0.48'
5 7/8"	0.49'
6"	0.5'
6 1/8"	0.51'
6 1/4"	0.52'
6 3/8"	0.53'
6 1/2"	0.54'
6 5/8"	0.55'
6 3/4"	0.56'
6 7/8"	0.57'

CONVERSION TABLES

Inches to Decimal Feet Conversion

Inches	Feet
7"	0.58'
7 1/8"	0.59'
7 1/4"	0.6'
7 3/8"	0.61'
7 1/2"	0.62'
7 5/8"	0.64'
7 3/4"	0.65'
7 7/8"	0.66'
8"	0.67'
8 1/8"	0.68'
8 1/4"	0.69'
8 3/8"	0.7'
8 1/2"	0.71'
8 5/8"	0.72'
8 3/4"	0.73'
8 7/8"	0.74'
9"	0.75'
9 1/8"	0.76'
9 1/4"	0.77'
9 3/8"	0.78'
9 1/2"	0.79'
9 5/8"	0.8'
9 3/4"	0.81'
9 7/8"	0.82'

Inches	Feet
10"	0.83'
10 1/8"	0.84'
10 1/4"	0.85'
10 3/8"	0.86'
10 1/2"	0.87'
10 5/8"	0.89'
10 3/4"	0.9'
10 7/8"	0.91'
11"	0.92'
11 1/8"	0.93'
11 1/4"	0.94'
11 3/8"	0.95'
11 1/2"	0.96'
11 5/8"	0.97'
11 3/4"	0.98'
11 7/8"	0.99'
12"	1.0'

Land Measurements Conversions

1 mile	11.61 kilometres
1 kilometre	0.6214 miles
1 metre	3.28 feet
1 foot	0.304 metres
1 yard	0.914 meters
1 metre	1.09 yards
1 square metre	10.76 sq. feet
1 square foot	0.093 sq. mts.
1 acre	43,560 sq. feet
1 acre	0.405 hectares
1 hectare	10,000 sq. mts.
1 hectare	2.47 acres
1 hectare	107,600 sq. feet
1 inch	2.54 centimeters

CONVERSION TABLES

Lumber Conversions

Nominal	Actual	Actual - Metric
1" x 2"	3/4" x 1-1/2"	19 x 38 mm
1" x 3"	3/4" x 2-1/2"	19 x 64 mm
1" x 4"	3/4" x 3-1/2"	19 x 89 mm
1" x 5"	3/4" x 4-1/2"	19 x 114 mm
1" x 6"	3/4" x 5-1/2"	19 x 140 mm
1" x 7"	3/4" x 6-1/4"	19 x 159 mm
1" x 8"	3/4" x 7-1/4"	19 x 184mm
1" x 10"	3/4" x 9-1/4"	19 x 235 mm
1" x 12"	3/4" x 11-1/4"	19 x 286 mm
1-1/4" x 4"	1" x 3-1/2"	25 x 89 mm
1-1/4" x 6"	1" x 5-1/2"	25 x 140 mm
1-1/4" x 8"	1" x 7-1/4"	25 x 184 mm
1-1/4" x 10"	1" x 9-1/4"	25 x 235 mm
1-1/4" x 12"	1-1/4" x 11-1/4"	25 x 286 mm
1-1/2" x 4"	1-1/4" x 3-1/2"	32 x 89 mm
1-1/2" x 6"	1-1/4" x 5-1/2"	32 x 140 mm
1-1/2" x 8"	1-1/4" x 7-1/4"	32 x 184 mm
1-1/2" x 10"	1-1/4" x 9-1/4"	32 x 235 mm
1-1/2" x 12"	1-1/4" x 11-1/4"	32 x 286 mm
2" x 4"	1-1/2" x 3-1/2"	38 x 89 mm
2" x 6"	1-1/2" x 5-1/2"	38 x 140 mm
2" x 8"	1-1/2" x 7-1/4"	38 x 184 mm
2" x 10"	1-1/2" x 9-1/4"	38 x 235 mm
2" x 12"	1-1/2" x 11-1/4"	38 x 286 mm
3" x 6"	2-1/2" x 5-1/2"	64 x 140 mm
4" x 4"	3-1/2" x 3-1/2"	89 x 89 mm
4" x 6"	3-1/2" x 5-1/2"	89 x 140 mm

NOTES

NOTES

NOTES



Tips or Ideas for our next issue?

Or simply share your comments with us.

Please contact us at marketing@harrispaintsonline.com

Contact Us

For more information, please contact us at marketing@harrispaintsonline.com or the location nearest you.

Barbados

Wildey, St. Michael
BB14006, Barbados
T: (246) 429-4840

Dominica

Canefield Industrial
Estate, Canefield,
Dominica
T: (767) 448-3011

Guyana

10 - 13 Water Street,
North Cummingsburg,
Georgetown, Guyana
T: (592) 226-5156

St. Lucia

Bois D' Orange, Gros Islet,
P.O. Box, GI 2095, Gros Islet
T: (758) 450-0727

Jamaica

10 Bell Road East
Kingston, Jamaica
T: (876) 923-7131

Product information can also be found on our website:
www.championsofcolour.com