



# INSPIRING

COLOUR 2021

THE BEST  
GREYS

Perfect undertones  
for beautiful greys

*get* THE  
LOOK

**OUTDOOR VIBES**

COLOUR  
your  
SPACE  
Colour  
Confidence

Discover the secret to getting  
it right every time

**INSTANT  
MAKEOVERS**

No time?  
No problem!

# CARIBBEAN Brights

Energizing, rich 'pops' of colour to lift spirits and create stand out looks!



## HARRIS PAINTS WELCOMES YOU TO *Inspiring Colour*



The COVID-19 pandemic has been challenging and we all crave a **fresh start**. Our design and colour directions reflect this **desire for renewal** and the environments that support this. For some of us it's **quiet, reflective spaces**, for others a **little flamboyance** is needed to lift the spirits. **In this issue**, you'll not only find the style that reflects your personality, but also practical guidance in choosing the best colours and combos to **bring your vision to life**.

While we tend to be instinctive when it comes to the styles we like, making those paint colour decisions for a project can be overwhelming for even the most confident decorator. In **Inspiring Colour**, we'll show you how to **decorate successfully with colour**; from understanding how colour theory can **help you combine colours**, to **style inspiration** and **decorating tips**. We hope that within these pages you'll find everything you need to **colour with confidence**.



# Introducing

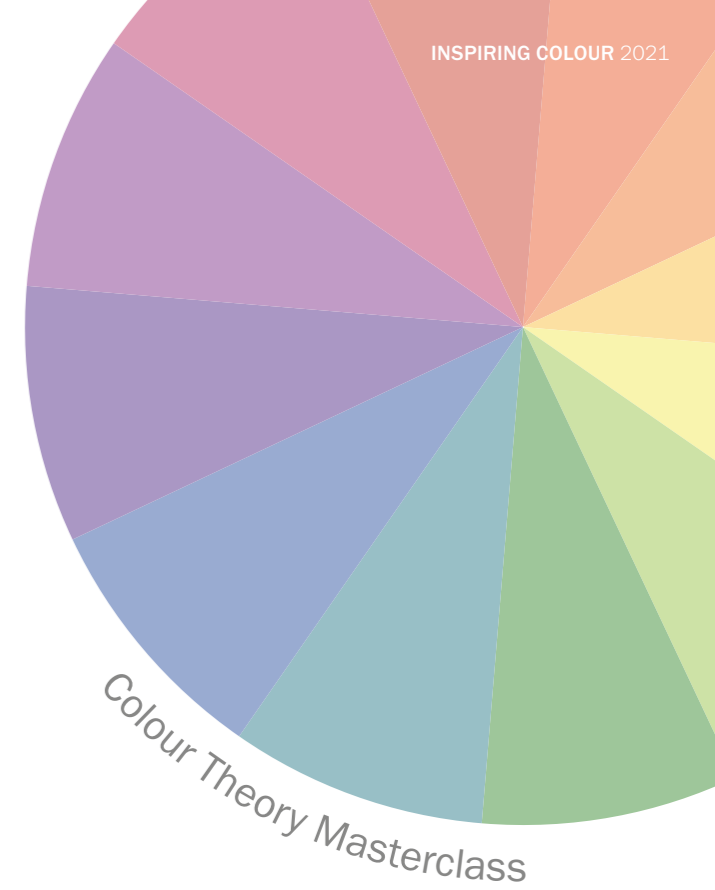
Beautiful colour inspiration for the year ahead.



© John Lewis

## BEAUTIFUL HARMONIES

From light reflecting neutrals to elegant midtones and immersive darks, there's a colour scheme to suit every style.



## WHICH GREY

The secret's in the undertone!

Become a colour expert with our colour harmony guide and discover the secret to getting it right every time.



## COOL SIDE

Outside is the new inside.

## TRENDS FOR 2021 and beyond

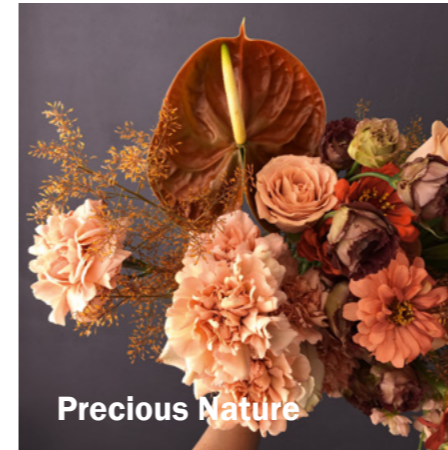
Create your dream home with inspiration from our new style and colour directions.



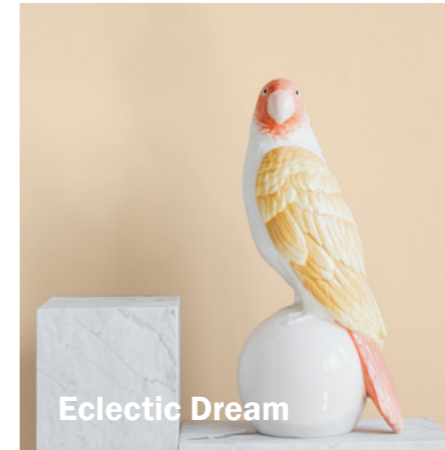
Tranquil Moment



Fresh Haven



Precious Nature



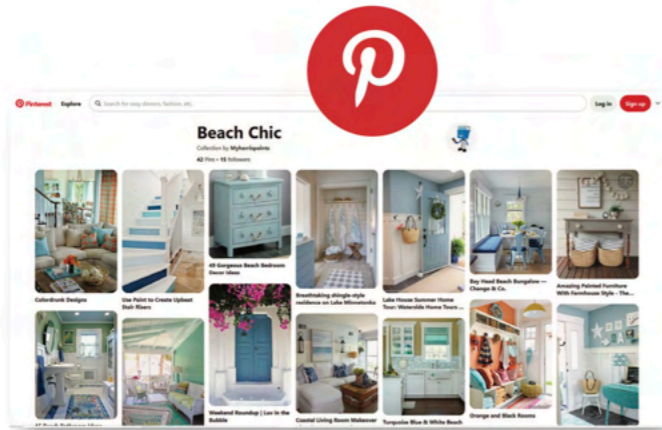
Eclectic Dream

# CHECK OUT OUR HANDY COLOUR TOOLS

Choosing colour is a personal journey and it's one that is best not rushed. Our experienced staff are always here if you need information, support or advice. We also have some cool tools and resources that will help you pin down those perfect colours and help you land the look you've been dreaming of.

## FIND INSPIRATION

There is no where like Pinterest to feast your eyes and get your creative juices flowing. And even better it's free! It's a great place to start if you are not sure what you're after. It can quickly help you sort out which ideas are most 'on target' for you. To help you we've done a little hunting of our own and organized Boards into useful categories full of decorating ideas, such as: Bedrooms, Kids Rooms, Small Spaces, Exteriors and lots more. Remember a creative spark can come from anywhere - it just might be here!



→ [pinterest.ca/myharrispaints/](https://pinterest.ca/myharrispaints/)

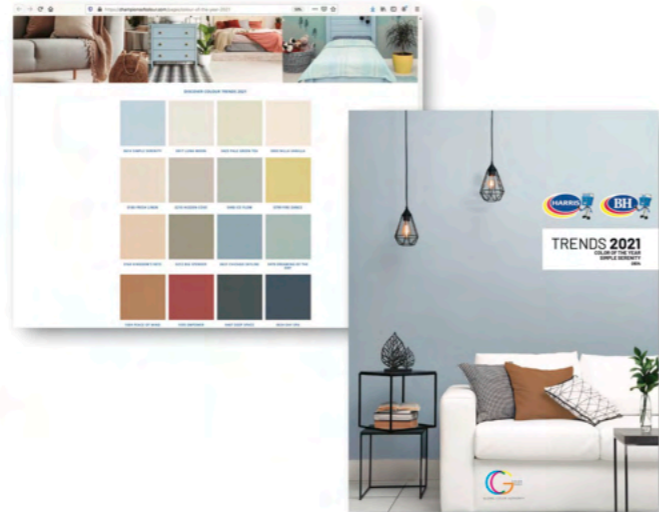
## EXPLORE COLLECTIONS & LATEST TRENDS

Want to discover the 2021 Trend Colour collection? Hop online to see all our colours and collections from the comfort of your own home.

→ [championsofcolour.com/pages/colour-of-the-year-2021](https://championsofcolour.com/pages/colour-of-the-year-2021)

From our colour page you can 'Explore All Colours' or browse a selection of smaller curated collections that each have a distinct personality. It can be a handy shortcut to find solutions that work for you, faster.

→ [championsofcolour.com/collections/explore-all-colours](https://championsofcolour.com/collections/explore-all-colours)



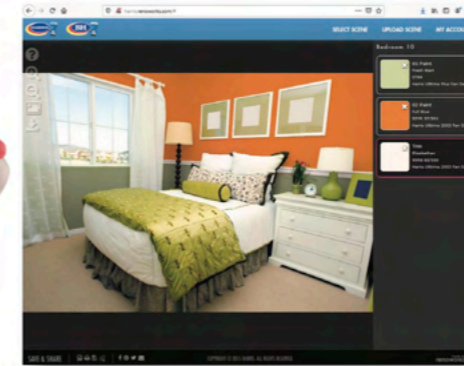
## GET THE PERFECT COMPANION COLOUR

A key to choosing the right colour is understanding how you want your room to feel. Our Ultima Plus Colour Display is uniquely designed to help you. You can easily locate your colour family (vertical) or select from four horizontal mood collections - Luxurious, Warm, Fresh or Calm. Choose the mood group that best fits the look you are trying to create or the one you are most drawn to. Each mood collection consists of a broad palette of colours that work well together as they share a number of tonal characteristics, which makes choosing perfect pairings a snap.



## PAINT A PHOTO

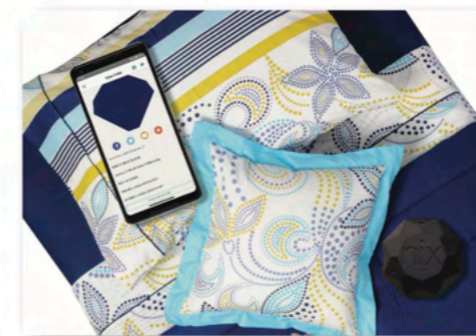
See what colours look like in a real-world context with our Colour Wiz Virtual Designer. Upload your own photos or use a collection of sample homes to create, save and share unlimited designs. Try out unexpected combinations! Note that digital colours may appear different on your device but it's easy to download a design report so that you can easily check colour chips in store before purchase.



→ [championsofcolour.com/pages/colorwiz-virtual-designer](https://championsofcolour.com/pages/colorwiz-virtual-designer)

## FIND A COLOUR MATCH

You might have found something, say a shirt, that is the perfect colour you are looking for or maybe you want the walls to match a colour in your cushions. How can you pin down that colour? Bring the item to be matched into the store and using our special colour reader we'll find the closest colour match.



# COLOUR THEORY

The colour wheel is an essential decorating tool. Use it to create a synergy between the colours you like and colours that harmonise with them.

## THE COLOUR WHEEL

### COOL COLOURS

The colours that appear beside blue, green and violet are cool. With associations to the sea, sky and sheltering foliage they can be used to good effect in rooms that call for relaxation and calm, such as bedrooms, bathrooms and workspaces. Cool colours are recessive and create an illusion of pushing back walls, thereby making a small room look larger. Use cool colours in sunny rooms to counterbalance the effects of direct sun light.



### WARM COLOURS

The colour wheel can be divided in half, with warm colours on one side and cool colours on the other. Reds, yellows and oranges are universally associated with the warmth of the sun and fire and naturally heat up a room. These colours are a good choice for kitchens, dining rooms, living rooms, and playrooms. Warm colours tend to 'advance' and can make rooms appear smaller, this makes them ideal for making larger spaces feel more cosy.

## COLOUR TERMS



### HUE

Hue is simply another word for colour. It is the quality that distinguishes one colour family from another.



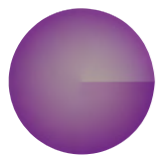
### TINT

A tint is a variation of any colour mixed with white and is therefore lighter than the original colour with low saturation.



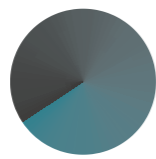
### UNDERTONE

The subtle underlying colour of a hue is its undertone. Olive Green is green with an undertone of yellow.



### SATURATION

Saturation refers to the relative intensity, brightness or purity of a colour in relation to grey. The most saturated colour is intense and pure with no grey added.



### SHADE

This is the result of adding black to any colour to create a darker version of the original colour.

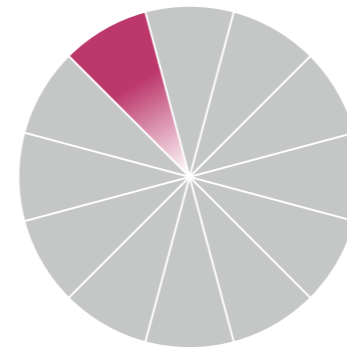


### tone

Tones are created by adding both black and white to a colour and are softer in appearance than a pure colour.

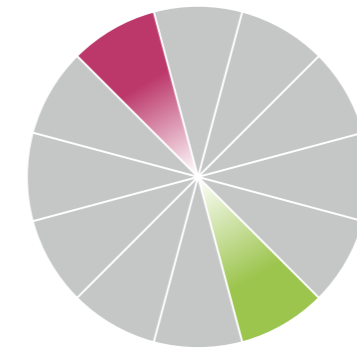
# COLOUR HARMONIES

Colour harmony helps you choose colours that will not only look good but that will feel good too. To achieve the best harmony, include the colours of your furnishings and accessories alongside your paint.



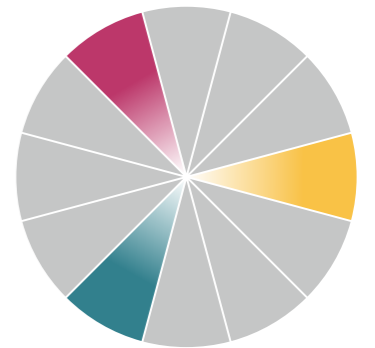
### MONOCHROMATIC

The simplest of harmonies, monochromatic schemes use various tints, tones and shades from the same hue.



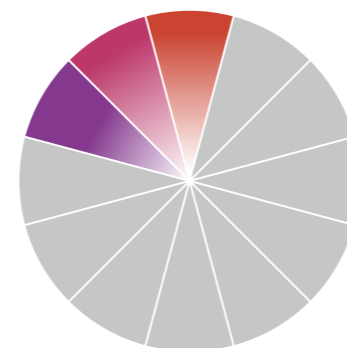
### COMPLEMENTARY

A complementary scheme uses colours that appear directly opposite or nearly opposite on the colour wheel.



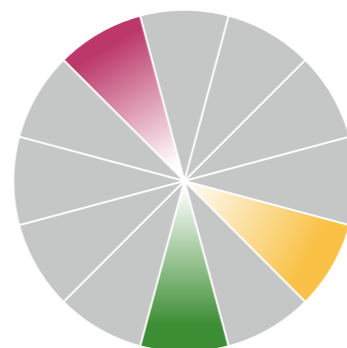
### TRIADIC

A triadic scheme includes any three equally spaced colours on the colour wheel.



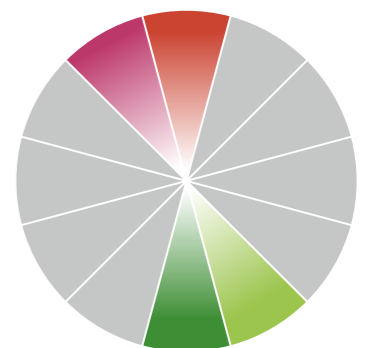
### ANALOGOUS

A blended scheme incorporating two or more colours that sit side by side on the colour wheel.



### SPLIT COMPLEMENT

A split-complementary combination is one colour paired with two colours on either side of the original colour's direct complement.



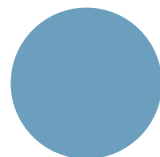
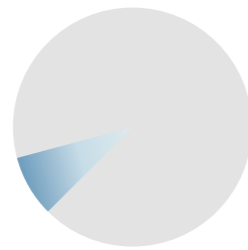
### DOUBLE COMPLEMENT

Double complementary harmonies feature two sets of complementary colours that sit next to and across from each other on the colour wheel.

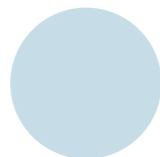
# COLOUR IN PRACTICE: HARMONIES

## MONOCHROMATIC

Subtle and sophisticated, a monochromatic scheme is a great way to bring interest into a small kitchen. Here, base cabinets in a white with a hint of blue harmonise with a mid-blue wall feature and a splash of a stronger blue as an accent to furniture.



Sea of Atlantis  
0653



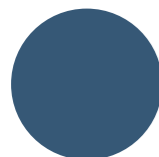
Bridgewater Bay  
0650



Divine Inspiration  
0649

## DOUBLE COMPLEMENT

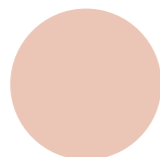
Once you recognise a complementary pair, you'll spot them everywhere in art and design. If this inspires you, a double complementary is a striking scheme for a simple four colour mural. Use decorator's tape for your design and make sure to let each layer dry before beginning the next.



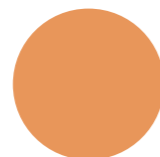
Happy Tune  
0648



Stillwater  
0687



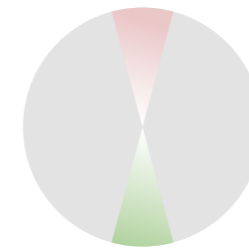
Weekend Retreat  
0035



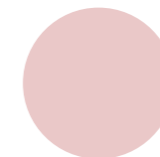
Heat of Summer  
1025

## COMPLEMENTARY

If an all-pink bedroom scheme feels too saccharine sweet, or you're looking to create a more grown-up mood, just bring in some green to complement the pink. Bed linen in fresh white and featuring both colours brings the whole scheme together.



Green Sheen  
0764



Fantastic Pink  
0076



## ANALOGOUS

Choosing colours that sit next to each other on a colour wheel is a stylish way to connect individual spaces. But there's one place in the home where the continued flow of an analogous group makes this harmony the perfect choice, and that's on painted stair treads or spindles.



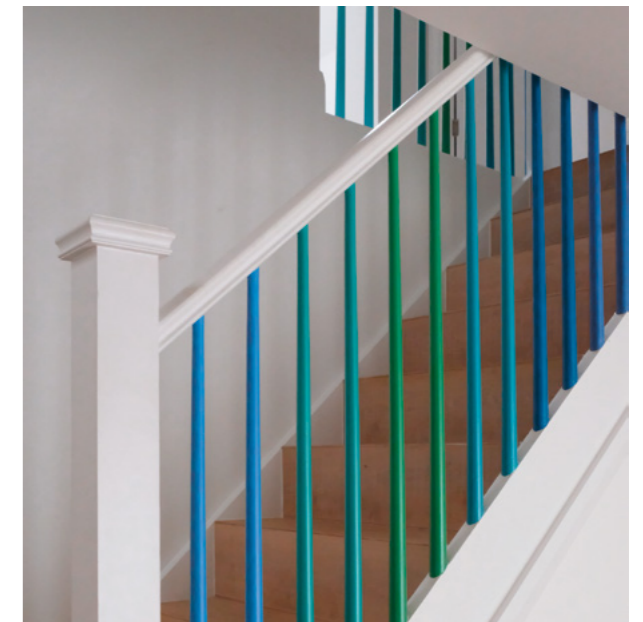
Skylla  
0640



Island Moment  
0695



Tropical Tale  
0717



# COLOUR IN PRACTICE: PROPORTIONS

## 60/30/10 FORMULA

60/30/10 is a simple guide to planning your colour proportions when you're decorating. This is especially helpful in kitchens where cabinets may be the most dominant feature.

60% Dominant colour of the space | 30% Complementing the dominant colour | 10% Accent colour to the space



Sidekick Media

Add definition to a predominantly white kitchen with an island and fittings in a dark grey and complementing appliances in chrome.

Barely White 0021 | Thunderstorm 0514 | Polished Chrome

Bring some personality to a mostly grey kitchen with the main wall space in a bold blue, and secondary walls in a soft white to match the countertops.

Fireplace Mantel 0569 | Wish Upon a Star 0668 | Elk Skin 0565



Make green the feature in a small kitchen by adding furniture that connects the cabinets to the seating area. Soft white walls and natural wood bring light and warmth.

Green Knoll 0760 | White Fence 0027 | Wood Grain



Light wood cabinets are a key direction for kitchens; bring balance with a clean white as a secondary proportion and a natural black as an accent.



Wood Grain | Twinkle Twinkle 0355 | Black Licorice 0529



# HARRIS COLOUR DESIGN

Great insights to help you make colour choices that are right for your home. No more stress! This is a game changer!

## FREE & FULLY REDEEMABLE PACKAGES!

\*Deposits redeemed with spend of \$250. (Barbados Dollars)

	ESSENTIALS	STYLIST	DESIGNER
LOCATION	Harris Colourcentre	Harris Colourcentre	At Your Home
DURATION	10-15 mins	30 mins	60 mins
COST	FREE	\$60*	\$120*
BEST FOR	Quick questions and direction	Discuss your project in detail	Highly tailored advice and makeovers
MEET OUR	Colour advisor	Lead colour advisor	Interior decorator
BOOKING	Optional	By appointment only	By appointment only

CURRENTLY AVAILABLE IN BARBADOS ONLY.

Whether your project is big or small, we can help you find the paint colours you'll love. We provide valuable guidance and useful tools to support the paint colour selection process and you decide!

**BOOK NOW: Tel. 234-2108**  
[colouredesign@harrispaintsonline.com](mailto:colouredesign@harrispaintsonline.com)



# HOW TO TEST COLOURS

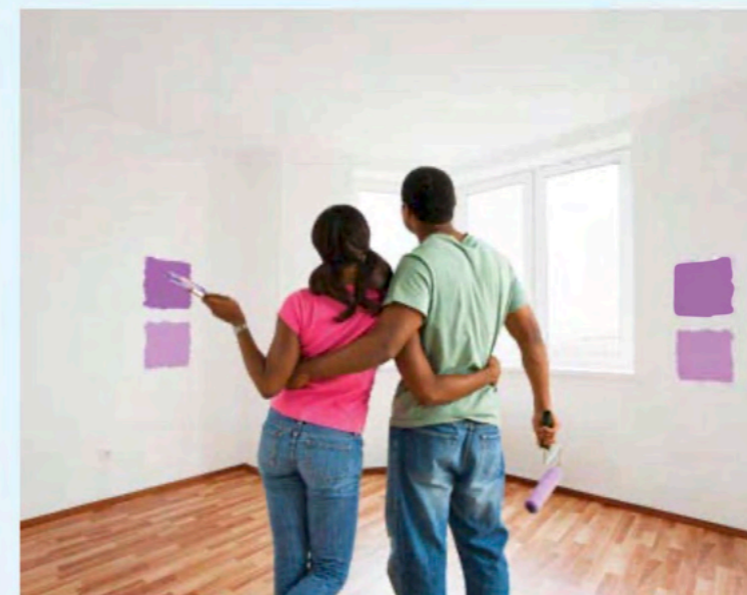
You've chosen the colour - you love it. Why should you bother to take the extra step to test it? If you are trying to understand what could possibly go wrong, here are three valuable reasons we highly recommend testing colours before you make your final purchase

1. Colours changes with the light and light changes throughout the day but also at night, depending on what artificial light sources you may be using. The colour you chose will have different appearances. In a few cases, usually with more complex colours, your 'ahhh' might turn to 'ugggh'.
2. Colours can also "shape-shift". In other words, when you put them next to other colours it brings out certain characteristics that you didn't notice before. Or alternatively, your bright new paint might make your existing colours look too drab.
3. The fact is - it's challenging to accurately imagine what the colour from a paint chip will look like on a large wall, even sometimes for designers!

Take a tip from the pros and test colours first.



## OUR STEP BY STEP GUIDE



- **Paint a square directly on the wall** at least 1ft square or bigger is better
- **Allow space between squares** when testing several colours at once.
- **Apply full coverage** - at least 2 coats to get true colour
- **Paint on multiple walls** - try in different locations - one wall that gets direct light and one in shadow and view at different times of day.
- **Optional** - can paint on card, which can be moved around the room and placed next to décor etc. to see how it coordinates.
- **Consider the effect of the current wall colour.** If testing colours that are dramatically different to the current wall colour, this could effect perception. Colors will appear darker against a light backdrop and lighter against a dark backdrop. If this is the case, it's a good idea to apply a neutral prime coat to minimize the effect, before testing.
- **For new build:** Best to test paint colour after lighting is installed



# WHICH GREY

Choosing the right grey can be overwhelming. A simple tip is to use your favourite colour as the undertone and you'll find your perfect match.

Thistle Gray  
0197

Whale Bone  
0203

Powder Cake  
0202

## SUNNY VIBES

If you're drawn to warm sunny colours opt for a grey with a yellow undertone. Perfect for light filled rooms and a natural partner to floors and worktops in pale stone and wood.

Sultry Castle  
0562

Cloudy Today  
0568

Sheepskin  
0566

## MELLOW MOOD

Classic and reassuring, the brown-hued greys found readily in nature are an ideal choice for social spaces. Enhance a welcoming atmosphere with accessories in a mix of natural textures.

## DARK DESIGNS

Enhance the warmth of a red undertone with soft pinks and light natural woods. Balance cooler blue and green cast greys with warm metals and complements of orange and red.

Greybeard  
0528

Tornado Wind  
0584

Smokescreen  
0556



Power Lunch  
0572

Rippled Rock  
0580

Fossilized  
0581

## OUTSIDE IN

If you're a nature lover and your home is filled with plants, a green cast grey creates a subtle backdrop. Explore the red complement to green with a balance of rich warm wood accessories.

# Tranquil Moment

Look to the quiet beauty of the world outdoors, and experience being at one with nature in your own home.

Tatiana Syrikova

## inspiration



Amid the hustle and bustle of everyday life, taking the time to pause and connect with the colours of nature can have a profound effect on our wellbeing. Here, soft earth and foliage tones blend seamlessly with gentle neutrals and natural materials to create environments to calm and reassure.



Plume Grass  
0414



Vegetarian  
0430



Apple Crisp  
0247



Mover and Shaker  
0158



Light Lichen  
0211



Dove White  
0018



Film Noir  
0144

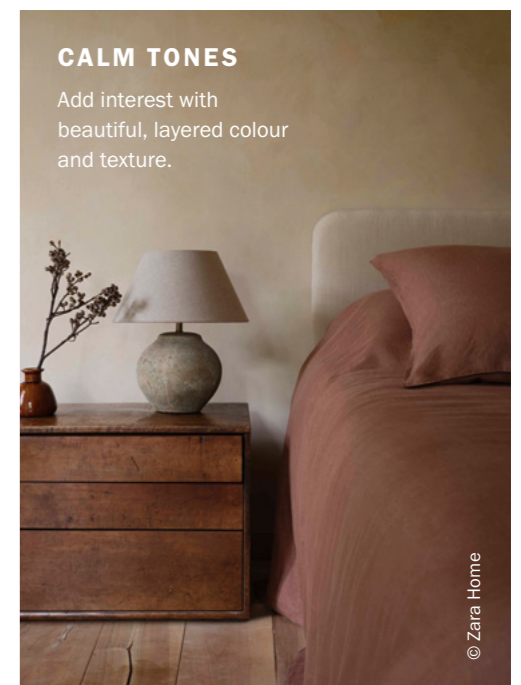
### NATURAL TOUCHES

Ceramic vases of dried flowers and seed heads bring timeless beauty.



### CALM TONES

Add interest with beautiful, layered colour and texture.



© Zara Home

# come inside....

From bleached and blackened wood to linens and dried grasses, explore natural textures and bring this neutral colour scheme to life.

## RELAXED DINING

Simple and stress free - a matt lacquered wood table and chairs with natural leather and atmospheric walls painted in **Light Lichen**.



Mater © Nest

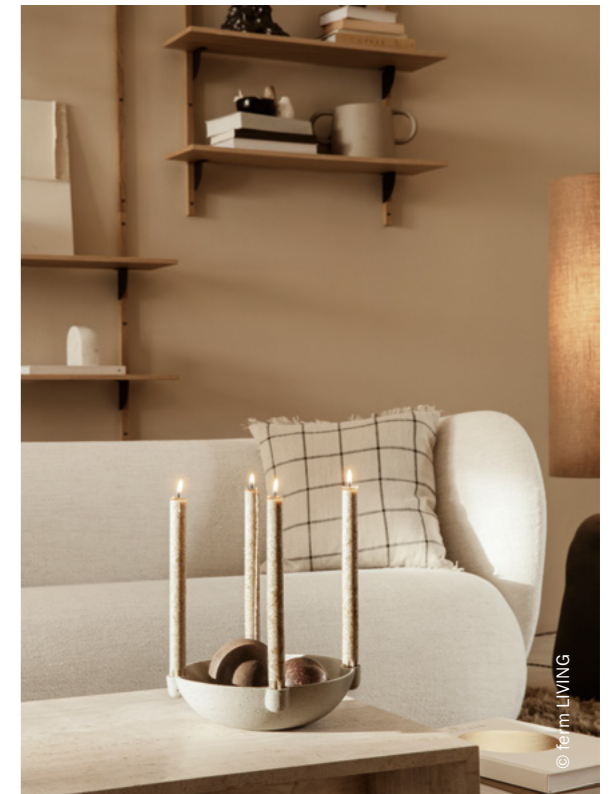
Light Lichen  
0211



## REST AND RESTORE

Create a soothing feature wall with deep brown **Mover and Shaker**, and trim with **Light Lichen** and soft **Dove White**. Enhance this restful mood with casual bedding in neutral linen and wool.

Dove White  
0018



## SIMPLE LINES

Bring a subtle structured contrast with paint trims in off-black **Film Noir** and add soft furnishings and accessories with fine monochrome details.



“  
*These subtle nature-  
 inspired tones are our  
 new favourite neutrals  
 for 2021.*”



**NATURALLY REFINED**

Natural doesn't need to be rugged or rustic. Add some refinement to a nature inspired bathroom with pale wood and bristle brushes, smooth stone and delicate handmade soaps.

Plume Grass  
0414



**FRESH GREENS**

Ideal for sunny spaces, the soft greyed green of **Plume Grass** has an easy neutral feel. Enhance with warm natural woods and indoor plants. For a fresh monochrome kitchen pair deep green **Vegetarian** with **Dove White**.



Vegetarian  
0430

Jodie Johnson Photography



**HOME SPA**

Relaxed warm tones, smoked glass and botanical touches complete a home spa experience. Get the look with wall in soft earth **Apple Crisp** and pair with **Vegetarian**, then simply add candlelight and relax.

© Zata Home



Clear your mind, and cast your cares away with the mood lifting feel of calm seas and open skies.

# Fresh Haven

Jeremy Bishop



Quiet Peace  
0592



Blue Depths  
0626



Smoky Wings  
0553



Singing in the Rain  
0478



Polished Cotton  
0629



Marble Pink  
0057

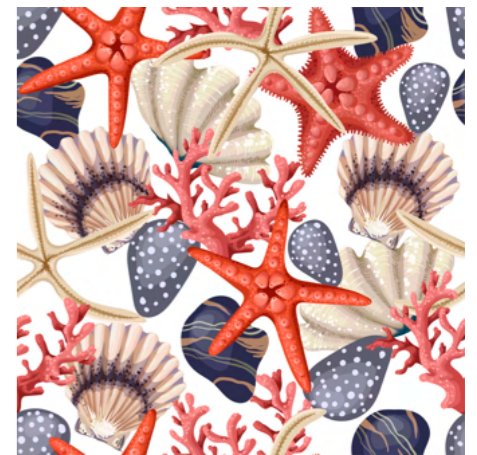


Always Neutral  
0559



## inspiration

Imagine the tingle of sea breeze on your skin, an uninterrupted view of an endless blue horizon and the calm of being between the sea and the sky. Here, we capture that emotion in a series of natural blues, easy neutrals and a soft sun-bleached red.



### TINY TOUCHES

With this cool blue and neutral tonal palette, these tiny accents of warmth in colour and pattern add definition and bring the colour scheme together.

# come inside...



Always Neutral  
0559



The hardworking neutral **Smoky Wings** is ideal for keeping busy family areas looking smart. At the end of the day, head to a relaxing bathroom in all-over **Polished Cotton** to unwind.



“  
Find the perfect neutral  
and make your feature  
colour shine.”

## VERSATILE RED

The soft red of **Marble Pink** brings a cheerful accent to wooden chairs in a sunny farmhouse style kitchen in **Always Neutral**. It also makes a beautiful all-over colour for a relaxing bedroom; style it with neutral and natural bed linens and pillows.



Marble Pink  
0057

**CAPTURE YOUR MOOD**

For light filled bedrooms, **Always Neutral** is timeless, while the deep blue of **Quiet Peace** is the perfect hue to lull your little one to sleep. Subtle grey-green **Singing in the Rain** is an effortlessly stylish colour for any living space, and your neutral kitchen will thank you for an accent of calm **Blue Depth**.



PIGLET

**BOHO BLISS**

Style up a light boho bedroom with natural cotton or luxury stonewashed linen bedding.



Singing in the Rain  
0478



© The Way We Live - London

**TRUE BLUE**

Eclectic pieces can bring your bathroom alive with colour and pattern. Here we feature a blue and white porcelain basin.



Quiet Peace  
0592



Aleksandar Novoselski

# Precious Nature



Welcome a little indulgence back into your life and immerse yourself in the beauty of the most precious elements of nature.

Secret Garden



Parlor Rose  
0060



Sweet Baby Rose  
1067



Canter Peach  
1015



Baby Sprout  
0134



Victorian Violet  
1305



Child of the Moon  
0914



Purple Shadow  
1215

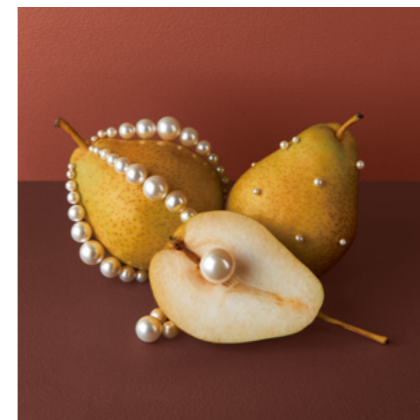


## *inspiration*

If your dream home is sublimely elegant and effortlessly luxurious, look no further than this nature inspired colour palette. Designed for immersive layering of colour; cool smoky purples, rich warmth and a whisper soft shell hue are all the elements you need.

### GILDED GLAMOUR

Bring some gold into your bedroom to create a sense of grandeur and luxury.



### CLASSIC TOUCHES

Antique and contemporary elements work beautifully together when they share a timeless appeal. Enhance both the decor and ambience of your space with scented candles in gilded coloured glass jars.



Beobab Collection Photo © AMARA



*come inside...*



Nathan Van Egmond

“  
*Start with a single rich hue and build an opulent mood with print, pattern and statement accessories.*”

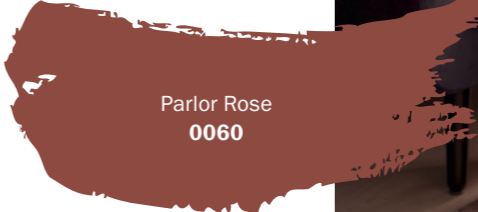


Sweet Baby Rose  
1067

© Sweetpea & Willow

**ALL THE ROSES**

Layer up the warmth with walls in **Sweet Baby Rose** and **Parlor Rose**. Add pillows and throws to complement or contrast in smoky purples and cool greys.



Parlor Rose  
0060



© John Lewis

**BRING IT TOGETHER**

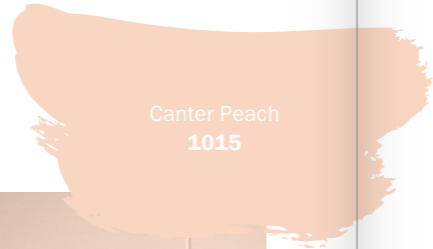
Patterned wallcoverings call for the perfect paint harmony. Use the darkest shade of the print for woodwork and decorate adjoining rooms with all-over walls painted in the main print hue.



Baby Sprout  
0134

**SUBTLE STATEMENT**

There's a timeless elegance to the more restrained colours of the Precious Nature collection. **Baby Sprout**, a warm mid-tone neutral is a perfectly subtle backdrop for feminine touches of pink and rosy gold tones in bedrooms. For a soft but contemporary mood, pair the uplifting colour **Canter Peach** with modern furnishings in cool grey and white.



Canter Peach  
1015



**SMOKY MOOD**

Nothing says luxury quite like the perfect shade of smoky purple. Designed to work in tonal harmony, the inky depth of **Purple Shadow** lives up to its name, with **Victorian Violet** bringing a contrasting lightness.

In colour theory, purple and yellow are complementary colours, so here, antique golden tones are the ideal harmony to these shaded violets both as an upholstery colour and in metal fixtures and fittings.



Victorian Violet  
1305



**SOFT SCANDI**

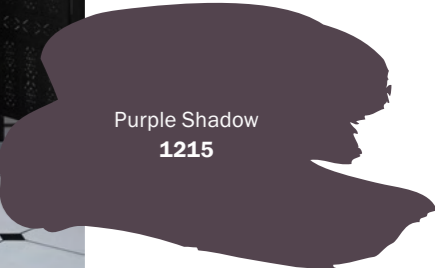
Be inspired by classic Scandinavian styling. Decorate with clean lines and incorporate natural materials.



James Terry

**LUXURY BATHING**

Perfect your period style bathroom with walls in **Purple Shadow** and crisp black and white monochrome tiles and trim.



Purple Shadow  
1215

# ECLECTIC Dream

Let your imagination run free and bring a touch of playfulness into your space.



Karolina Grabowska



### CONFIDENT COMPLEMENTS

Lilac and yellow are a perfect complementary pair.



© Montana Furniture

### TALKING PIECES

Conversational decorative touches bring colour and personality to your scheme.



© &M/everying

## INSPIRATION

We all need a little fun, and whether it's entertaining family and friends or simply finding those moments of delight for yourself, it's something we've all been missing. So, here we've designed a story to lift the spirits. Put a smile on everyone's face with easy neutrals, on trend pastels and natural greens that come together in a mood boosting palette that's deceptively simple to use.



Arizona Stone  
0697



Enchanted Evening  
0673



Deco Pink  
1141



Odyssey Lilac  
1218



Coin Purse  
0896



Lemon Poppy  
0927



Rain Boots  
0802

“  
 Transform your home  
 from tired to inspired  
 with gorgeous uplifting  
 colours that call  
 for celebration.”



Luciano Spinelii



© TOM TAILOR

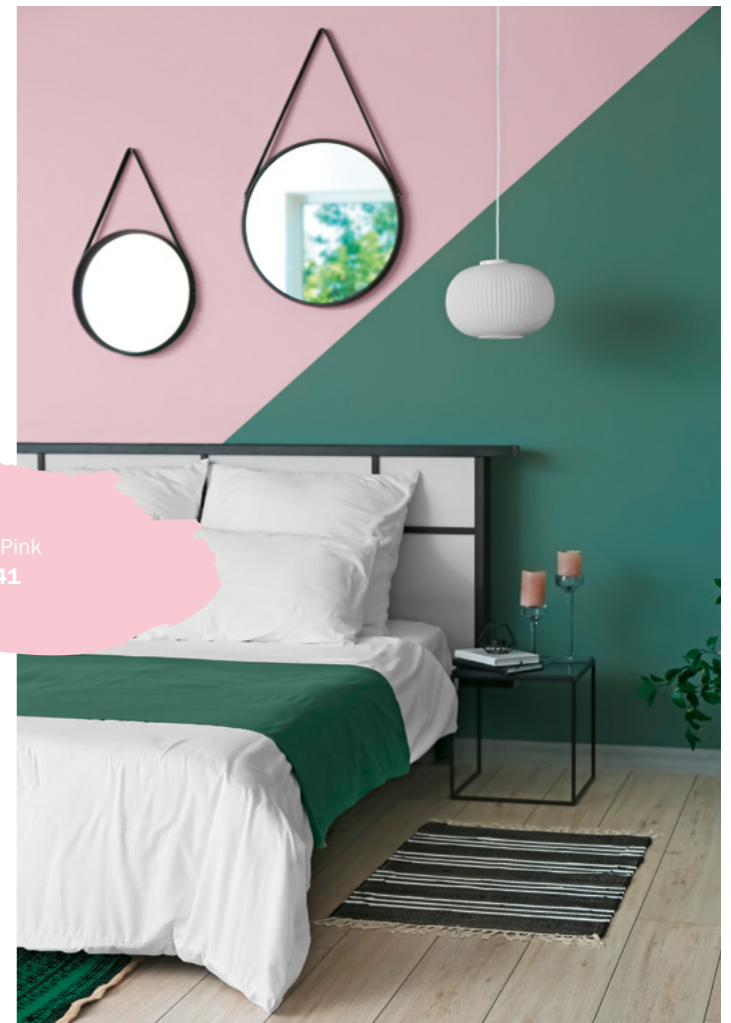
Lemon Poppy  
0927

Perfect a bold colour statement with a neutral touch. Define a dynamic complementary pair of **Deco Pink** and green **Arizona Stone** with accents of black and white or bring a softening tonal balance to the vibrance of **Lemon Poppy** by adding a lighter, yellow based neutral.

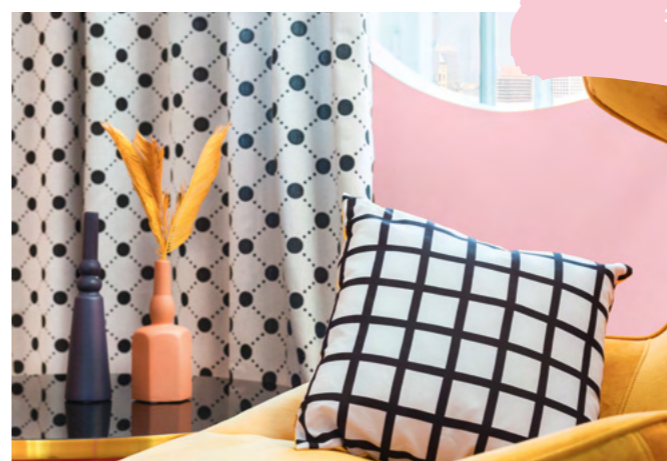
**MELLOW YELLOW**

# COME INSIDE...

With the help of our guide to Colour Theory you'll discover how decorating with bold colours is simpler than you imagined!



Deco Pink  
1141



**COLOUR CONVERSATIONS**

Create a statement by coordinating occasional furniture with lively wallcoverings or other textiles.

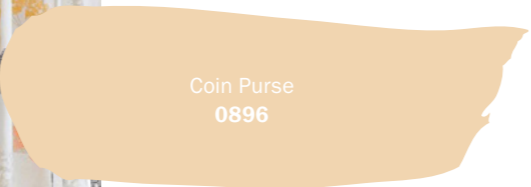


Catherine Rowe Designs  
Photo © Charlton Island



**LIVELY NEUTRALS**

Neutral coloured furnishings give the freedom to explore new possibilities in paint colour. Here, a gentle combination of complementary **Odyssey Lilac** and **Coin Purse** adds a touch of personality to a relaxed bedroom mood.



Coin Purse  
0896

**CONNECTING COLOURS**

Painted furniture is a flexible way to bring colour into your room and is easy to change when you want a refresh. **Coin Purse** cabinetry connects the lighter wall and deeper toned furnishings in this light and cheery room.

For a bolder look, paint woods in a colour featured in your upholstery, drapes or floorcovering, then add small accessories to bring the look together.



Warm Nordic  
Photo © Nest

**HOMELY ACCENTS**

For a beautiful, homely feel, the natural yellow-green of **Rain Boots** brings a lovely mellow accent to a warm neutral scheme.





# HARRIS ULTIMA PLUS PURE

CERTIFIED ENVIRONMENTALLY FRIENDLY  
ZERO VOC INTERIOR PAINT



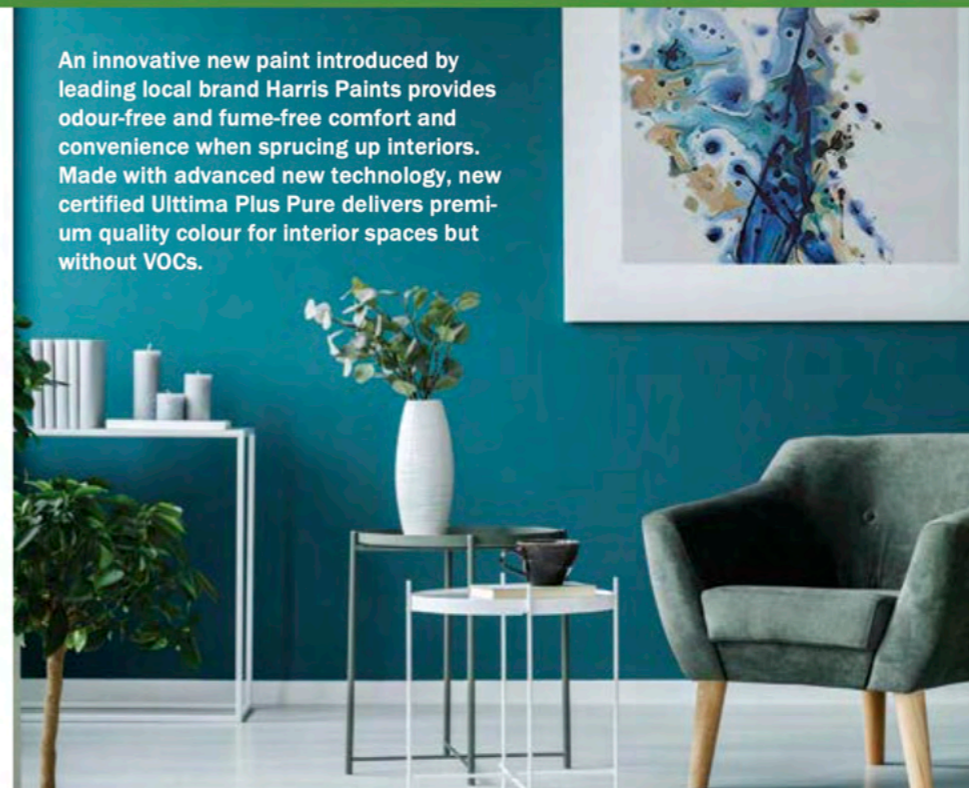
- ✓ SAFE & ODOUR FREE
- ✓ ALLERGY & ASTHMA FRIENDLY
- ✓ BEST INDOOR AIR QUALITY

Available in Flat and Eggshell finishes

For more information visit [championsofcolour.com](http://championsofcolour.com)

## HARRIS'S NEW AWARD-WINNING, NO-ODOUR PAINT PROTECTS HEALTH

An innovative new paint introduced by leading local brand Harris Paints provides odour-free and fume-free comfort and convenience when sprucing up interiors. Made with advanced new technology, new certified Ultima Plus Pure delivers premium quality colour for interior spaces but without VOCs.



One of the first customers, Lani Edghill of Ecologic Consulting and Green Business Barbados Developer, used the paint to renovate new offices for the Future Centre Trust.

*"All my life I have been very sensitive to chemicals", explained Lani. "I was working and attending Bowspring yoga classes when the building was being painted inside with Harris Ultima Plus Pure Zero VOC paint. I got to see and smell the paint up close and personal, literally! It felt so good to be able to still be in the space and not be affected even though the floor and walls had only been painted a few days before in the room I was using and painting continued in the room outside the space I was using!"*

### Never heard of a VOC? We break down the benefits for you.

The traditional smell of new paint can linger from 1-2 days or weeks depending on the type of paint used and the ventilation available and it can affect the health of those with sensitive respiratory conditions. That's why contractors often need to build in down-time before spaces can be safely reoccupied. This undesirable effect is caused by chemical components that are called 'volatile organic compounds' or VOCs.

Many everyday consumer and hardware products such as new furniture, carpet, adhesives, household cleaners and even hairspray contain VOCs which dissipate into the atmosphere. However, VOCs can become trapped in indoor environments and build up to levels that can trigger health conditions such as allergies or respiratory difficulties.

Harris Paints is the first regional paint supplier to introduce VOC-free interior paints which can be tinted to virtually any colour with VOC-free colourants.

### Internationally Certified Clean Air Formula

Ultima Plus Pure has been internationally tested by an accredited US laboratory and awarded the Green Wise certification, which is the highest available rating for paint safety.

Made with advanced ecologic resins it is an excellent option for individuals that may have weak or vulnerable systems including asthma and allergy sufferers, newborns, infants and the elderly. It is also ideal for hotels, offices and other institutional buildings that need to be refreshed and reoccupied quickly while maintaining the highest regard for public safety.

Ultima Plus Pure is available in two high quality, easy to use finishes - Flat and Eggshell (low sheen) - and is available from leading retailers.



Protects your family and the planet.



# MAGIC MAKEOVERS

Whether you have a whole weekend free, or even just a couple of hours, a splash of paint is the easiest and most cost friendly way for anyone to transform a space.



### TREND ALERT

The trend for coloured woodwork as a feature makes an ideal weekend project for older children and teens. Simply choose your favourite colour from existing bedding or wall art as inspiration. Painting doors, closets, shelves, wooden desks and chairs in a single hue brings the whole room together.

Pout  
0125

### CRAFTY KIDS



Primrose Path  
0938

Seashell Pink  
1126

Orleans Tune  
0658

Sweetness  
0765

Kids love to put their personality into their own bedrooms, but you might not want to let them loose on a whole wall just yet. A great mini project is to take a set of inexpensive wooden house shelves and let your little ones get creative with your leftover house paints.



Melbourne  
0725

### INSTANT UPDATE

If you're tired of your blank white walls but short on time, a feature inspired by period dado rails could be the makeover for you. Use decorator's tape to create a straight line just above the height of your chair backs before you paint a fresh solid colour in the lower section.



A complete range of custom tinted, premium paints.  
**BEAUTIFUL FINISH. SMART CHOICE.**



**BRIGHTER COLOURS WITH STRONGER FADE RESISTANCE**

ULTIMA PLUS with COLOURLAST TECHNOLOGY™ has been specially designed to withstand the harsh rays of the Caribbean sun. Formulated with UV absorbing extender pigments and tinted with high-performance colorants, ULTIMA PLUS will look brighter and last longer than conventional paints, so you don't have to repaint as often.



**LONGER TERM PROTECTION FROM FUNGUS AND MOLD**

ULTIMA PLUS with MILDEWGUARD TECHNOLOGY™ has been formulated with unique micro-encapsulated biocides designed to release slowly over the life of the coating. Unlike most paints that lose their anti-mildew effectiveness within six months, ULTIMA PLUS will resist the growth of fungus and algae for much longer.



**NO PRIMER REQUIRED OVER MOST SURFACES**

ULTIMA PLUS with SELFPRIME TECHNOLOGY™ uses innovative cross-linking acrylic resins that allow it to bond to and seal many surfaces without priming first. Unless you need to paint chalky, glossy, metal or heavily-stained surfaces, paint directly with ULTIMA PLUS and save yourself a coat of paint – and your time and money.



**EXTREMELY LOW ODOUR AND BETTER AIR QUALITY**

ULTIMA PLUS with EASYBREATHE TECHNOLOGY™ was formulated with your health and your environment in mind. Containing the lowest possible amounts of harmful volatile organic compounds (VOCs), and tinted with Zero-VOC colourants, ULTIMA PLUS lets you paint occupied spaces without worry.



**SUPERIOR COVERAGE AND EASIER APPLICATION**

ULTIMA PLUS with COVERFAST TECHNOLOGY™ is a spatter-free paint made with a very high pigment concentration. When tinted with its powerful colourants, the result is better opacity, coverage and hide. This means that ULTIMA PLUS will take you less coats to reach full coverage, so you get the job done faster, using less paint.

**CERTIFIED TO BE ECO-FRIENDLY**

The Green Wise mark indicates that products are environmentally preferred. It assures customers that products have been tested and do not contain certain chemicals that can be harmful to humans and the environment. The Green Wise Certification is awarded in accordance to stringent standards by the Coatings Research Group Inc. an independent, international testing facility. [greenwisepaint.com](http://greenwisepaint.com)







**SMALL IS BEAUTIFUL**

For a perfect day-to-evening atmosphere try complementing statement garden furniture with a tonal or matching wall colour. Even the smallest outside space becomes a retreat with privacy fencing in a natural off-black. Add contrasting furniture and decorative touches in lighter coloured materials for a contemporary mood.



Handwoven cushions by Lene Bjerre

Lene Bjerre Sweetpea & Willow

From a simple porch to the smallest balcony, anyone can make an outside space a retreat. We've created a beautiful cooling nature inspired colour palette to offset the glare of the sun, and we don't think you'll ever want to go back inside!



# Cool Side

“  
*With many of us socialising more outside, it's time to treat your exterior spaces to a makeover.*”



**BE BOLD**

High contrast never looked so good. It's the green foliage and natural wood elements that bring a welcoming finish to a dramatic black and white scheme. For a softer look, try this deep natural green with off-white trim.





Alina Hvostikova  
hvostikova.com



© John Lewis  
johnlewis.com



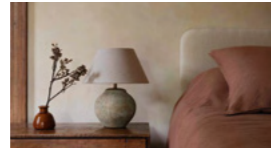
Sidekix Media



Minh Pham



Tatiana Syrikova



© Zara Home  
zarahome.com



Mater © Nest  
nest.co.uk



© ferm LIVING  
fermliving.com



Jodie Johnson Photography  
jodiejohnson.com.au



© Zara Home  
zarahome.com



Jeremy Bishop



© PIGLET  
pigletinbed.com



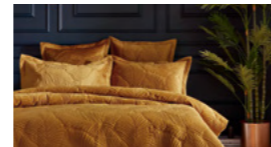
© The Way We Live London  
thewaywelive.com



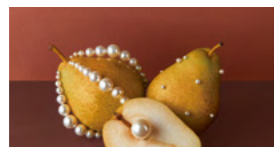
Aleksandar Novoselski  
novoselski.com



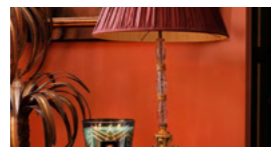
Secret Garden



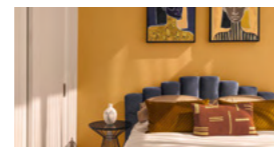
© The French Bedroom Company  
frenchbedroomcompany.co.uk



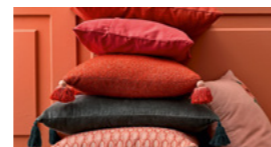
MIX Images © Colour Hive  
colourhive.com



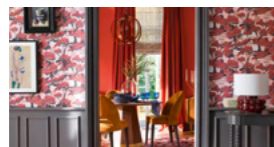
Baobab Collection © AMARA  
amara.com



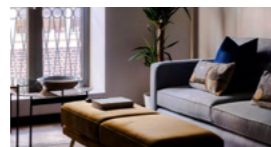
Nathan Van Egmond



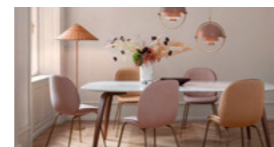
© Sweetpea & Willow  
sweetpeaandwillow.com



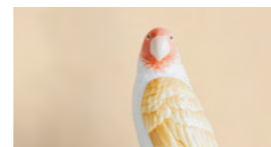
© John Lewis  
johnlewis.com



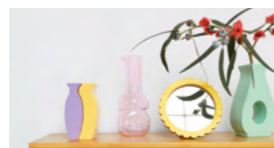
James Tarry  
jamestarryphotography.com



© Chaplins Furniture  
chaplins.co.uk



Karolina Grabowska



© &klevering  
klevering.com



© Montana Furniture  
montanafurniture.com



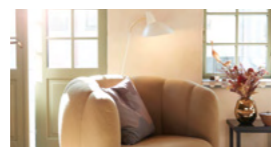
Luciano Spinelli  
lucianospinelli.com



© TOM TAILOR



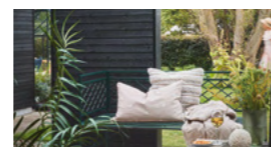
Catherine Rowe Designs  
© Charlton Island  
charltonisland.com



Warm Nordic © Nest  
nest.co.uk



Cath Kidston © The French  
Bedroom Company  
frenchbedroomcompany.co.uk



Lene Bjerre  
© Sweetpea & Willow  
sweetpeaandwillow.com



## COLOURCENTRE STORE HOURS & CONTACTS

### BARBADOS

#### WILDEY

Store Hours:  
Mon-Fri. 7.30am – 4.30pm  
Sat 8.00am – 2.30pm  
Telephone: 429-4840 or  
Cell/Whatsapp: 231-9505

#### SIX ROADS

Store Hours:  
Mon-Fri. 8.00am – 5.00pm  
Sat 8.00am – 2.30pm  
Telephone: 423-3320/ 40 or  
Cell/Whatsapp: 233-2487

#### FITTS VILLAGE

Store Hours:  
Mon-Fri. 8.00am – 5.00pm  
Sat 8.00am – 2.30pm  
Telephone: 417-5459 or  
Cell/Whatsapp: 232-6064

### ST. LUCIA

#### BOIS D'ORANGE

Store Hours:  
Mon-Fri. 8.00am-4.30pm  
Sat. 8.00am- 12.00pm  
Telephone: 450-0727  
Cell/Whatsapp: 722-3277

#### MARISULE

Store Hours:  
Mon-Fri. 8.00am-4.30pm  
Sat. 8.00am- 12.00pm  
Telephone: 450-4791  
Cell/Whatsapp: 724-5590

#### COLOUR WORLD OF PAINTS, CASTRIES

Store Hours:  
Mon-Fri. 8.00am-4.30pm  
Sat. 8.00am- 12.00pm  
Telephone: 453-1606  
Cell/Whatsapp: 724-5590

### GUYANA

#### WATER STREET

Store Hours:  
Mon-Fri. 8.00am – 4.30pm  
Sat 8.00am – 12.00pm  
Telephone: 225-5630  
Cell/Whatsapp: 640-3420

#### REGENT STREET

Store Hours:  
Mon-Fri. 8.00am – 4.30pm  
Sat 8.00am – 12.00pm  
Telephone:231-9791  
Cell/Whatsapp: 640-4350

#### DIAMOND STORE

Store Hours:  
Everyday. 8.00am – 4.30pm  
Except Wed. 8.00am – 12.00pm  
Sun. Closed  
Telephone:216-1848  
Cell/Whatsapp: 640-4350

### DOMINICA

#### CANEFIELD

Store Hours:  
Mon-Fri. 8.00am – 4.00pm  
Sat. Closed  
Telephone: 448-3000  
Cell/ Whatsapp 617-3000

#### PORTSMOUTH

Store Hours:  
Mon-Fri. 8.00am – 4.00pm  
Sat. Closed  
Telephone: 275-3949

### JAMAICA

See our BH Paints stores  
at [championsofcolour.com](http://championsofcolour.com)

DELIVERY, CURBSIDE, PICK-UP OR IN-STORE!

HARRIS PAINTS ARE ALSO AVAILABLE  
AT SELECTED RETAILERS

[WWW.CHAMPIONSOFCOLOUR.COM](http://WWW.CHAMPIONSOFCOLOUR.COM)



PAINT COLOURS  
BROUGHT TO YOU BY



GLOBAL COLOR AUTHORITY

