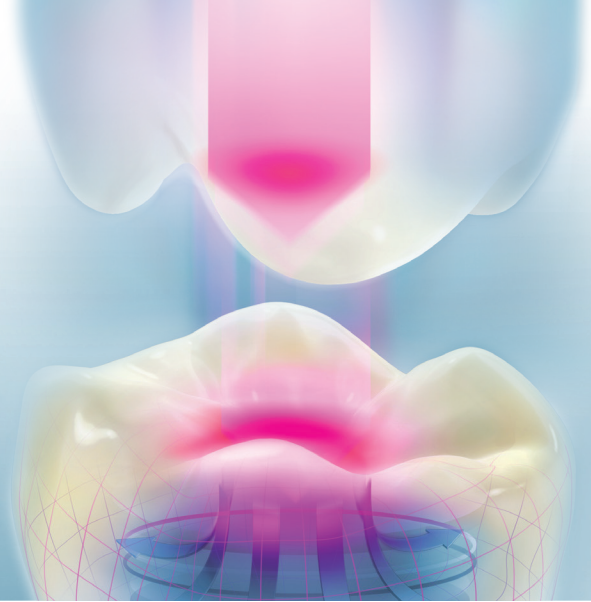
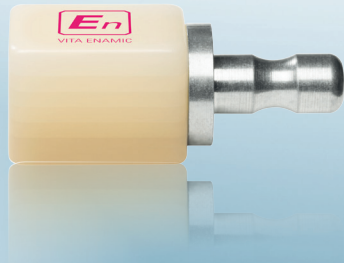


# > VITA ENAMIC® multiColor

> CAD/CAM block made of ceramic and polymer



## > VITA ENAMIC® multiColor

- Dual-network ceramic with a six-layer shade gradient for the reproduction of natural shades at the push of a button
- Integrated shade gradient with smooth transition from cervical to incisal
- Natural play of light for lifelike vitality
- Fast milling with no post-firing required; simply mill, polish and place
- Proven force absorption for long-lasting results

## > Specifications

- Shades: 1M1-HT, 1M2-HT, 2M2-HT, 3M2-HT, 4M2-HT
- Size: 12 x 14 x 18 mm



## > Primary Indications

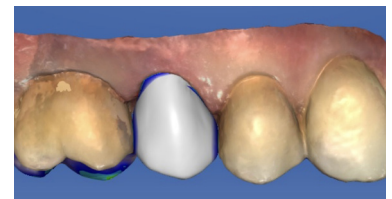
- Anterior and posterior crowns
- Implant restorations
- Veneers

## > System Compatibility / Mandrels

- CEREC / inLab
- PlanMill
- Ceramill Motion 2
- Universal



Before

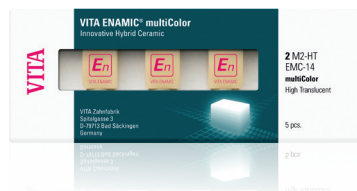


After

VITA ENAMIC multiColor on tooth #4  
Dr. Daniel Vasquez



**VITA ENAMIC®**  
Polishing instruments



**VITA ENAMIC® STAINS**  
Characterization



**VITAVM® LC**  
Individualization