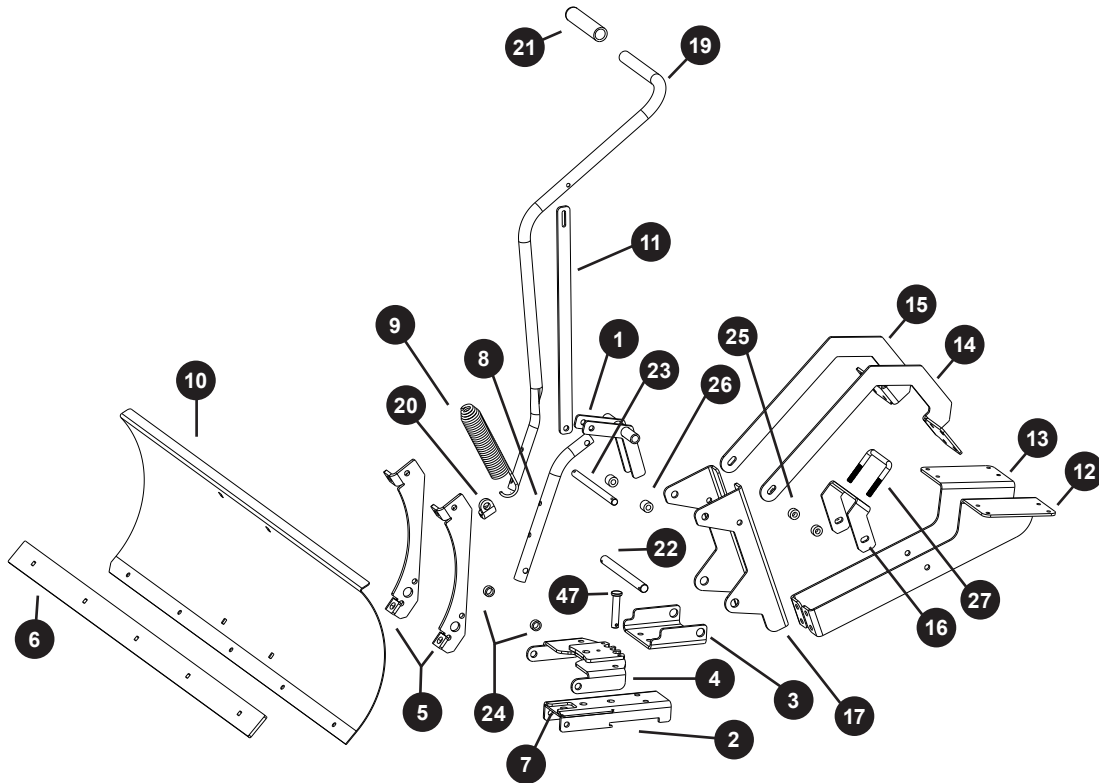


PARTS LIST AND REFERENCE

EXPLODED VIEW



REF	PART NO.	DESCRIPTION	QTY	REF	PART NO.	DESCRIPTION	QTY
1	1018106-10	Cam Weldment	1	11	1020567-10	Handle Plate	1
2	1018109-10	Lower Pivot Bracket	1	12	1020422L-10	Left Mounting Arm	1
3	1018110-10	Upper Pivot Bracket	1	13	1020422R-10	Right Mounting Arm	1
4	1018111-10	Hinge Weldment	1	14	1020423L-10	Left Support Arm	1
5	1018116-10	Ribs	2	15	1020423R-10	Right Support Arm	1
6	1018118-10	Wear Bar, 42"	1	16	1020424-10	Support Bracket	1
7	1018119-10	Bottom Plate	1	17	1020425-10	Mounting Bracket	1
8	1018120-10	Riser Tube	1	18	1020429	Hardware Pack*	1
9	1018121	Trip Spring	1	19	1020436-10	Lift Handle	1
10	1018347	Blade, 42"	1	20	B-7215-10	Spring Bracket	1

* Not shown



Tools Required for Assembly:

- 7/16" Socket & Wrench
- 1/2" Socket & Wrench
- 9/16" Socket & Wrench
- 3/4" Socket & Wrench
- Ratchet Wrench
- Pliers
- Gloves

HARDWARE IDENTIFIER

Illustrations on this page are to scale for faster identification of hardware during assembly.

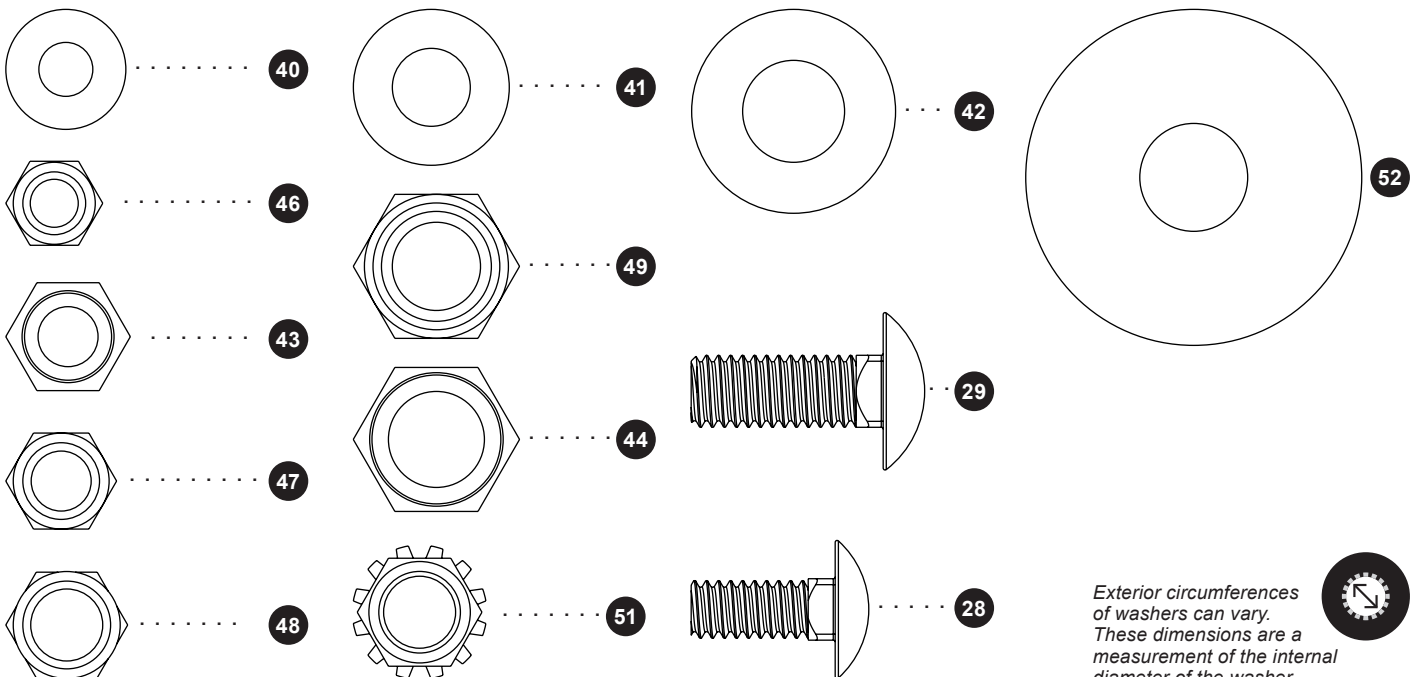
DO NOT RETURN PRODUCT IF YOU ARE MISSING PARTS.

Please Call: 1 (877) 728-8224

EXPLODED VIEW - HARDWARE PACK

REF	PART NO.	DESCRIPTION	QTY	REF	PART NO.	DESCRIPTION	QTY
21	1000225	Handle Grip	1	38	2M1620P	Bolt, Hex Head 1/2" x 1-1/4"	2
22	1017741	Hinge Rod	1	39	2M1632P	Bolt, Hex Head 1/2" x 2"	1
23	1018092	Transport Rod	1	40	45M0909P	Washer, SAE Flat 1/4"	8
24	1018115-01	Pivot Tube	2	41	45M1313P	Washer, SAE Flat 3/8"	8
25	1020426	Spacer, 3/8" x 5/8"	2	42	45M1717P	Washer, SAE Flat 1/2"	1
26	1020427	Spacer, 3/8" x 3/8"	2	43	B-1675P	Nut, Hex Lock 3/8"-16	1
27	1020428	U-Bolt	1	44	B-1677P	Nut, Hex Lock 1/2"-13	1
28	11M1012P	Bolt, Carriage 1/4" x 1"	5	45	B-3861	Pin, Hitch 1/2" x 2-1/2"	1
29	11M1216P	Bolt, Carriage 3/8" x 1"	4	46	B-4785	Nut, Nylon Lock 1/4"-20	17
30	2M0816P	Bolt, Hex Head 1/4" x 1"	16	47	B-4786	Nut, Nylon Lock 5/16"-18	7
31	2M0828P	Bolt, Hex Head 1/4" x 1-3/4"	1	48	B-4820	Nut, Nylon Lock 3/8"-16	19
32	2M1024P	Bolt, Hex Head 5/16" x 1-1/2"	2	49	B-5096Y	Nut, Nylon Lock 1/2"-13	2
33	2M1212P	Bolt, Hex Head 3/8" x 3/4"	4	50	B-6298	Bolt, Hex Head 3/8" x 3-3/4"	1
34	2M1220P	Bolt, Hex Head 3/8" x 1-1/4"	1	51	B-6299	Nut, Keps Hex 3/8"-16	2
35	2M1224P	Bolt, Hex Head 3/8" x 1-1/2"	2	52	B-723P-01	Washer, Flat 9/16"	1
36	2M1228P	Bolt, Hex Head 3/8" x 1-3/4"	2	53	B-7291	Bolt, Hex Head 3/8" x 2-1/2"	1
37	2M1232P	Bolt, Hex Head 3/8" x 2"	3	54	D-146P	Hairpin Cotter, 1/8", #211 *	5

* Not shown



HARDWARE IDENTIFIER

Illustrations on this page are to scale for faster identification of hardware during assembly.

DO NOT RETURN PRODUCT IF YOU ARE MISSING PARTS.

Please Call: 1 (877) 728-8224

