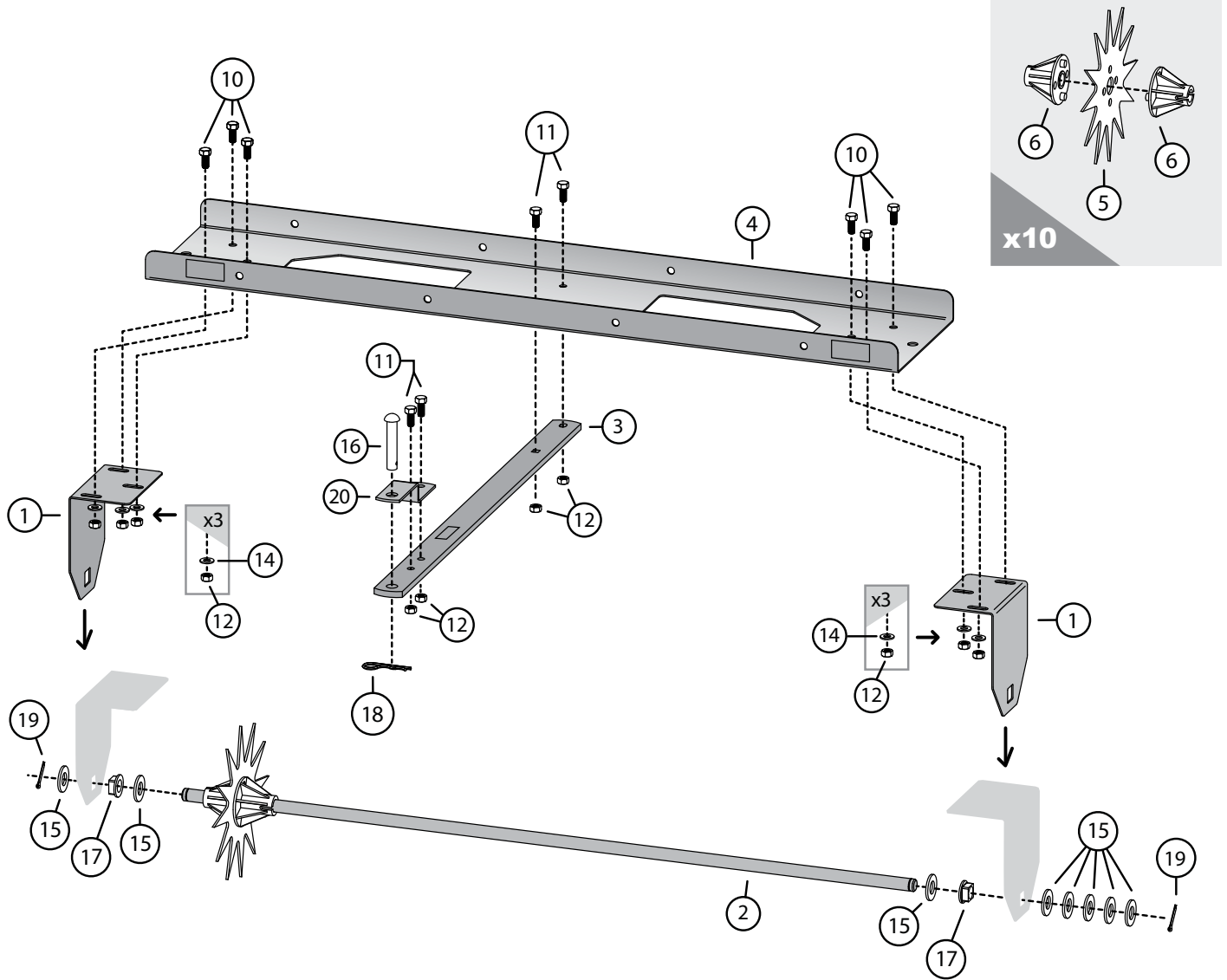


COMPONENT VIEW AND REFERENCE LIST



Ref #	Part #	Description	Qty
1	1018977-06	End Panel	2
2	1018988	Tine Shaft	1
3	1019409	Drawbar with Label	1
4	1019406	Tray with Labels	1
5	1018833	Tine	10
6	1019589	Bearing	20

Hardware Bag: 1019106

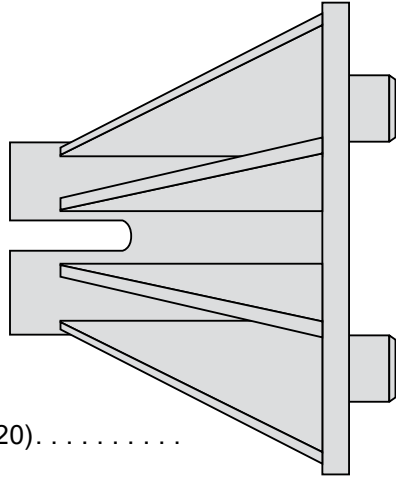
10	2M1012P	Bolt; Hex Head, 5/16 x 3/4	6
11	2M1016P	Bolt; Hex Head, 5/16 x 1	4
12	B-4786	Nut; Nylock, 5/16	10
14	45M1111P	Washer; Flat, 5/16"	6
15	45M2121P	Washer; Flat, 5/8"	8
16	B-3861	Hitch Pin, 1/2" x 2-1/2"	1
17	1019206	Square Bearing	2
18	1019151	Hairpin Cotter, 1/8"	1
19	1008098	Cotter Pin	2
20	1019260-06	Clevis	1

HARDWARE IDENTIFIER

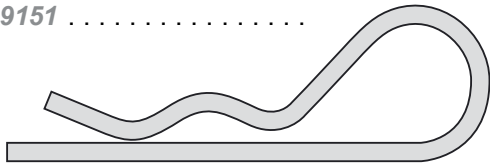
Illustrations on this page are to scale for faster identification of hardware during assembly.

DO NOT RETURN PRODUCT IF YOU ARE MISSING PARTS.

Please Call: 1 (877) 728-8224



⑥ Bearing (x20).....
1019589

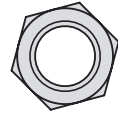


⑱ Hairpin Cotter, 1/8" (x1)
1019151



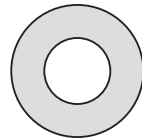
⑲ Cotter Pin (x2)
1008098

⑫ Nut: Nylock
5/16" (x10)



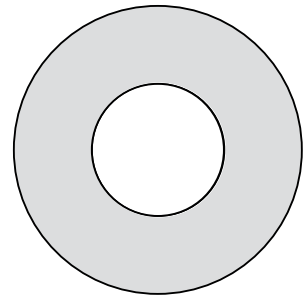
B-4786

⑭ Washer: Flat
5/16" (x6)



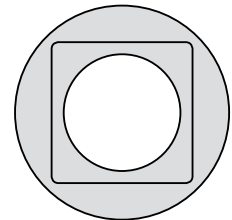
45M1111P

⑮ Washer: Flat
5/8" (x8)



45M2121P

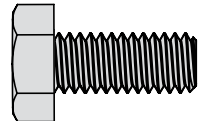
⑰ Square
Bearing (x2)



1019206

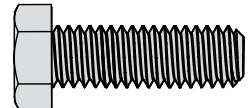
⑩ Bolt: Hex Head, 5/16 x 3/4" (x6)

2M1012P



⑪ Bolt: Hex Head, 5/16 x 1" (x4)

2M1016P



⑯ Hitch Pin: 1/2" x 2 1/2" (x1)

B-3861

