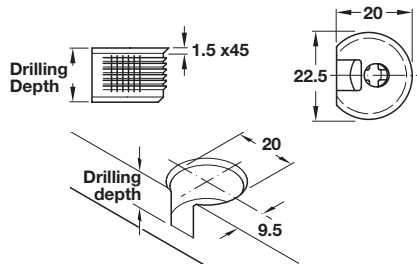
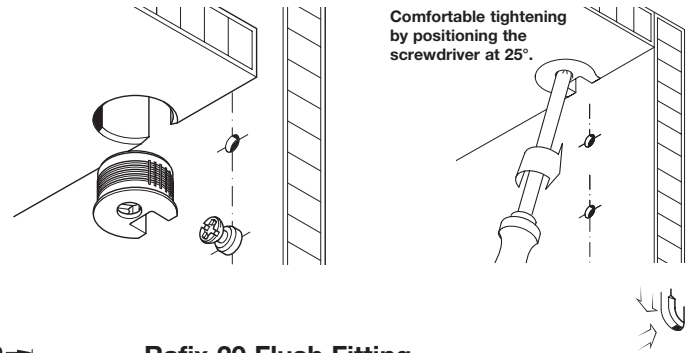


**Häfele Rafix System**

- No projecting parts due to the countersunk rim on the housing
- Housing is mounted flush to shelf
- Panels can be stacked without spacers

**ixconnect**

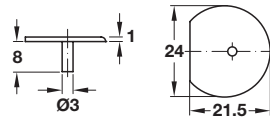


**Rafix 20 Flush Fitting**

- Without ridge
  - With tightening element
  - For wood thicknesses: 19 mm
- Mounting center: 9.5 mm  
 Drilling depth: 14.2+0.2 mm

Material: Plastic; Tightening element: Zinc alloy

Color	Item No.
white	263.50.705
beige	263.50.405
brown	263.50.105
black	263.50.305
gray	263.52.205

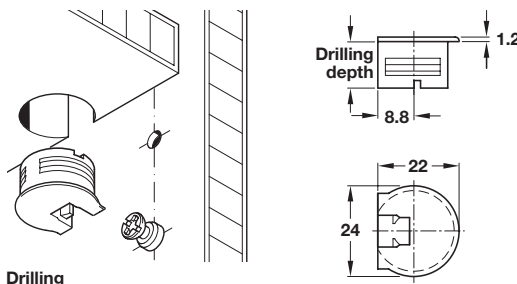


**Trim Cap**

- For Rafix 20 flush fitting

Material: Plastic

Color	Item No.
white	263.59.730
beige	263.59.430
brown	263.59.130

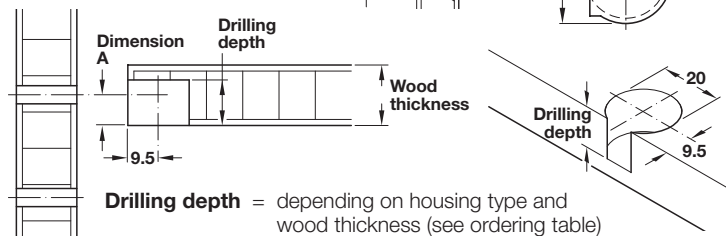


**Rafix 20 TAB Housing**

- Rafix 20 TAB is a continuation of the Rafix design line for shelf connections
- The housing is pressed into the shelf and pushed onto connecting bolt
- A cost effective method for creating a positive engagement shelf support
- Uses standard Rafix machining while allowing for a tool-less connection
- Without tightening element

Material: Plastic

Color	For 19 mm	For 16 mm
white	263.09.732	263.09.731
beige	263.09.432	263.09.437
brown	263.09.132	263.09.133
black	263.09.332	263.09.339



**Dimension A** = 1/2 of the wood thickness (see ordering table)



For wood thickness from:	Dim. A mounting center	Drilling depth
16	8.0	12.7+0.2 mm
19	9.5	14.2+0.2 mm

Dimensional data not binding. We reserve the right to alter specifications without notice.