

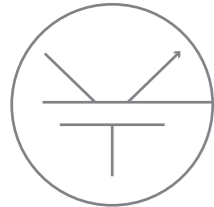
John G Peck Ltd

Specialist Distributor of Power Electronic Components



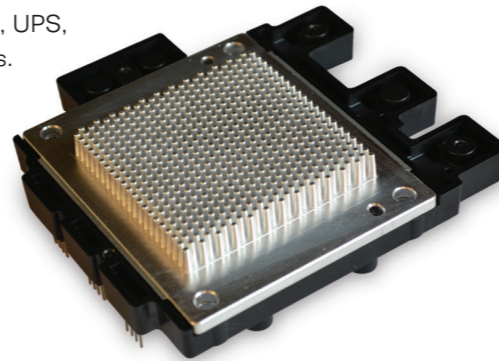
Specialists in power semiconductor components and accessories, we offer solutions to companies working in the field of power electronics

As distributor and agent for some of the world's leading manufacturers in this field, we supply components for such diverse applications as motor control, traction, UPS, power generation, induction heating, welding, wind-power and electric vehicles.



- Automotive & Electric Vehicles
- Aviation
- Battery Systems
- Combined Heat & Power
- Induction Heating
- Medical Equipment
- Motor Drives

- Power Supplies & UPS
- Pulsed Power
- Renewable Energy
- Rotating Machines
- Servo Drives
- Traction & Rail
- Welding



Our high standards

The John G Peck Ltd Quality Management System is approved to ISO 9001:2015. Our environmental policies target energy reduction, waste management and of recycling packaging materials. This benefits both the environment and customers by keeping operating costs low.

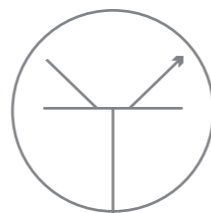
Best possible service

A comprehensive range of stock is held in the UK with most orders dispatched the same day. Services offered to our customers include:

- Buffer stock for OEM's
- Fast response against call off orders
- Just-In-Time deliveries
- Same day deliveries
- Serial number tracking
- Bar-coded consignments
- Vast range of products stocked for spares & servicing



We have a strong emphasis on engineering; more than half our staff are qualified engineers.



Our technical support

Given the specialist nature of our product range, it is essential we offer our customers a high level of technical support from design to production;

- We have one of the strongest and experienced power electronics technical teams in UK distribution
- Local technical support is backed by the application engineering teams of our suppliers
- We are active in promoting face to face meetings or technology updates with our supplier base
- Simulation tools and services are offered to support selection of the right product
- Fast response times are our priority

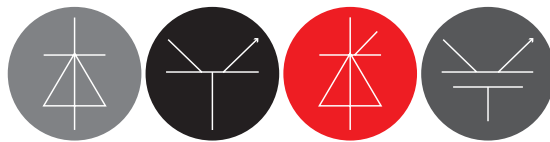


Our partners and products



| POWER SEMICONDUCTORS | | | | | | | | | | |
|--|---|---|---|--|----|--|---|---|---|---|
| IGBT | ✓ | | | | | | | | | |
| High Voltage IGBT | ✓ | | | | | | | | | |
| Intelligent Power Modules (IPM) | ✓ | | | | | | | | | |
| Automotive IGBT | ✓ | | | | | | | | | |
| MOSFETS | ✓ | | | | | | | | | |
| Silicon Carbide | ✓ | ✓ | | | | | | | | |
| Custom Modules (SiC, IGBT, etc) | | ✓ | | | | | | | | |
| Diodes | | ✓ | | | | | | | | |
| Thyristors | | ✓ | | | | | | | | |
| Rectifiers | | ✓ | | | | | | | | |
| DRIVERS & TRIGGER CIRCUITS | | | | | | | | | | |
| IGBT Gate Drivers | | | | | | | ✓ | | | |
| HV Gate Drivers | | | | | ✓ | | | | | |
| DC-DC Converters | | | | | | | ✓ | | | |
| BUSBARS | | | | | | | | | | |
| PCB Busbars | | | ✓ | | | | | | | |
| Laminated Inverter Busbars | | | ✓ | | | | | | | |
| Liquid Cooled Busbars | | | ✓ | | | | | | | |
| Automotive & Battery Busbars | | | ✓ | | | | | | | |
| Custom Solutions | | | ✓ | | | | | | | |
| COOLING | | | | | | | | | | |
| Extruded Heatsinks | | | ✓ | | | | | | | |
| Pressed Fin Heatsinks | | | ✓ | | | | | | | |
| Liquid Cooled Heatsinks | | | ✓ | | | | | | | |
| Heat Pipes | | | ✓ | | | | | | | |
| Axial Fans & Blowers | | | | | | | | | | ✓ |
| THERMAL INTERFACE MATERIALS | | | | | | | | | | |
| Thermal Pads & Compounds | | | | | | | | | ✓ | |
| POWER ASSEMBLIES <i>Available on request</i> | | | | | | | | | | |
| MEASUREMENT & PROTECTION | | | | | | | | | | |
| Current Sensors | | | | | | | ✓ | | | |
| Voltage Sensors | | | | | | | ✓ | | | |
| Semiconductor Fuses | | | | | ✓ | | | | | |
| EV & Battery Fuses | | | | | ✓ | | | | | |
| Over Current Protection Devices | | | | | ✓ | | | | | |
| PASSIVES | | | | | | | | | | |
| Electrolytic Capacitors | | | | | | | | ✓ | | |
| Film Capacitors | | | | | ✓* | | | | ✓ | |
| PFC Capacitors | | | | | | | | | ✓ | |
| Power Capacitors | | | | | ✓* | | | | ✓ | |
| Power Resistors | | | | | | | | | ✓ | |
| Chokes | | | | | | | | | | ✓ |
| Switching & Snubber Capacitors | | | | | | | | ✓ | | |

*Fischer and Tausche (F&T) are now part of the MERSEN Group.



John G Peck Ltd

Unit B1 | Wymeswold Industrial Park | Wymeswold Lane | Burton on the Wolds | Loughborough | Leics | LE12 5TY | UK

T: +44 (0)1509 881010 | F: +44 (0)1509 881688 | enquiries@jgpl.com

www.jgpl.com