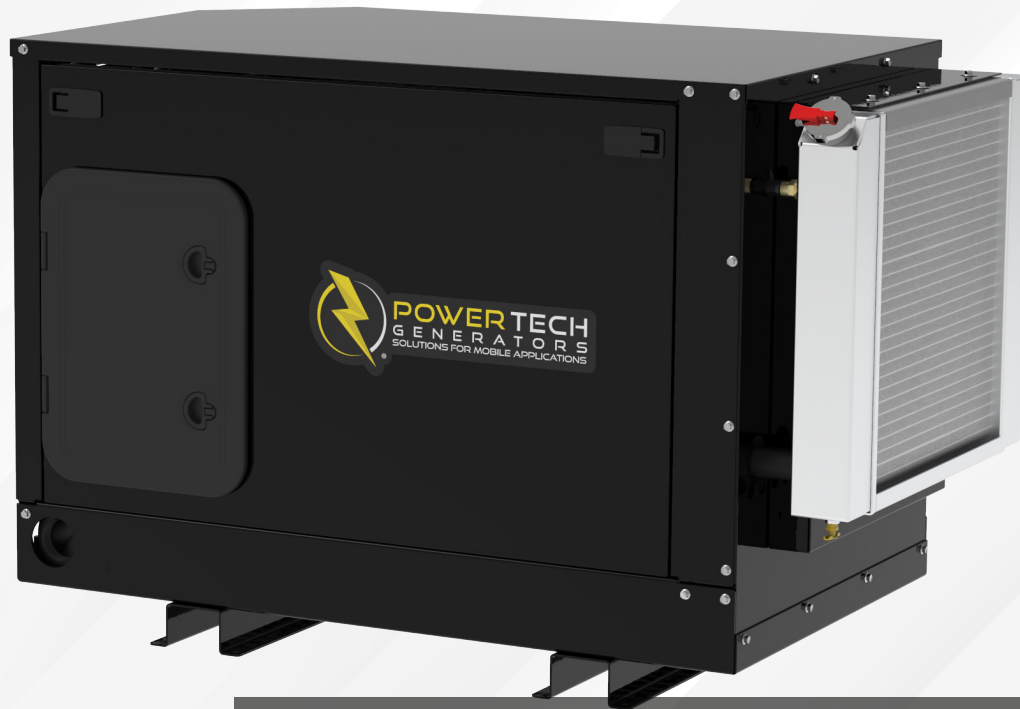




POWERTECH
GENERATORS



PTI-25SI DIESEL GENERATOR

FEATURES

- 25,000 WATT ENCLOSED GENERATOR
- TIER 4 FINAL CLEAN DIESEL
- WEATHER RESISTANT ENCLOSURE
- RUGGED INDUSTRIAL GRADE
- SINGLE SIDE SERVICE
- DUAL STAGE FUEL FILTRATION

DIMENSIONS: 50.875" L x 27" W x 30.56" H

- Prime Power Output: 25,000W
- Liquid-Cooled, 4 Cylinder, Diesel
- Engine Mounted Diesel Oxidation Catalyst
- Available 50Hz and 60Hz
- Available in 3 Phase
- Brush-less Generator with Voltage Regulator
- Safety Shutdowns for High Temp and Low Oil Pressure
- Output Voltage: 120VAC/240VAC
- Amperage: 200A @120VAC (100A @ 240VAC)
- Fuel Consumption: 1.96 GPH at Full Load
- Weight: 1126LBS
- Sound: 72DB @ 7 Meters

Disclaimer: Weights and dimensions shown may vary and are for guidance only. Please confirm with your PowerTech Sales Representative before ordering.

